

SODO OFFICE OPPORTUNITY

S ORANGE AVE & JENNIE JEWEL DR ORLANDO, FL 32806

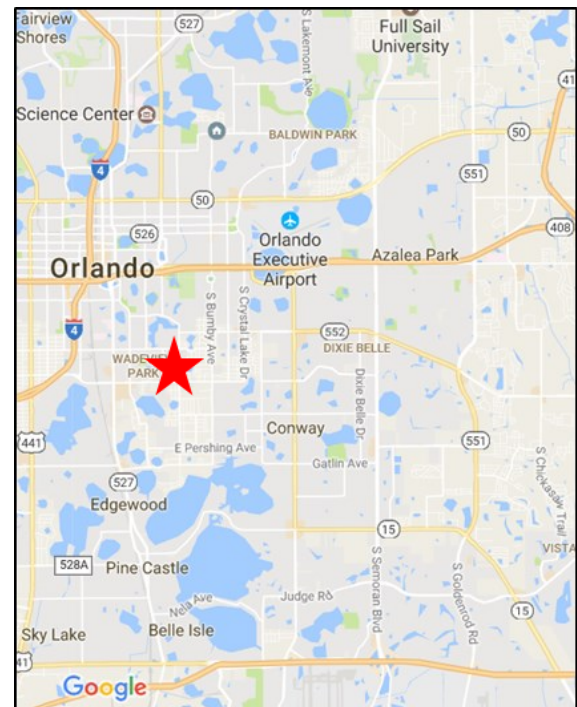


PROPERTY HIGHLIGHTS

OFFICE DEVELOPMENT IN SODO AREA

- Next to 6-Acre Mixed Use Development
- Lease from 1,500-12,000 Square Feet
- 2 Miles South of Downtown Orlando
- 100 FEET OF FRONTAGE ON ORANGE AVE
- FULL ACCESS FROM ORANGE AVE
- CROSS ACCESS WITH LIGHTED INTERSECTION LOCATED ON DRENNEN RD
- BUILD TO SUIT OR GROUND LEASE ALSO AVAILABLE
- 36,439 AADT ORANGE AVE

Demographics	1-Mile	3-Mile	5-Mile
Population	8,808	120,103	297,605
Avg. HH Income	\$75,058	\$61,547	\$59,540



Drew Shofner

321-295-3998

drew@blurockcommercial.com

3408 South Orange Ave.

Suite B

Orlando, FL 32806

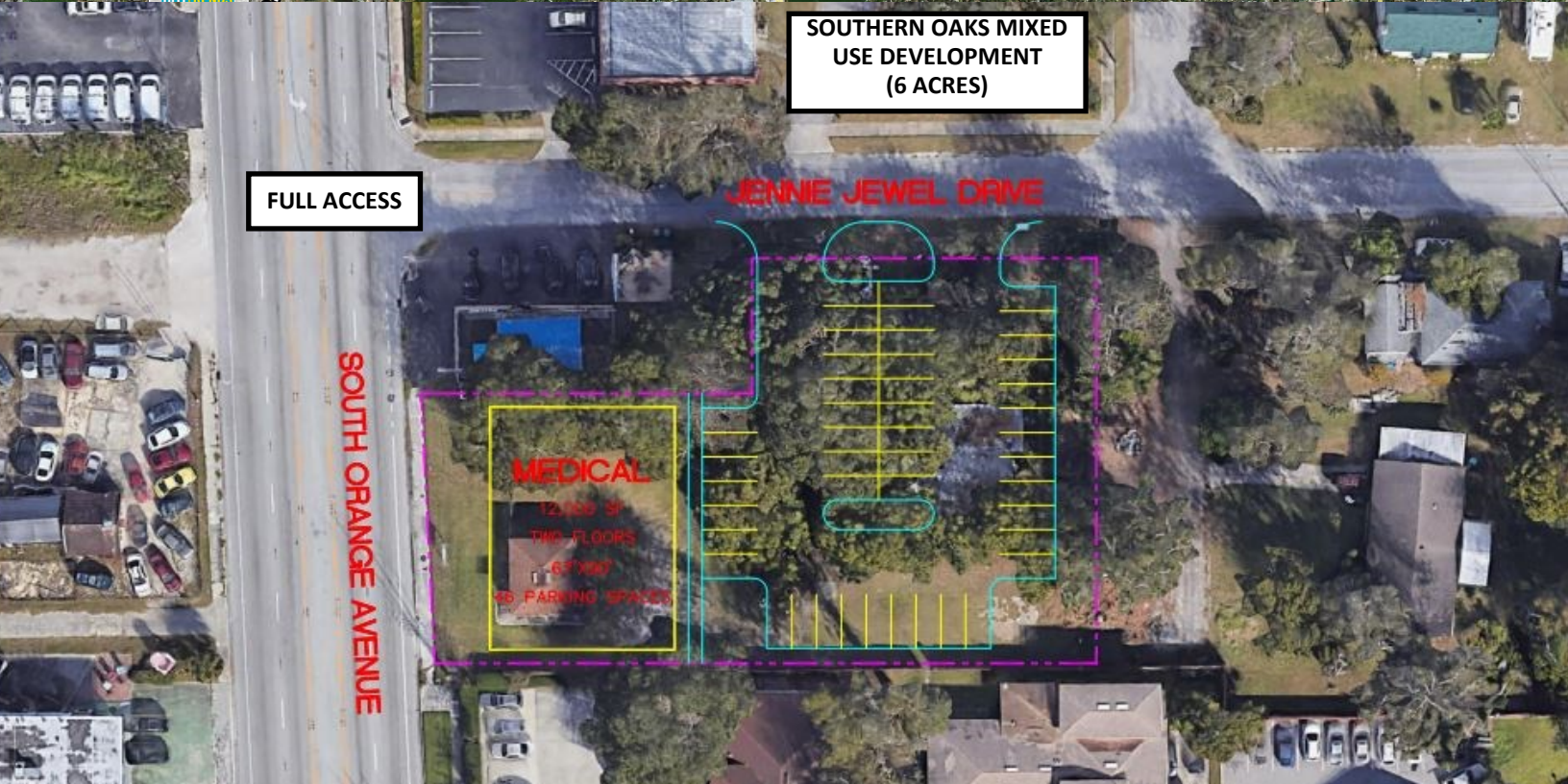
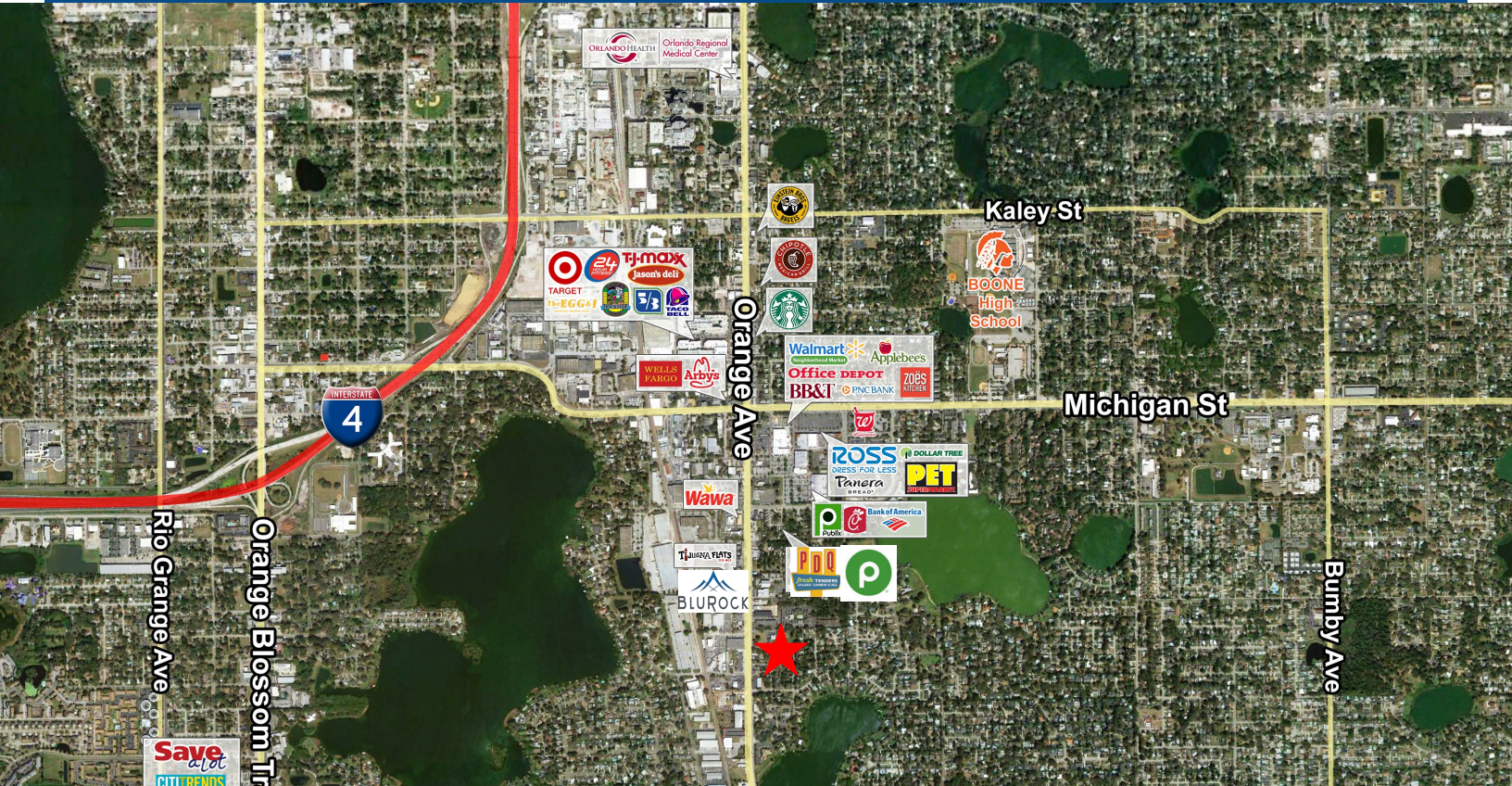
www.blurockcommercial.com



ORLANDO, FL

SOUTHERN OAKS - RETAIL/OFFICE PHASE D

S ORANGE AVE & JENNIE JEWEL DR ORLANDO, FL 32806



Drew Shofner

321-295-3998

drew@blurockcommercial.com

3408 South Orange Ave.

Suite B

Orlando, FL 32806

www.blurockcommercial.com

