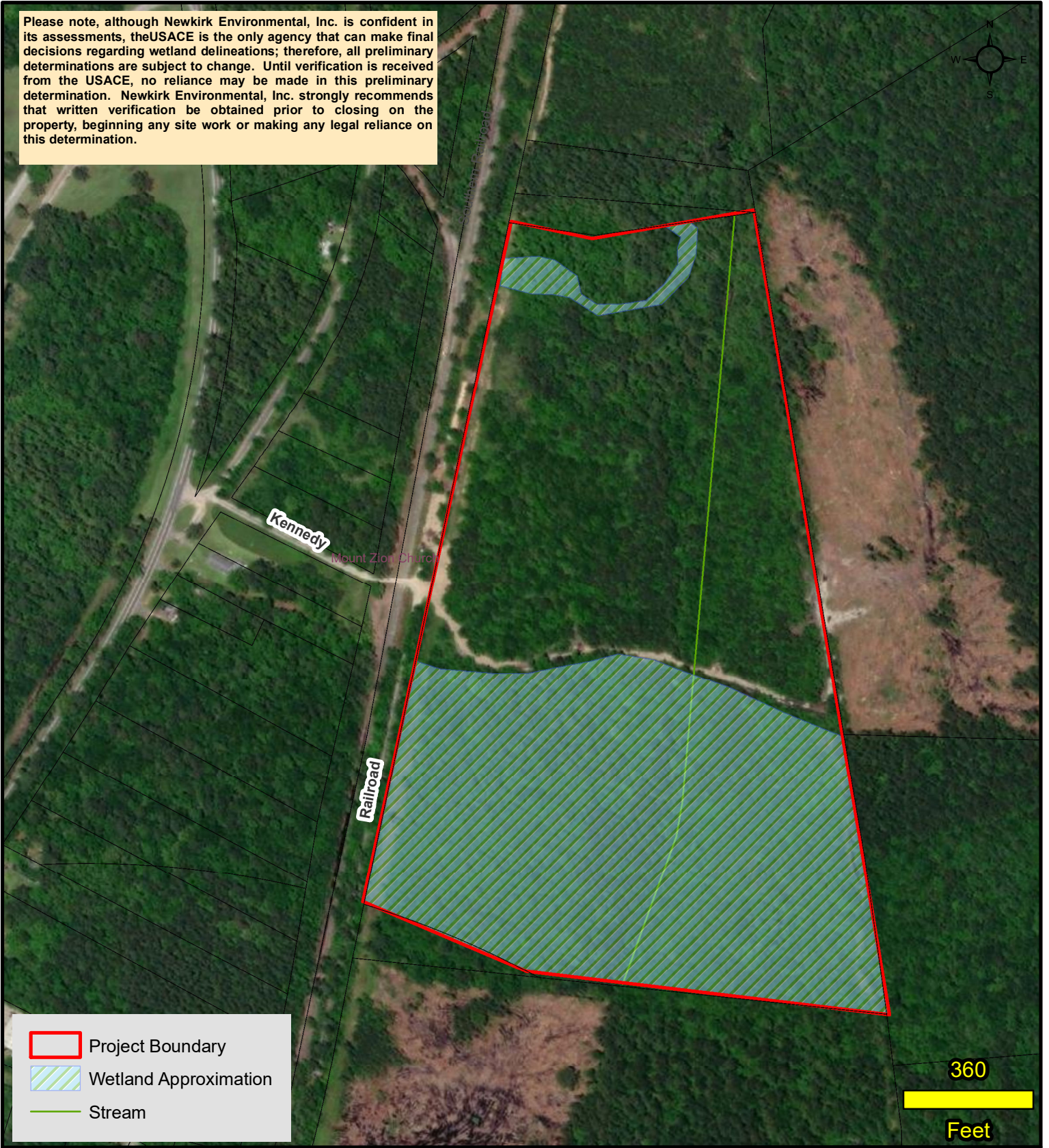


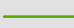


Please note, although Newkirk Environmental, Inc. is confident in its assessments, the USACE is the only agency that can make final decisions regarding wetland delineations; therefore, all preliminary determinations are subject to change. Until verification is received from the USACE, no reliance may be made in this preliminary determination. Newkirk Environmental, Inc. strongly recommends that written verification be obtained prior to closing on the property, beginning any site work or making any legal reliance on this determination.



 Project Boundary
 Wetland Approximation
 Stream

360

Feet

Wetland Approximation Map
Project #: 01-0000a Date: May 2022
Created by: LAB

Jeffers Tract
Dorchester County, South Carolina

