

# Medical Office for Sale or Lease

## *Searcy Plaza*

### *1104 N. El Dorado Place, Tucson, AZ*



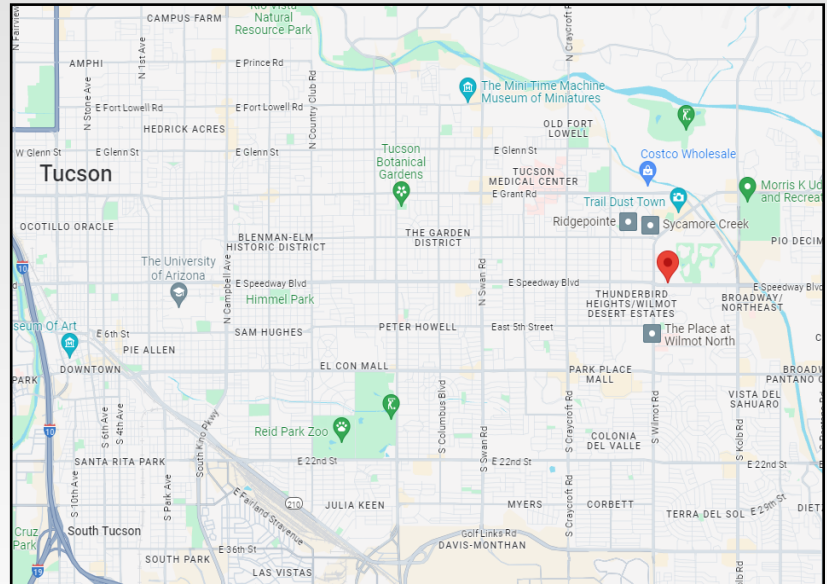
#### Property Information

- **Availability:** Bldg. #3 - 1,456 SF
- **Sale Price:** \$385,000
- **Lease Price:** \$25.00/SF
- **Lease Type:** Triple Net
- **Parcel#:** 133-14-8210
- **Zoning:** C-1, City of Tucson

#### Comments:

- Existing medical layout with high-end finishes.
- Modern masonry construction medical office with high visibility directly off Speedway Blvd.
- Common area courtyard secured by two tall wrought iron gates provides for a secluded alcove with access to front and rear parking.

#### Location Map



*Exclusively Represented by:*

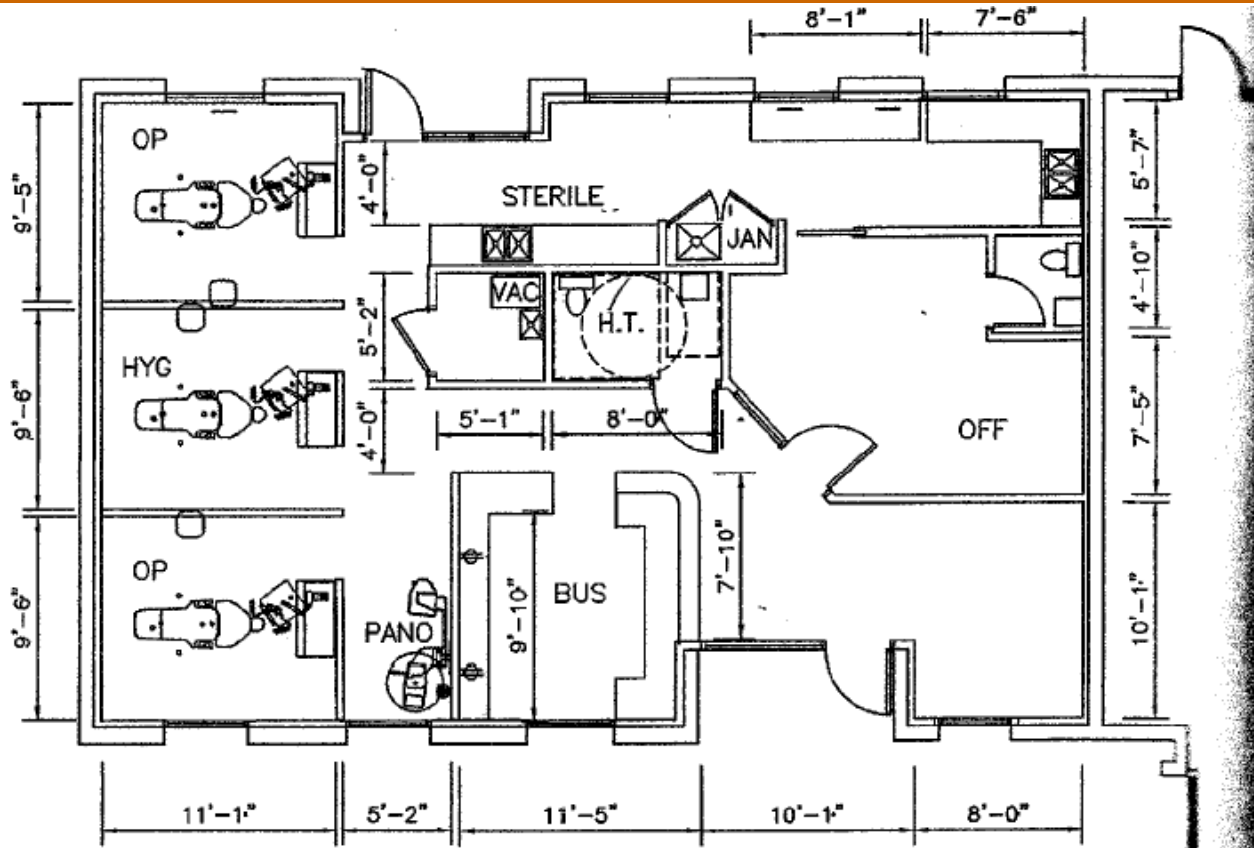
**Cameron Casey**  
(c) 520-235-3603



**Oxford** 6262 N. Swan Road, Suite 175  
Tucson, AZ 85718  
Phone (520) 232-0200  
Fax (520) 232-0300  
www.oxfordrealtyadvisors.com

REALTY ADVISORS

# Floor Plan & Interior Photos



## Demographics

	1 Mile	3 Miles	5 Miles
Population:	13,209	114,123	258,541
Average HH Income:	\$68,882	\$79,556	\$88,170

## Traffic Counts

Speedway Blvd.: 33,782 VPD

Exclusively Represented by:

**Cameron Casey**

(c) 520-235-3603

**Oxford**  
REALTY ADVISORS

6262 N. Swan Road, Suite 175  
Tucson, AZ 85718  
Phone (520) 232-0200  
Fax (520) 232-0300

[www.oxfordrealtyadvisors.com](http://www.oxfordrealtyadvisors.com)