

# 18415 Stuebner Airline Rd



Presented by  
The Nina Marino Realty Team

18415 Stuebner Airline Rd, Spring, TX 77379



**Price: \$8,500,000**

Great Commercial Land located on Stuebner Airline with 1409 feet of frontage Road. 23.133 Acres! Curb cut in place. Curb/Gutter/Sidewalk, Electricity, Gas, Irrigation, Sewer, Streets, Telephone, Water. Approval to be annexed into MUD granted. Proposed Use - Apartment Units - Senior, Commercial, Distribution, Industrial, Industrial Park, Mixed Use, Multifamily, Office Park, Retail! Houston George Bush Intercontinental Airport 30 minutes, 19.5 miles. Call The Nina Marino Realty Team for more information! 281-364-3773

# 18415 Stuebner Airline Rd

18415 Stuebner Airline Rd, Spring, TX 77379



Prime Investment Property Located In Spring, TX

Ideal Location for Retail on the Frontage with Townhomes or Small Apartment Complex behind!



**Nina Marino**

[sales@ninamarino.com](mailto:sales@ninamarino.com)  
(281) 364-3773

**The Nina Marino Realty Team**

2219 Sawdust Rd, Suite 1802  
The Woodlands, TX 77380



# 18415 Stuebner Airline Rd

18415 Stuebner Airline Rd, Spring, TX 77379

# 18415 Stuebner Airline Rd

18415 Stuebner Airline Rd, Spring, TX 77379

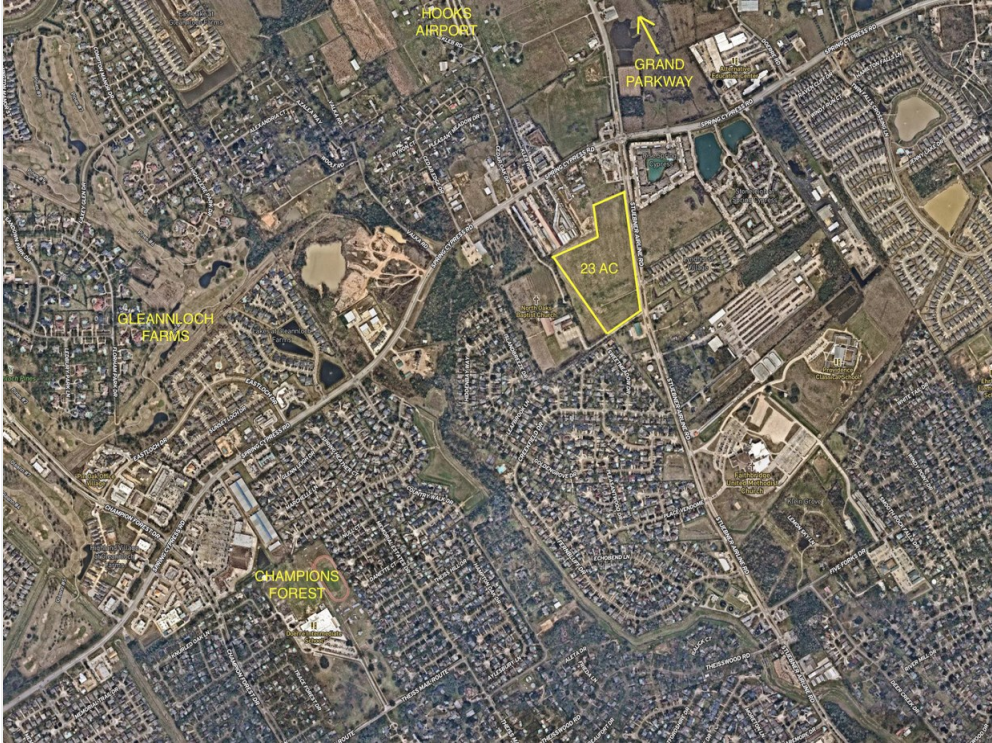
## Property Photos



# 18415 Stuebner Airline Rd

18415 Stuebner Airline Rd, Spring, TX 77379

## Property Photos



# 18415 Stuebner Airline Rd

18415 Stuebner Airline Rd, Spring, TX 77379

## Location

