



122 Lindbergh Avenue | Livermore

# For Sale or Lease | ±56,027 SF Light Industrial Building

## Highlights



±56,027 SF  
Freestanding Light  
Industrial/R&D  
Building



±22,000 SF  
Office/Assembly  
Area



Two Story Office  
with Elevator



100%  
HVAC



Parking  
±3.5/1,000



Contact Brokers  
for Pricing

### Contact Brokers

**Michael Donnelly, SIOR**  
Senior Vice President  
CA License No. 01402626  
michael.donnelly@colliers.com  
+1 925 227 6241

**Michael Carrigg, SIOR**  
Executive Managing Director  
CA License No. 01298928  
michael.carrigg@colliers.com  
+1 925 227 6220

122 Lindbergh Avenue | Livermore

# Property Overview



- ±56,027 SF Freestanding Light Industrial / R&D Building
- ±22,000 SF Office/Assembly/Production Area
- Two Story Office with Elevator
- 100% HVAC
- Clear Height 15'-24' in Production Area
- One Dock & Three Grade Level Doors
- Power 2000 Amps @277/480 Volt Distributed Throughout (*Expandable to 4,000*) *Please Confirm*
- Parking: ±3.5/1,000
- Close proximity to I-580 and Retail Amenities
- Building Built in 2000

## Contact Brokers

### **Michael Donnelly, SIOR**

Senior Vice President  
CA License No. 01402626  
michael.donnelly@colliers.com  
+1 925 227 6241

### **Michael Carrigg, SIOR**

Executive Managing Director  
CA License No. 01298928  
michael.carrigg@colliers.com  
+1 925 227 6220

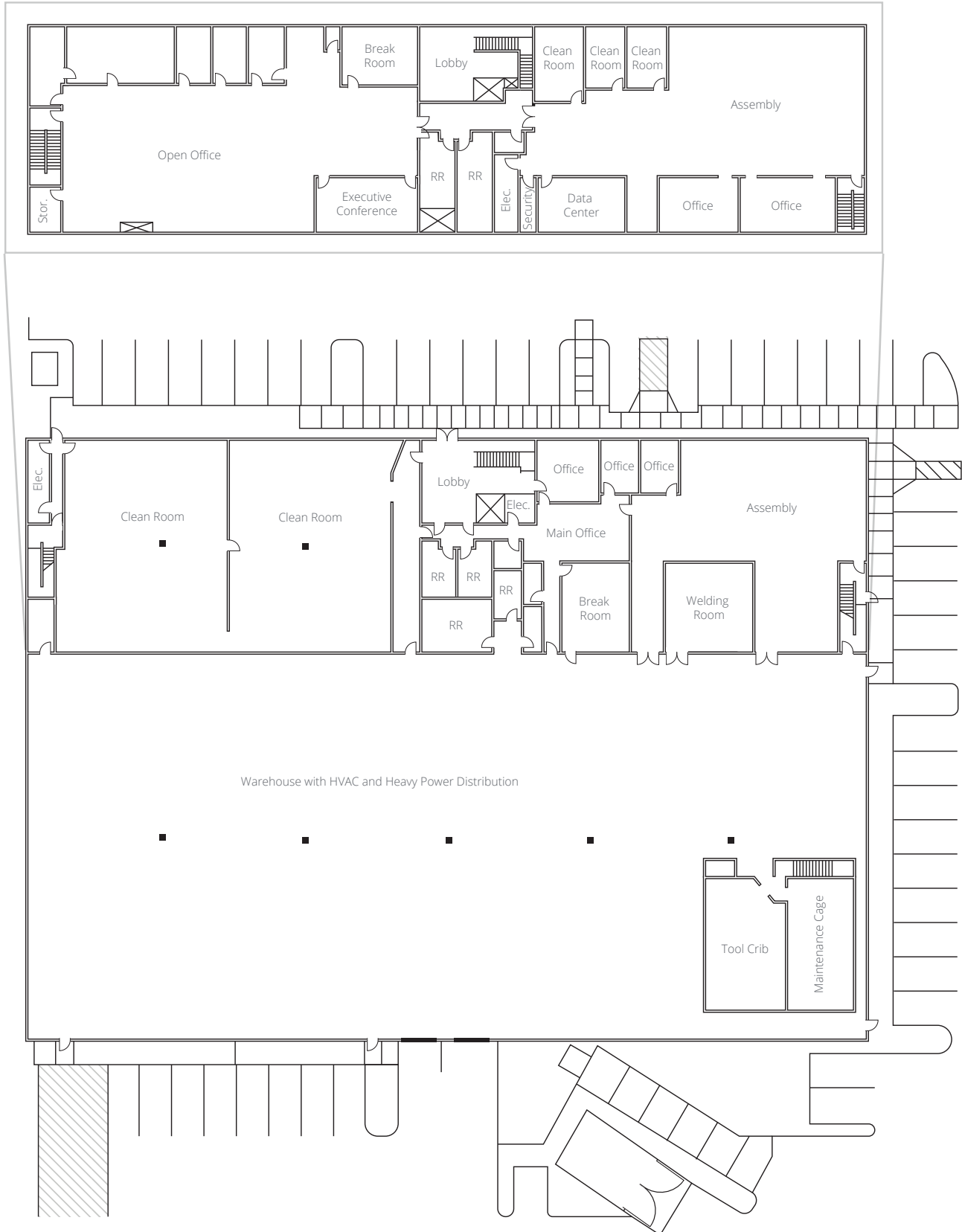
# Floor Plan

[Office Virtual Tour](#)

[Warehouse Virtual Tour](#)

[Second Story Virtual Tour](#)

## Second Story Office



122 Lindbergh Avenue | Livermore

# Photo Gallery

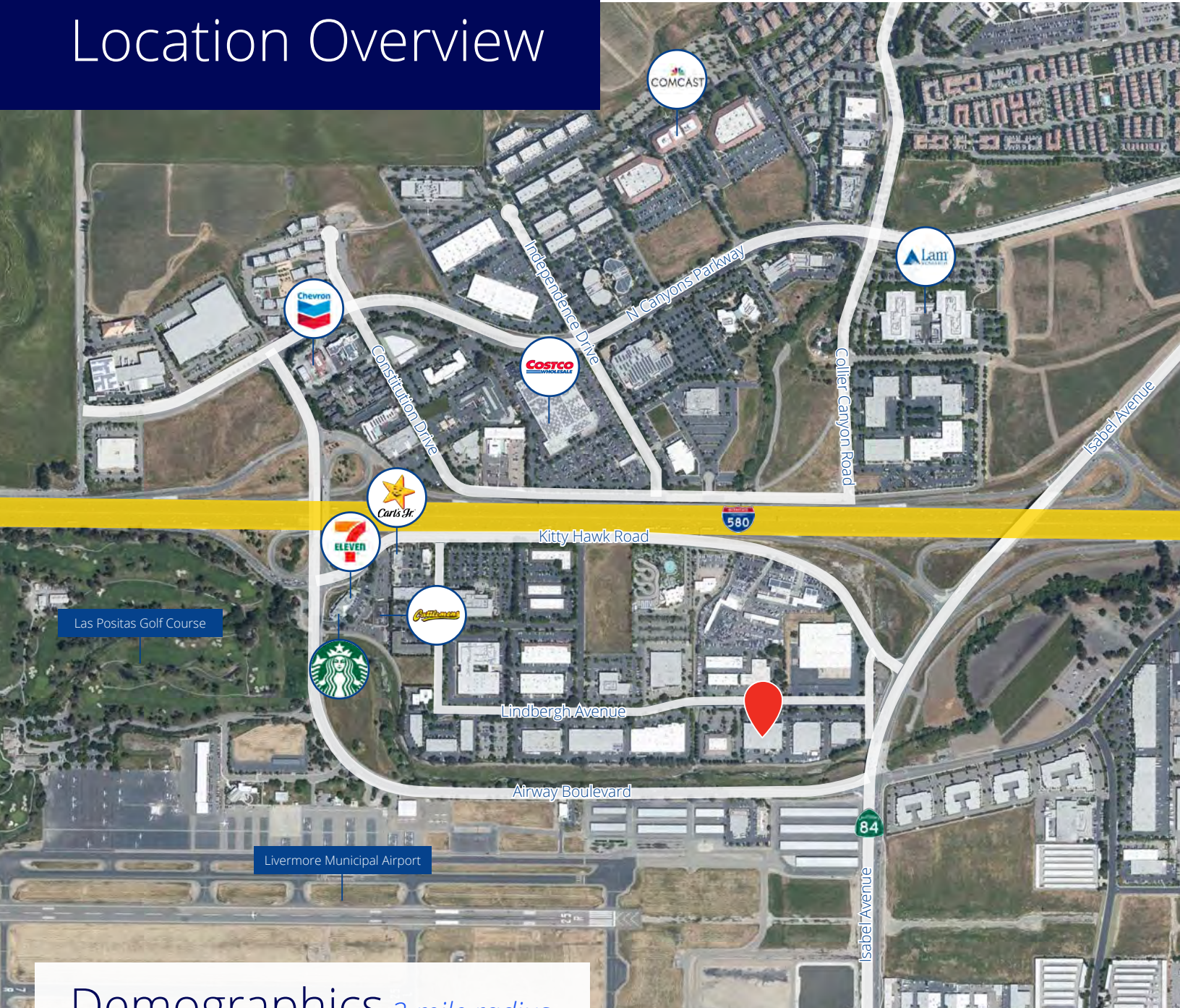


122 Lindbergh Avenue | Livermore

# Photo Gallery



# Location Overview



## Demographics *3 mile radius*



59,638

Total population



0.19%

2023-28 Pop  
Growth Rate



2,740

Businesses



27,466

Total  
employees



62.9%

White collar  
employees



16.7%

Blue collar  
employees