



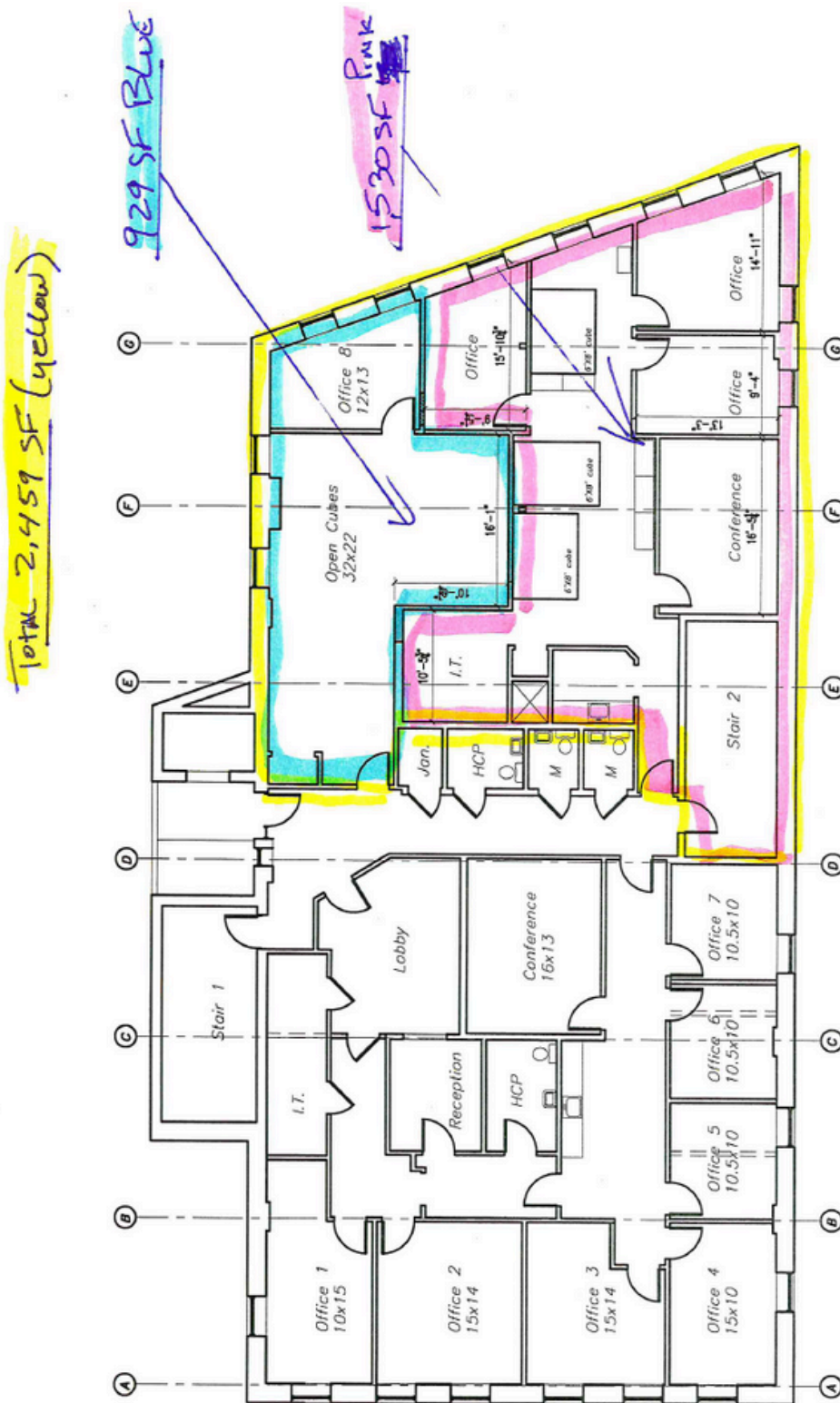
## Property Highlights

- Prominent location at the corner of Middle and Main Street
- Prime office spaces ranging from 929± SF - 5,320± SF
- Building-mounted signage available
- Average daily traffic count of 23,230± VPD
- Free dedicated parking on area surface lots

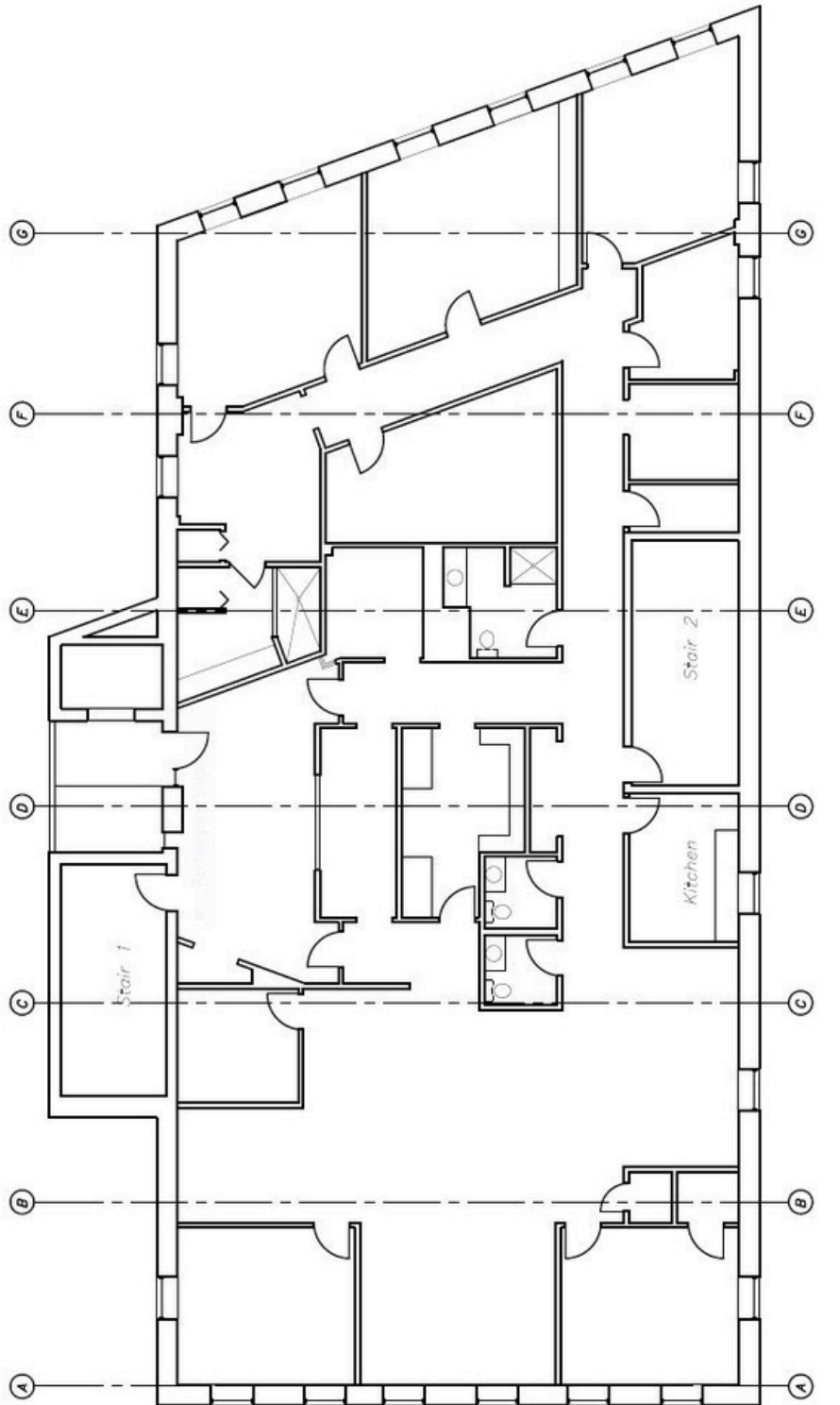


<b>Owner</b>	Lewiston Properties, LLC
<b>Assessors Reference</b>	Map 207, Lot 48
<b>Building Size</b>	30,150± SF
<b>Available Space</b>	3rd Floor: 2,861± SF 3rd Floor: 929± SF 4th Floor: 2,500± SF - 5,320± SF
<b>Signage</b>	Building Mounted & Pylon
<b>Elevator</b>	Yes
<b>Utilities</b>	Municipal water/sewer
<b>Sprinkler</b>	Yes
<b>Zoning</b>	CB- Community Business District
<b>Building Tenants</b>	Maine Immigrant and Refugee Services (MEIRS) Tradecraft Farms Black Bear Support Services Groups
<b>Lease Rate</b>	3rd Floor (2,861± SF): \$15.00/SF MG 3rd Floor (929± SF): \$19.00/SF Gross 4th Floor: \$15.00/SF MG





3rd Floor



4th Floor

PORTA  
& CO.

# Dedicated Parking Aerial

217 Main St, Lewiston, ME 04240



## CONTACT



**Tim Millett, CCIM**

Broker

C: 207-713-6995

O: 207-558-0893

[tmillett@portacompany.com](mailto:tmillett@portacompany.com)

This information has been obtained from sources believed reliable and is intended for informational use only. The information contained herein has not been verified for accuracy or completeness. It is recommended that prospective tenants and buyers conduct their own inspection of the property and verify all information. Any reliance on this information is solely at your own risk. Photos herein are the property of their respective owners. Use of these images without the express written consent of the owner is prohibited.

**PORTA & CO.**

COMMERCIAL REAL ESTATE

30 Milk Street, Second Floor  
Portland, ME 04101

207-747-1515

[www.portacompany.com](http://www.portacompany.com)