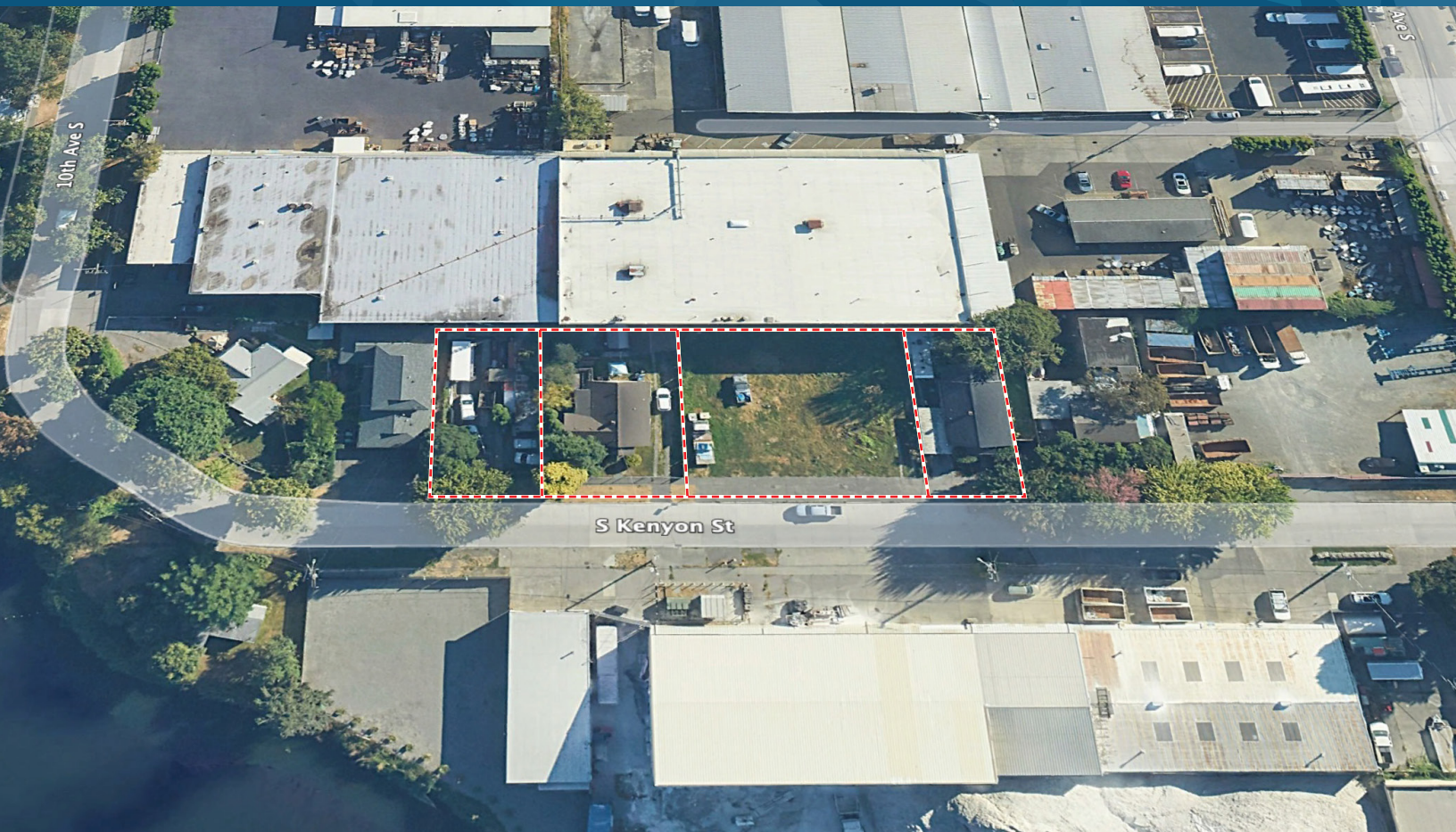


# KENYON STREET ASSEMBLAGE

823 - 837 S KENYON ST | SEATTLE, WA

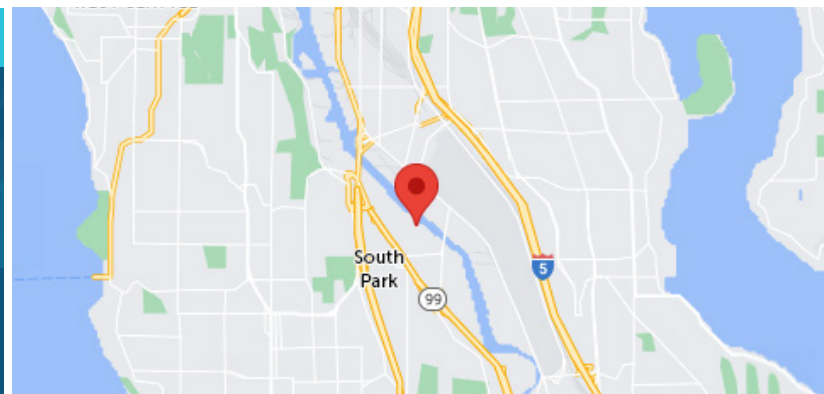


## SALE & LEASE INFORMATION

Land Size	Office Size	Divisible	Buildings	Parcels	Year Built	Lease Rate	Sale Price
25,000 SF	1,970 SF	15,000/10,000 SF	2	4	1919/1922	Call Broker	\$3,000,000

## PROPERTY HIGHLIGHTS

- Rare contractor yard opportunity in South Park
- Industrial zoning IG2-U65
- Small building with adjacent yard
- Preliminary design for 3-floor, 65,000 SF industrial/maker-space building



**KERMIT JORGENSEN**  
206.787.1475  
kjorgensen@neilwalter.com

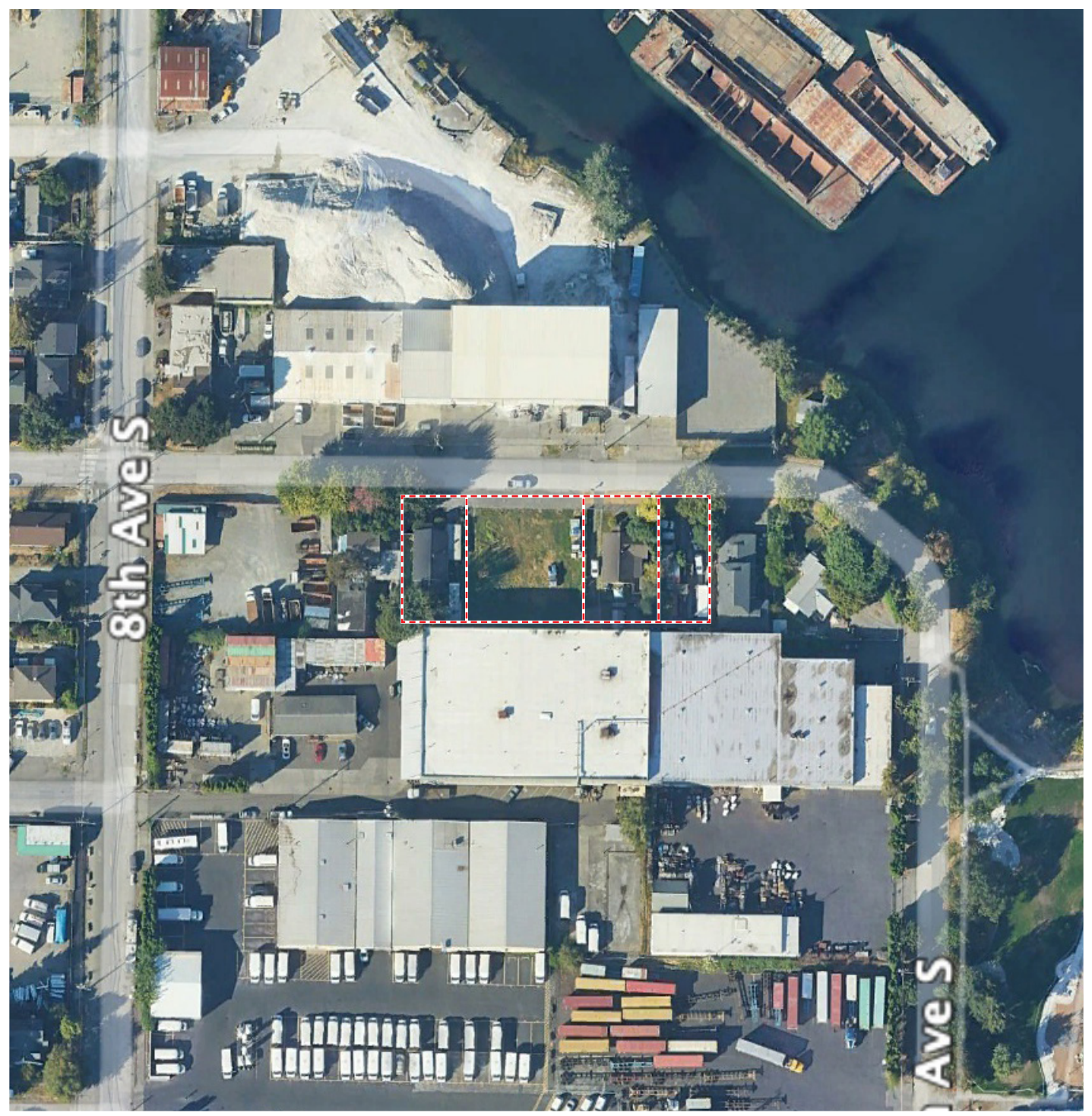
**JOHN BLEDSOE**  
206.787.1460  
jbledsoe@neilwalter.com

**SPENCER MEAD**  
206.787.1476  
smead@neilwalter.com

All information references in this document are approximate. The information contained herein is contained from sources deemed reliable. It is provided without representation, warranty, or guarantee, expressed or implied as to accuracy. Prospective buyer or tenant should conduct its own independent investigation relating to the property, government codes and regulations, allowed uses, and all other matters, regardless of whether they are referred to or contained in this document.

# KENYON STREET ASSEMBLAGE

823 - 837 S KENYON ST | SEATTLE, WA



**KERMIT JORGENSEN**  
206.787.1475  
kjorgensen@neilwalter.com

**JOHN BLEDSOE**  
206.787.1460  
jbledsoe@neilwalter.com

**SPENCER MEAD**  
206.787.1476  
smead@neilwalter.com

550 S Michigan St  
Seattle, WA 98108  
206.787.1800  
www.neilwalter.com

All information references in this document are approximate. The information contained herein is contained from sources deemed reliable. It is provided without representation, warranty, or guarantee, expressed or implied as to accuracy. Prospective buyer or tenant should conduct its own independent investigation relating to the property, government codes and regulations, allowed uses, and all other matters, regardless of whether they are referred to or contained in this document.