



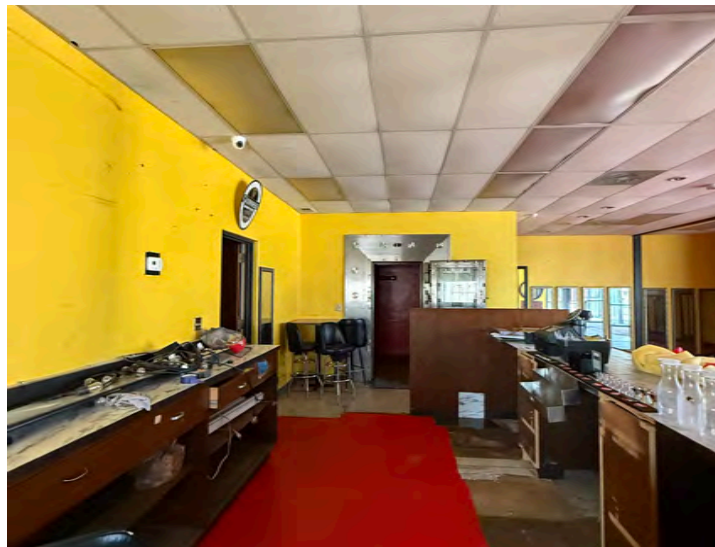
RETAIL SPACE | **FOR LEASE**

1129 WEST FRANKLIN BOULEVARD | GASTONIA

Excellent location in The FUSE (Franklin Urban Sports & Entertainment) District — a vibrant, multi-phase mixed-use development in Downtown Gastonia.

AUSTIN HOLLAND
c 704 340 5268
aholland@mecacommercial.com





PROPERTY INFORMATION

AVAILABLE SF*

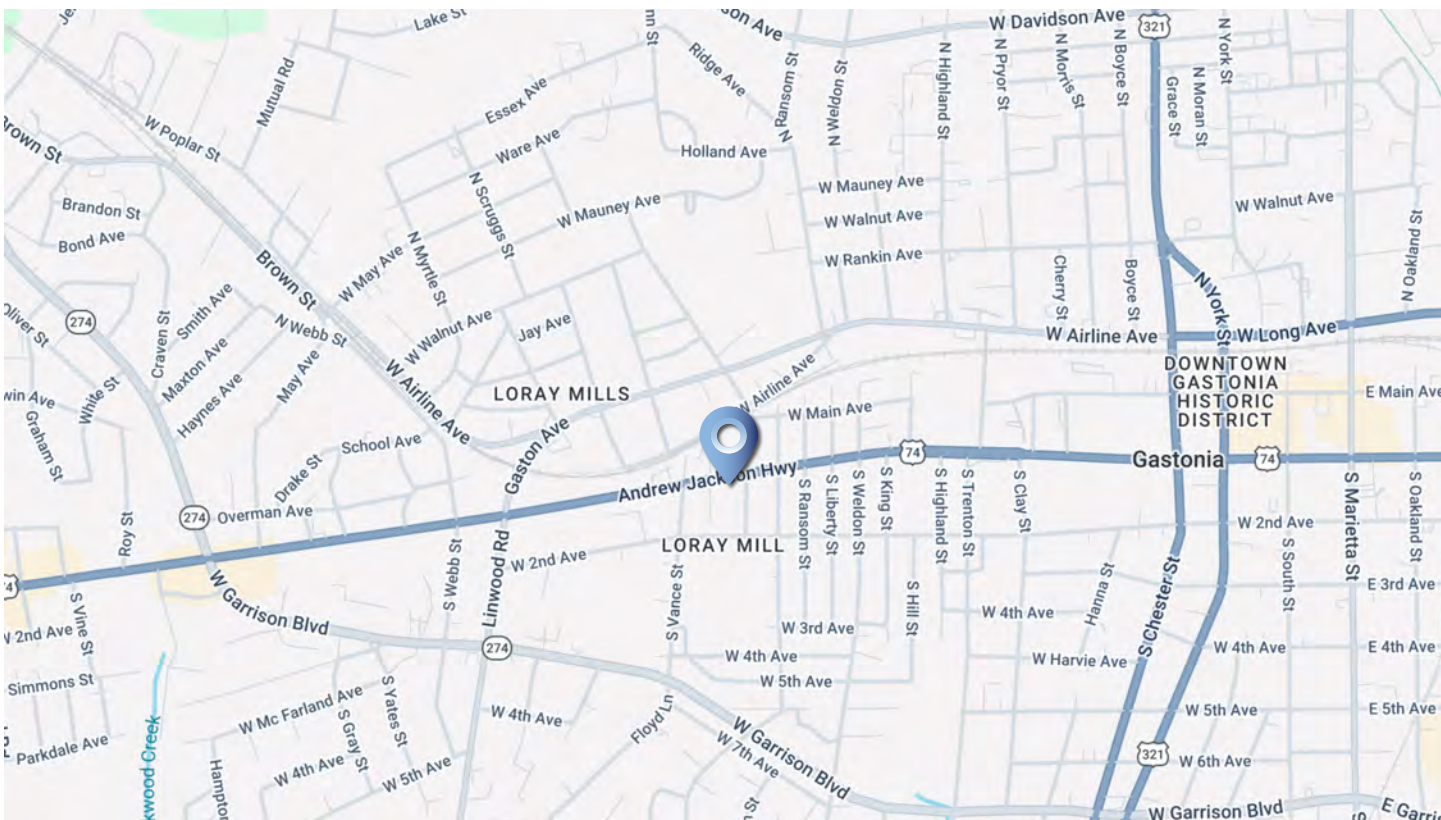
1,862 SF

FEATURES

- Two restrooms
- Located in the thriving FUSE district
- Fronts Franklin BLVD in front of the Loray Mill

LEASE RATE

\$20 per SF Annually



AUSTIN HOLLAND

c 704 340 5268

aholland@mecacommercial.com

MECA Commercial Real Estate

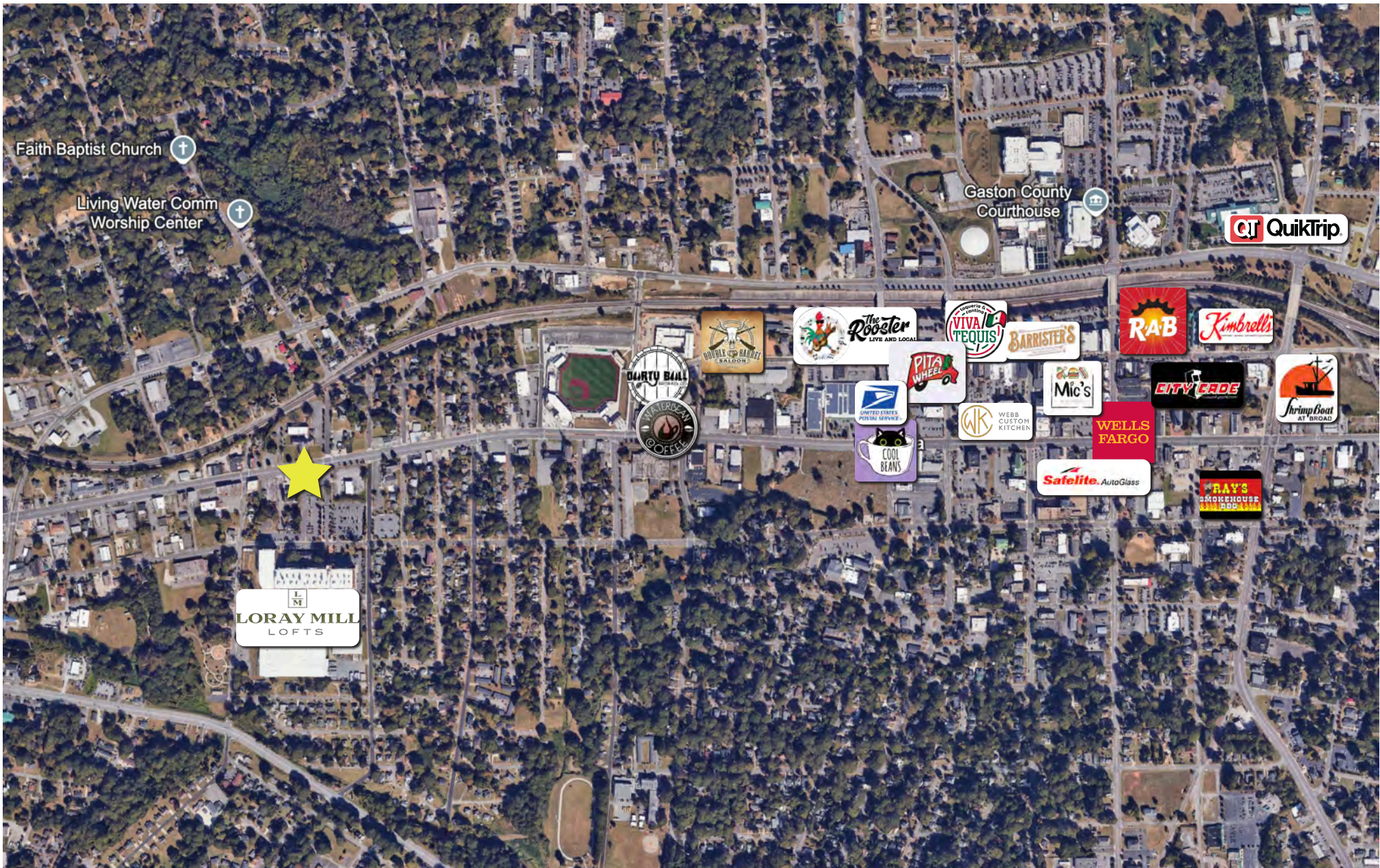
102 Main Street, Suite 110

McAdenville, NC 28101

704 971 2000



MECA
COMMERCIAL REAL ESTATE



**LORAY MILL
LOFTS**

mecacommercial.com

© 2026 Metro Realty, LLC. All rights reserved. Metro Realty, LLC fully supports the principles of the Fair Housing Act and the Equal Opportunity Act.

*The land acreage and/or building square footage was obtained from the County's Geographical Information System or other electronic resources. For exact square footage and/or acreage, we recommend that prior to purchase, a prospective Buyer/Tenant obtain a boundary survey or have the building measured professionally.



MECA
COMMERCIAL REAL ESTATE



3RD

LARGEST CITY IN
THE CHARLOTTE-
CONCORD-GASTONIA
NC-SC MSA

30+

INTERNATIONAL
COMPANIES

3X

ALL-AMERICAN CITY
& RECIPIENT OF THE
U.S. CONFERENCE
OF MAYORS TOP
LIVABILITY AWARD

22

MILES WEST
OF CHARLOTTE

25

MILE VIEWS
FROM CROWDERS
MOUNTAIN

GASTONIA, NC

Gastonia is recognized as one of the area's best places to live and work with an ideal combination of location, size, and quality of life. Those factors, combined with the City's strategic location, just minutes west of Charlotte and midway between Atlanta and North Carolina's Research Triangle, attracts business and industry looking for an ideal site to locate, re-locate, or expand.

With major highways, interstates, railroads, and airports all within a 15-minute drive, Gastonia understands the importance in ease of transportation for its local businesses and residents. They continue to stay proactive by pushing plans for light rail and commuter trains.

Additionally, the city is investing in the FUSE District, Franklin Urban Sports and Entertainment District, between Loray Mills and our revitalized Historic Downtown. The FUSE District is the heart of a growing commercial district that features the best of urban living: residential choices, sports and entertainment options, offices, restaurants, retail shops, services, green spaces and more. The FUSE sports and entertainment complex will be home to a variety of venues and events, accommodating an array of sports as well as concerts, fairs, and more.