



26' Clearspan Industrial Warehouse

15,000 sf



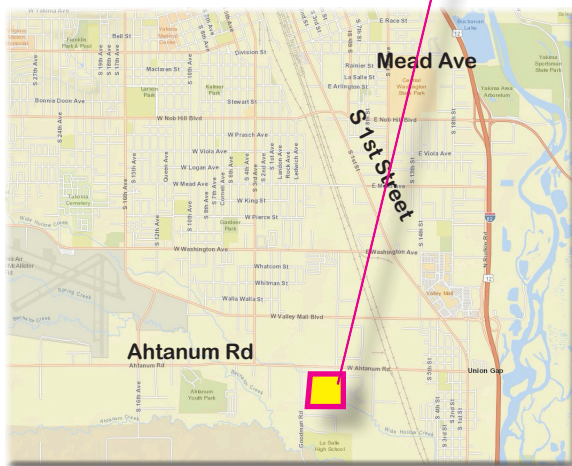
2751 Goodman Road - Building 200, Union Gap, WA

- **15,000 SF Office/Warehouse Building -**
- Fully Sprinklered, 26' clear height free-span building
- 600 amps of power, outside security lighting, security fencing
- High-illum LED lighting, Re-light windows, Gas Overhead Heaters
- Six (6) Grade Level 16' x 16' Rollup Doors
- High Security Fencing
- Office Space and Restrooms to suit

- **\$11.97 PSF Year Net Blended Lease Rate**
12% Office to Warehouse Ratio

APN - 191206-32404

DANIEL TILLEY
 COLDWELL BANKER COMMERCIAL
 509.952.7555 | Cell
 509.248.5050 | Office
 dftilley@hotmail.com
 dftilleycommercial@cbar.com





**COLDWELL
BANKER
COMMERCIAL**

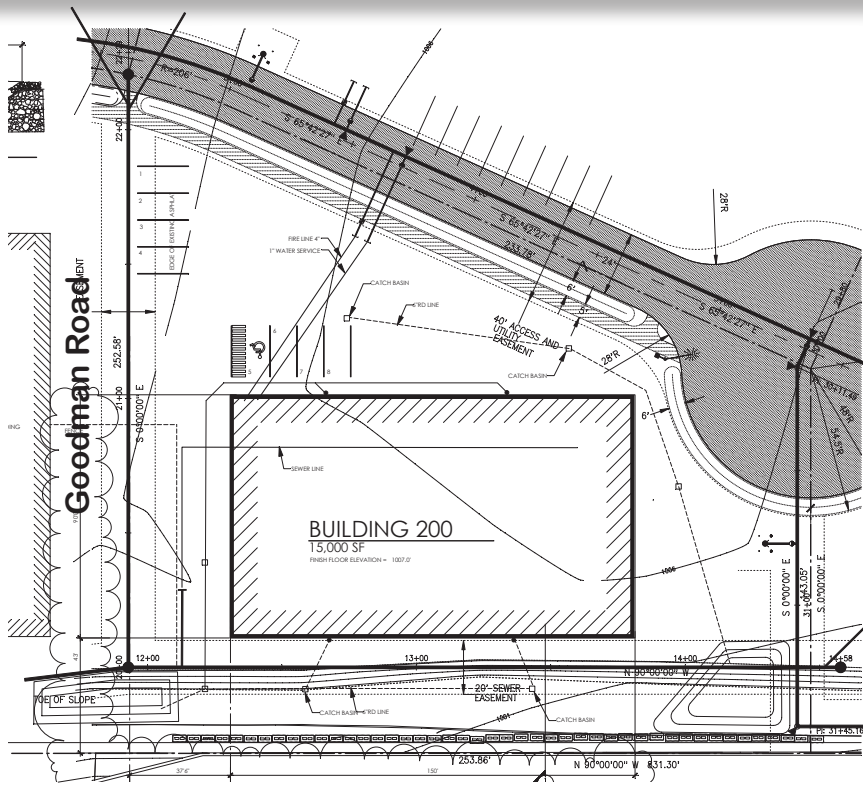
26' Clearspan Industrial Warehouse

15,000 sf



2751 Goodman Road - Building 200, Union Gap, WA

**Under Construction
Spring 2024**



DIGITAL DESIGN & DEVELOPMENT, LLC.
1000 W. LINCOLN
SUNNYVALE, WASHINGTON 98150
509 833 4100
SERVICES@DDBD.COM

PROJECT:
**GOODMAN 200
CLEAR CREEK CAMPUS**
UNION GAP, WA.

DRAWING TITLE:
SITE PLAN

DRAWING DATA:
DRAWING DATE: JULY 19, 2022
FILE # GOODMAN 200
DRAWN BY: SHL

**Under Construction
Spring 2024**

REVISIONS:
11/7/22
REVISED BY: ATB/SHL

All information contained herein is deemed reliable but not guaranteed



**COLDWELL
BANKER
COMMERCIAL**

(509) 248-5050



**COLDWELL
BANKER
COMMERCIAL**

26' Clearspan Industrial Warehouse

15,000 sf



2751 Goodman Road - Building 200, Union Gap, WA

15,000 SF

DANIEL TILLEY
COLDWELL BANKER COMMERCIAL

509.952.7555 | Cell
509.248.5050 | Office
dftilley@hotmail.com
dftilleycommercial@cbar.com

All information contained herein is deemed reliable but not guaranteed



**COLDWELL
BANKER
COMMERCIAL**

(509) 248-5050