

6911 METROPOLITAN BLVD

BARNHART, MO 63012



6911 METROPOLITAN BLVD

PROPERTY DETAILS

STEVE BAHN

314.503.7601 (CELL)

314.849.5858 (OFFICE)

Steve@bahnrealty.com

BRIAN MCCUNE

314.276.5493 (CELL)

314.849.5858 (OFFICE)

Brian@bahnrealty.com

- **Lot 1:** 1.61-acre parcel directly behind Express Mart
- **Lot 2:** 0.77-acre site adjacent to a newly built Express Mart c-store
- **Visibility:** Excellent exposure from Hwy 55 with frontage on Metropolitan Blvd off Route M exit
- **Traffic Counts:** 42,356 vehicles per day on Hwy 55
- **Nearby Retailers:** McDonald's, Walgreens, AutoZone
- **Utilities:** All utilities to site
- **Zoning:** CC2



Stephen F. Bahn Commercial Real Estate . 5024 Griffin Road . St. Louis, MO 63128

The information herein is not warranted although it has been obtained by the owner of the property or from other sources. It is subject to change without notice. Sellers and brokers make no representation as to the environmental or other conditions of the property and recommend that Purchaser investigate fully.



6911 METROPOLITAN BLVD

PROPERTY DETAILS

STEVE BAHN

314.503.7601 (CELL)

314.849.5858 (OFFICE)

Steve@bahnrealty.com

BRIAN MCCUNE

314.276.5493 (CELL)

314.849.5858 (OFFICE)

Brian@bahnrealty.com



Stephen F. Bahn Commercial Real Estate . 5024 Griffin Road . St. Louis, MO 63128

The information herein is not warranted although it has been obtained by the owner of the property or from other sources. It is subject to change without notice. Sellers and brokers make no representation as to the environmental or other conditions of the property and recommend that Purchaser investigate fully.



6911 METROPOLITAN BLVD

PROPERTY DETAILS

STEVE BAHN

314.503.7601 (CELL)

314.849.5858 (OFFICE)

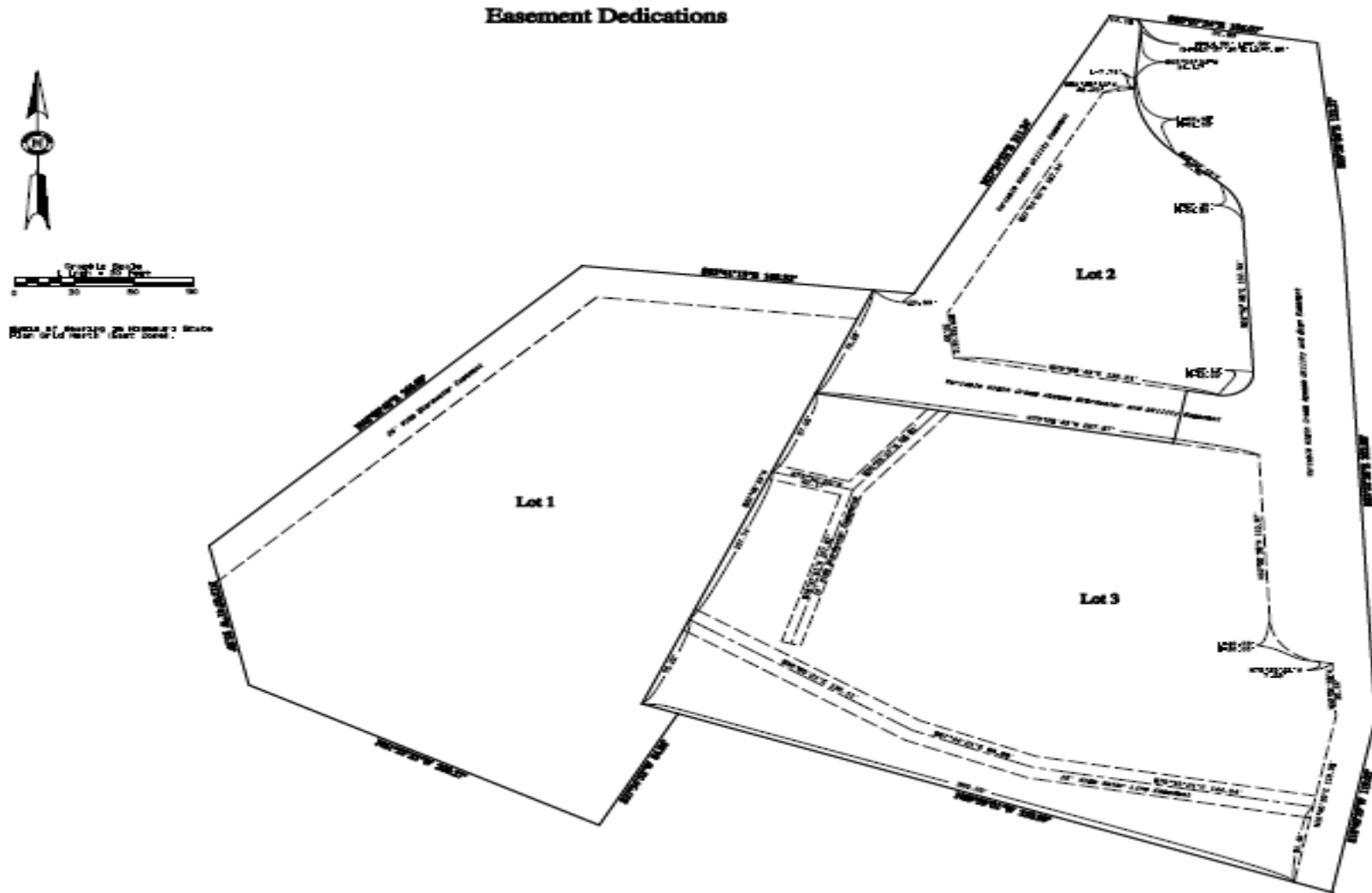
Steve@bahnrealty.com

BRIAN MCCUNE

314.276.5493 (CELL)

314.849.5858 (OFFICE)

Brian@bahnrealty.com



Stephen F. Bahn Commercial Real Estate . 5024 Griffin Road . St. Louis, MO 63128

The information herein is not warranted although it has been obtained by the owner of the property or from other sources. It is subject to change without notice. Sellers and brokers make no representation as to the environmental or other conditions of the property and recommend that Purchaser investigate fully.



6911 METROPOLITAN BLVD

PROPERTY LOCATION

STEVE BAHN

314.503.7601 (CELL)

314.849.5858 (OFFICE)

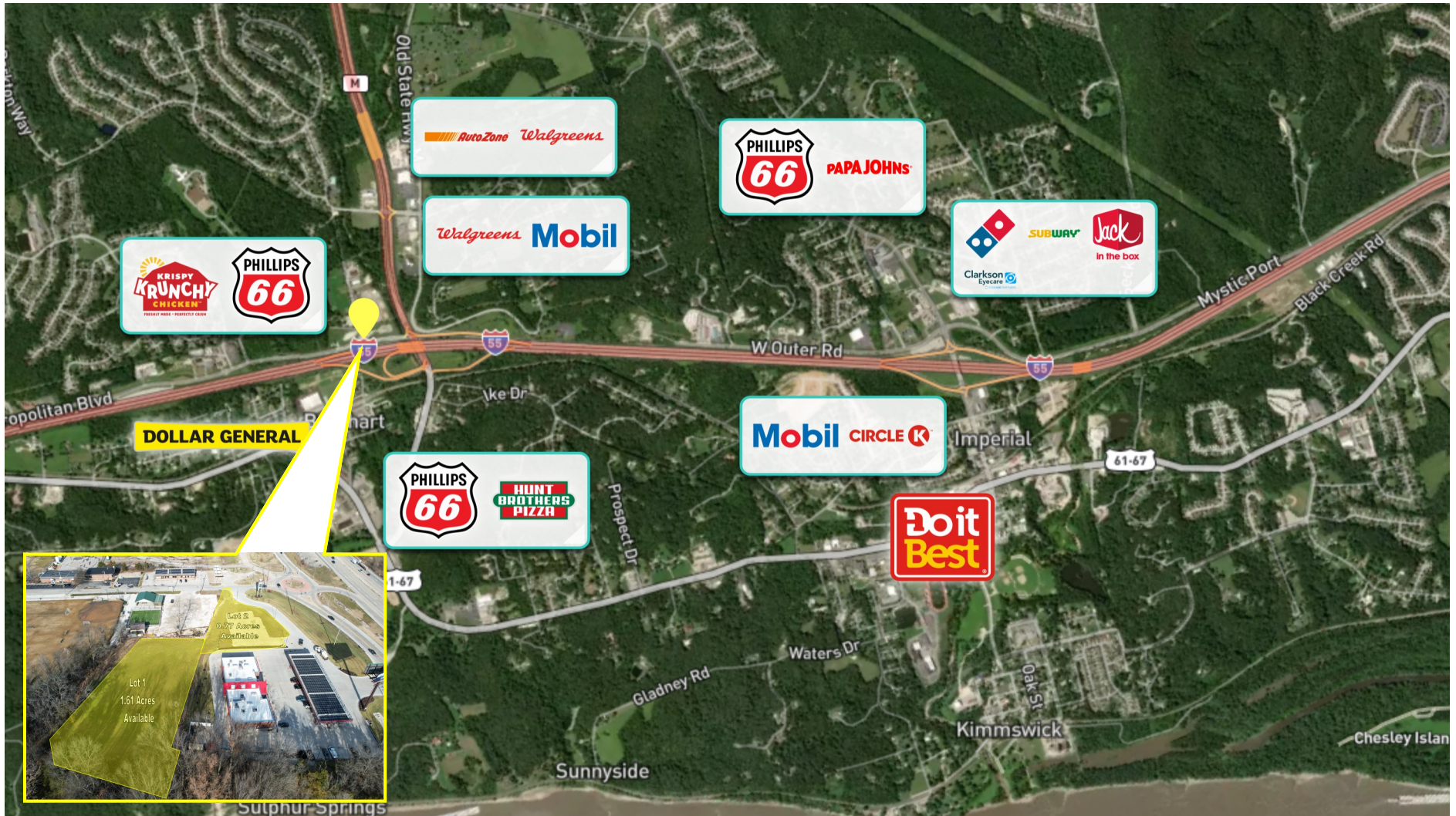
Steve@bahnrealty.com

BRIAN MCCUNE

314.276.5493 (CELL)

314.849.5858 (OFFICE)

Brian@bahnrealty.com



Stephen F. Bahn Commercial Real Estate . 5024 Griffin Road . St. Louis, MO 63128

The information herein is not warranted although it has been obtained by the owner of the property or from other sources. It is subject to change without notice. Sellers and brokers make no representation as to the environmental or other conditions of the property and recommend that Purchaser investigate fully.

