

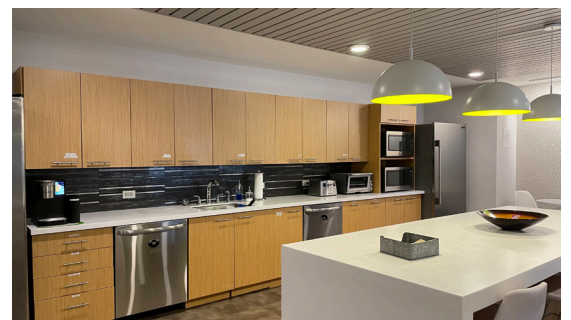
# 135 S. LASALLE

**11,133 SF**  
**HIGH-END**  
**SUBLEASE WITH**  
**FURNITURE FOR**  
**TECH OR OPEN**  
**SPACE USER**

Class A Value at Class C Prices

## BUILDING & AREA HIGHLIGHTS

- Beautiful historic building with classic architecture
- Located in the heart of the financial district
- Easy EL and bus access
- Building's lobby has bank and restaurants



# 135 S. LASALLE

## SUITE 2025 11,133 SF

### SPACE FEATURES

- Asking rate: \$28.00/RSF/full gross
- Gently used spec space
- Fully furnished
- 8 private offices
- Bench seating for up to 56
- Large conference room seats 14, small conference room seats 6, and meeting room seats 4
- Large open gallery kitchen off of entrance

