

SIERRA BUSINESS PARK

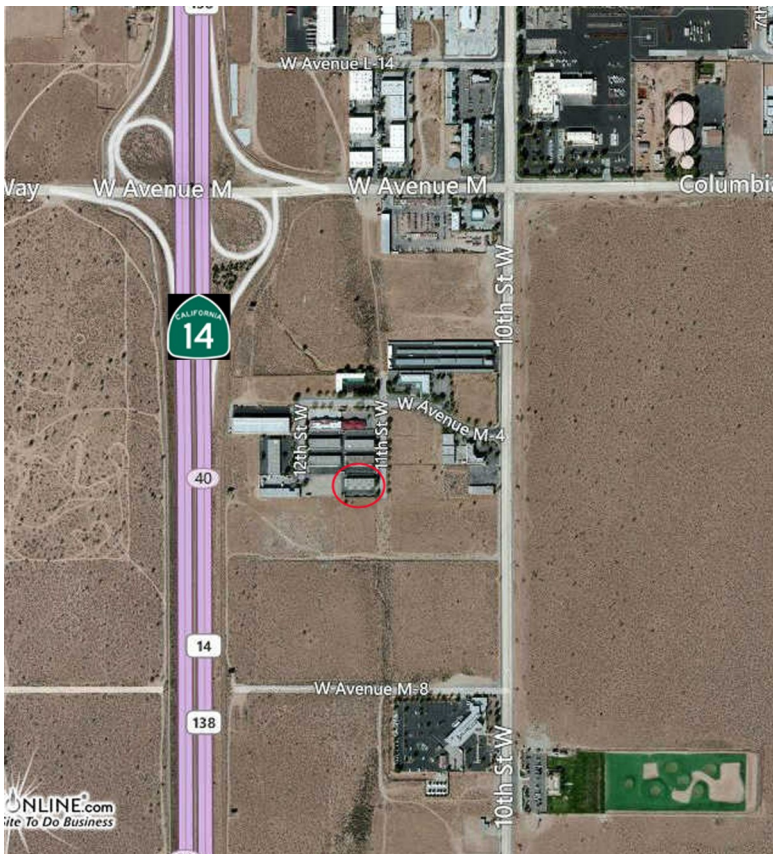
41747 11th Street West #D

Palmdale, CA 93551

FOR LEASE



**COLDWELL BANKER
COMMERCIAL**
VALLEY REALTY



PROPERTY DETAILS

Bldg Size:	6.756+/-sf
Available:	1,080+/-sf
Lease Price:	\$1,500/month
Lease Type:	Modified Gross
Year Built:	1987
Zoning:	OF (Office Flex)
Construction:	Concrete Tilt-up

PROPERTY OVERVIEW

1,080+/-sf of professional office space located in the Sierra Business Park! This oak trimmed office offers a strategic "mid-cities" location convenient to both Lancaster and Palmdale with convenient freeway access.

FOR MORE DETAILS CONTACT:

Harvey Holloway BRE #00594721
harvey@cbcvalleyrealty.com

Direct 661.948.2644 x 22
Fax 661.945.2524

Main 661.948.2644
Cell 661.609.8173

42402 N. 10th Street West Ste "E"
Lancaster, CA 93534

CBCValleyrealty.com

Coldwell Banker Commercial and the Coldwell Banker Commercial Logo are registered service marks licensed to Coldwell Banker Real Estate LLC. Each Office is Independently Owned and Operated.

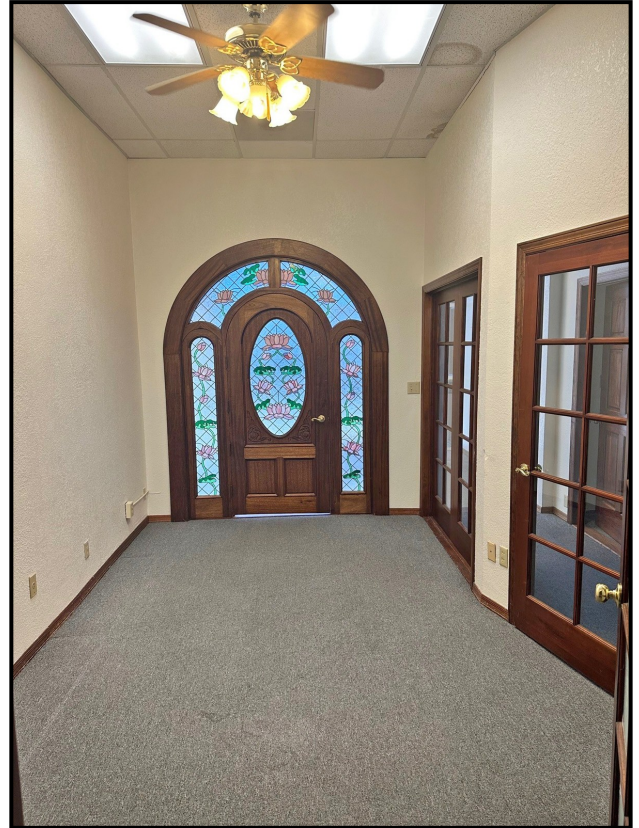
SIERRA BUSINESS PARK

41747 11th Street West #D
Palmdale, CA 93551

FOR LEASE



COLDWELL BANKER
COMMERCIAL
VALLEY REALTY



FOR MORE DETAILS CONTACT:

Harvey Holloway BRE #00594721
harvey@cbcvalleyrealty.com

Direct 661.948.2644 x 22
Fax 661.945.2524

Main 661.948.2644
Cell 661.609.8173

42402 N. 10th Street West Ste "E"
Lancaster, CA 93534

CBCValleyrealty.com

Coldwell Banker Commercial and the Coldwell Banker Commercial Logo are registered service marks licensed to Coldwell Banker Real Estate LLC. Each Office is Independently Owned and Operated.