

For Lease
8,100 RSF Office Space

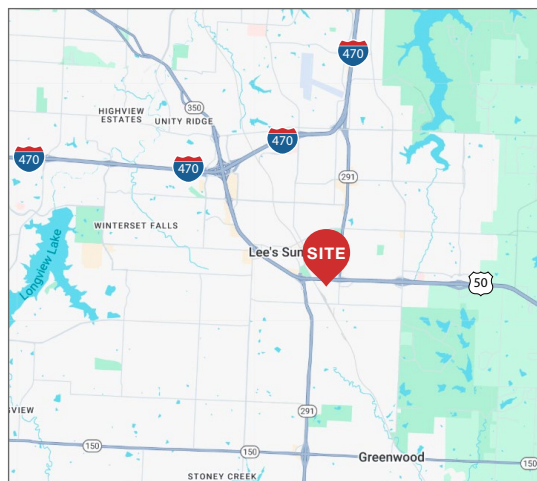


NAIHeartland

1009 SE Browning Street
Lee's Summit, MO 64081

Property Features

- 8,100 RSF Office Space
- 26 private offices, 2 executive offices, 2 conference rooms
- Quick access to Highways 50 and 291
- 2.35:1,000 SF parking ratio
- Lease Rate: \$12.00 PSF Full Service (\$8,100.00 per month)



For more information:

Joe O'Neill, CCIM

+1 913 890 2010

joe@nai-heartland.com

NO WARRANTY OR REPRESENTATION, EXPRESS OR IMPLIED, IS MADE AS TO THE ACCURACY OF THE INFORMATION CONTAINED HEREIN, AND THE SAME IS SUBMITTED SUBJECT TO ERRORS, OMISSIONS, CHANGE OF PRICE, RENTAL OR OTHER CONDITIONS, PRIOR SALE, LEASE OR FINANCING, OR WITHDRAWAL WITHOUT NOTICE, AND OF ANY SPECIAL LISTING CONDITIONS IMPOSED BY OUR PRINCIPALS NO WARRANTIES OR REPRESENTATIONS ARE MADE AS TO THE CONDITION OF THE PROPERTY OR ANY HAZARDS CONTAINED THEREIN ARE ANY TO BE IMPLIED.

4400 College Boulevard Suite 170
Overland Park, Kansas 66211
+1 913 362 1000

nai-heartland.com

For Lease

8,100 RSF Office Space



2025 Income	1 Mile	2 Mile	3 Mile
Median Household Income	\$82,620	\$78,588	\$86,905



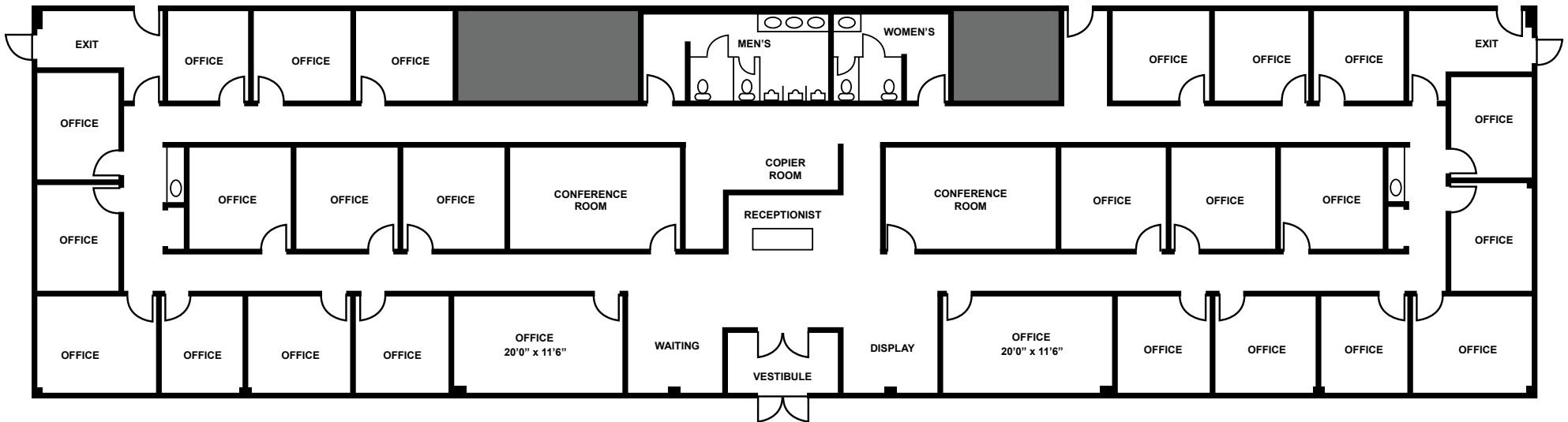
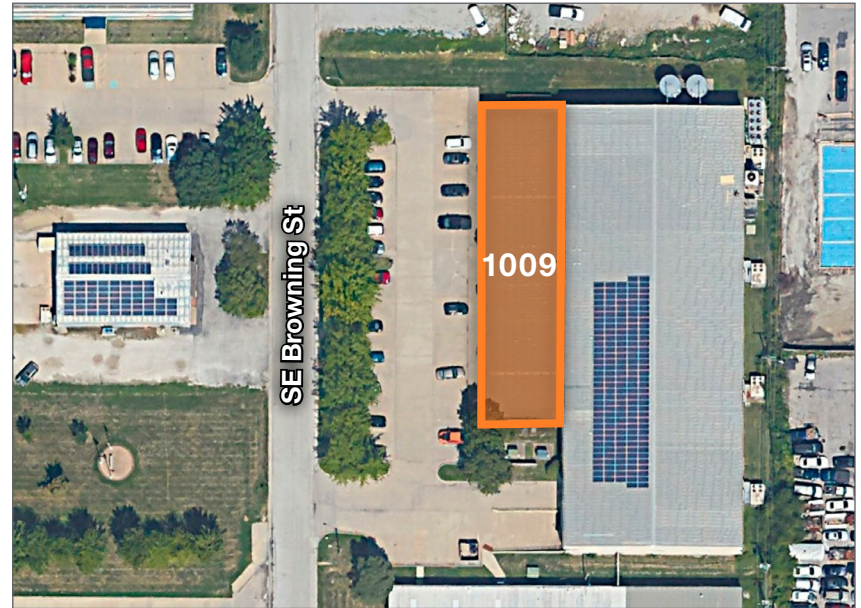
For more information:
Joe O'Neill, CCIM
 +1 913 890 2010 • joe@nai-heartland.com

4400 College Boulevard Suite 170
 Overland Park, Kansas 66211
 +1 913 362 1000
nai-heartland.com

For Lease

8,100 RSF Office Space

8,100 RSF



For more information:

Joe O'Neill, CCIM

+1 913 890 2010 • joe@nai-heartland.com

4400 College Boulevard Suite 170
Overland Park, Kansas 66211
+1 913 362 1000
nai-heartland.com