

229 FRONT STREET

(Between Peck Slip and Beekman St.)

Open

YES!
WE ARE
OPEN
SATURDAYS
BRUNCH

229 FRONT STREET

FACTS & FIGURES

TOTAL AREA

1,881 sf

TOTAL FRONTAGE

27'

CEILING HEIGHT

Up to 13'

POSSESSION

Immediate

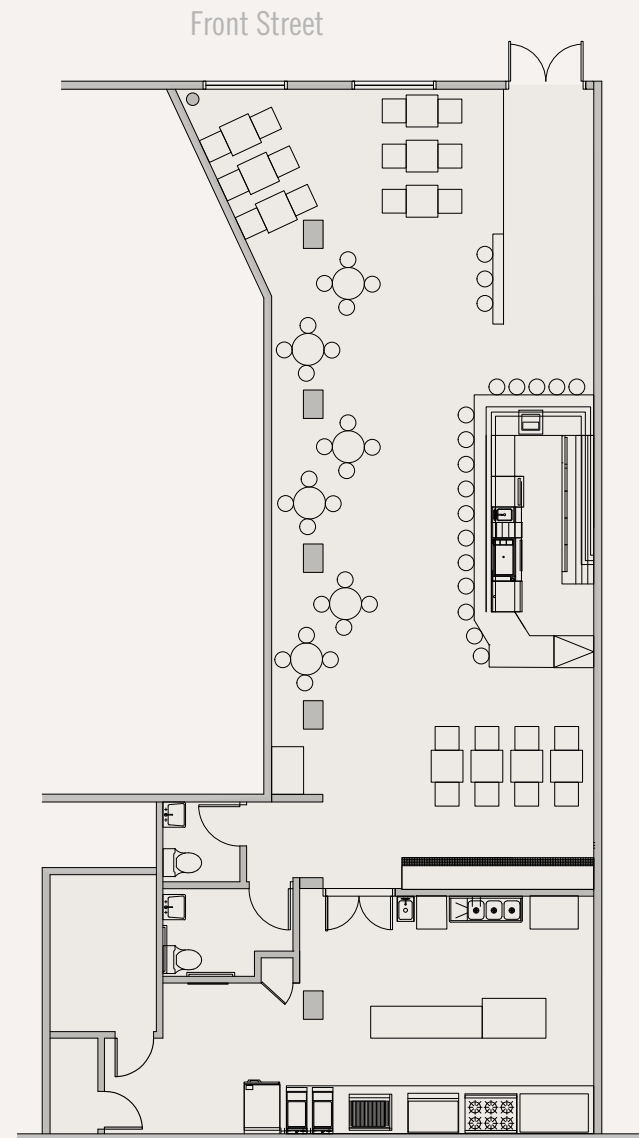
SPACE HIGHLIGHTS

Opportunity for a superb restaurant buildout

Fully equipped and vented commercial kitchen

Currently planned with central bar
and peripheral dining

Alternate uses considered





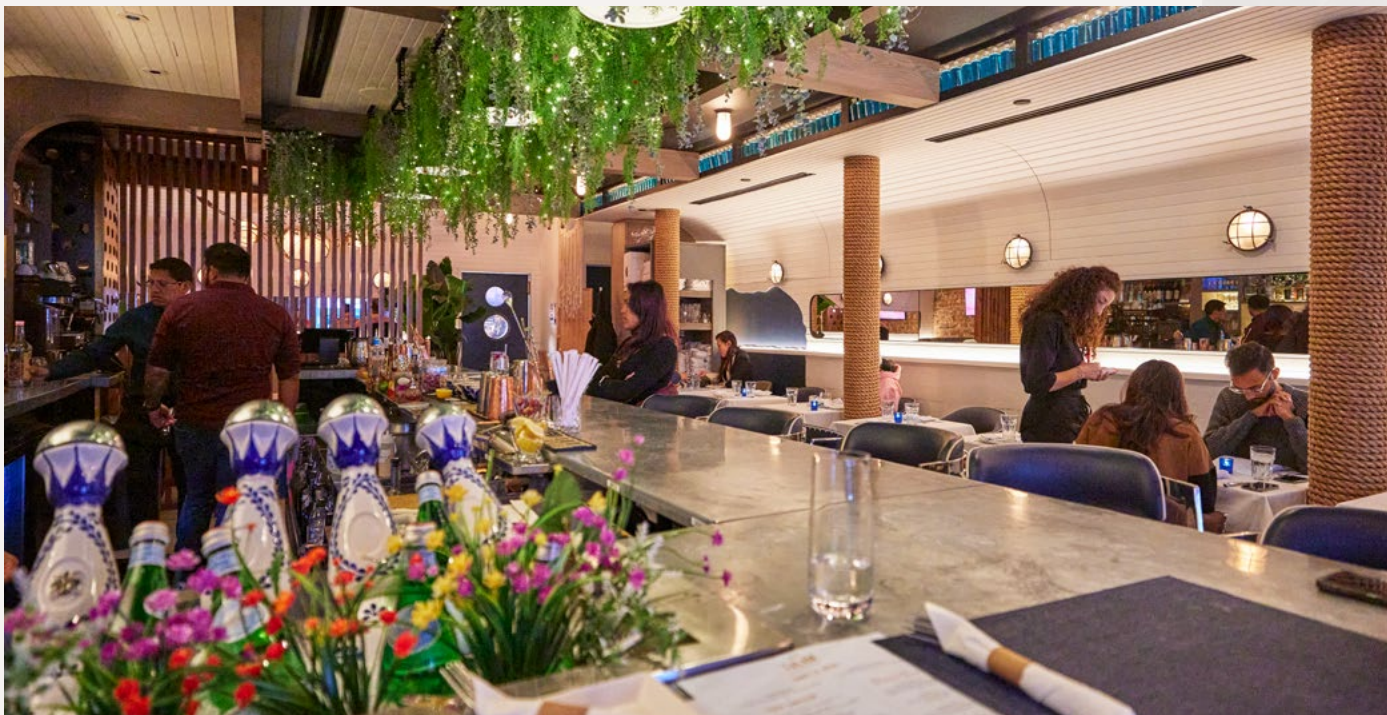
COASTAL MODERN

Blending seaside vibes with thoughtful nods to the neighborhood's nautical roots, this recently renovated space invites an upscale casual atmosphere.

229 FRONT STREET



**Exposed concrete
and original timbers...**



...strike a welcome
balance with natural
light and white wood.



27,715,365

Annual riders at
Fulton Street Station



1,051,748

Annual ferry
passengers at
Wall Street terminal



22 HOTELS /

3,470 ROOMS
within a 5min walk



938 RESIDENTIAL UNITS

under construction in Seaport District

230,000 SF

of new office space under construction
in Seaport District



**2,991 SEAPORT DISTRICT
RESIDENTS**

with an average HHI of \$205,860. (Seaport District defined as eight blocks bound by Dover Street & Peck Slip (N), Pearl and Front streets (W), John Street (S), and East River (E).)



**MAJOR
SEAPORT
OFFICE
TENANTS:**

Nike, ESPN,
Stripe, UNICEF,
Health & Home Care,
Allied World Alliance,
The Legal Aid Society



14 MILLION

tourists visit
Lower Manhattan
annually



**60+ SUMMER
CONCERTS**

at Pier 17 with 3,250+
concert-goers each

THE NEIGHBORHOOD

SOUTH STREET SEAPORT





THE NEIGHBORHOOD





LEASING CONTACTS



ZACH NATHAN
ZNathan@ksrny.com
240.731.8333

BRANDON BERGER
BBerger@ksrny.com
646.236.8525

HUNTER LAZAN
HLazan@ksrny.com
772.559.5195



KAREN ROSE
KRose@durst.org
212.667.8705