



10201 IMPERIAL AVE  
**CUPERTINO**

**RARE ±2,880 SF OFFICE/RETAIL BUILDING FOR SALE**  
OWNER USER OPPORTUNITY IN CUPERTINO



## PROPERTY OVERVIEW



**PRICE:** \$1,600,000(\$555.56/SF)

**YEAR BUILT:** 1952

**BUILDING SIZE:** ±2,880 SF

**ZONING:** P(ML)

**LOT SIZE:** ±6,240 SF

**APN:** 357-18-006



# RARE ±2,880 SF OFFICE/RETAIL BUILDING FOR SALE

## OWNER USER OPPORTUNITY IN CUPERTINO

- ±2,880 SF Building For Sale in Cupertino on Imperial Avenue off Stevens Creek Blvd.
- Owner User Opportunity: Building is currently Vacant.
- ±6,240 SF Lot with Small Yard in Rear.
- Located on Imperial Avenue in Cupertino, with easy access to Highway 85, minutes from De Anza College, Whole Foods, TJ Maxx & HomeGoods, Target, and many other national retailers on Stevens Creek & S De Anza Blvd.
- The Property is in the **P(ML)** Zoning Designation which allows for uses such as Animal clinics and hospitals facilities for bathing, clipping, trimming, and similar services for pets, kennels, auto sales, repair, storage, manufacturing, research and development, warehouses, wholesale/storage activities, machinery sales and rentals, building material sales, personal services, retail establishments.
- Located in a **Very High Barrier to Entry Market** with average household incomes in excess of \$210,000 in a 1-mile radius from the subject property.



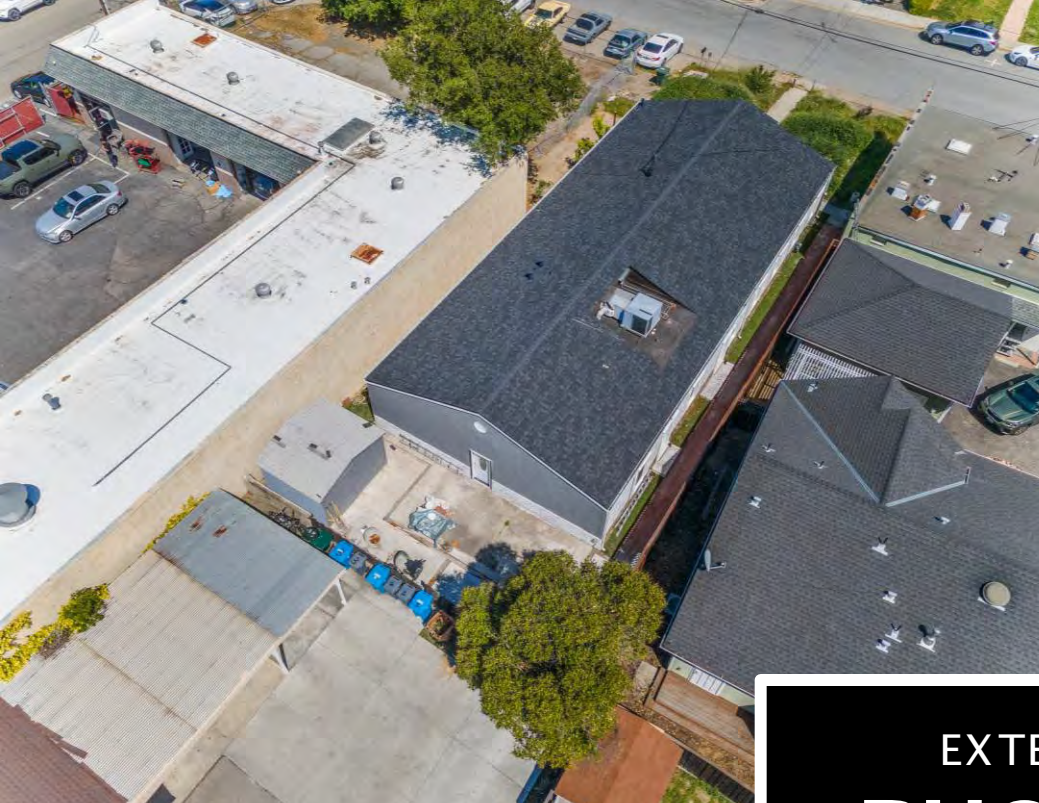


EXTERIOR  
**PHOTOS**



The Information contained herein has been obtained from sources we deem reliable. We cannot, however, assume responsibility for its accuracy.





EXTERIOR  
**PHOTOS**

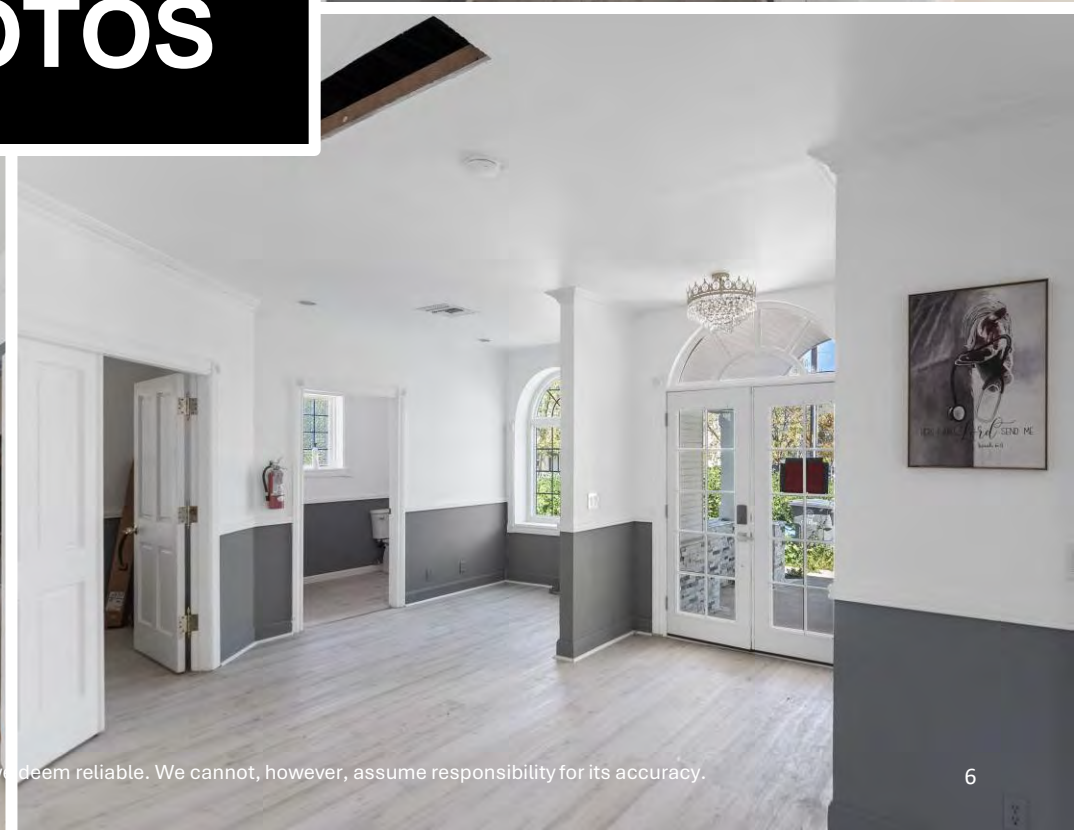


The Information contained herein has been obtained from sources we deem reliable. We cannot, however, assume responsibility for its accuracy.





INTERIOR  
**PHOTOS**

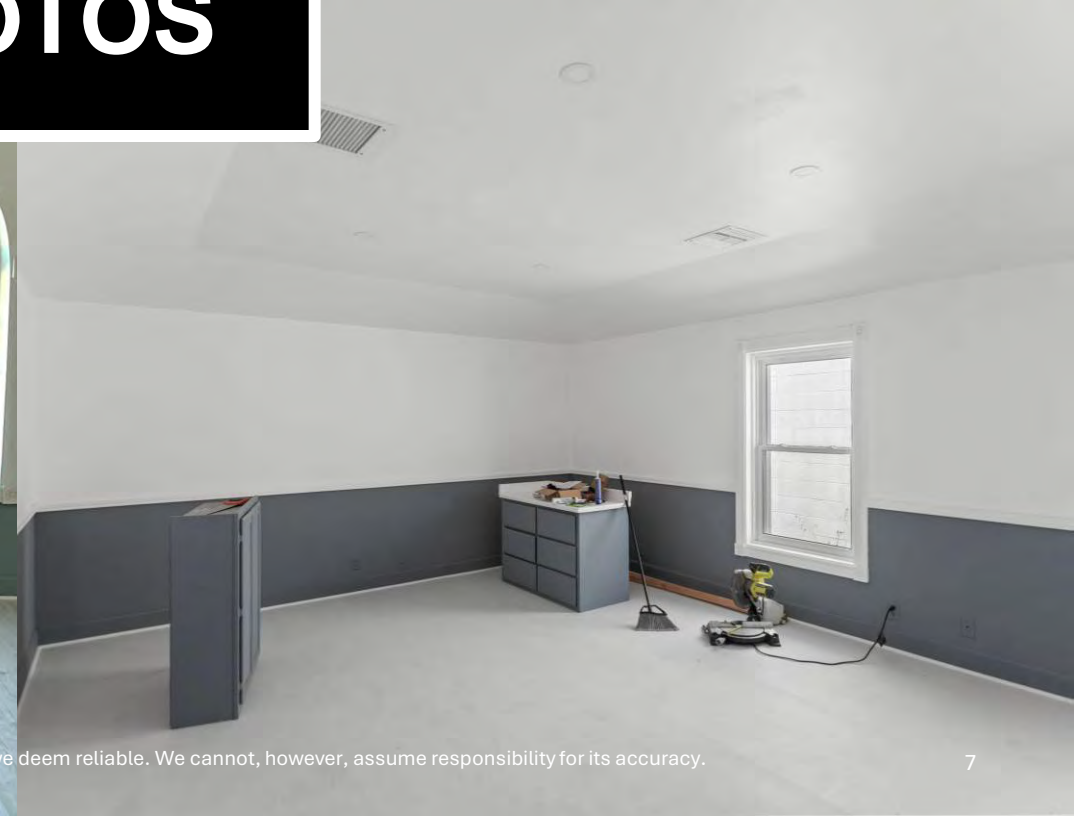


The Information contained herein has been obtained from sources we deem reliable. We cannot, however, assume responsibility for its accuracy.





# INTERIOR PHOTOS



The information contained herein has been obtained from sources we deem reliable. We cannot, however, assume responsibility for its accuracy.





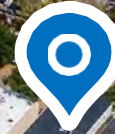




STEVENS CREEK BLVD

LO MITA AVE

IMPERIAL AVE



The Information contained herein has been obtained from sources we deem reliable. We cannot, however, assume responsibility for its accuracy.



# DEMOGRAPHICS

## 2025 SUMMARY

## 1-MILE

## 5-MILE

## 10-MILE

Population

16,662

378,866

1,033,611

Households

5,584

136,631

383,153

Average Household Size

2.9

2.7

2.6

Owner Occupied Housing Units

3,454

67,134

173,872

Renter Occupied Housing Units

1,875

64,398

196,167

Median Age

44.8

39.7

38.5

Median Household Income

\$211,669

\$185,881

\$159,843

Average Household Income

\$210,137

\$197,322

\$180,570



10201 IMPERIAL AVE  
CUPERTINO

**DAVID TAXIN**  
Partner  
Lic. #00983163  
408.966.5919  
dtaxin@moinc.net

**JEREMY AWDISHO**  
Vice President  
Lic. #02064232  
650.814.4510  
jeremy@moinc.net

