



1251-1255 HOWARD STREET  
SAN FRANCISCO, CA

FOR LEASE

± 6,915 - 13,830 SQFT

FULL BUILDING  
POTENTIAL ± 25,310 SF

CREATIVE COMMERCIAL  
BUILDING CENTRALLY  
LOCATED IN SOMA

JAY CAHAN  
Lic.01005130  
+1 415 867 4040  
jcahan@hcmcommercial.com

BEN DURHAM  
Lic.01211050  
+1 415 601 4994  
bdurham@hcmcommercial.com



1234 Mariposa Street, San Francisco, California 94107  
www.hcmcommercial.com

## ADDRESS

1251-1255 Howard Street  
San Francisco, CA 94103

## SIZE

**Total Size: 13,830 ± RSF**

1251 Howard: 6,915 ± RSF

1255 Howard: 6,915 ± RSF

\*Can be combined with:

1245 Howard: 6,480 ± RSF

1263 Howard: 5,000 ± RSF

## FEATURES

- » Nine (9) Skylights per unit
- » Two (2) Roll Up Doors
- » Local Building Management
- » 14' to Bottom of Truss Ceilings
- » Alley Entrance on Tehama Street
- » New Roof and New Skylights
- » Full Building Signage Available

## AVAILABLE

Now

## ZONING

WMUG - WSOMA Mixed Use General

## LEASE RATE

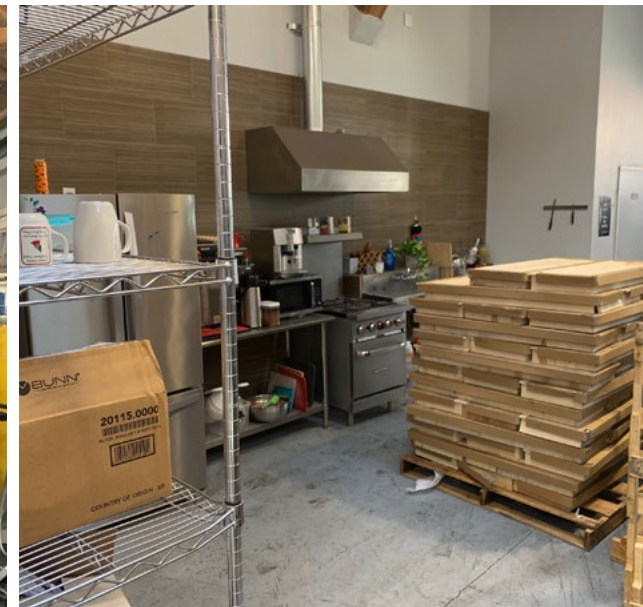
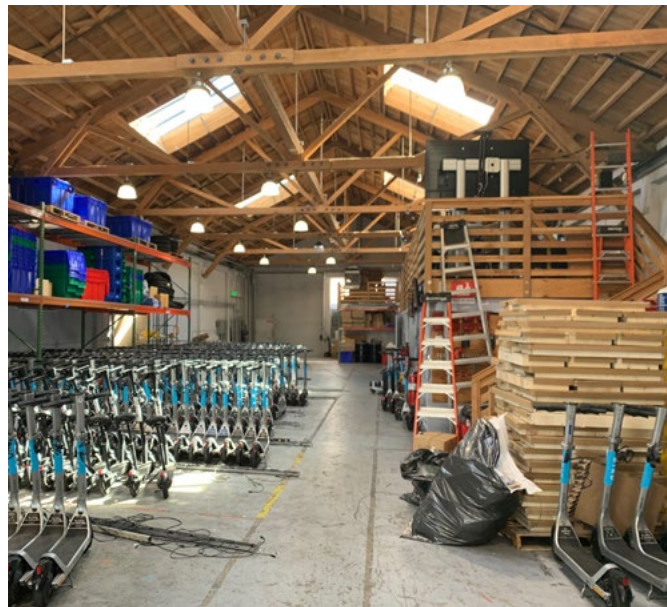
\$2.25 psf/month, IG

BEN DURHAM  
Lic.01211050

415.601.4994  
bdurham@hcmcommercial.com

JAY CAHAN  
Lic.01005130

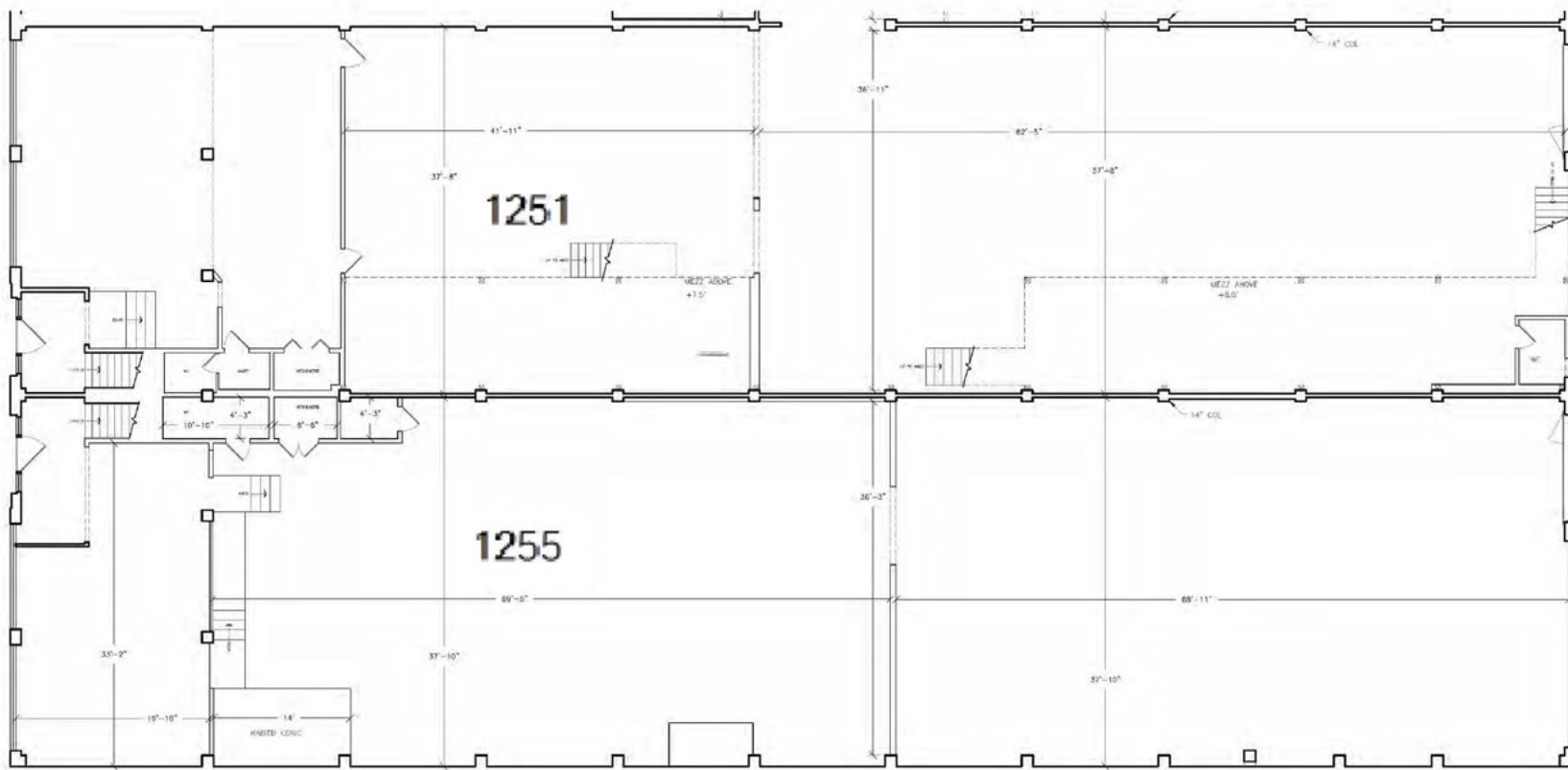
415.867.4040  
jcahan@hcmcommercial.com



# 1251-1255 Howard Street

San Francisco, CA

# FLOOR PLAN



## Ground Floor

## Second Story Offices

