

# AVAILABLE

 PURSUIT  
DEVELOPMENT

 **Insite**  
COMMERCIAL  
REAL ESTATE



## 4,934 SF BLDG W/ DRIVE THRU

431 US HWY 441, LADY LAKE, FLORIDA 32159

ALEX BISBEE  
407-864-6444

PAYTON FOSTER  
407-461-8080



 [CLICK TO VIEW SITE IN GOOGLE MAPS](#)

**PROPERTY HIGHLIGHTS**

- **4,934 SF former bank building with drive-thru on 2.88 acre parcel.**
- For Lease or BTS. Re-development opportunities available.
- Ample parking and pylon signage facing US 441.
- Multiple points of ingress and egress.
- Located in Lady Lake's thriving retail corridor along US 441.

**2025 DEMOGRAPHICS**



Population	1 Mile	8,018
	3 Miles	37,923
	5 Miles	85,654



Employees	1 Mile	7,506
	3 Miles	35,111
	5 Miles	79,737



Average Household Income	1 Mile	\$70,624
	3 Miles	\$84,966
	5 Miles	\$92,366



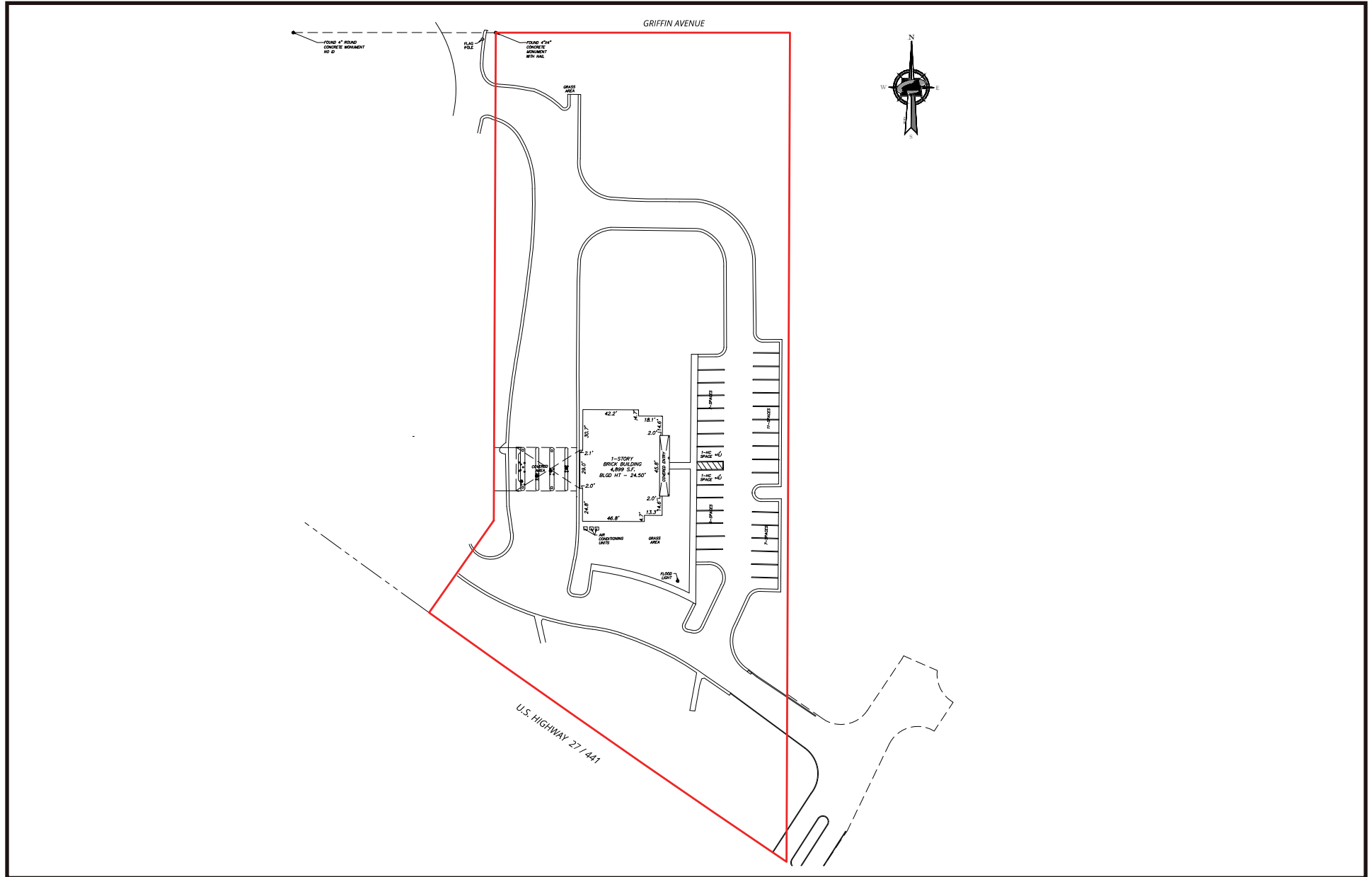
Households	1 Mile	5,071
	3 Miles	23,827
	5 Miles	54,398











FOR MORE  
INFORMATION  
PLEASE CONTACT

**ALEX BISBEE**

407-864-6444

ABISBEE@INSITEREI.COM

**PAYTON FOSTER**

407-461-8080

PFOSTER@INSITEREI.COM

