

46321-46365

Five Mile Rd

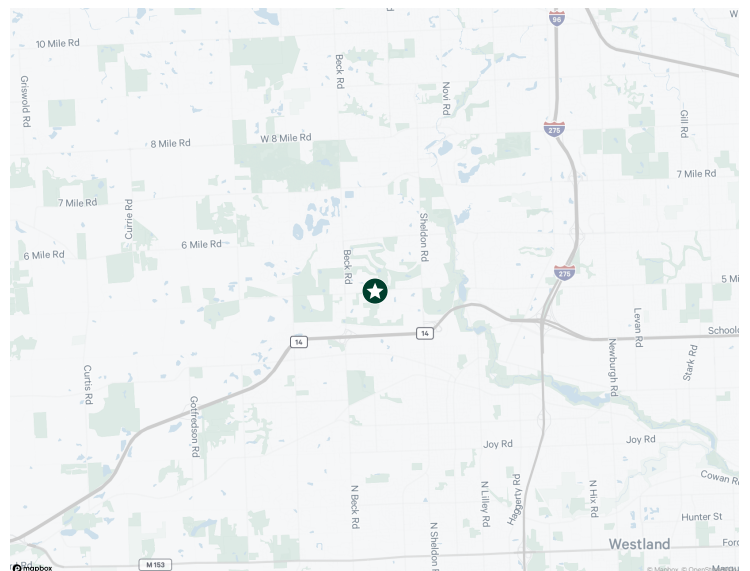
Plymouth, MI

Office Building With Flex Capability



Property Includes

- + Approximately 11,000 SF Available
- + One (1) Grade Level Door
- + Open Concept With Private Offices & Conference Rooms
- + Fronts On Five Mile Rd Between Sheldon & Beck Roads
- + Many Amenities Nearby



46321-46365 Five Mile Rd
Plymouth, MI

For Lease

Property Aerial



Contact Us

Michael Balow

Vice President

+1 248 351 2009

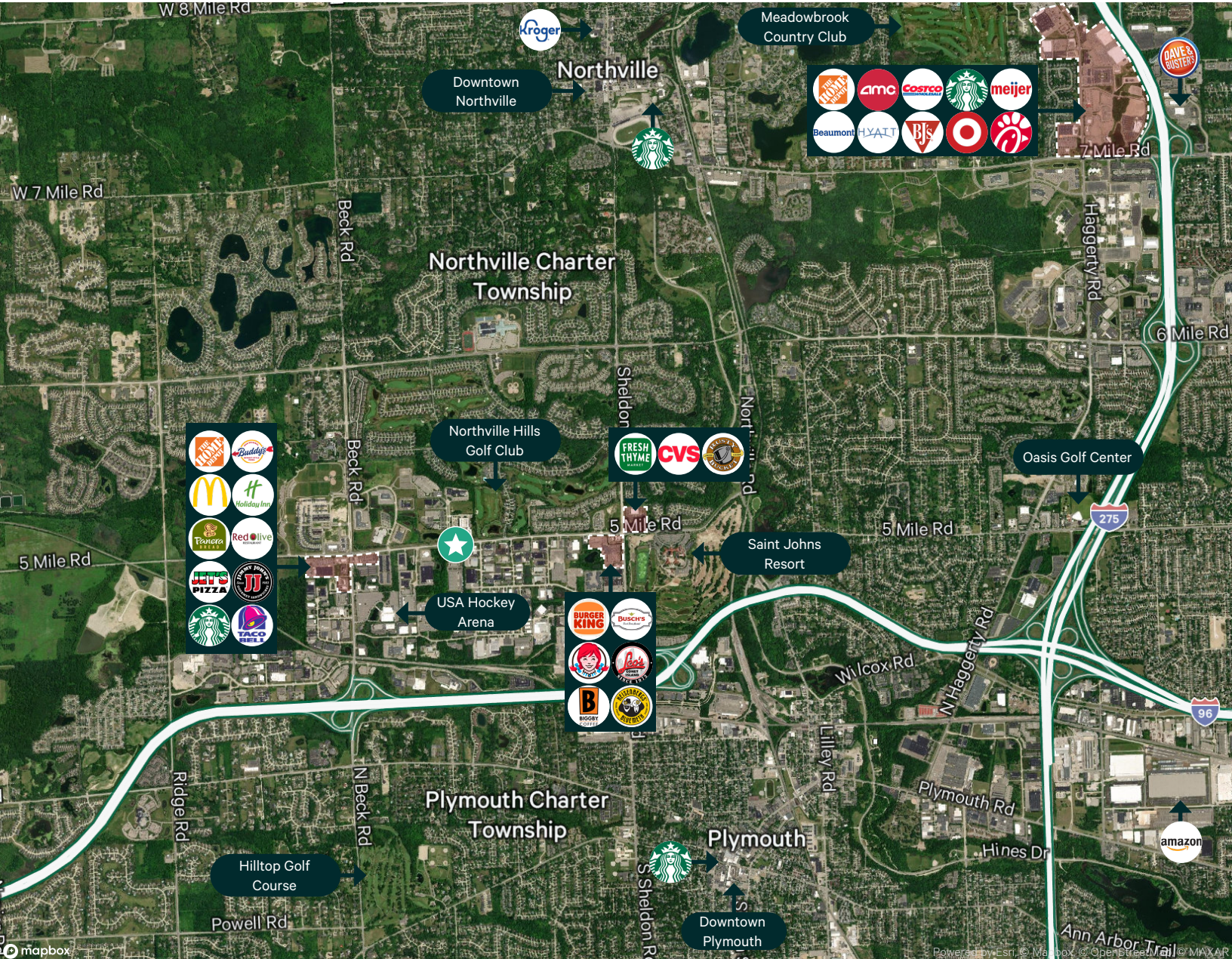
michael.balow@cbre.com

© 2024 CBRE, Inc. All rights reserved. This information has been obtained from sources believed reliable but has not been verified for accuracy or completeness. CBRE, Inc. makes no guarantee, representation or warranty and accepts no responsibility or liability as to the accuracy, completeness, or reliability of the information contained herein. You should conduct a careful, independent investigation of the property and verify all information. Any reliance on this information is solely at your own risk.

www.cbre.com/detroit

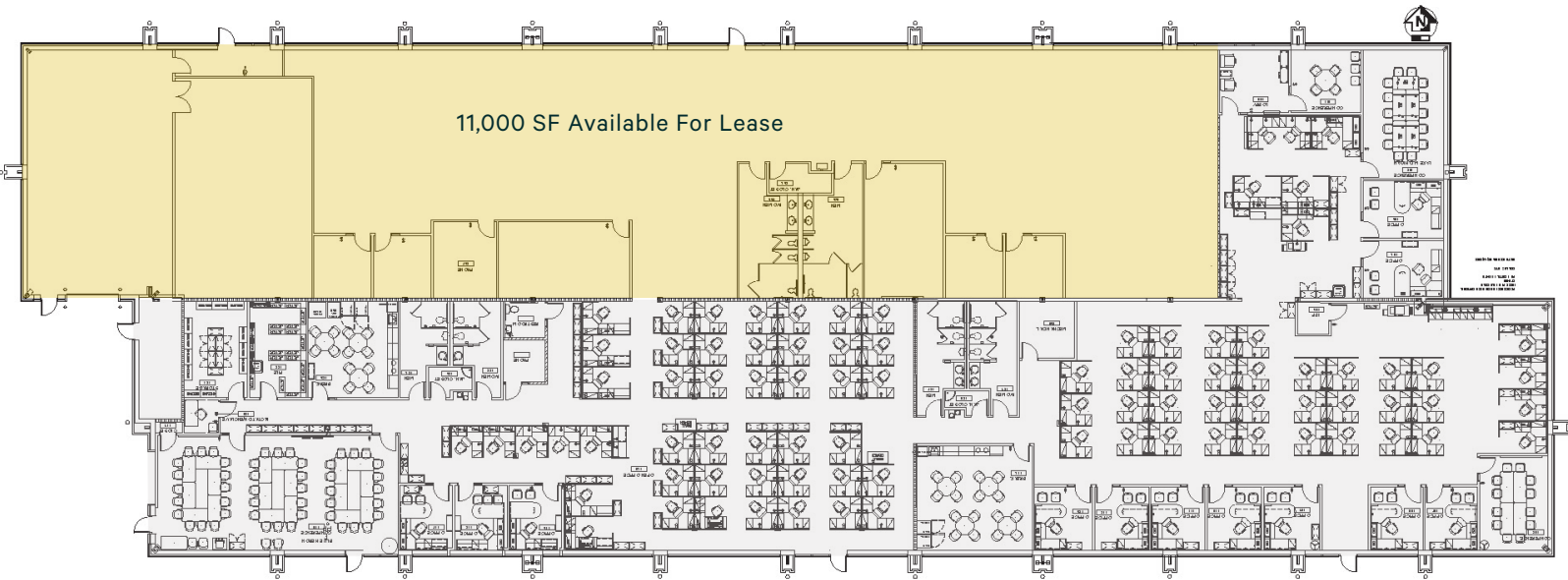
CBRE

Local Aerial



© 2024 CBRE, Inc. All rights reserved. This information has been obtained from sources believed reliable but has not been verified for accuracy or completeness. CBRE, Inc. makes no guarantee, representation or warranty and accepts no responsibility or liability as to the accuracy, completeness, or reliability of the information contained herein. You should conduct a careful, independent investigation of the property and verify all information. Any reliance on this information is solely at your own risk.

Floor Plan



Contact Us

Michael Balow

Vice President

+1 248 351 2009

michael.balow@cbre.com

© 2024 CBRE, Inc. All rights reserved. This information has been obtained from sources believed reliable but has not been verified for accuracy or completeness. CBRE, Inc. makes no guarantee, representation or warranty and accepts no responsibility or liability as to the accuracy, completeness, or reliability of the information contained herein. You should conduct a careful, independent investigation of the property and verify all information. Any reliance on this information is solely at your own risk.

Property Overview

Available Space:	11,000 SF	Divisible:	Possible
County:	Wayne	Additional Space Available:	No
Parking:	147 Surface 5.6/1,000	Floors:	1
Developed Space:	Yes	Year Built:	2000
Rent/Yr:	\$13.75/SF	Minimum Term:	5 Years
		Available:	Flexible

Comments

- + \$13.75 PSF Net of gas, electricity, and suite janitorial
- + Up to 11,000 sf available
- + Building is in move-in condition
- + Suites are in move-in condition
- + Small garage/lab space with grade level door
- + Property has immediate access to M-14 via sheldon or Beck Rds
- + Multiple hotels, retailers, and restaurants in the immediate area of the development

Contact Us

Michael Balow

Vice President
+1 248 351 2009
michael.balow@cbre.com

© 2024 CBRE, Inc. All rights reserved. This information has been obtained from sources believed reliable but has not been verified for accuracy or completeness. CBRE, Inc. makes no guarantee, representation or warranty and accepts no responsibility or liability as to the accuracy, completeness, or reliability of the information contained herein. You should conduct a careful, independent investigation of the property and verify all information. Any reliance on this information is solely at your own risk.