

Specifications

±22 Acres

Block 903, Lots 9 - 13

TOTAL LOT SIZE

Zoned NC (Neighborhood Commercial)
ZONING

Ideal Corner Lot Parcel
FEATURES

Ideal Uses Include Retail, Office,
Restaurants, Gas, Convenience,
Schools, House of Worship,
Day Care, Dormitories
USES

\$27,631.04

TAXES (2024)

Approx. 1.2 Miles to I-195

Approx. 5.8 Miles to Route 9

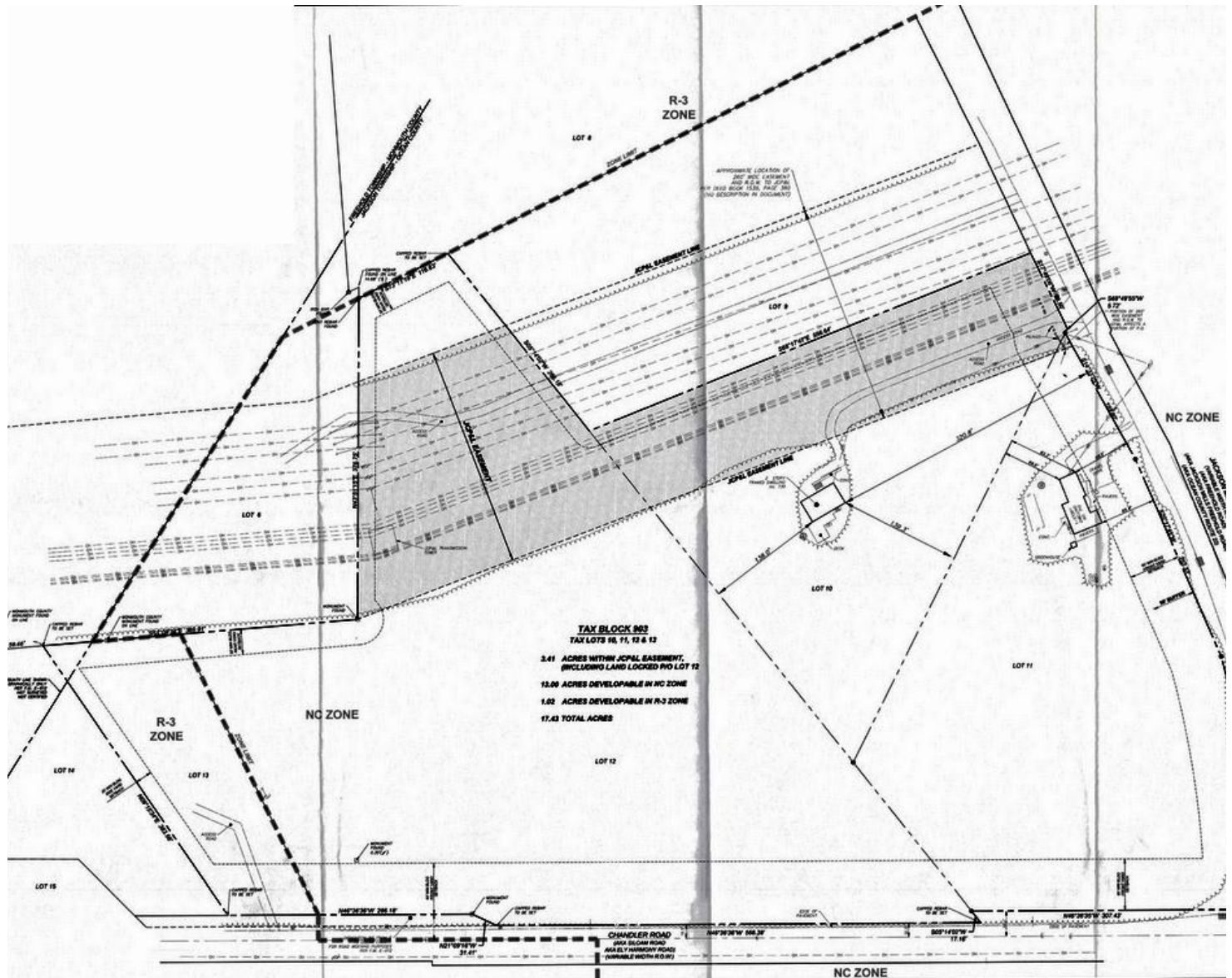
ACCESSIBILITY

Call for New Lower Price

SALE PRICE

For additional property information or to arrange an inspection, please contact the exclusive brokers:

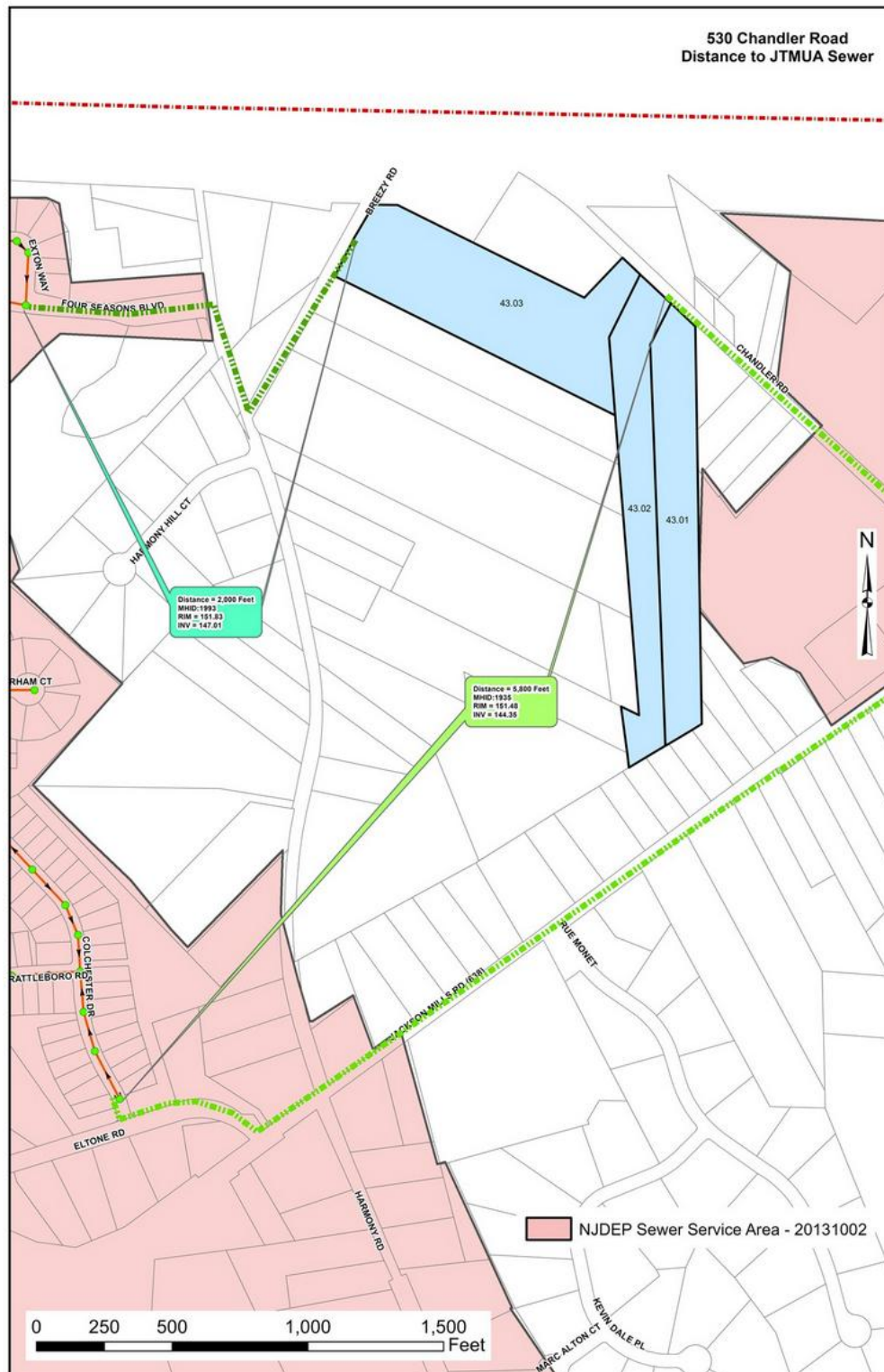
John R. Longo, *Senior Director*, 973.379.6644 x 129, jlongo@blauberg.com
Scott G. Savastano, *Executive Director*, 973.379.6644 x 147, sgsavastano@blauberg.com
Nicholas A. Savastano, *Associate*, 973.379.6644 x 234, nsavastano@blauberg.com
Patrick Clancy, *Associate*, 973.379.6644 x 238, pclancy@blauberg.com



For additional property information or to arrange an inspection, please contact the exclusive brokers:

John R. Longo, *Senior Director*, 973.379.6644 x 129, jlongo@blauberg.com
 Scott G. Savastano, *Executive Director*, 973.379.6644 x 147, sgsavastano@blauberg.com
 Nicholas A. Savastano, *Associate*, 973.379.6644 x 234, nsavastano@blauberg.com
 Patrick Clancy, *Associate*, 973.379.6644 x 238, pclancy@blauberg.com

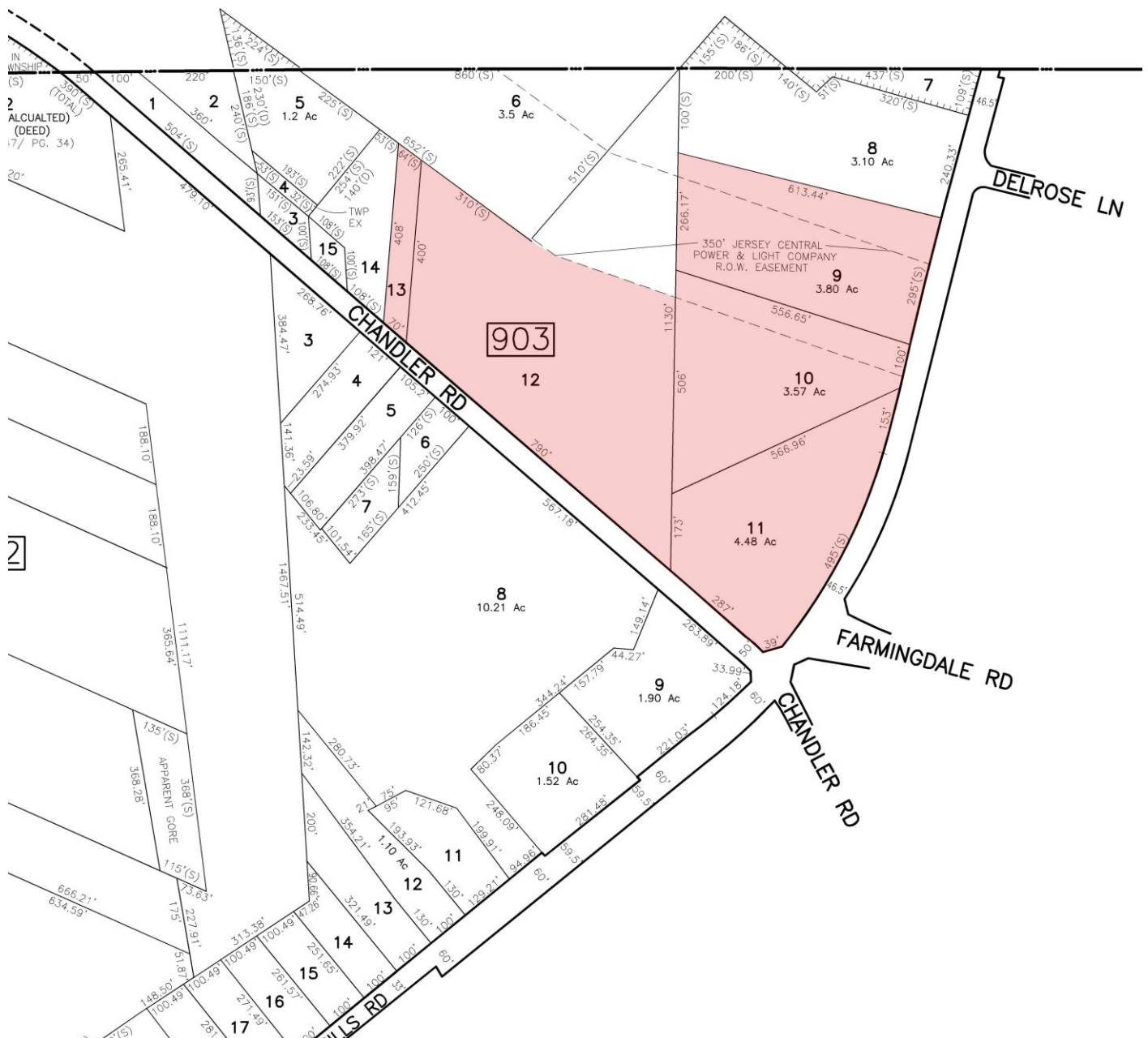
The information contained herein has been obtained from sources considered to be reliable, but no guarantee of its accuracy is made by this company. In addition, no representation is made respecting zoning, condition of title, dimensions, or any matters of a legal or environmental nature. Such matters should be referred to legal counsel for determination. Terms and conditions are subject to change without prior notice. Subject to errors and omissions.



For additional property information or to arrange an inspection, please contact the exclusive brokers:

John R. Longo, *Senior Director*, 973.379.6644 x 129, jlongo@blauberg.com
Scott G. Savastano, *Executive Director*, 973.379.6644 x 147, sgsavastano@blauberg.com
Nicholas A. Savastano, *Associate*, 973.379.6644 x 234, nsavastano@blauberg.com
Patrick Clancy, *Associate*, 973.379.6644 x 238, pclancy@blauberg.com

TOWNSHIP OF FREEHOLD
MONMOUTH COUNTY



For additional property information or to arrange an inspection, please contact the exclusive brokers:

John R. Longo, *Senior Director*, 973.379.6644 x 129, jlongo@blauberg.com
 Scott G. Savastano, *Executive Director*, 973.379.6644 x 147, sgsavastano@blauberg.com
 Nicholas A. Savastano, *Associate*, 973.379.6644 x 234, nsavastano@blauberg.com
 Patrick Clancy, *Associate*, 973.379.6644 x 238, pclancy@blauberg.com

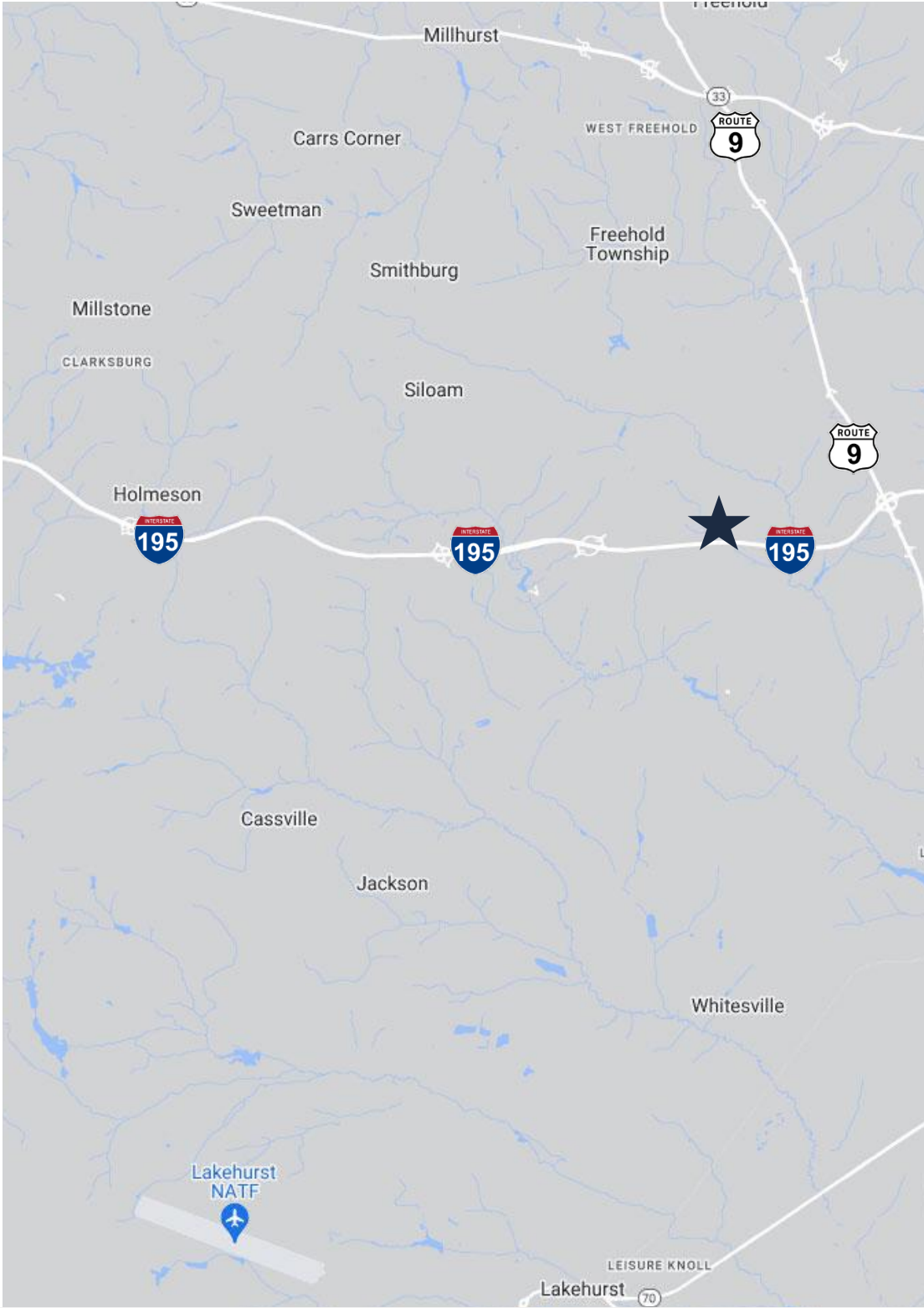
The information contained herein has been obtained from sources considered to be reliable, but no guarantee of its accuracy is made by this company. In addition, no representation is made respecting zoning, condition of title, dimensions, or any matters of a legal or environmental nature. Such matters should be referred to legal counsel for determination. Terms and conditions are subject to change without prior notice. Subject to errors and omissions.

- Total Population: 90,994
- Households: 32,228
- Median Household Income: \$118,128
- Average Household Size: 2.8
- Transportation to Work: 46,540
- Labor Force: 71,977

- Total Population: 349,175
- Households: 108,448
- Median Household Income: \$113,314
- Average Household Size: 3.2
- Transportation to Work: 161,901
- Labor Force: 260,031

- Total Population: 812,377
- Households: 299,134
- Median Household Income: \$113,599
- Average Household Size: 2.7
- Transportation to Work: 393,519
- Labor Force: 642,987

John R. Longo, *Senior Director*, 973.379.6644 x 129, jlongo@blauberg.com
 Scott G. Savastano, *Executive Director*, 973.379.6644 x 147, sgsavastano@blauberg.com
 Nicholas A. Savastano, *Associate*, 973.379.6644 x 234, nsavastano@blauberg.com
 Patrick Clancy, *Associate*, 973.379.6644 x 238, pclancy@blauberg.com



ACCESSIBILITY

	1.2 MI I-195
	5.8 MI Route 9

For additional property information or to arrange an inspection, please contact the exclusive brokers:

John R. Longo, *Senior Director*, 973.379.6644 x 129, jlongo@blauberg.com
Scott G. Savastano, *Executive Director*, 973.379.6644 x 147, sgsavastano@blauberg.com
Nicholas A. Savastano, *Associate*, 973.379.6644 x 234, nsavastano@blauberg.com
Patrick Clancy, *Associate*, 973.379.6644 x 238, pclancy@blauberg.com

The information contained herein has been obtained from sources considered to be reliable, but no guarantee of its accuracy is made by this company. In addition, no representation is made respecting zoning, condition of title, dimensions, or any matters of a legal or environmental nature. Such matters should be referred to legal counsel for determination. Terms and conditions are subject to change without prior notice. Subject to errors and omissions.