

239 West 105th Street

Between Broadway & Amsterdam Avenue | Upper West Side



239 West 105th Street

Between Broadway & Amsterdam Avenue | Upper West Side

SIZE: 2,300 SF Ground Floor
1,700 SF Basement
+ Outdoor Patio

FRONTAGE: 21' 7"

POSSESSION: Immediate

TRANSPORTATION: 1 2 3

HIGHLIGHTS:

- [Click here for virtual tour](#)
- 30' from the corner of Broadway
- Steps from Columbia University & campus housing
- Fully equipped kitchen with black iron venting
- Basement prep kitchen with walk-in fridge
- Two ADA compliant restrooms
- Skylight feature
- Neighbors include:
Mama's Too!, Serafina, Traviata Pizza II, KOKO Wings, Poke Doke, Lenscrafters, Bank of America

CONTACT OUR BROKERS FOR MORE INFORMATION

SOPHIA GAINES
SGaines@ksrny.com
917.902.6352

JACK KHASKI
JackK@ksrny.com
917.355.0559

ALBERT MANOPLA
AManopla@ksrny.com
212.380.8369



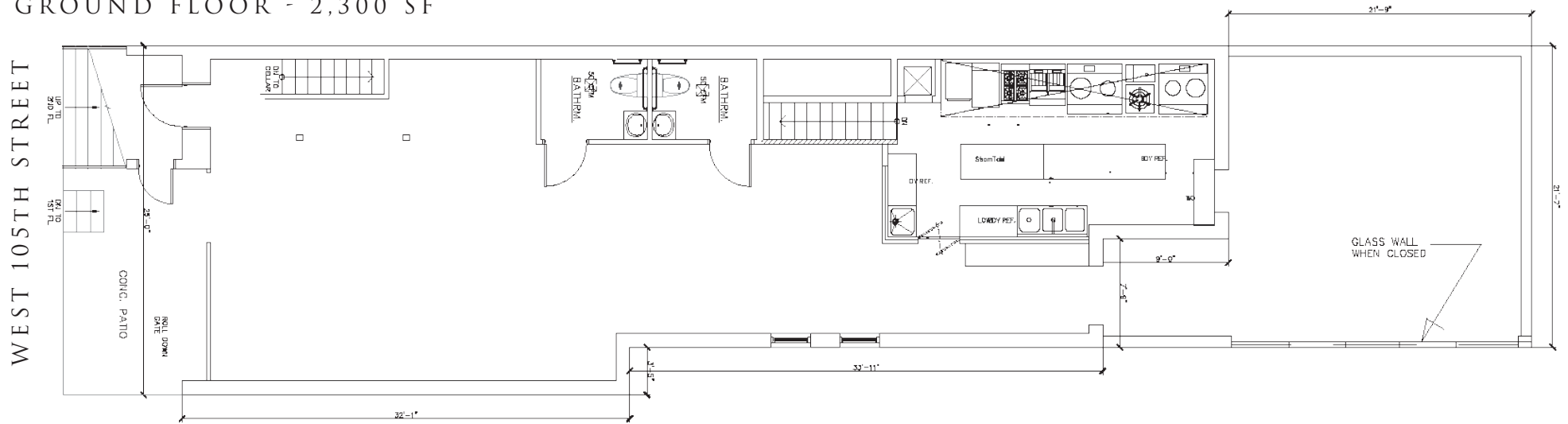
All information supplied in this marketing presentation and/or flyer is from sources deemed reliable and is furnished subject to errors, omissions, modifications, removal of listings from sale/lease and to any listing condition. Any square footage, dimensions, floor plans and/or technical data set forth are approximations and are subject to further elaboration/confirmation.



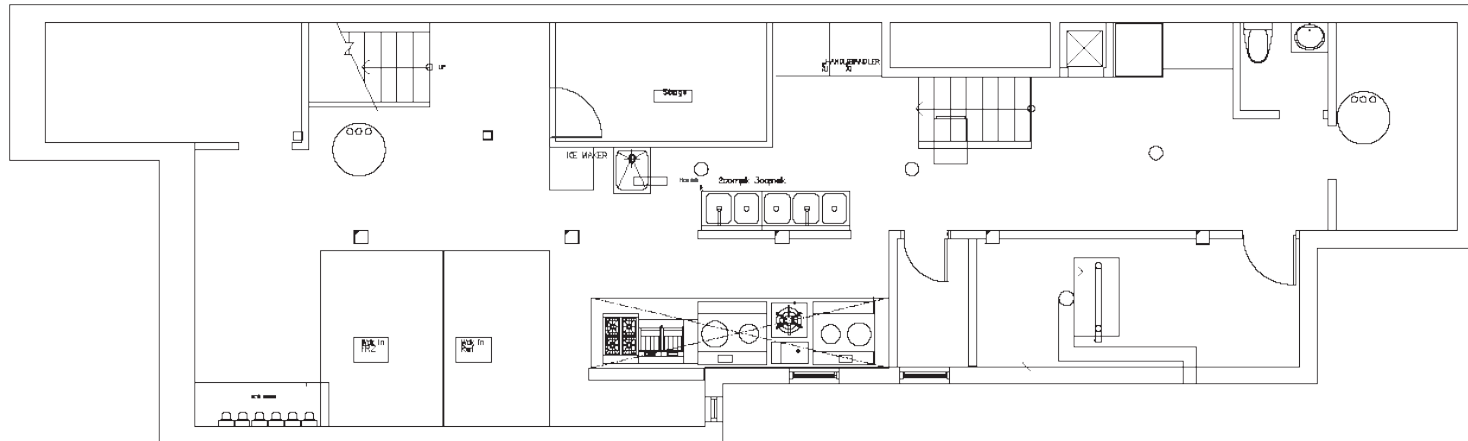
239 West 105th Street

Between Broadway & Amsterdam Avenue | Upper West Side

FLOOR PLANS:
GROUND FLOOR - 2,300 SF



BASEMENT - 1,700 SF



239 West 105th Street

Between Broadway & Amsterdam Avenue | Upper West Side

INTERIORS:



239

West 105th Street

Between Broadway & Amsterdam Avenue | Upper West Side

FOR MORE INFORMATION,
PLEASE CONTACT:

SOPHIA GAINES

917.902.6352 | SGaines@ksrny.com

JACK KHASKI

917.355.0559 | JackK@ksrny.com

ALBERT MANOPLA

212.380.8369 | AManopla@ksrny.com

