



Accelerating success.



Industrial | For Lease

Stand Alone Industrial Building

215 S Mountain Lands Drive | Orem, UT

Property Information

- 10,000 Total SF Available
- Office: 1,700 SF
- Warehouse: 8,300 SF
- 1 Dock High Door
- 3 Ground Level Doors
- 3 Phase Power
- Freeway Visibility
- Excellent Location
- Newly remodeled office space
- Available Immediately
- **Lease Rate: \$1.15 SF/NNN**

Contact:

James Yeates

Vice President
+1 801 995 0049
james.yeates@colliers.com

Justin Irvine

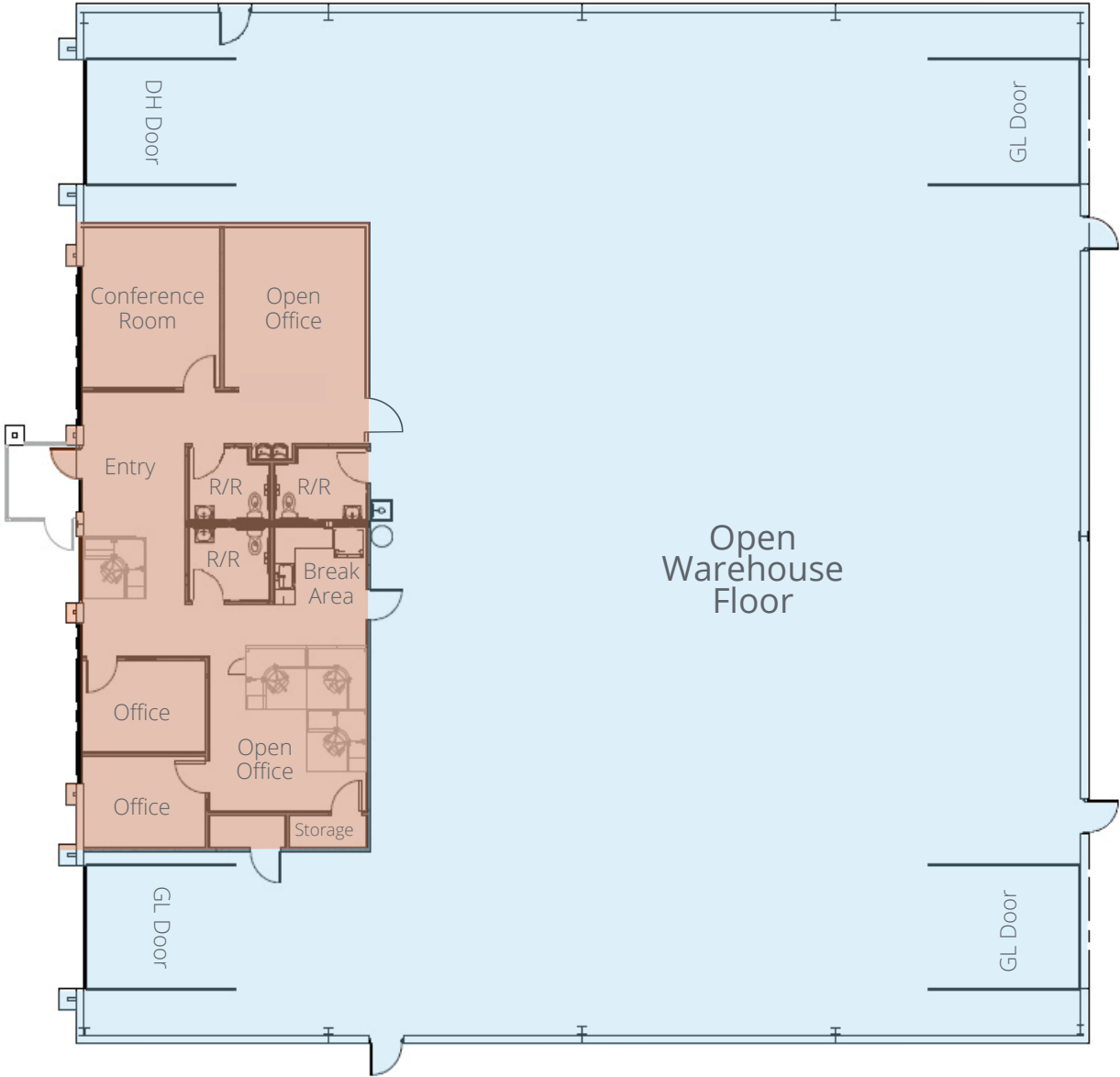
Vice President
+1 801 400 4260
justin.irvine@colliers.com

Colliers

2100 Pleasant Grove Blvd., Suite 200
Pleasant Grove, UT 84062
Main: +1 801 947 8300
colliers.com

Main Level Floorplan

- Office 1,700 SF
- Warehouse 8,300 SF



Aerial Map



Colliers
2100 Pleasant Grove Blvd., Suite 200
Pleasant Grove, UT 84062
Main: +1 801 947 8300
colliers.com

James Yeates
Vice President
+1 801 995 0049
james.yeates@colliers.com

Justin Irvine
Vice President
+1 801 400 4260
justin.irvine@colliers.com