



PLATINUM CENTRE III

South Louise Avenue

Fitness / Commercial Space For Lease



6909 South Louise Avenue
Sioux Falls, SD 57108



size

2,698 RSF
2,022 USF



price

\$16.00 per foot NNN
NNN estimate - \$6.39



location

High-profile location on South Louise Avenue, one of the strongest retail corridors in South Dakota!



traffic

Louise Avenue:
18,800 cars per day



layout

Wide open floor plan design, common area restrooms include showers.



co-tenancy

Avera Medical Campus, Starbucks, Culver's, Arby's, Circle K, Balleraena Dance Studio, kRav'N, Subway, Lewis, Sanford Clinic and more.

Information deemed reliable but not guaranteed.



Lake Lorraine | 2571 S. Westlake Drive #100
Sioux Falls, South Dakota 57106
VBclick.com | 605.361.8211



605.310.4509
Mike.Knudson@VBclick.com

AERIAL MAP



QDOBA

verizon

Jersey Mike's Subs

57th Street

NOODLES & COMPANY

McDonald's

First Interstate Bank

bp TACO JOHN'S

Vern Eide HONDA

INTERSTATE 229

Hilton Garden Inn

TRAIL RIDGE SENIOR LIVING COMMUNITY

INTERSTATE 229

Avera

HOMESWOOD SUITES BY HILTON

WELLS FARGO

BILLION AUTOMOTIVE FAMILY

Avera Behavioral Health

Holiday Inn Express

Starbucks

CORNERSTONE BANK

BIG MILKYWAY

69th Street

kw KELLER WILLIAMS

SANFORD HEALTH

Lewis

TownePlace Suites Marriott

Culver's SILVERSTAR CAR WASH

kBar N Bar & Grill

K

SECURITY NATIONAL BANK

South Louise Avenue

Avera

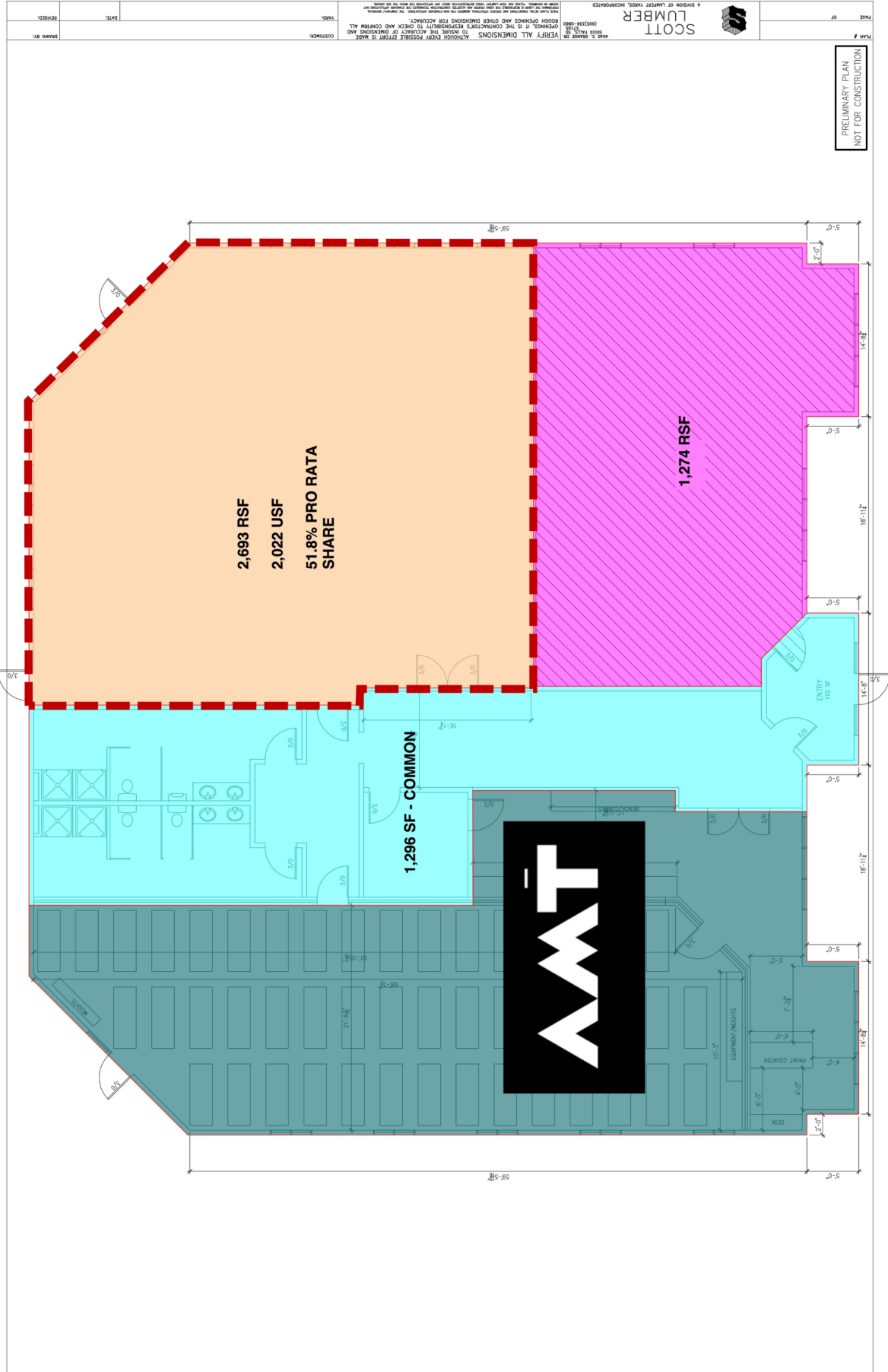
SITE



HARRISBURG EXPLORER ELEMENTARY



FLOOR PLAN



PHOTOS

