

MODERN RESIDENCE FOR SALE

1126 N. Charles St, Baltimore, MD 21201



ABOUT THE PROPERTY

Distinctive 3-Story Townhouse with elevator on historic Charles Street built of stone and brick circa 1900. The architecturally significant property features two gated and secure front entrances leading into a grand foyer with crystal chandelier, great room with fireplace, dining room with crystal chandelier and fireplace, bedroom with half bath, and large chef's kitchen with top-of-the-line equipment. The second floor features four bedrooms and four fireplaces, four full baths, and multi-media room. The third floor features the master bedroom and full bath, den, bedroom with full bath, exercise room and utility room. The lower level featuring a game room, built-in bar, family room, full bath, laundry, access to the exterior, landscaped courtyard, and 3-car garage is perfect for entertaining relatives or friends. Two additional exterior parking spaces are accessed from the alley via a Lift Master gate opener.

Contact Us



30 E. Padonia Road, Suite 504
Timonium, MD 21093



Visit Us
troutdaniel.com



Call Us
410.435.4004

Leo McDermott
202.744.6910
lmcdermott@troutdaniel.com



★ Property Overview



PROPERTY HIGHLIGHTS

Sale Price
\$2,850,000

Building Size
Gross: 15,380 SF / Finished 12,230 SF

Electrical Capacity
400 AMPS

Lot Size
5,314 SF

Heat & Air Conditioning
Central System with 5 Zones

Year Built / Renovated
1920 / 2006

Zoning
C-2; Permitted uses include multifamily, bed & breakfast, residential care facility, art gallery, offices, mixed-use

Real Estate Taxes
\$40,308

2023 Assessment
\$1,798,900

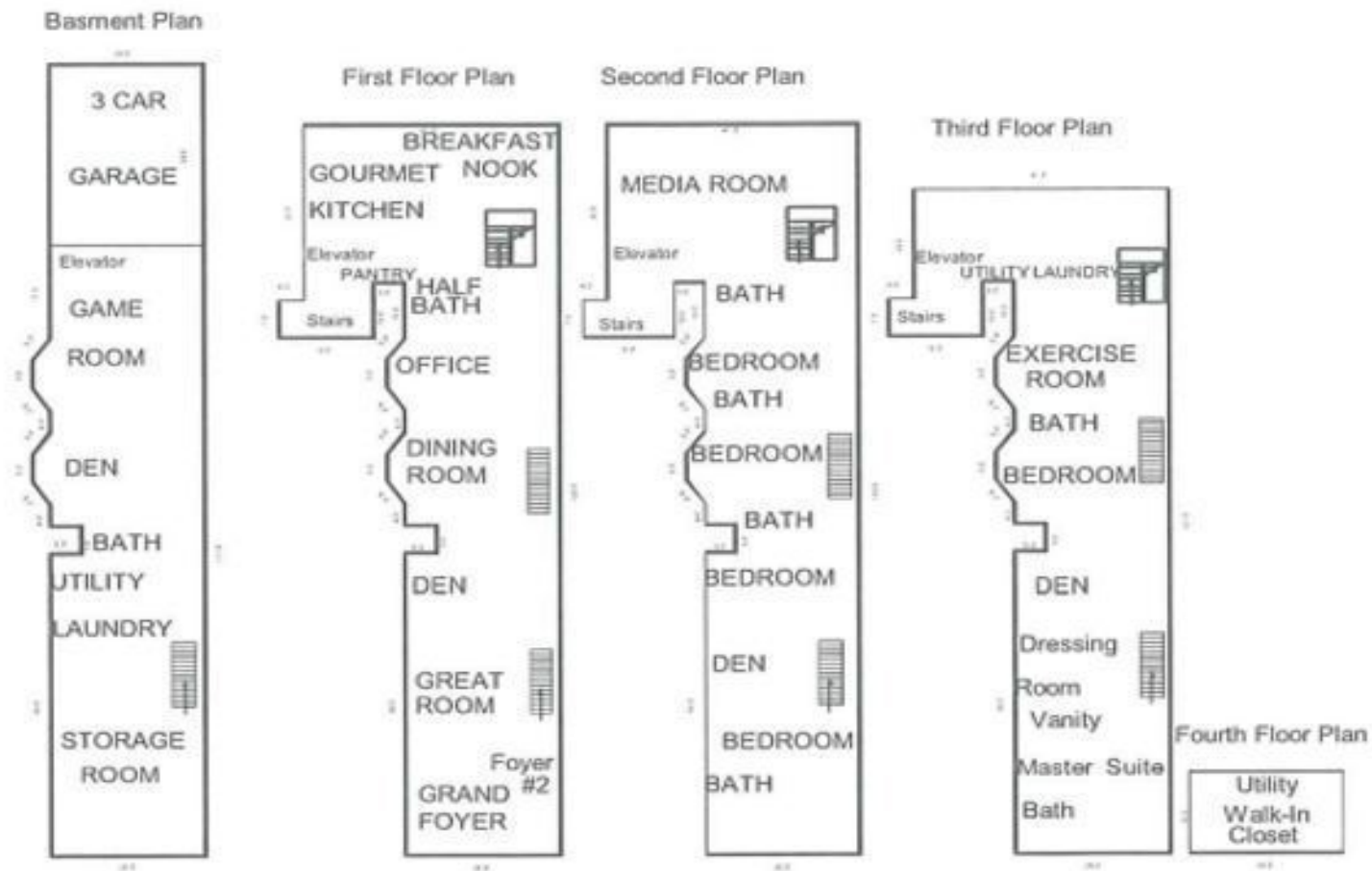
NEIGHBORHOOD

Mt. Vernon is widely considered the cultural and arts epicenter in Baltimore City. Mt. Vernon is one of Baltimore's oldest and well-preserved neighborhoods and is designated as a National Historic Landmark District. Major employers in the neighborhood include Chase Brexton Health Services, the University of Baltimore, Agora, and MICA. Major new residential and commercial development include the 68-unit Morton Street Carriage Houses, redevelopment of the Latrobe building into a boutique hotel, City House Charles redevelopment into 37,000 sf of offices and retail and the redevelopment of Penn Station.

HIGHLIGHTS

- > Luxurious Residence / offices
- > Secure property with Backup Generator
- > 5 on-site parking spaces
- > Available for immediate occupancy
- > Hydraulic elevator services all floors
- > Owner Financing Available

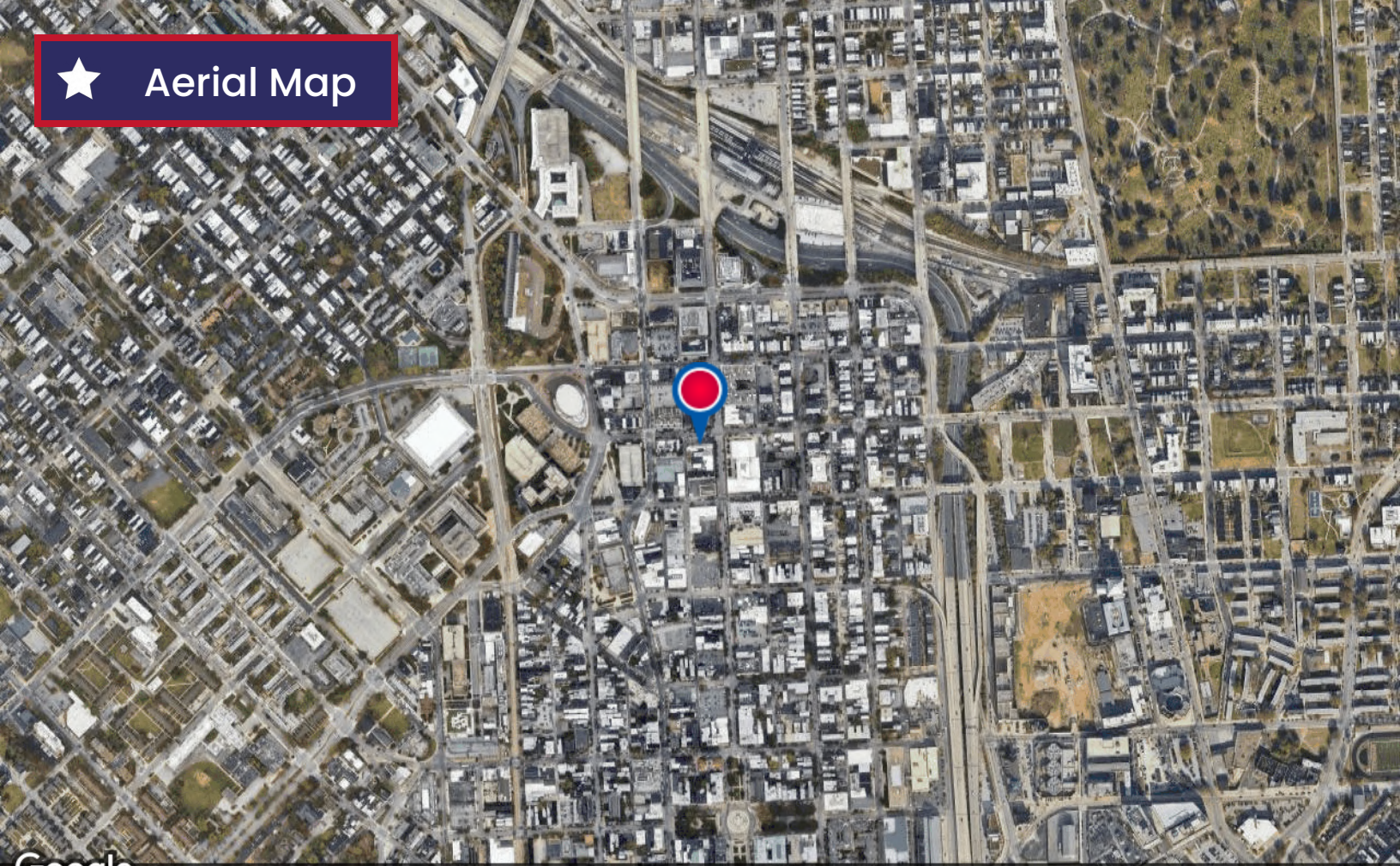
★ Floor Plans and Dimensions



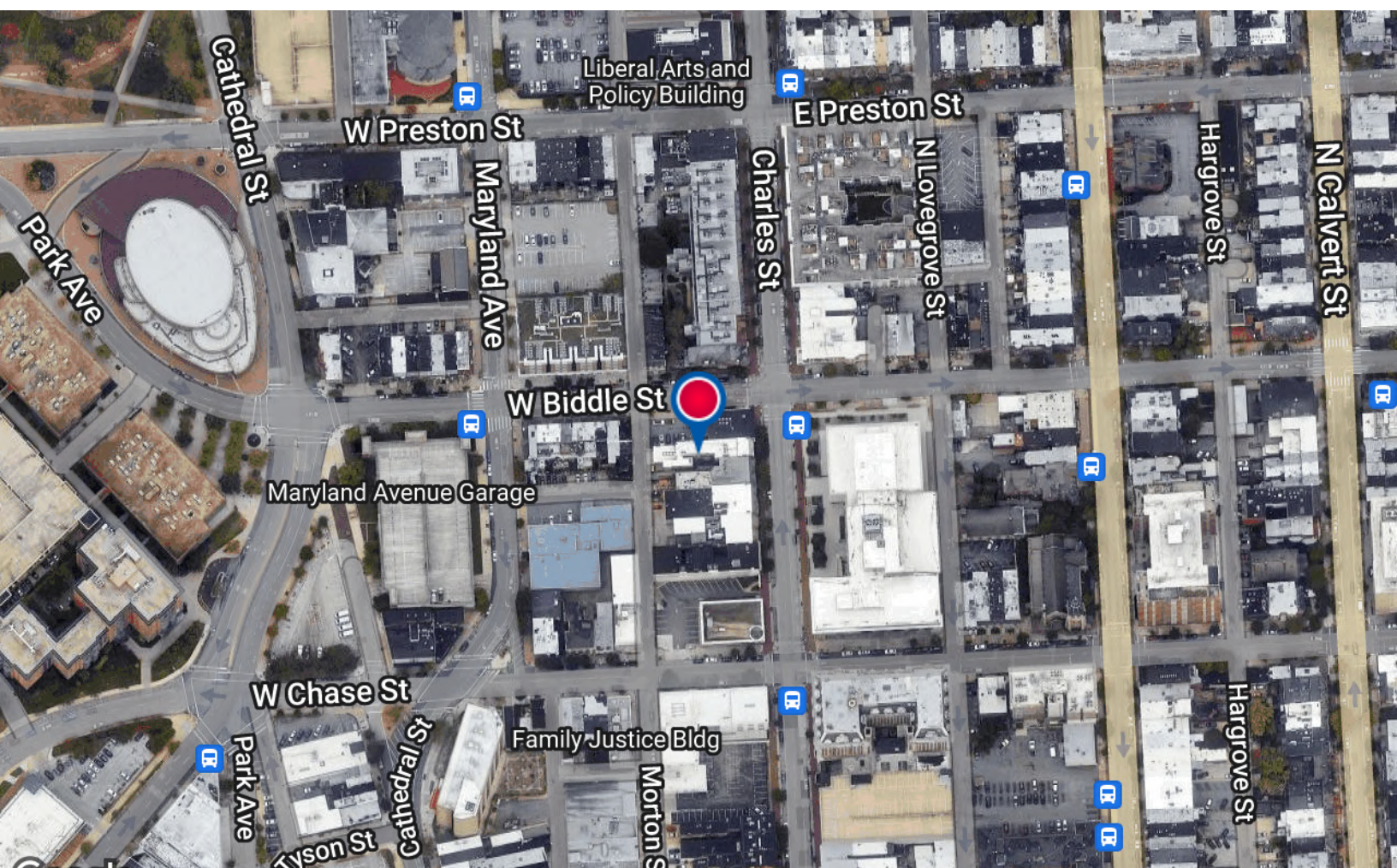
Lower Level:	3,123 sf
1 st Floor:	3,165 sf
2 nd Floor:	3,123 sf
3 rd Floor:	2,417 sf
Attic:	402 sf
Total Finished Area:	12,230 sf
Garage:	<u>825 sf (3 covered parking spaces)</u>
Total Gross Area:	15,380 sf (8 bedrooms & 7.5 baths)

ARCHITECT: H2 DESIGN (FORMERLY HEATH DESIGN GROUP, INC.)
 STRUCTURAL ENGINEER: MINCIN PATEL MILANO, INC.
 MECHANICAL ENGINEER: FIDELITY ENGINEERING CORPORATION

★ Aerial Map



Google ©2025, CNES / Airbus, Commonwealth of Virginia, Maxar Technologies, Sanborn, U.S. Geological Survey, USDA/FPAC/Geo



Google ©2025, CNES / Airbus, Commonwealth of Virginia, Maxar Technologies, Sanborn, U.S. Geological Survey, USDA/FPAC/Geo

★ Interior Photos





Leo McDermott

Senior Associate

 202.744.6910

 lmcdermott@troutdaniel.com

Contact Us



30 E. Padonia Road, Suite 504

Timonium, MD 21093



Visit Us

troutdaniel.com



Call Us

410.435.4004

The information contained in this marketing brochure has been obtained from sources we believe to be reliable; however, Trout Daniel & Associates LLC has not verified, and will not verify any of the information contained herein, nor has Trout Daniel & Associates LLC conducted any investigation regarding these matters and makes no warranty or representation whatsoever regarding the accuracy or completeness of the information provided. An agent indicated by an asterisk (*) has a direct or indirect ownership interest in this property.