



CANTON / TOWNSHIP  
ALFRED AND PLANTAGENET

# Alfred and Plantagenet WHY INVEST HERE?

Grow your business in Alfred and Plantagenet — a community on the rise with prime location, strong demographics, and room to expand. Invest smart, invest local. Alfred and Plantagenet, come grow with us!

- ☑ New Industrial Park
- ☑ Several residential projects underway
- ☑ Direct access to Highway 17
- ☑ Strategic location in the Ottawa-Montreal corridor







# WELCOME TO THE TOWNSHIP OF ALFRED AND PLANTAGENET

The Township of Alfred and Plantagenet, located in the United Counties of Prescott and Russell between Ottawa and Montreal, combines rural charm, bilingual character, and welcoming communities : Alfred, Curran, Lefaivre, Pendleton, Plantagenet, Treadwell, and Wendover.

Its strategic position along Highway 17 (East-West), with access to County Road 9 (North-South) and proximity to Ottawa and Montreal, strengthens commercial and industrial potential. The South Nation and Ottawa Rivers further enhance both natural appeal and quality of life.

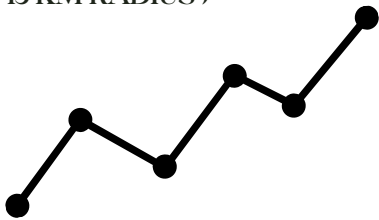
The cost of living —especially housing— remains significantly below urban markets, making the Township an increasingly attractive choice for residents and investors seeking affordability.

To support future development, the Township has launched the Wendover Industrial Park, a 28.5-acre parcel of land, currently under development, located along Highway 17 (locally known as County Road 17). The land is divided into 20 lots of 0.86 to 1.31 acres and is zoned Light industrial-exception 5 (ML-5), which can accommodate a variety of businesses. Lots in the industrial park will be fully serviced with municipal water and sewer, as well as three-phase electricity, natural gas, and high-speed internet (fiber optics).

As expansion continues, Alfred and Plantagenet remains committed to welcoming new investment while preserving an exceptional quality of life.

POPULATION (15 KM RADIUS)  
2021::

37,500



2031:  
41,430

9,949

ALFRED AND PLANTAGENET  
POPULATION

+ \$ 123,400

AVERAGE TOTAL INCOME OF  
TWO-OR-MORE-PERSON  
HOUSEHOLDS

546

NEW RESIDENTIAL  
UNITS SINCE 2015

1,394

PROJECTED RESIDENTIAL  
UNITS IN THE NEXT YEARS

829

VEHICULE TRAFFIC COUNT  
AT WENDOVER  
INTERSECTION PER PEAK  
HOUR

5.2%

UNEMPLOYMENT RATE

0.01967066

NEW BUILD INDUSTRIAL  
TAX RATE

0.01158425

NEW BUILD COMMERCIAL  
TAX RATE

3.99%

RESIDENTIAL TAX RATE



# WENDOVER INDUSTRIAL PARK

## HIGHWAY ACCESS

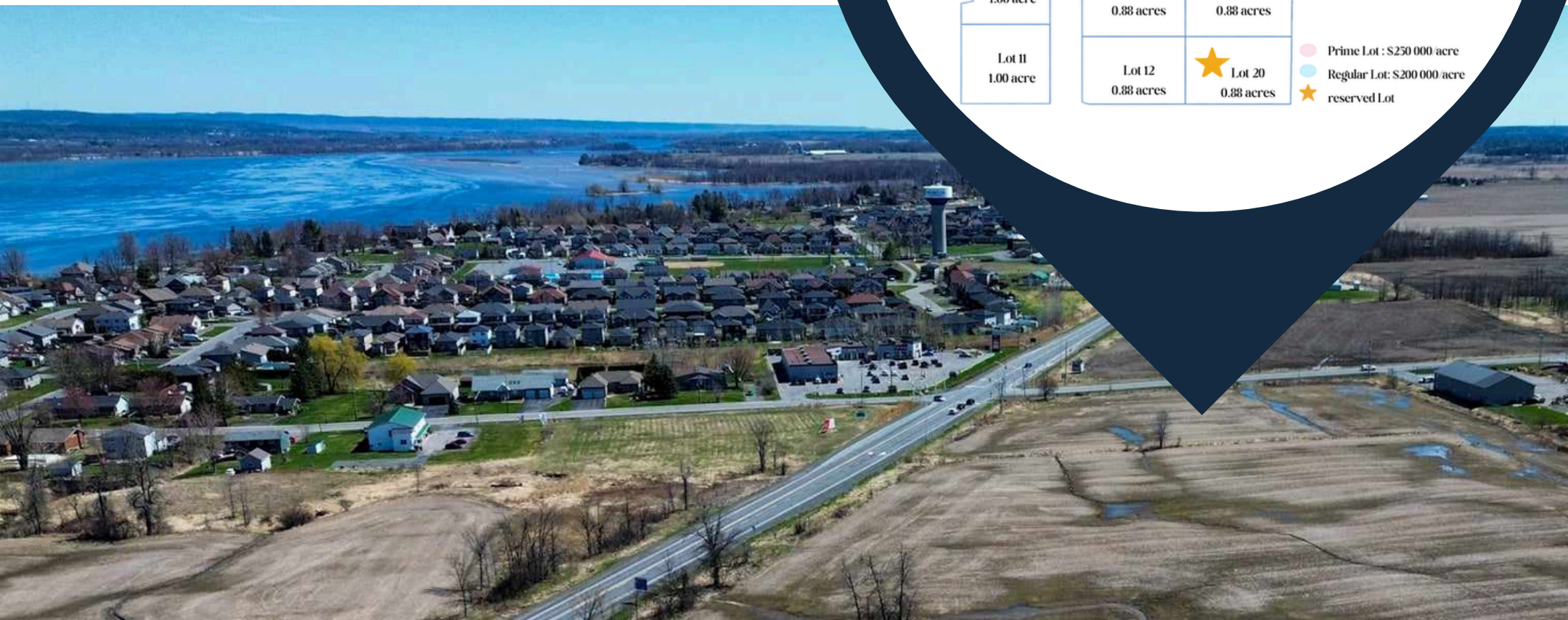
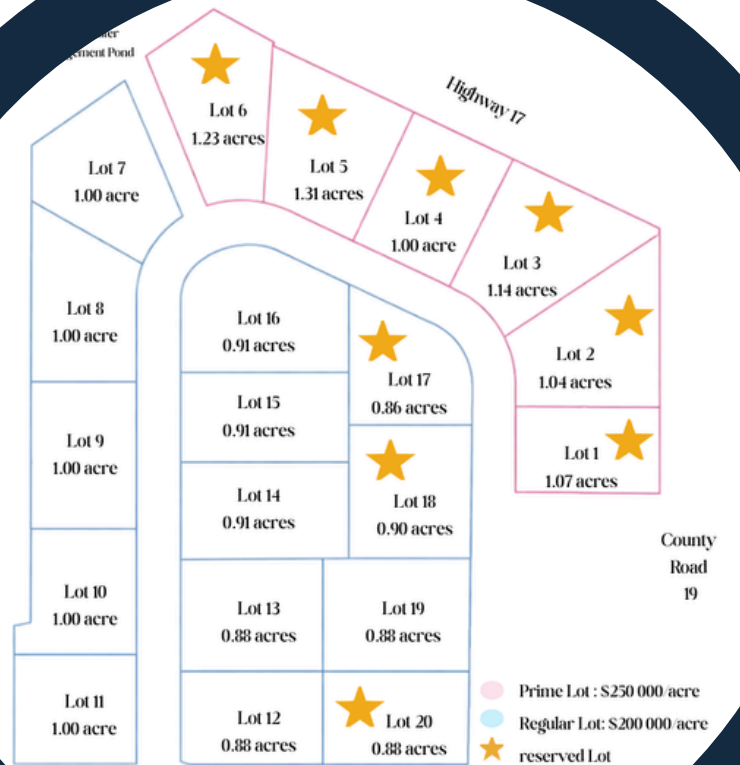
- Highway 17 (1 minute)
- Highway 417 (30 minutes)
- Highway 401 (60 minutes)

## KEY DISTANCES

- Ottawa (52 km)
- Montreal (140 km)
- Kingston (220 km)
- Toronto (450 km)
- Buffalo (595 km)

## INTERNATIONAL AIRPORTS

- Ottawa Macdonald-Cartier Airport  
45 minutes
- Montréal Pierre Elliott Trudeau Airport  
80 minutes





# STRATEGIC ADVANTAGES OF INVESTING IN ALFRED AND PLANTAGENET

- ✓ Low cost of living, especially housing
- ✓ Direct access to Highway 17
- ✓ Among the lowest municipal tax rates in Eastern Ontario
- ✓ High quality of life for its natural assets.
- ✓ Strong growth potential
- ✓ Bilingual, skilled labour force
- ✓ 45 minutes to downtown Ottawa
- ✓ 80 minutes to downtown Montreal



[www.alfred-plantagenet.com](http://www.alfred-plantagenet.com)



613-673-4797

## CONTACT US

**Emélie Viau -**  
Economic Development Officer

✉ [eviau@alfred-plantagenet.com](mailto:eviau@alfred-plantagenet.com)