

# 1475 Folsom St San Francisco, CA

**Exposed Brick Sublease**

**Restaurant Caliber Bar & Lounge In-Suite**

**3,500 ± RSF**

 **CALCO**  
COMMERCIAL, INC.

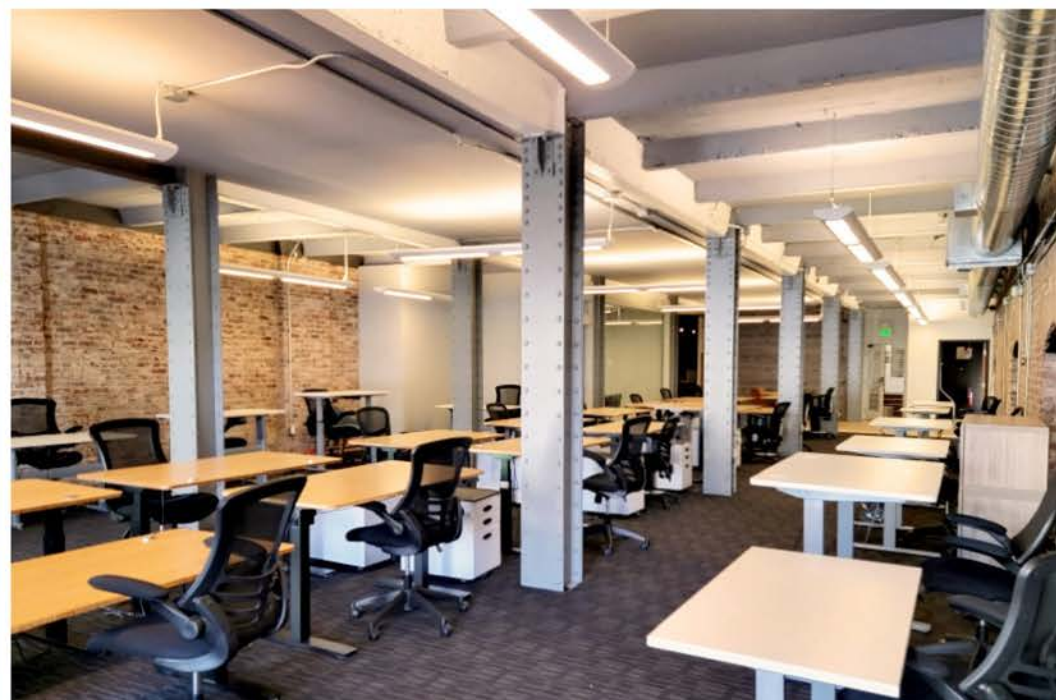
# Space Features:

- Creative Brick & Timber Interior
- Two (2) Glass Meeting Rooms
- Two (2) Glass Conference Rooms
- Two (2) Private Restrooms in Suite w/ Shower
- Two (2) Phone Booths
- Open Kitchen Area
- Full HVAC
- Hardwood Floors
- Lounge with a Built-in Bar
- High-end Finishes

Charlie Cutler, Partner  
415.850.4935  
charlie@calcosf.com  
LIC# 02026787

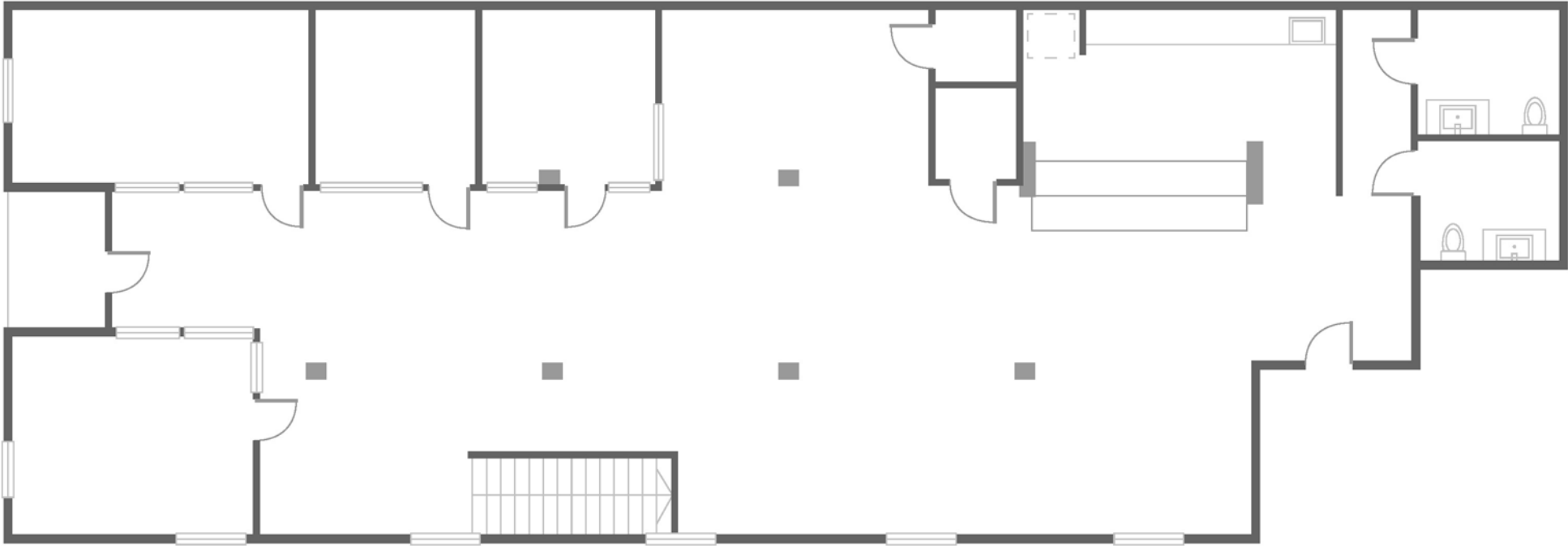
Calco Commercial  
415.970.0000  
info@calcosf.com  
www.calcosf.com





# 1475 Folsom Street

## Floorplan



# 1475 Folsom Street

## Amenities



### Amenities

- |                       |                          |                      |                    |                        |
|-----------------------|--------------------------|----------------------|--------------------|------------------------|
| 1 Connecticut Yankee  | 7 Starbucks              | 13 Parker Potrero    | 19 Smashburger     | 25 Tartine Manufactory |
| 2 Zesty               | 8 Sunflower Restaurant   | 14 Wolfie's Lunch    | 20 McDonald's      | 26 Universal Cafe      |
| 3 Philz Coffee        | 9 Chatz Roasting Company | 15 Dos Pinas         | 21 Safeway         | 27 The Ramp            |
| 4 Anchor Public Taps  | 10 Mochica               | 16 Starbucks         | 22 Sports Basement | 28 Moshi Moshi         |
| 5 Boba Guys Potrero   | 11 Umi                   | 17 Whole Food Market | 23 Best Buy        | 29 UCSF Medical Center |
| 6 Truly Mediterranean | 12 Plow                  | 18 Live Sushi Bar    | 24 Foods Co.       | 30 Kaiser Permanente   |