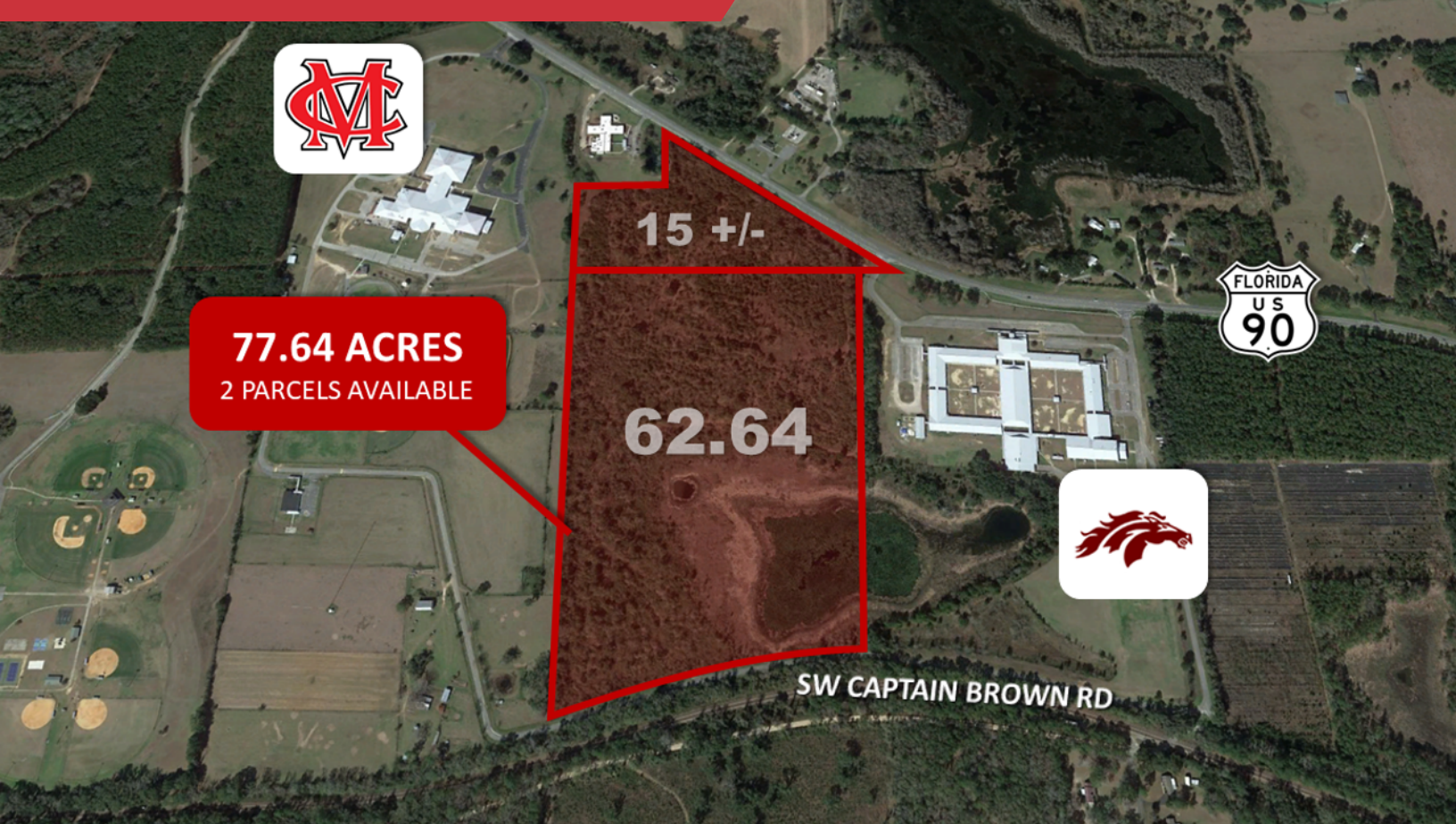


# FOR SALE

West US Hwy 90 Madison, FL 32340



## Land | 77.64 Acres

- Zoned R-1 for residential development allowing for half acre lots
- Over 1300 feet of Frontage on US Hwy 90
- Located between Madison County Highschool and Madison County Central School
- 15+/- acre parcel (17-1N-09-3577-000-000) can be rezoned commercial
- The two parcels can be sold individually
- City water and sewer

**Sale Price: \$945,000**



✉ **Billy Rhodes**  
+1 850 545 9779  
brhodes@talcor.com

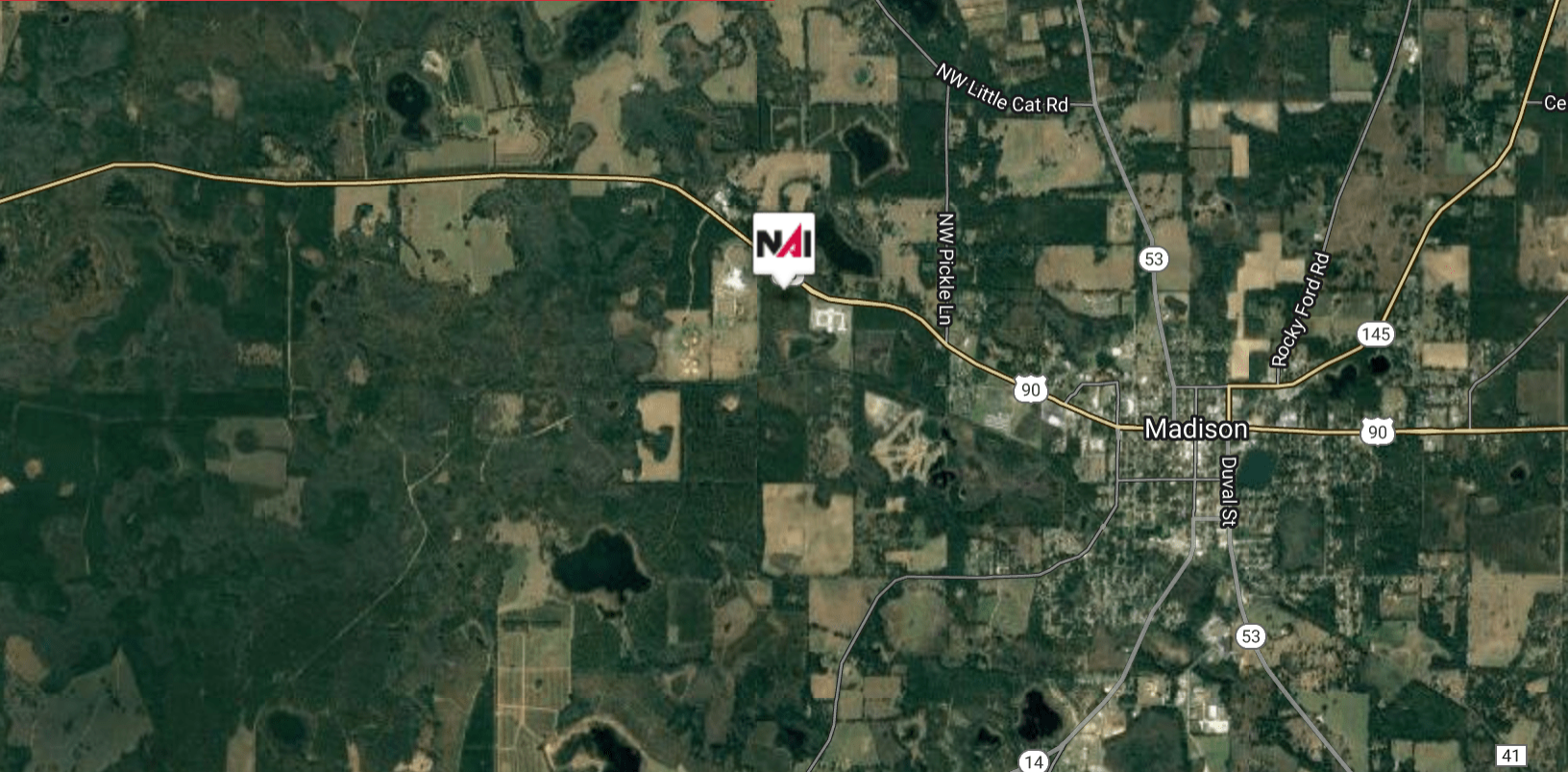
No Warranty Of Representation, Express Or Implied, Is Made As To The Accuracy Of The Information Contained Herein, And The Same Is Submitted Subject To Errors, Omissions, Change Of Price, Rental Or Other Conditions, Prior Sale, Lease Or Financing, Or Withdrawal Without Notice, And Of Any Special Listing Conditions Imposed By Our Principals No Warranties Or Representations Are Made As To The Condition Of The Property Or Any Hazards Contained Therein Are Any To Be Implied.

**NAI TALCOR**  
1018 Thomasville Road, Suite 200A  
talcor.com



# FOR SALE

West US Hwy 90 Madison, FL 32340



Map data ©2023 Imagery ©2023, CNES / Airbus, Landsat / Copernicus, Maxar Technologies, U.S. Geological Survey, USDA/FPAC/GEO

Google



Map data ©2023 Google

Google

✉ **Billy Rhodes**  
+1 850 545 9779  
brhodes@talcor.com

No Warranty Or Representation, Express Or Implied, Is Made As To The Accuracy Of The Information Contained Herein, And The Same Is Submitted Subject To Errors, Omissions, Change Of Price, Rental Or Other Conditions, Prior Sale, Lease Or Financing, Or Withdrawal Without Notice. And Of Any Special Listing Conditions Imposed By Our Principals No Warranties Or Representations Are Made As To The Condition Of The Property Or Any Hazards Contained Therein Are Any To Be Implied.

**NAITALCOR**