

KAIROS

CREATIVE

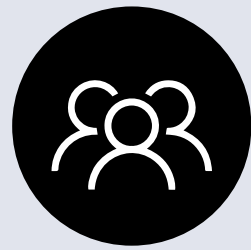
BEAUTIFUL

AFFORDABLE

THOUGHTFUL

COMMUNITIES

Hyde Park Statistics



Population

5,916

Growth Since 2020

12.64% (664)

The last official US Census in 2020 recorded the population at 5,252.



Average Household Income

\$93,306



Average Age

27.8

Hyde Park Real Estate Statistics

Average Home Value

\$625,000

(Zillow, Realtor Redfin)

Average Age Of Existing Home

27

Average Monthly Payment for New Home

Monthly Payment Breakdown

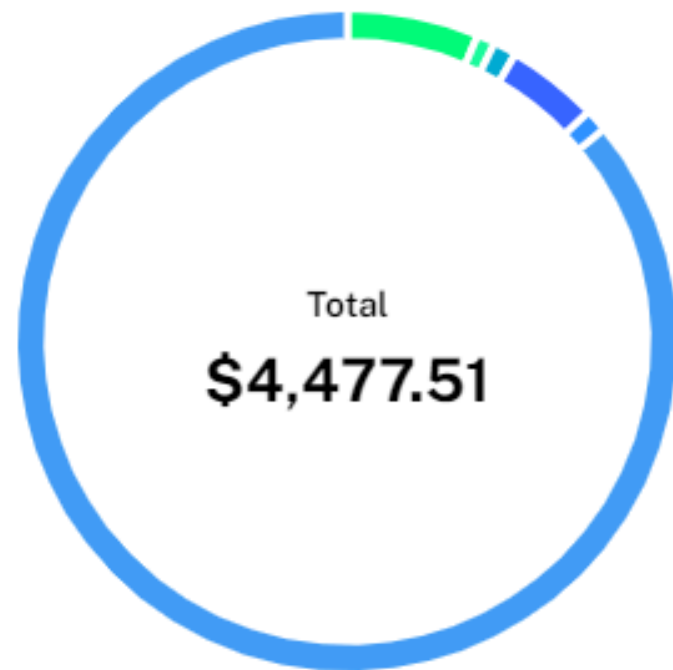


● Taxes ● Insurance ● HOA ● Utilities ● PMI ● Principal & Interest

Hyde Park Real Estate Statistics

Average Monthly Payment for New Home

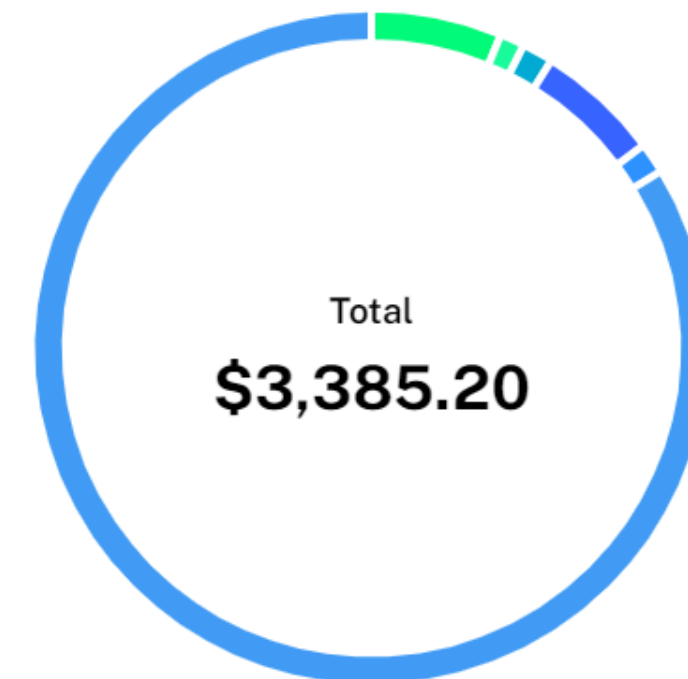
Monthly Payment Breakdown



● Taxes ● Insurance ● HOA ● Utilities ● PMI ● Principal & Interest

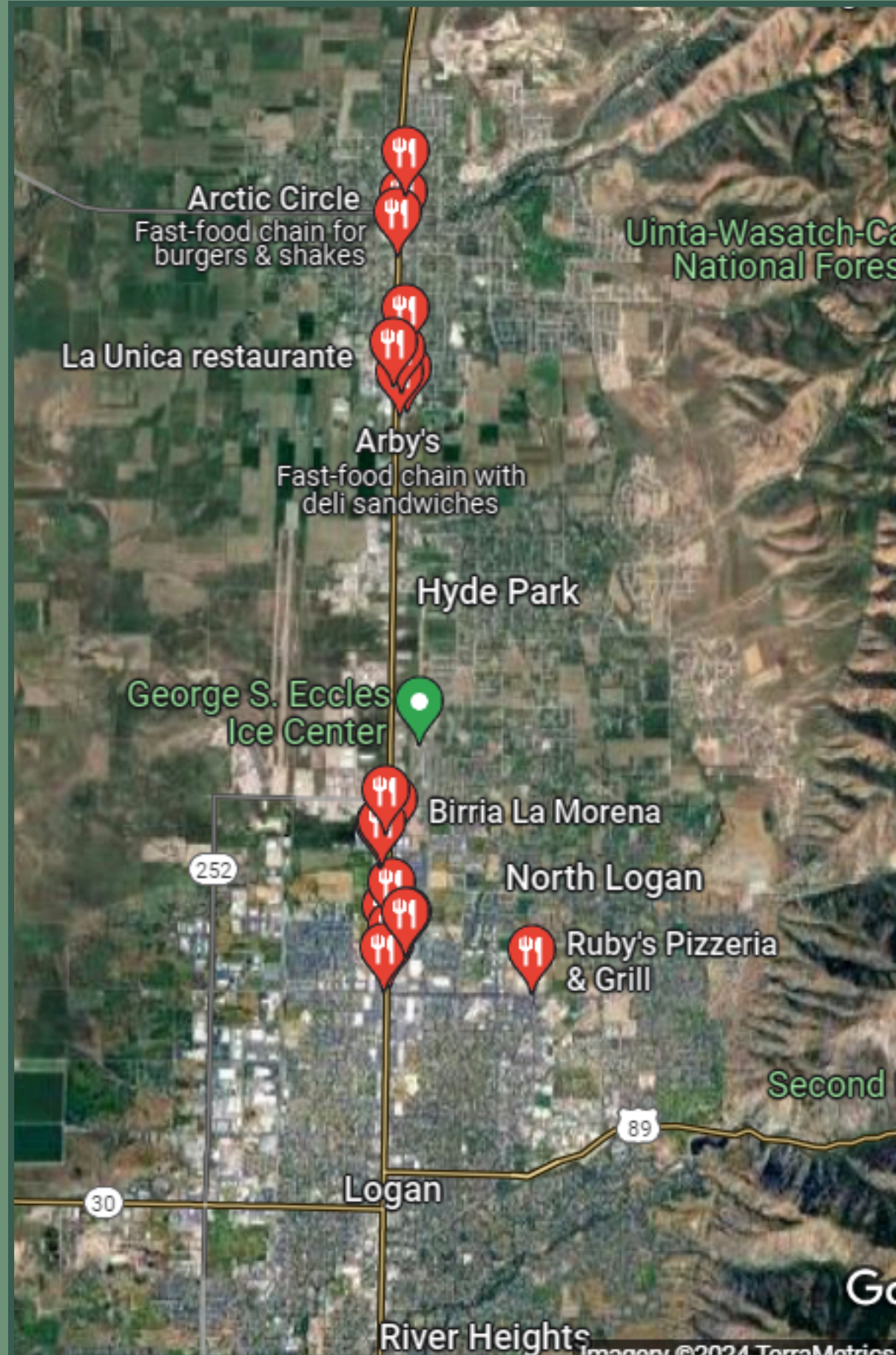
What the Average Resident Can Afford

Monthly Payment Breakdown

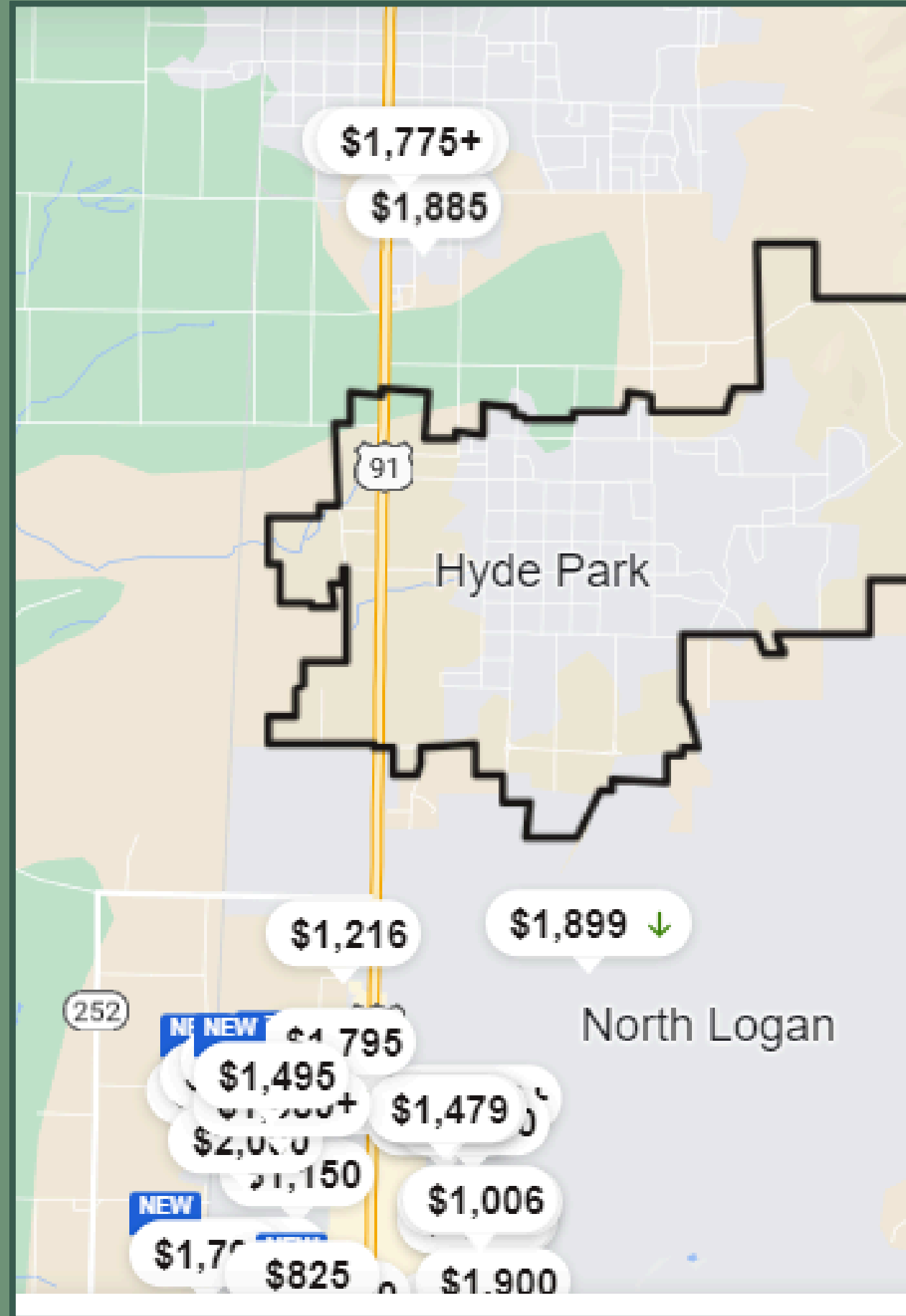


● Taxes ● Insurance ● HOA ● Utilities ● PMI ● Principal & Interest

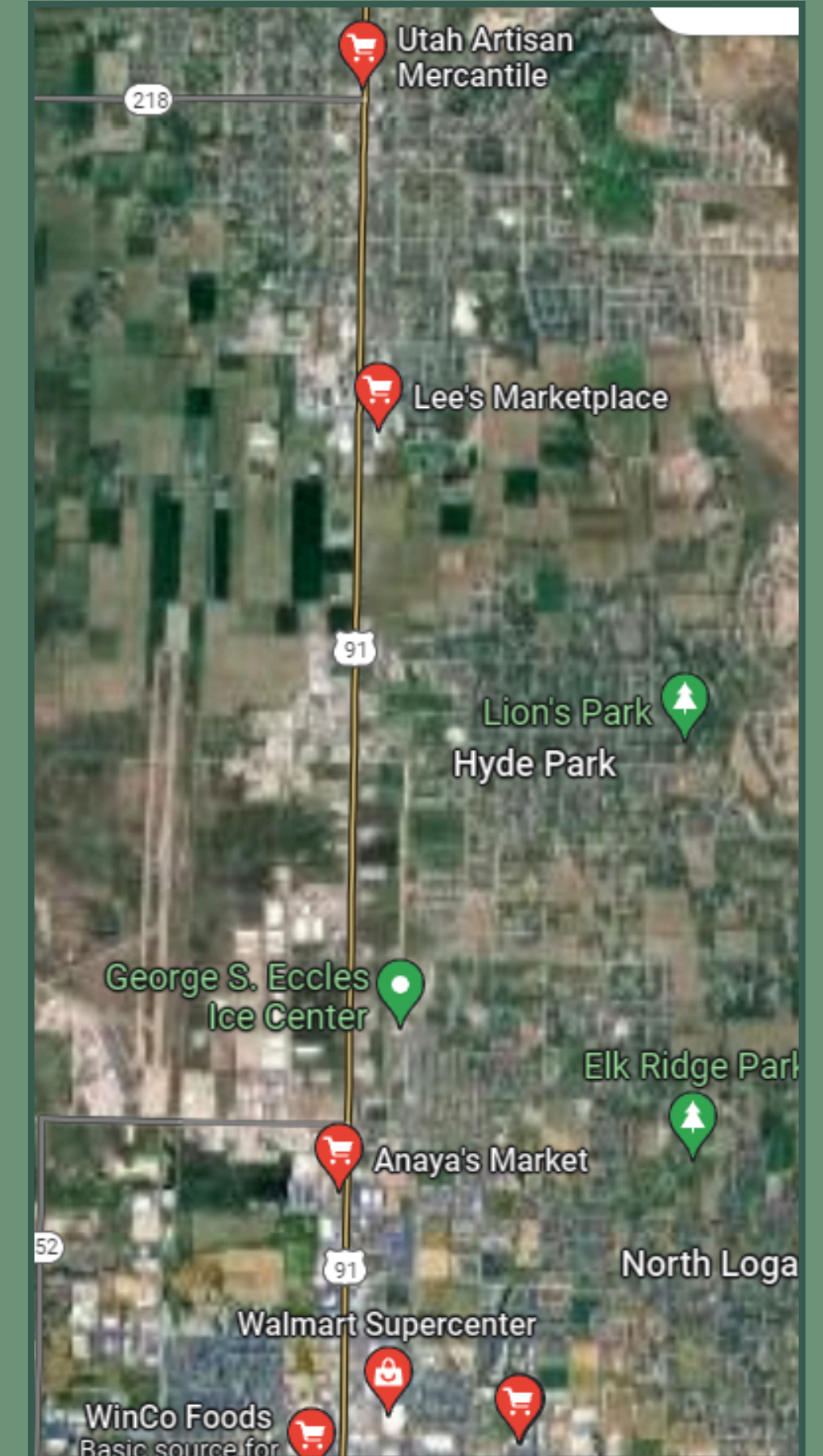
Restaurants In Area



Apartments For Rent



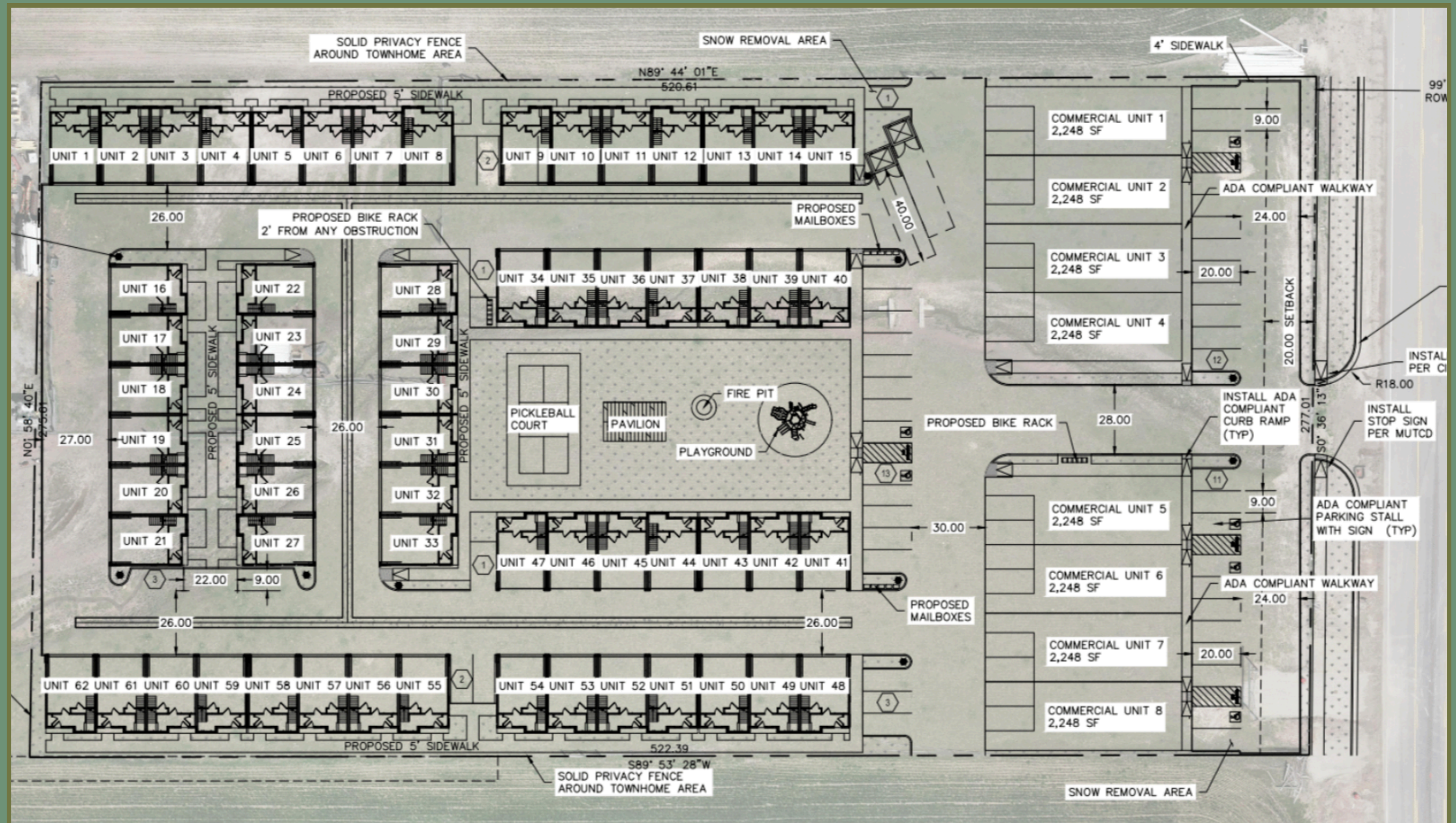
Grocery Stores



The **ARIA** at Hyde Park



SITE PLAN



SITE PLAN





The **ARIA**
at Hyde Park



Commercial + Condo Units



Townhome Units



AFFORDABLE

CREATIVE

Additional Renderings



AFFORDABLE

CREATIVE

Additional Renderings

