

FOR LEASE

3,032-6,413 SF | \$3.25-\$3.75/SF/MO. NNN

Class A Office/Medical Development in NorthWest Crossing

2219 NW Labiche Lane, Bend, OR 97703



PROPERTY DETAILS

Avail. Space:	Suite A - 3,032 SF Suite B - 3,381 SF Suites A&B - 6,413 SF
Lease Rate:	\$3.25-\$3.75/SF/Mo. NNN
NNNs:	Est. at \$0.90/SF/Mo.
Zoning:	Commercial Limited (CL)
Date Avail.:	Summer 2025

HIGHLIGHTS

- Class A office/medical building on Bend's west side
- Great location near NorthWest Crossing shops & restaurants
- Signage available on interior and exterior of building
- 22 onsite parking spaces plus street parking
- NorthWest Crossing is home to more than 1,550 housing units stretching over 486 acres

Bruce Churchill, Principal Broker
Jay Lyons, SIOR, CCIM | Grant Schultz, CCIM

600 SW Columbia St., Ste. 6100 | Bend, OR 97702
541.383.2444 | www.CompassCommercial.com

COMPASS
COMMERCIAL

REAL ESTATE SERVICES

FOR LEASE

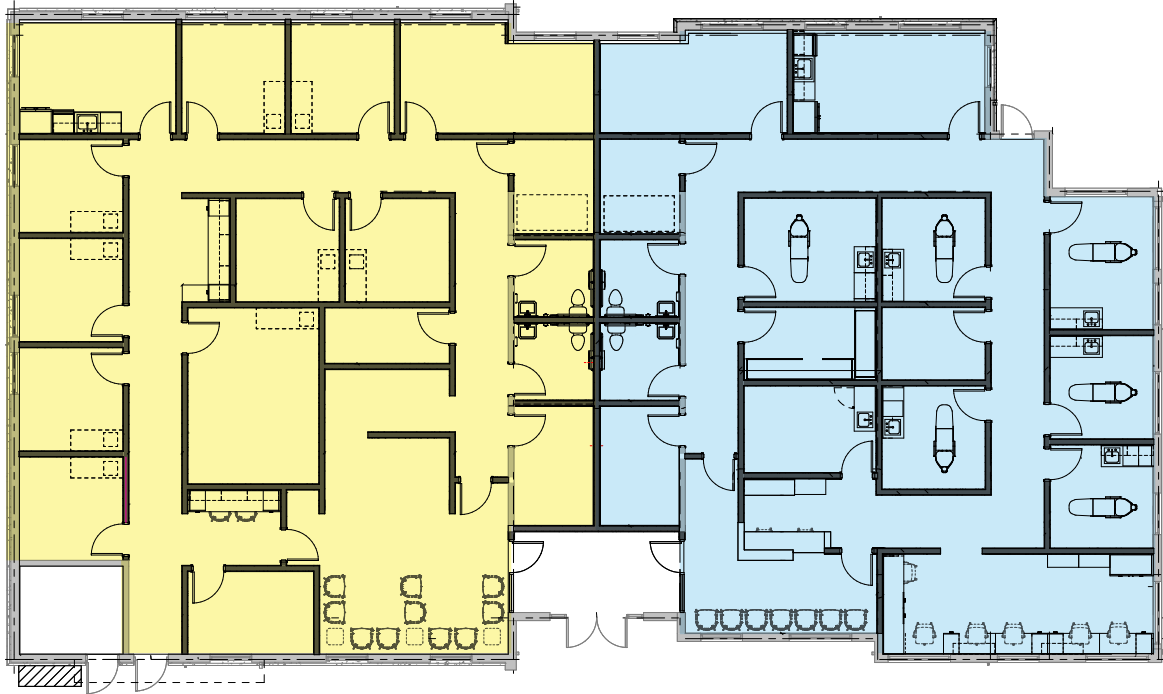
3,032-6,413 SF | \$3.25-\$3.75/SF/MO. NNN

Class A Office/Medical Development in NorthWest Crossing

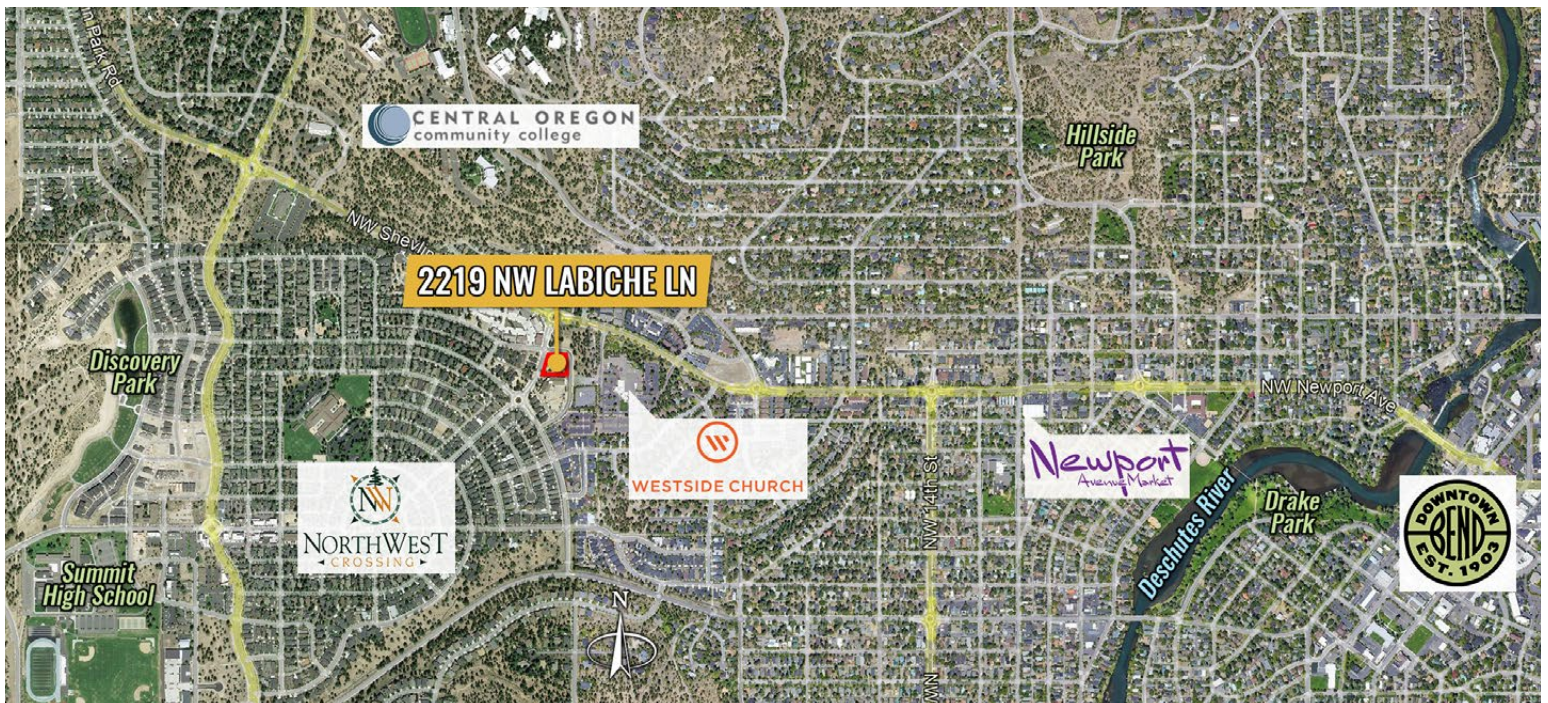
2219 NW Labiche Lane, Bend, OR 97703

CONCEPTUAL FLOOR PLAN

SUITE B
3,381 SF



SUITE A
3,032 SF



Brokers are licensed in the state of Oregon. This information has been furnished from sources we deem reliable, but for which we assume no liability. This is an exclusive listing. The information contained herein is given in confidence with the understanding that all negotiations pertaining to this property be handled through Compass Commercial Real Estate Services. All measurements are approximate.



Jay Lyons, SIOR, CCIM
Partner, Principal Broker
Cell 541.410.6519
jlyons@compasscommercial.com



Grant Schultz, CCIM
Broker
Cell 541.480.9873
gschultz@compasscommercial.com



Bruce Churchill
Principal Broker
Cell 541.280.7560
bchurchill@compasscommercial.com

COMPASS COMMERCIAL
REAL ESTATE SERVICES