

1016 East Pike Street

For Lease | Office Space in the heart of Capitol Hill

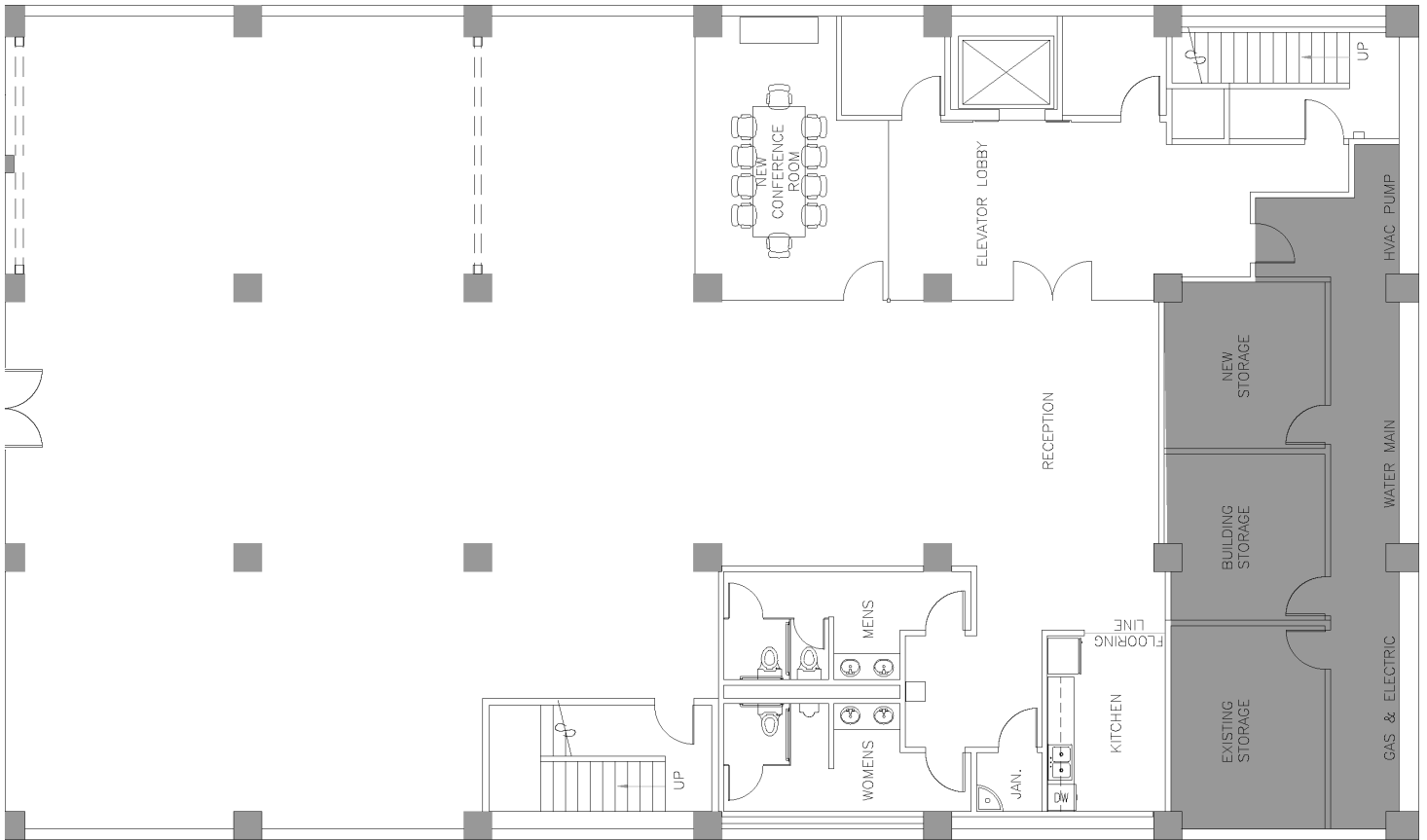


CBRE

Lower Level/Basement



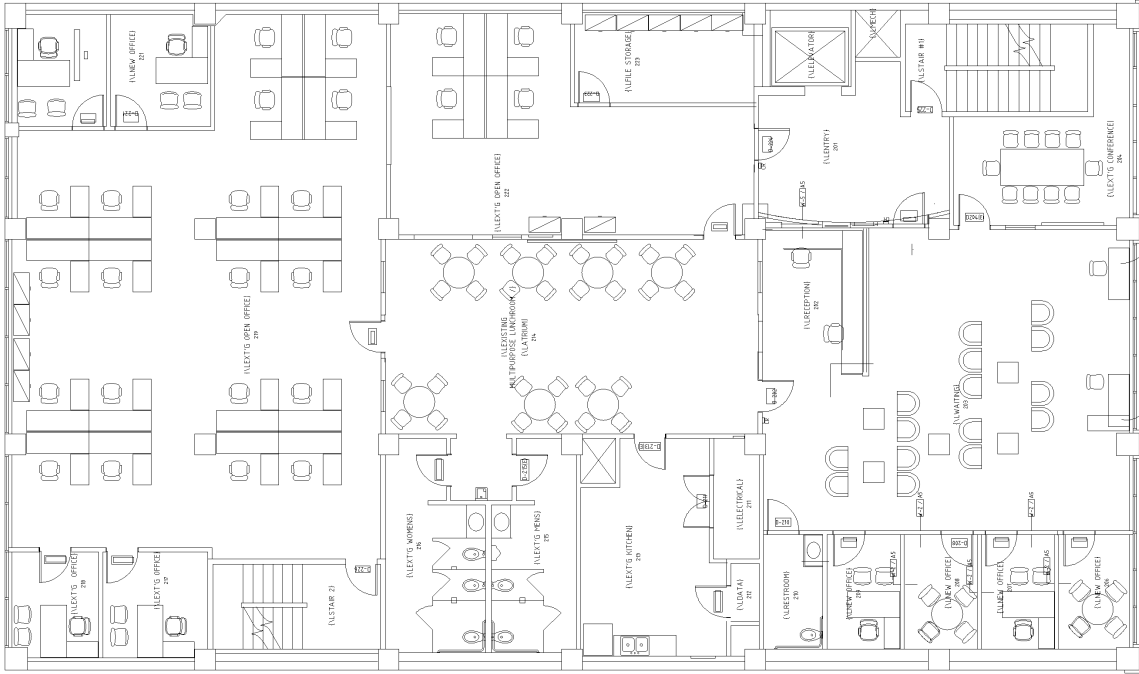
5,686 SF Office Space



- **NORTH FACING SUITE** provides a newly built out space with open modern design and modern finishes including restrooms and kitchen
- **NEWLY** remodeled entry lobby
- **GLASS** conference room
- **STATE-OF-THE-ART** lighting system that can be controlled wirelessly by your phone
- **PRIVATE** outdoor area accessed only through the suite
- **SECURE** building with access controlled elevator, street entrance and double glass entry door
- **NEW** multi-zone HVAC – with variable fresh air circulation
- **SOUND** insulation throughout

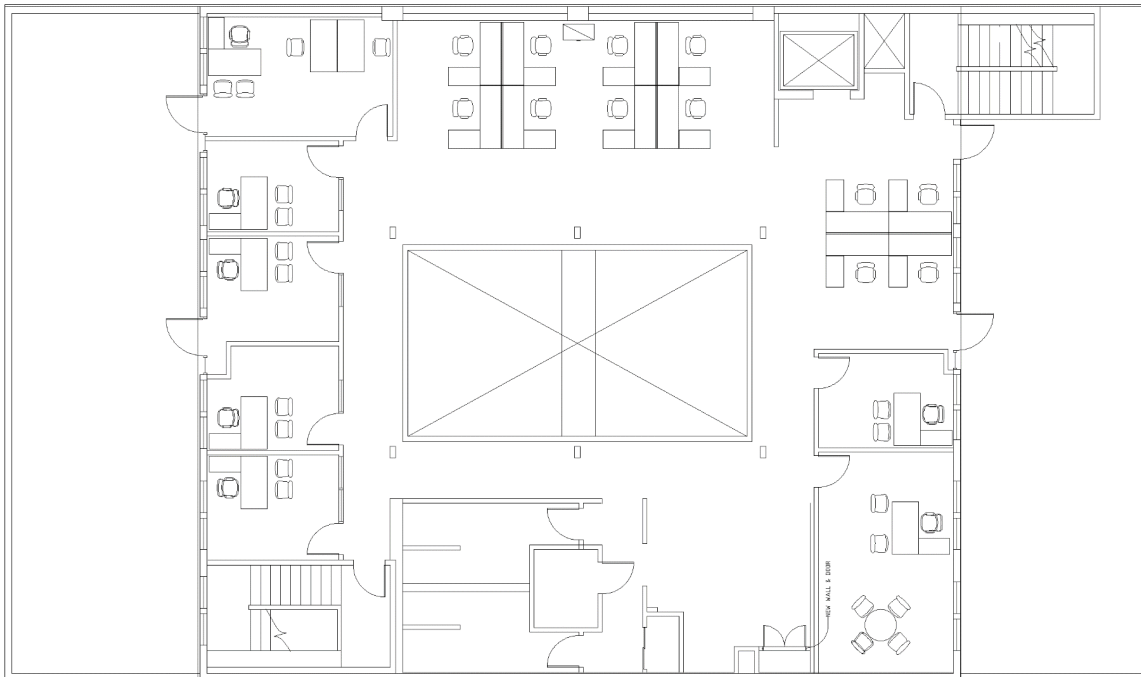
3rd Floor

6,810 SF Office Space



4th Floor

3,799 SF Office Space







Contact Us

JJ Shephard
Senior Vice President
+1 206 292 6032
jj.shephard@cbre.com

Riley Shephard
First Vice President
+1 425 462 6932
Riley.shephard@cbre.com

© 2023 CBRE, Inc. All rights reserved. This information has been obtained from sources believed reliable, but has not been verified for accuracy or completeness. You should conduct a careful, independent investigation of the property and verify all information. Any reliance on this information is solely at your own risk. CBRE and the CBRE logo are service marks of CBRE, Inc. All other marks displayed on this document are the property of their respective owners, and the use of such logos does not imply any affiliation with or endorsement of CBRE. Photos herein are the property of their respective owners. Use of these images without the express written consent of the owner is prohibited.