

# Coming Soon

## New Southwest Retail Development

# NEC Panama Lane & Gosford Road

Bakersfield, CA

### Property Highlights

- Located in Southwest Bakersfield, one of Bakersfield's fastest growing population centers
- High traffic flow along Panama Lane, a section line arterial
- Surrounding area has numerous new housing starts which will ensure a 360° trade area with medium to upper income households



Scott A. Underhill, CRX, SCLS ▪ Principal 661 706 9312 direct ▪ [scott@asuassociates.com](mailto:scott@asuassociates.com) ▪ CA RE #00785728  
Jeff Leggio, CLS ▪ Principal ▪ 661 616 3565 direct ▪ [jeff@asuassociates.com](mailto:jeff@asuassociates.com) ▪ CA RE #01704552  
Jonathon Ortiz ▪ Associate ▪ 661 885 6948 direct ▪ [jonathon@asuassociates.com](mailto:jonathon@asuassociates.com) ▪ CA RE #02069258  
11601 Bolthouse Drive Suite 110 ▪ Bakersfield, CA 93311 ▪ 661 862 5454 main ▪ 661 862 5444 fax

Development By  
**Bolthouse**  
PROPERTIES, LLC



The information contained herein may have been obtained from sources other than ASU Commercial. We have not verified such information and make no guarantees, warranties or representations about such information. It is your responsibility to independently confirm its accuracy and completeness prior to purchasing/leasing the property.



# Silver Creek Retail Center Now Leasing

## Project Information | Site Plan

NEC Panama Lane & Gosford Road  
Bakersfield, CA

Development By

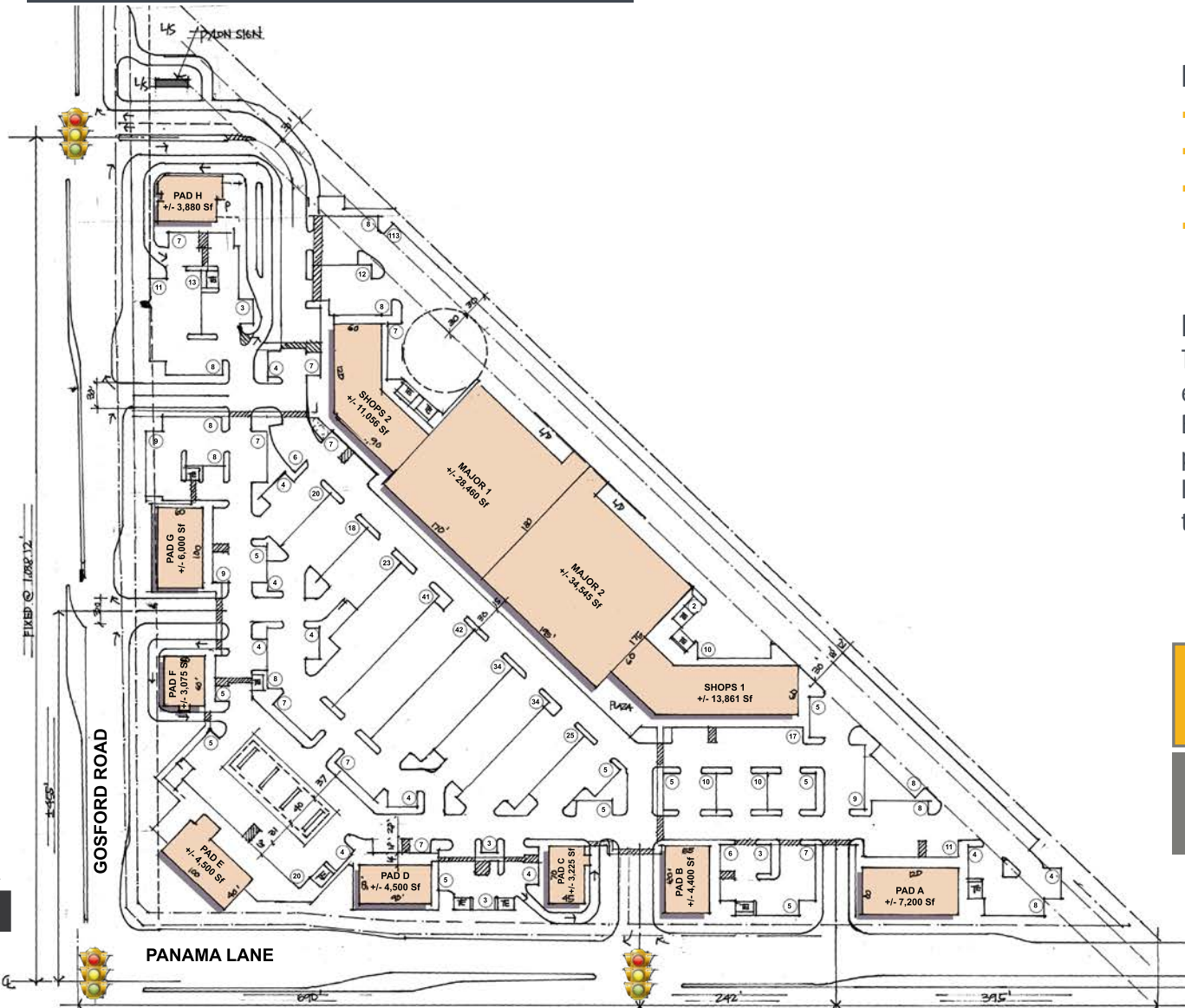
**Bolthouse**  
PROPERTIES, LLC

### Project Information

- **Total Site Area** 17.59± Acres (766,474± SF)
- **Building Area** 124,702 SF
- **Parking Provided** 742 Stalls
- **Zoning** C-2 Commercial,  
City of Bakersfield

### Property Information

The subject property is strategically located at the North-east corner of Panama Lane and Gosford Road in southwest Bakersfield. Many national retailers are located in close proximity to the site. Gosford Village and Gosford Village II are located across Gosford Road to the west/northwest of the site.



New  
Construction



Excellent  
Area  
Demographics



124,702 SF  
of Retail  
Space



742  
Standard  
Parking Stalls

Scott A. Underhill, CRX, SCLS ▪ Principal 661 706 9312 direct ▪ [scott@asuassociates.com](mailto:scott@asuassociates.com) ▪ CA RE #00785728  
Jeff Leggio, CLS ▪ Principal ▪ 661 616 3565 direct ▪ [jeff@asuassociates.com](mailto:jeff@asuassociates.com) ▪ CA RE #01704552  
Jonathon Ortiz ▪ Associate ▪ 661 885 6948 direct ▪ [jonathon@asuassociates.com](mailto:jonathon@asuassociates.com) ▪ CA RE #02069258



# Silver Creek Retail Center Now Leasing

## Property Aerial Photos

NEC Panama Lane & Gosford Road  
Bakersfield, CA

Development By  
*Bolthouse*  
PROPERTIES, LLC



North



South



East



West

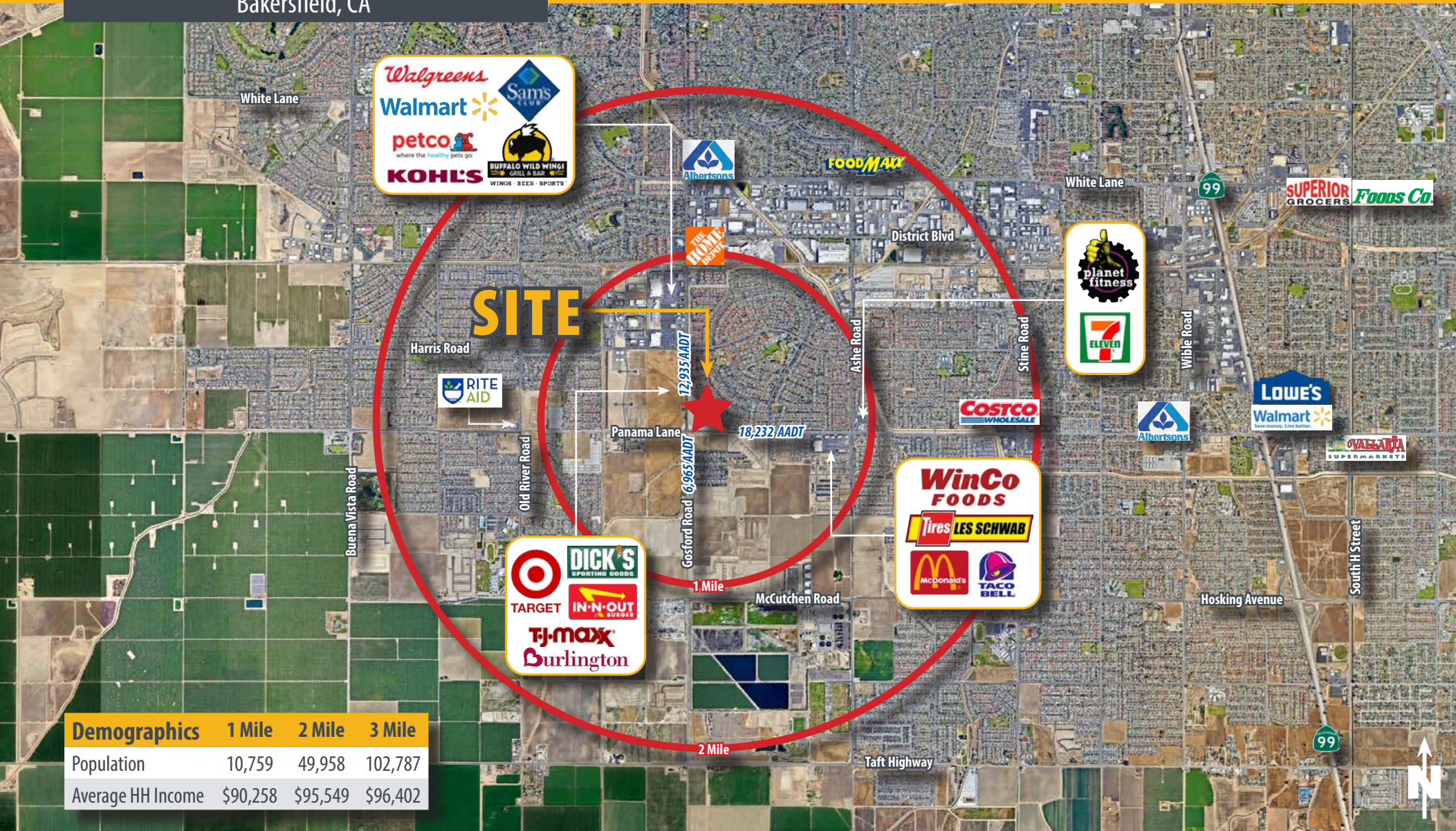


# Silver Creek Retail Center Now Leasing

## Demographic & Trade Area Aerial

NEC Panama Lane & Gosford Road  
Bakersfield, CA

Development By  
*Bolthouse*  
PROPERTIES, LLC





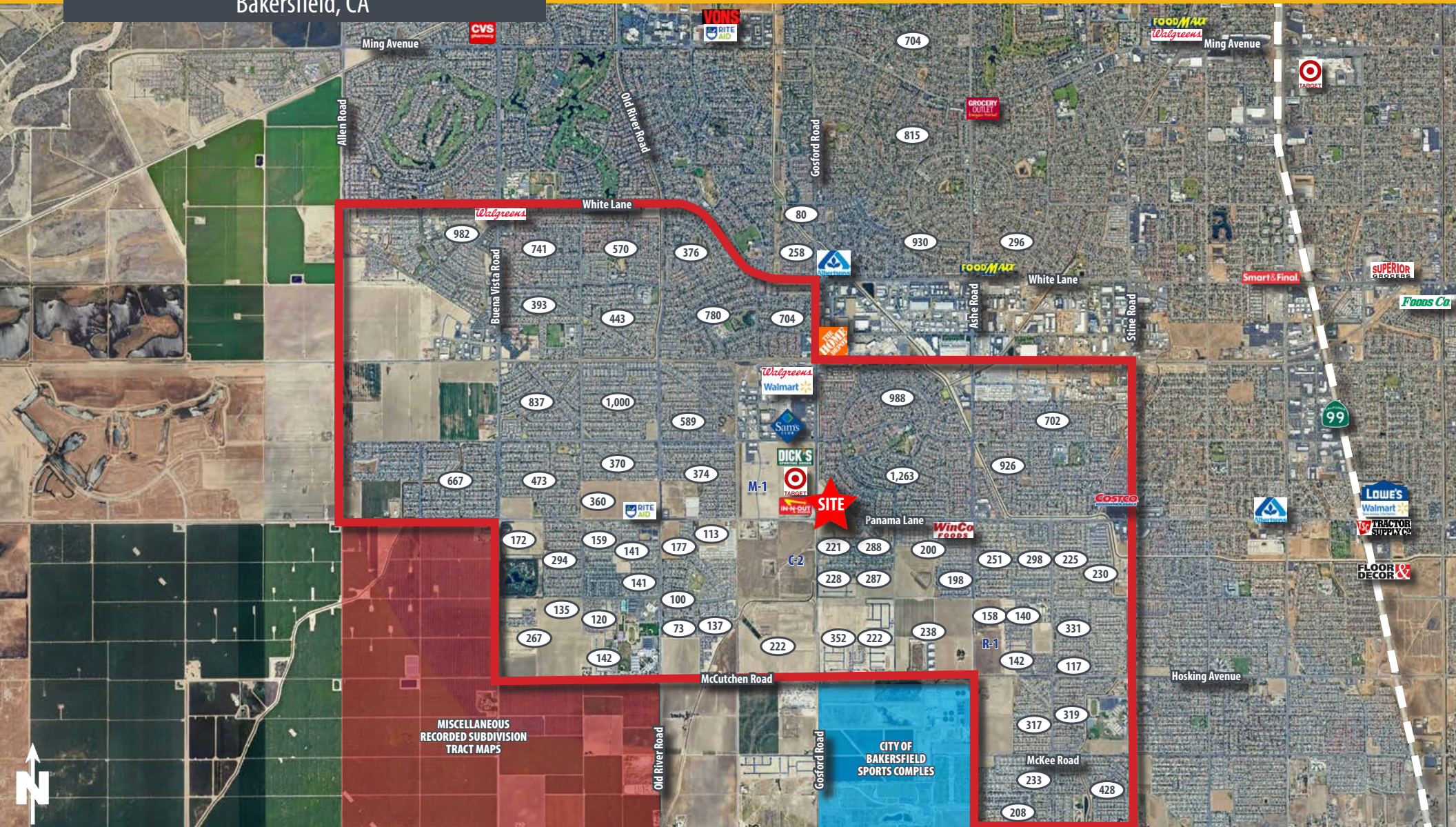
# Silver Creek Retail Center Now Leasing

## Southwest Rooftop Study

NEC Panama Lane & Gosford Road  
Bakersfield, CA

Development By

**Bolthouse**  
PROPERTIES, LLC





# Silver Creek Retail Center Now Leasing

## Area Tentative Tract Map Activity

NEC Panama Lane & Gosford Road  
Bakersfield, CA

Development By

**Bolthouse**  
PROPERTIES, LLC



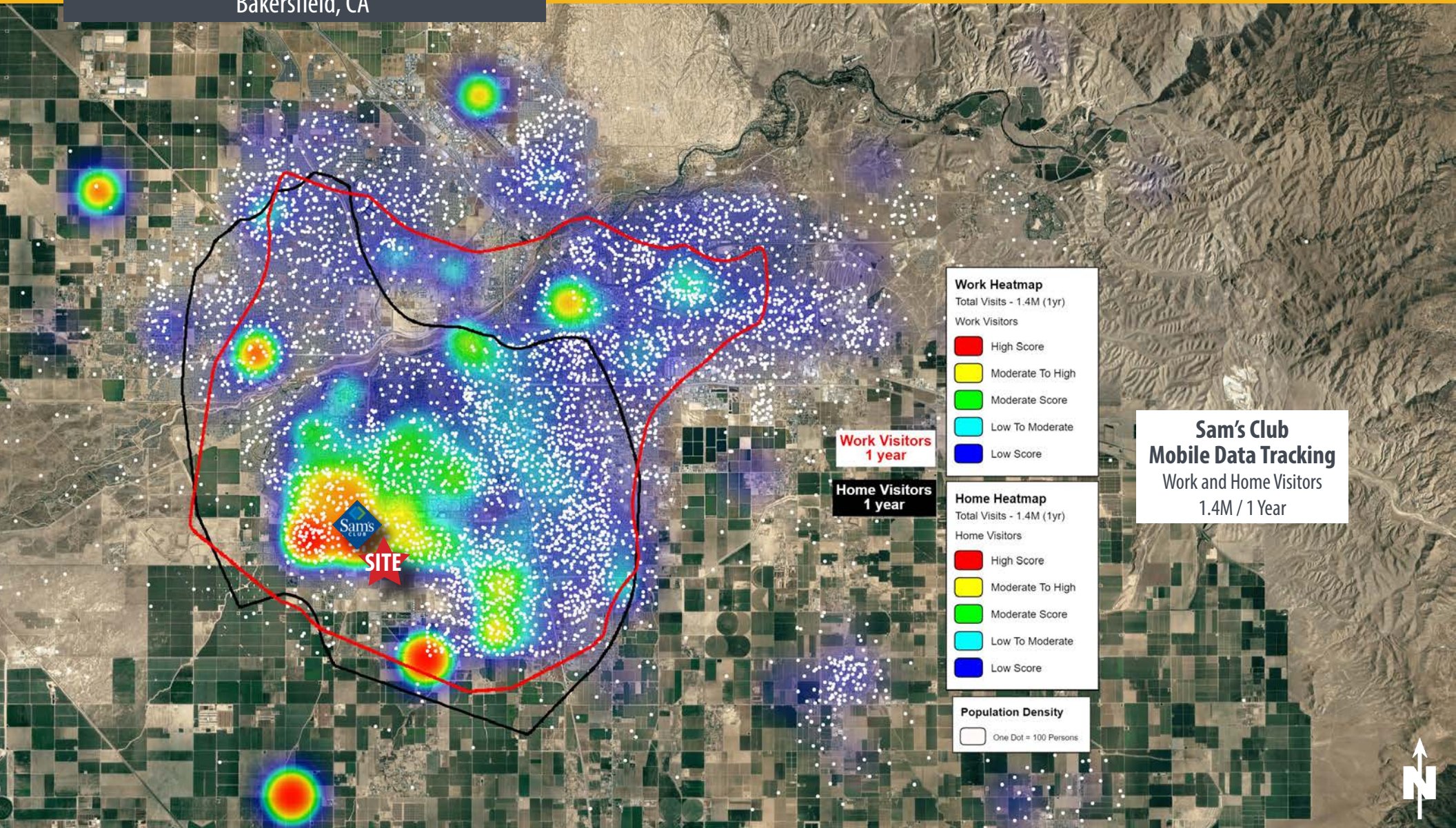


# Silver Creek Retail Center Now Leasing

## Neighborhood Mobile Store Visits

NEC Panama Lane & Gosford Road  
Bakersfield, CA

Development By  
**Bolthouse**  
PROPERTIES, LLC





# Silver Creek Retail Center Now Leasing

## Annual Grocery Sales Volumes

NEC Panama Lane & Gosford Road  
Bakersfield, CA

Development By

**Bolthouse**  
PROPERTIES, LLC



Store	Annual Sales Volume	Store Size SF
1 Vons	35.3 M	62,900
2 Albertsons	23.5 M	44,200
3 Walmart	127.1 M	236,300
4 Food Maxx	22.6 M	59,600
5 Winco	142.9 M	95,600
6 Grocery Outlet	6.4 M	18,700