



Unit 5  
2,216 SF

## 2ND GEN MEDICAL OFFICE | FOR LEASE

3810 Williamsburg Park Boulevard, Suite 5  
Jacksonville, FL 32257

KAYLA DEGUZMAN  
D - 904.302.6930  
M - 904.208.1168  
kayla@cantrellmorgan.com





# PROPERTY OVERVIEW

Grow in this spacious multi-tenant plaza in the vibrant community of Williamsburg Park in Jacksonville, Florida. Perfectly positioned just off the bustling San Jose Blvd, offering great visibility and easy access.

Enter into a beautiful lobby with large waiting area and then explore the multiple plumbed exam rooms and offices within.

## PROPERTY HIGHLIGHTS

- Second generation dental office
- 7 treatment rooms, 2 bathrooms, and a large lobby
- Ample parking
- Endcap unit

## LEASING SUMMARY

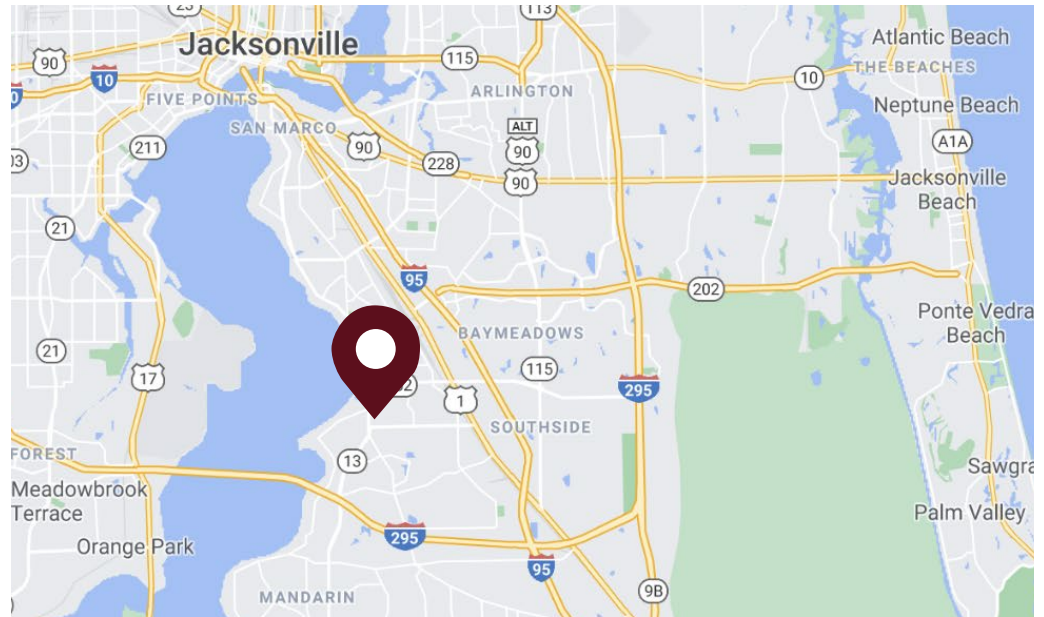
Address: 3810 Williamsburg Park Blvd  
Zoning: CO

## LEASE DETAILS

Suite	Size	Lease Price
Unit 5	2,216 SF	\$20/SF + \$5.00/SF NNN

## DEMOGRAPHICS

	3 MILES	5 MILES
Population	61,319	153,179
Households	26,090	65,157
Median Age	41.2	39.5
Median Household Income	\$66,638	\$68,523
Average Household Income	\$94,669	\$95,630

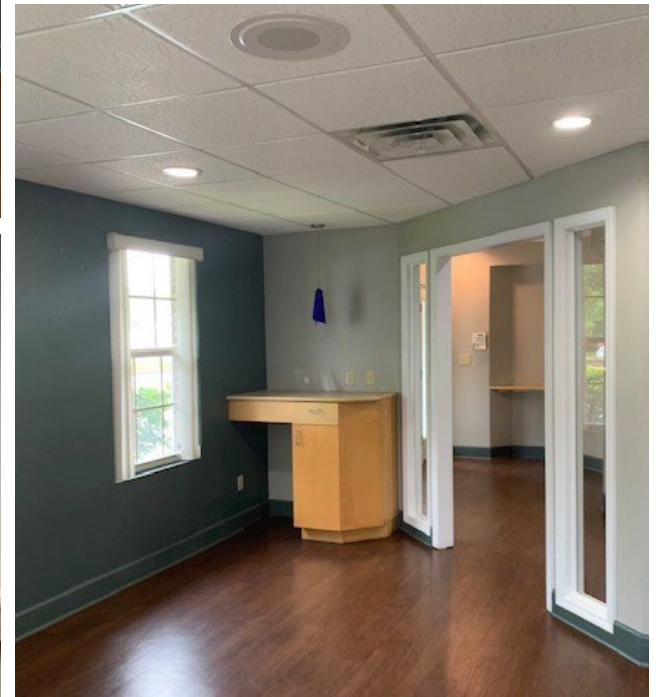
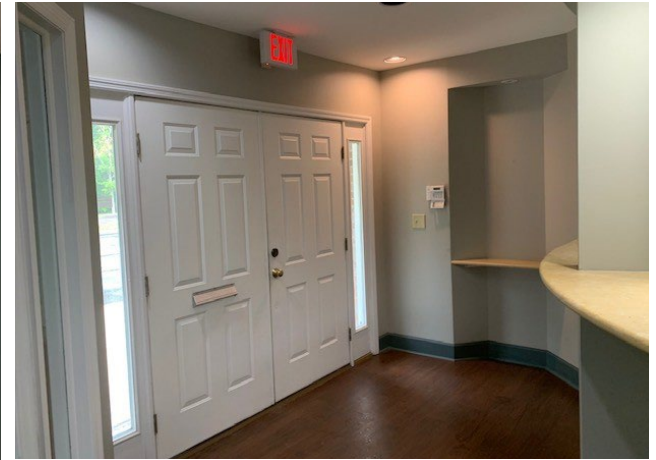


3810 Williamsburg Park Boulevard, Suite 5 | Jacksonville, FL 32257

KAYLA DEGUZMAN  
D - 904.302.6930  
M - 904.208.1168  
kayla@cantrellmorgan.com



# INTERIOR PHOTOS



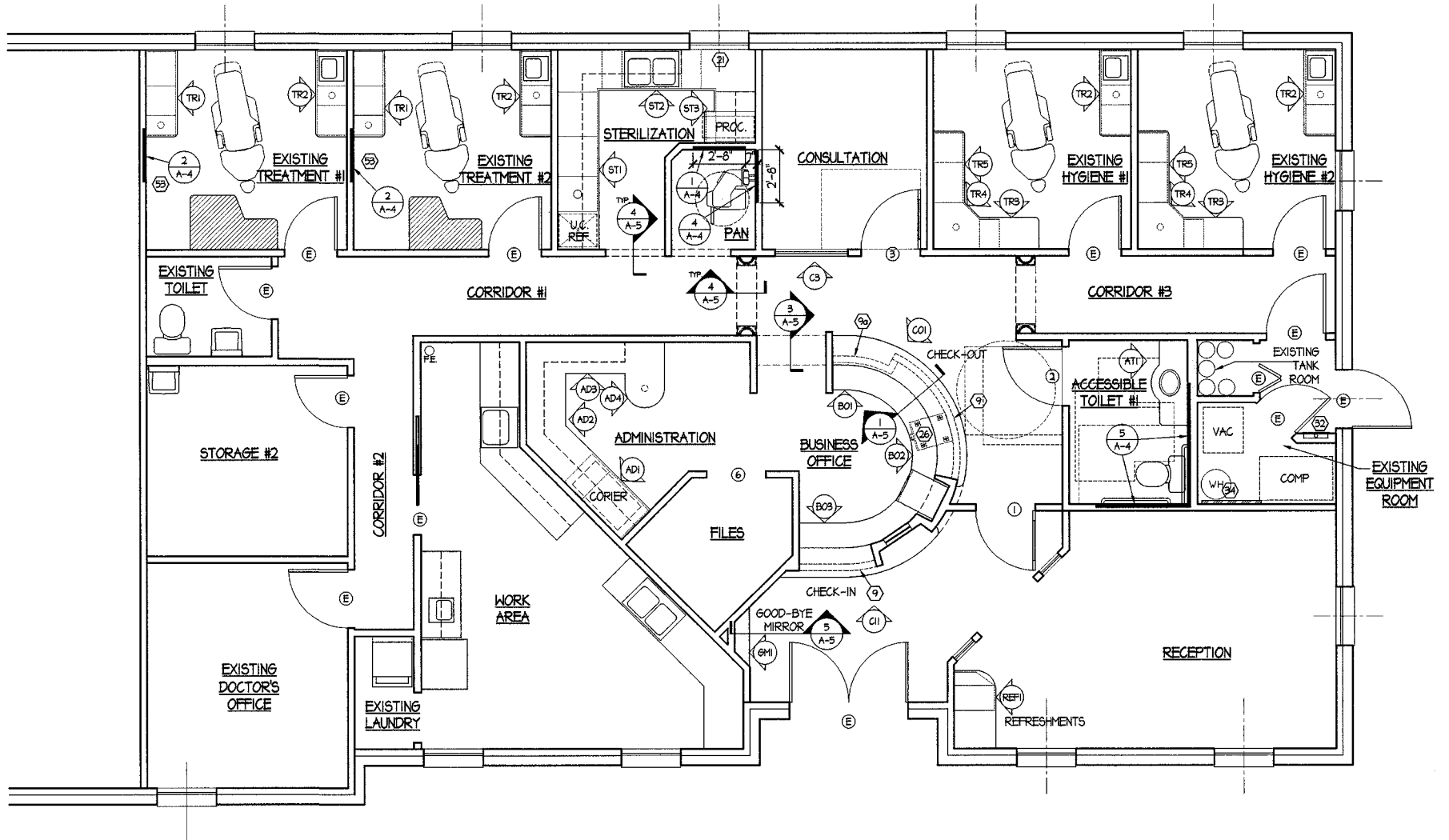
3810 Williamsburg Park Boulevard, Suite 5 | Jacksonville, FL 32257

KAYLA DEGUZMAN  
D - 904.302.6930  
M - 904.208.1168  
kayla@cantrellmorgan.com





# FLOOR PLAN



FLOOR PLAN:  
SCALE: 1/4" = 1'-0"



# PROPERTY AERIAL



3810 Williamsburg Park Boulevard, Suite 5 | Jacksonville, FL 32257

KAYLA DEGUZMAN  
D - 904.302.6930  
M - 904.208.1168  
kayla@cantrellmorgan.com

