



**OFFICE BUILDING FOR LEASE**

# OYSTER POINT COMMONS

11719B & 11721 JEFFERSON AVENUE, NEWPORT NEWS, VA 23608



# OYSTER POINT COMMONS

11719B & 11721 JEFFERSON AVENUE, NEWPORT NEWS, VA 23608

## PROPERTY SUMMARY



### PROPERTY DESCRIPTION

Located in Oyster Point Business District, this complex sits at the high traffic intersection of Jefferson Ave and Pilot House Road. These four buildings feature ample parking, two entrances with visibility and monument signage on Jefferson Avenue. On-site Management with good walkability to a variety of restaurants and residential neighborhoods. Close to I-64 and within blocks of Riverside Hospital & Sentara Port Warwick, Jefferson Lab & Tech Center. Short drive to Newport News/ Williamsburg Airport.

### PROPERTY HIGHLIGHTS

- Monument signage on Jefferson Avenue
- Building signage possibility
- Two entrances with ample parking
- Dedicated Signalized Intersection
- Close proximity to Oyster Point City Center
- Easy ingress/egress to I64

### OFFERING SUMMARY

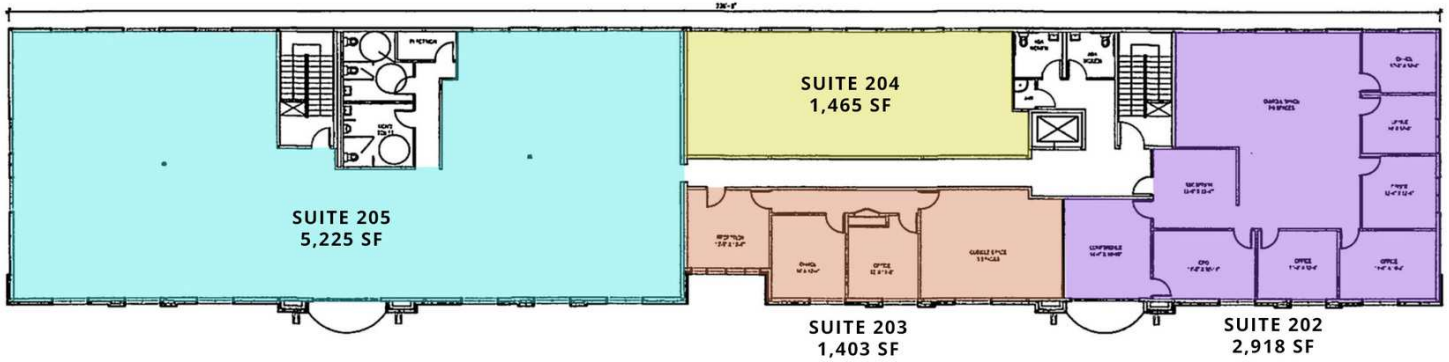
<b>Lease Rate:</b>	\$16.50 - 17.50 SF/yr (Net of Janitorial)
<b>Available SF:</b>	1,400 - 11,000 SF

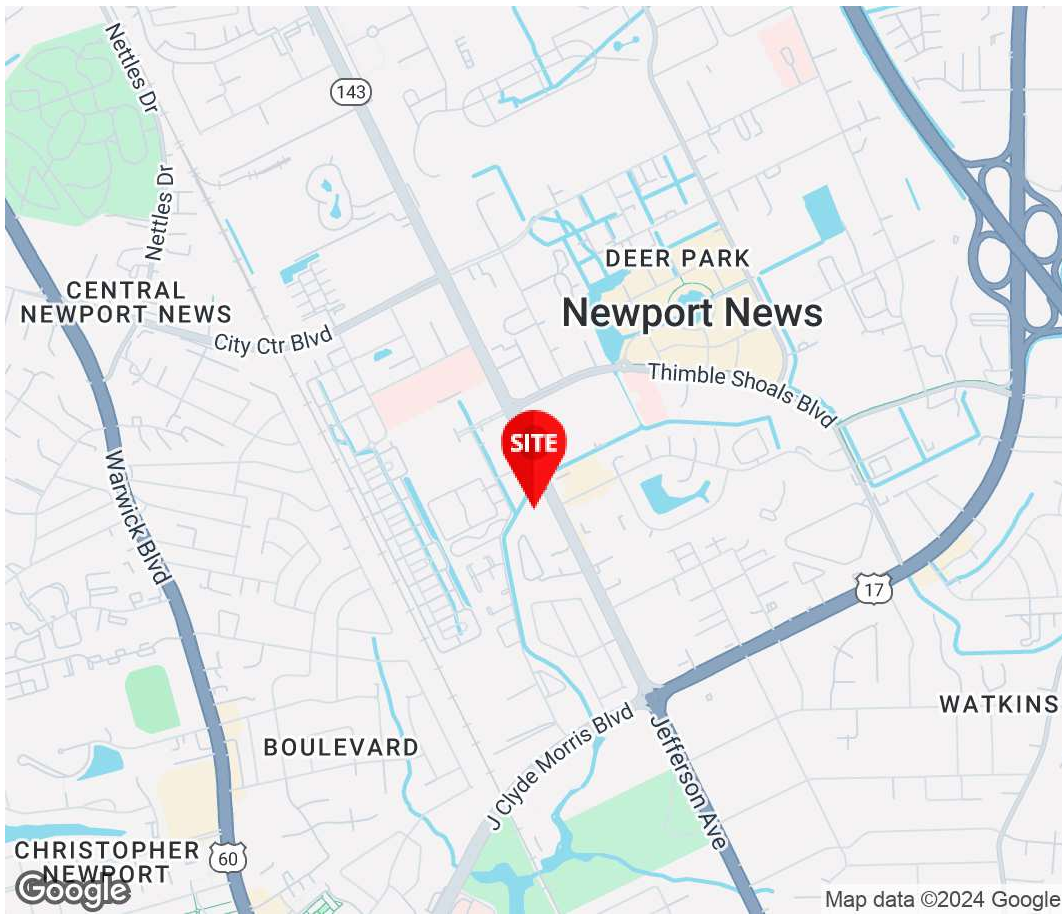
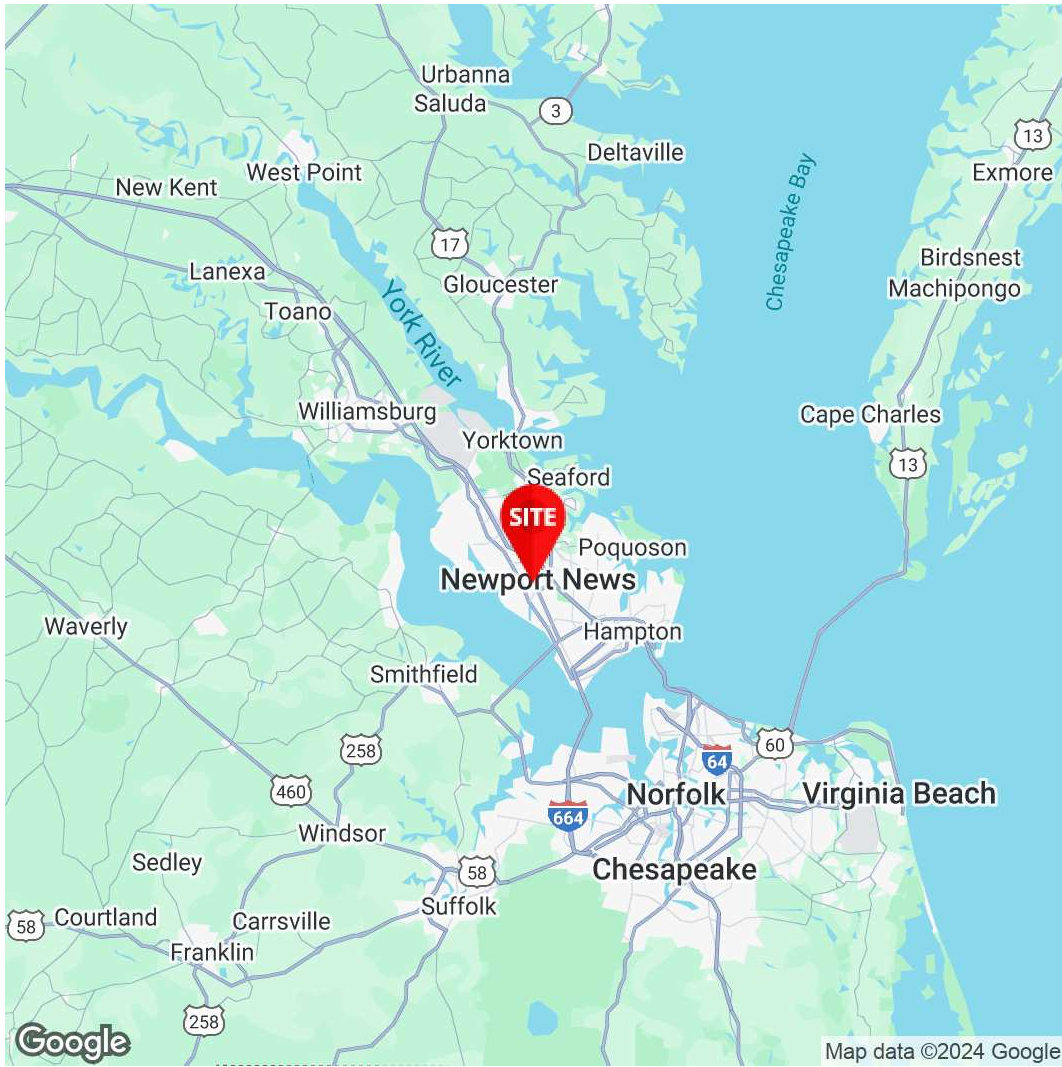
<b>SPACE</b>	<b>LEASE RATE</b>	<b>SPACE SIZE</b>
<b>11719 B - 2nd Floor</b>	\$16.50 SF/yr	1,400 - 11,000 SF

# OYSTER POINT COMMONS

11719B JEFFERSON AVENUE, NEWPORT NEWS, VA 23608

11719B | SECOND FLOOR





**Elizabeth C. Paasch**  
 AVP, Office Leasing and  
 Sales  
 757.333.4322  
 epaasch@divaris.com

The information contained herein should be considered confidential and remains the sole property of Divaris Real Estate, Inc. at all times. Although every effort has been made to ensure accuracy, no liability will be accepted for any errors or omissions. Disclosure of any information contained herein is prohibited except with the express written permission of Divaris Real Estate, Inc.