



SouthPark Center

9400 SOUTHPARK CENTER LOOP – BUILDING T
ORLANDO, FL 32819

- 7,028± RSF furnished space available on the 1st floor
- Full service rental rates
- Double glass door suite entrance at building main entry
- Very efficient floor plates with an 8.56% common area factor on 1st floor
- Sublease term with 4.5+ years
- 4.34+/1,000 RSF parking ratio
- Fully furnished interiors for a quick plug-n-play occupancy
- Recently renovated & high-end interior buildout
- Outdoor meeting & gathering areas with a food truck lunch program
- Electric vehicle charging stations

OFFICE SPACE AVAILABLE FOR SUBLEASE

Highlights	
Size:	7,028 RSF on 1 st floor
Rent:	Below market
Availability:	30-60 days
Term:	September 2029
Furnishings:	Available

For information, please contact:

Jason Schrago

t 407-619-0065

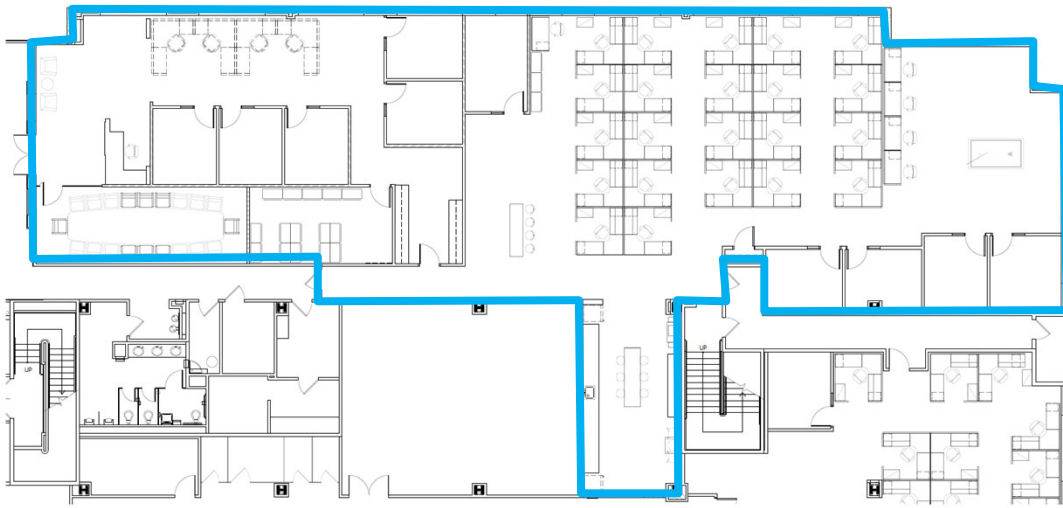
Jason.Schrago@nmrk.com

NEWMARK

400 S. Park Avenue, Suite 220, Winter Park, FL 32789 | nmrk.com

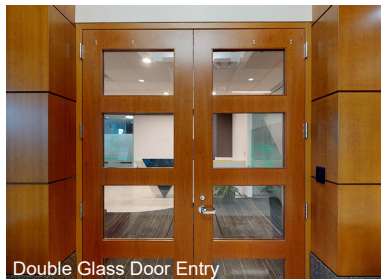
The information contained herein has been obtained from sources deemed reliable but has not been verified and no guarantee, warranty or representation, either express or implied, is made with respect to such information. Terms of sale or lease and availability are subject to change or withdrawal without notice.

FLOOR PLAN

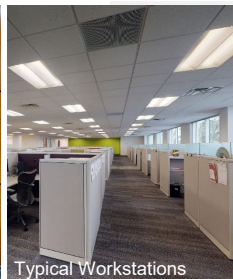


MOVE IN READY

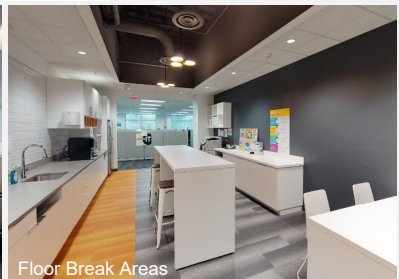
- Reception
- Conference Room
- 10± Offices
- 26-30 Workstations
- Break Room
- IT Room



Double Glass Door Entry

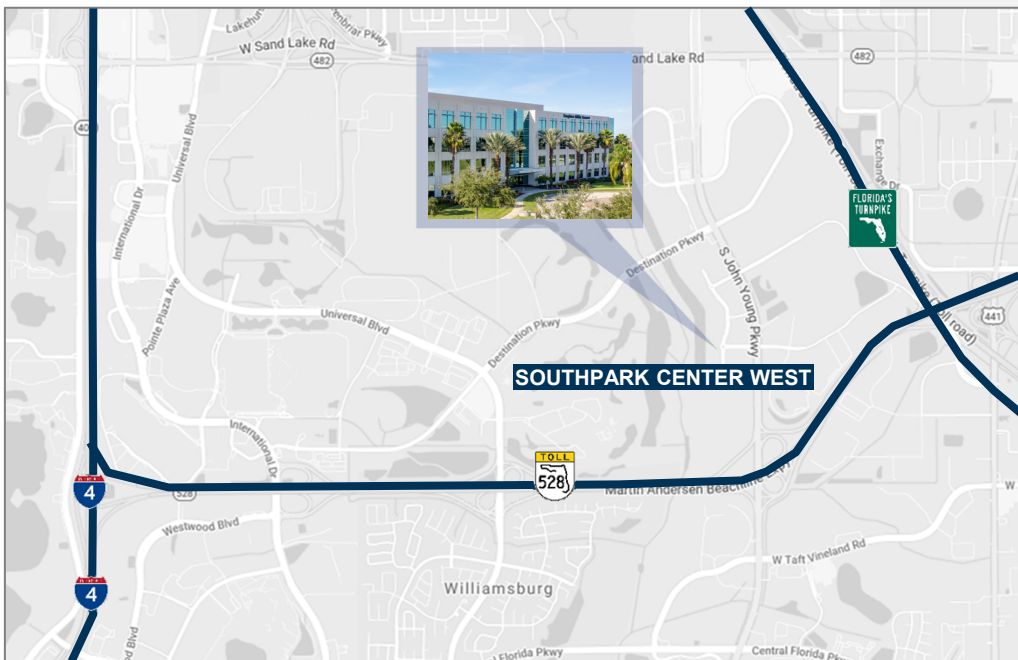


Typical Workstations



Floor Break Areas

LOCATION OVERVIEW



- Multiple ingress and egress roads with traffic signals for easy access in/out of Southpark Center West
- Located adjacent to Beachline Expressway (SR 528) in the heart of Orlando's tourist, convention center and theme parks
- 5 minutes to Florida Turnpike
- 5 minutes to Orange County Convention Center
- 10 minutes to Orlando International Airport
- 10 minutes to Interstate 4
- 20 minutes to Downtown Orlando
- Nearby retail, restaurants, hotels, etc.

For information, please contact:

Jason Schrago

t 407-619-0065

Jason.Schrago@nmrk.com

NEWMARK

400 S. Park Avenue, Suite 220, Winter Park, FL 32789 | nmrk.com

The information contained herein has been obtained from sources deemed reliable but has not been verified and no guarantee, warranty or representation, either express or implied, is made with respect to such information. Terms of sale or lease and availability are subject to change or withdrawal without notice.