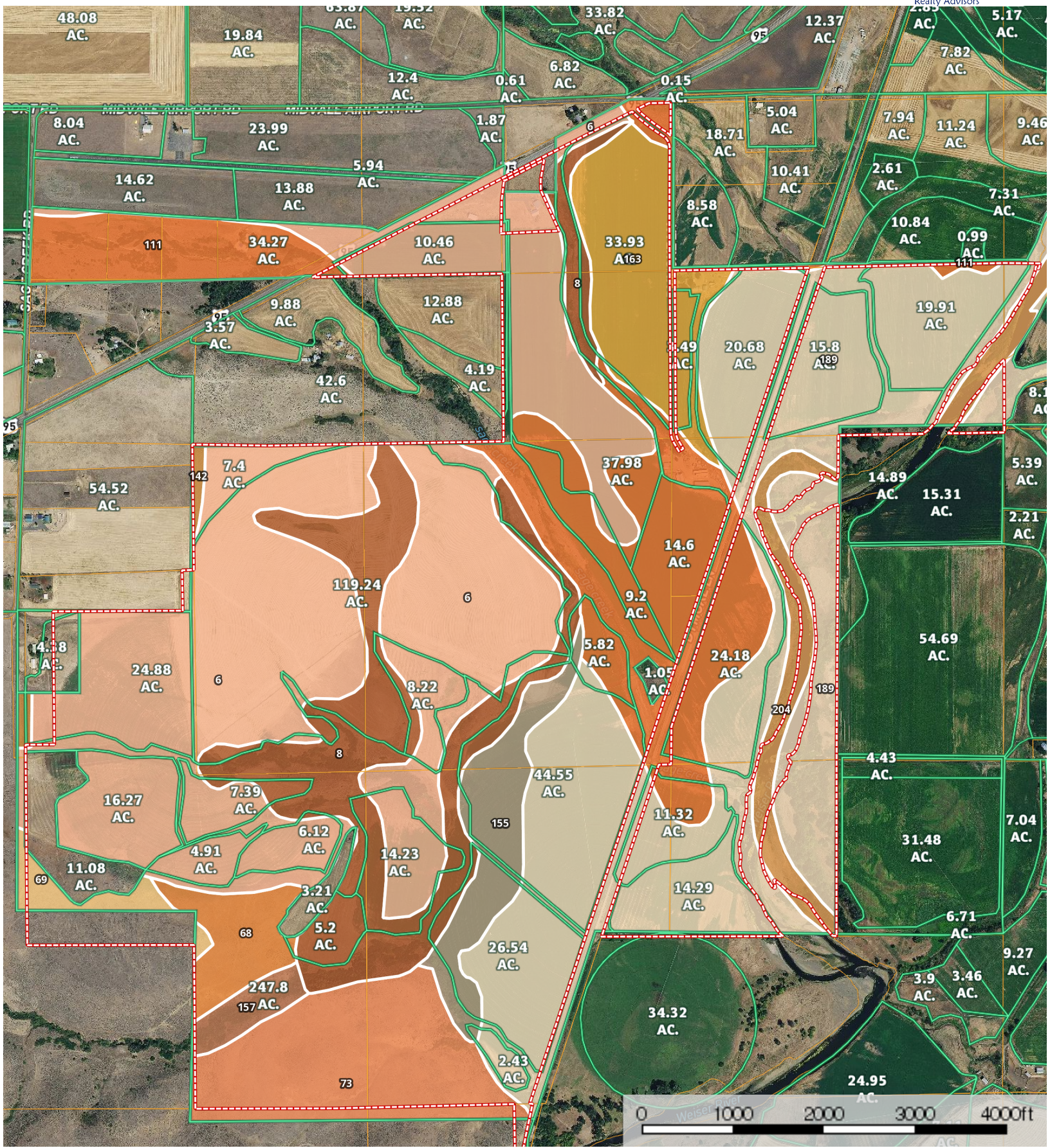



Fairchild Farm on Weiser River
Washington County, Idaho, 777.54 AC +/-



Boundary

|  836.9 ac









SOIL CODE	SOIL DESCRIPTION	ACRES	%	CAP
32	Catherine silt loam, 0 to 3 percent slopes	0.7	0.09	4w
111	Langrell gravelly loam, 0 to 3 percent slopes	125.3	14.97	3c
189	Shoepeg loam, 0 to 3 percent slopes	213.6	25.53	3w
163	Onyx silt loam, 0 to 3 percent slopes	39.9	4.76	3c
8	Appledellia clay loam, 12 to 30 percent slopes	83.1	9.92	4e
155	Newell clay loam, 0 to 2 percent slopes	23.9	2.85	3c
6	Appledellia loam, 2 to 4 percent slopes	242.8	29.01	4s
73	Gem-Reywat complex, 2 to 30 percent slopes	49.1	5.87	6s
69	Gem stony clay loam, 30 to 60 percent slopes	6.7	0.8	7e
142	Midvale silty clay loam, 2 to 4 percent slopes	2.6	0.31	2e
157	Newell clay loam, 4 to 8 percent slopes	6.6	0.79	3c
68	Gem stony clay loam, 2 to 30 percent slopes	14.5	1.73	4e
204	Water	28.2	3.37	-
TOTALS		836.9	100%	3.51

Capability Legend

Increased Limitations and Hazards

Decreased Adaptability and Freedom of Choice Users

Land, Capability

								
	1	2	3	4	5	6	7	8
'Wild Life'	•	•	•	•	•	•	•	•
Forestry	•	•	•	•	•	•	•	
Limited	•	•	•	•	•	•	•	
Moderate	•	•	•	•	•	•		
Intense	•	•	•	•	•			
Limited	•	•	•	•				
Moderate	•	•	•					
Intense	•	•						
Very Intense	•							

Grazing Cultivation

(c) climatic limitations (e) susceptibility to erosion

(s) soil limitations within the rooting zone (w) excess of water