

HEATHERLY BUILDING

128 Auburn Court
Westlake Village, CA 91362

NAI Capital
COMMERCIAL REAL ESTATE SERVICES, WORLDWIDE

HEATHERLY BUILDING
FEY CHIROPRACTIC
128 AUBURN COURT

FOR LEASE

Small Office Suites Available

Evelyn Hamilton

818.742.1646

ehamilton@naicapital.com

CA DRE #01925029

No warranty, express or implied, is made as to the accuracy of the information contained herein. This information is submitted subject to errors, omissions, change of price, rental or other conditions, withdrawal without notice, and is subject to any special listing conditions imposed by our principals. Cooperating brokers, buyers, tenants and other parties who receive this document should not rely on it, but should use it as a starting point of analysis, and should independently confirm the accuracy of the information contained herein through a due diligence review of the books, records, files and documents that constitute reliable sources of the information described herein. Logos are for identification purposes only and may be trademarks of their respective companies. NAI Capital Commercial, Inc. CAL DRE Lic. #02130474

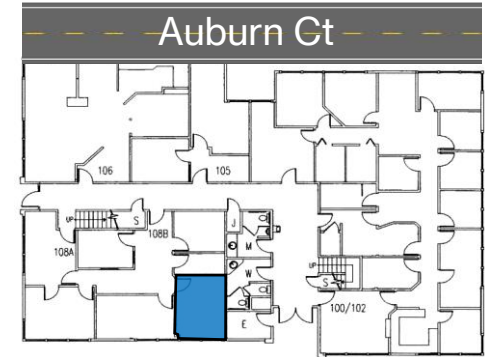
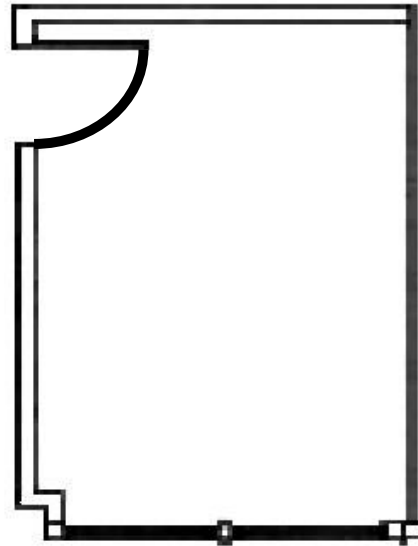


PROPERTY FEATURES

- ❑ Prime Westlake location near retail and restaurants
- ❑ Ideal for small office tenants
- ❑ High-speed fiber-optic internet available
- ❑ Abundant parking available
- ❑ Convenient access to Ventura (101) Freeway

AVAILABILITY

FLOOR	SUITE	SIZE	RATE	AVAILABILITY
1	108 B	161 RSF	\$500/MO, MG	AVAILABLE
1	108 A	372 RSF	\$2.00/SF, MG	LEASED
2	201	686 RSF	\$2.00/SF, MG	AVAILABLE MARCH 1 ST
2	202	752 RSF	\$1.95/SF, MG	LEASED
2	205	450 RSF	\$1.95/SF, MG	LEASED



SUITE FEATURES

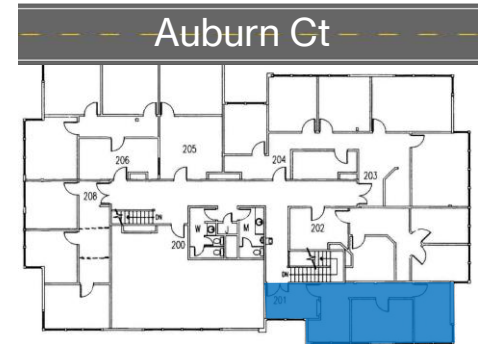
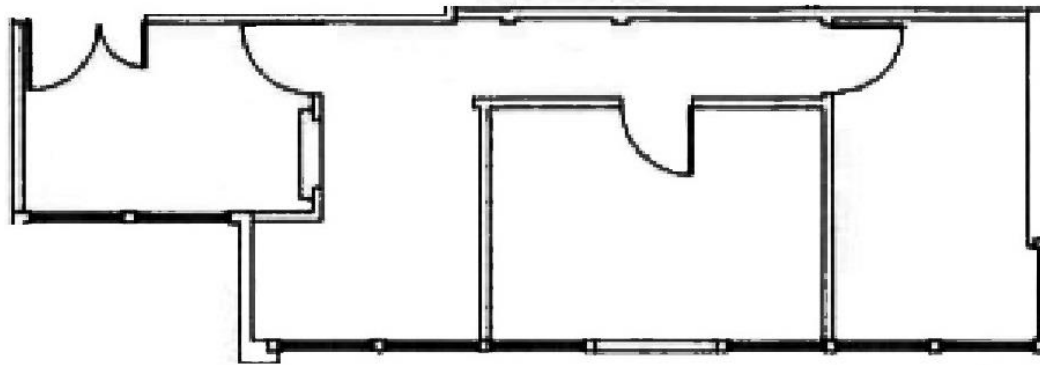
- Executive Suite
- Fully Furnished
- Utilities included
- Tenant pays data and janitorial

*Not to Scale

FLOOR	SUITE	SIZE	RATE	AVAILABILITY
1	108 B	161 RSF	\$500/MO, MG	VACANT

Evelyn Hamilton
 818.742.1646
 ehamilton@naicapital.com
 CA DRE #01925029

No warranty, express or implied, is made as to the accuracy of the information contained herein. This information is submitted subject to errors, omissions, change of price, rental or other conditions, withdrawal without notice, and is subject to any special listing conditions imposed by our principals. Cooperating brokers, buyers, tenants and other parties who receive this document should not rely on it, but should use it as a starting point of analysis, and should independently confirm the accuracy of the information contained herein through a due diligence review of the books, records, files and documents that constitute reliable sources of the information described herein. Logos are for identification purposes only and may be trademarks of their respective companies. NAI Capital Commercial, Inc. CAL DRE Lic. #02130474



SUITE FEATURES

- Beautiful front entry waiting area/foyer
- Double doors
- End unit
- 3 offices, windows in all rooms

*Not to Scale

FLOOR	SUITE	SIZE	RATE	AVAILABILITY
2	201	686 RSF	\$2.00/SF, MG	AVAILABLE MARCH 1 ST

Evelyn Hamilton
 818.742.1646
 ehamilton@naicapital.com
 CA DRE #01925029

No warranty, express or implied, is made as to the accuracy of the information contained herein. This information is submitted subject to errors, omissions, change of price, rental or other conditions, withdrawal without notice, and is subject to any special listing conditions imposed by our principals. Cooperating brokers, buyers, tenants and other parties who receive this document should not rely on it, but should use it as a starting point of analysis, and should independently confirm the accuracy of the information contained herein through a due diligence review of the books, records, files and documents that constitute reliable sources of the information described herein. Logos are for identification purposes only and may be trademarks of their respective companies. NAI Capital Commercial, Inc. CAL DRE Lic. #02130474

HEATHERLY BUILDING

128 Auburn Court
Westlake Village, CA 91362

NAICapital
COMMERCIAL REAL ESTATE SERVICES, WORLDWIDE

FOR LEASE

Small Office Suites Available

Evelyn Hamilton

818.742.1646

ehamilton@naicapital.com

CA DRE #01925029

No warranty, express or implied, is made as to the accuracy of the information contained herein. This information is submitted subject to errors, omissions, change of price, rental or other conditions, withdrawal without notice, and is subject to any special listing conditions imposed by our principals. Cooperating brokers, buyers, tenants and other parties who receive this document should not rely on it, but should use it as a starting point of analysis, and should independently confirm the accuracy of the information contained herein through a due diligence review of the books, records, files and documents that constitute reliable sources of the information described herein. Logos are for identification purposes only and may be trademarks of their respective companies. NAI Capital Commercial, Inc. CAL DRE Lic. #02130474