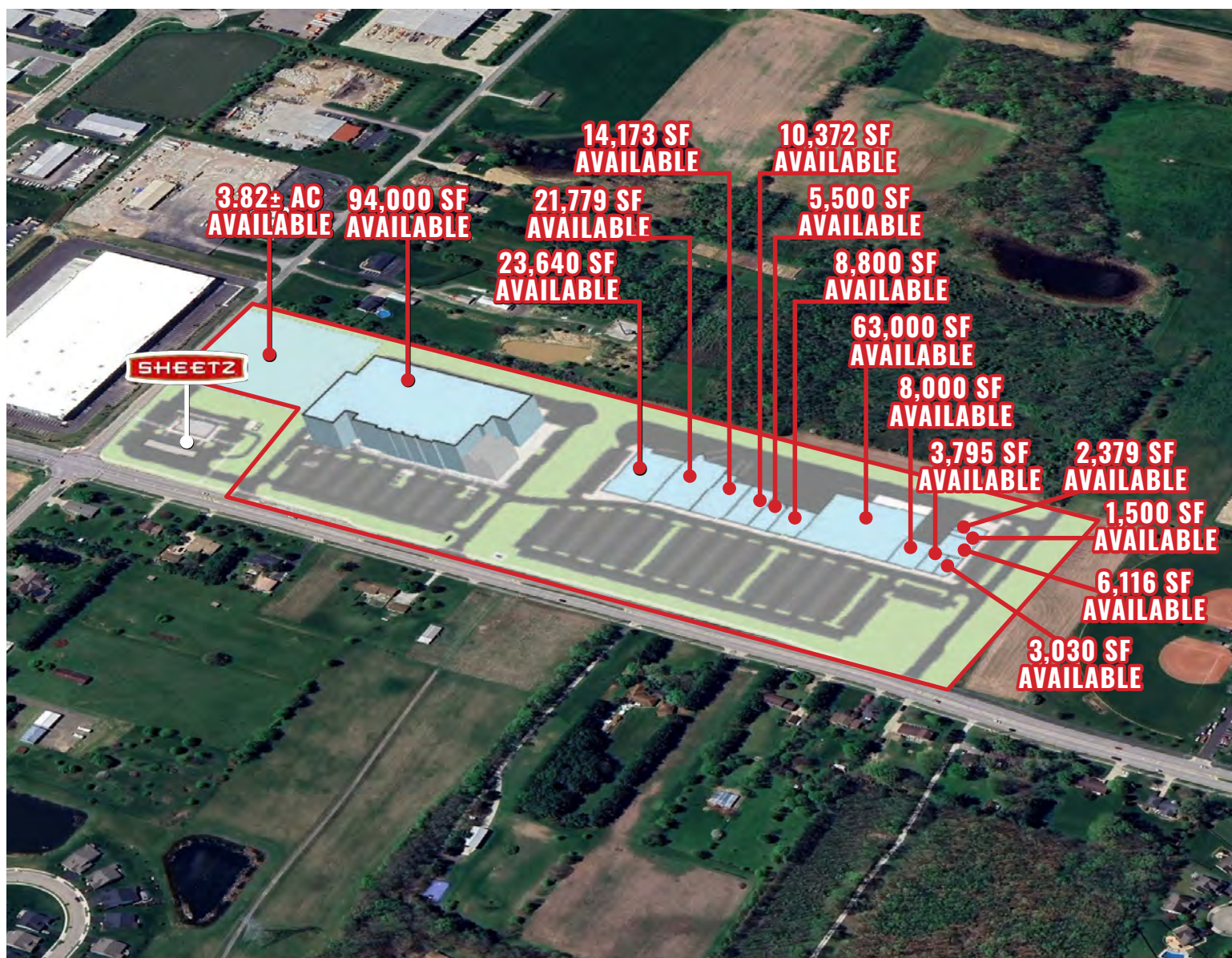




Diley Rd & Busey Rd, Pickerington, OH

# DILEY ROAD DEVELOPMENT



**DANIEL CLARK**  
daniel@goodmanrealestate.com  
**CHAD HAMRICK**  
chad@goodmanrealestate.com  
**JOE BELINSKE**  
joe@goodmanrealestate.com

**100 W. OLD WILSON BRIDGE ROAD  
SUITE 207, COLUMBUS, OHIO 43085**

Phone: (216) 381-8200  
[www.goodmanrealestate.com](http://www.goodmanrealestate.com)

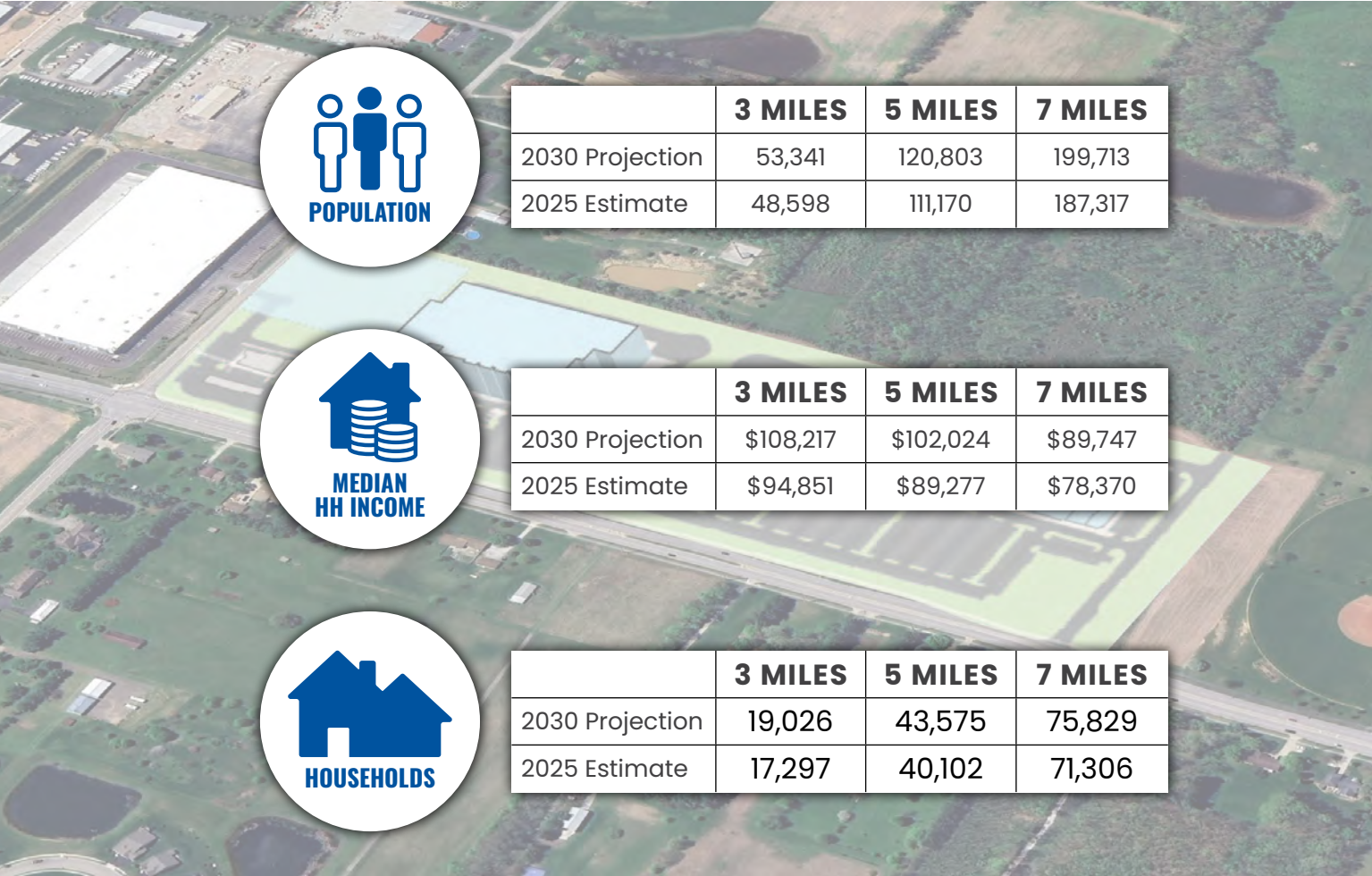


# HIGHLIGHTS & DEMOGRAPHICS

## Diley Road Development

A 35-AC, mixed-use development located a ½ mile north of Hwy 33 in the southeastern suburbs of Columbus. Ideally positioned between Canal Winchester and Pickerington, this development provides retailers, restaurants, and service providers the opportunity to tap into this high-growth area of Fairfield County.

- Anchor positions ranging from 20,000 – 100,000 square feet available
- Outparcels ideal for restaurant, retail, and other daily needs now available
- Located on Diley Road within ½ mile of Hwy 33 and Meijer
- Located next to a 244 unit residential village
- Canal Winchester and Pickerington boast Median Household Incomes above \$111,000
- Located in Fairfield County, Ohio’s 4th fastest growing county over the past decade
- Fast growing area with 4,400+ residential units (single and multi-family combined) approved and under development



South High Street,  
Columbus OH



# COLUMBUS MARKET OVERVIEW

The Columbus Region has one of the most dynamic and flourishing economies in the United States, with a 1.4% annual growth rate, it’s the fastest growing major metro in the Midwest.

- 2.1 Million People
- 15 Fortune 1000 Headquarters
- 5 Fortune 500 Headquarters
- 8th Highest Millennial Concentration in the U.S.
- More than 450 Foreign-owned establishments
- 53 college and university campuses

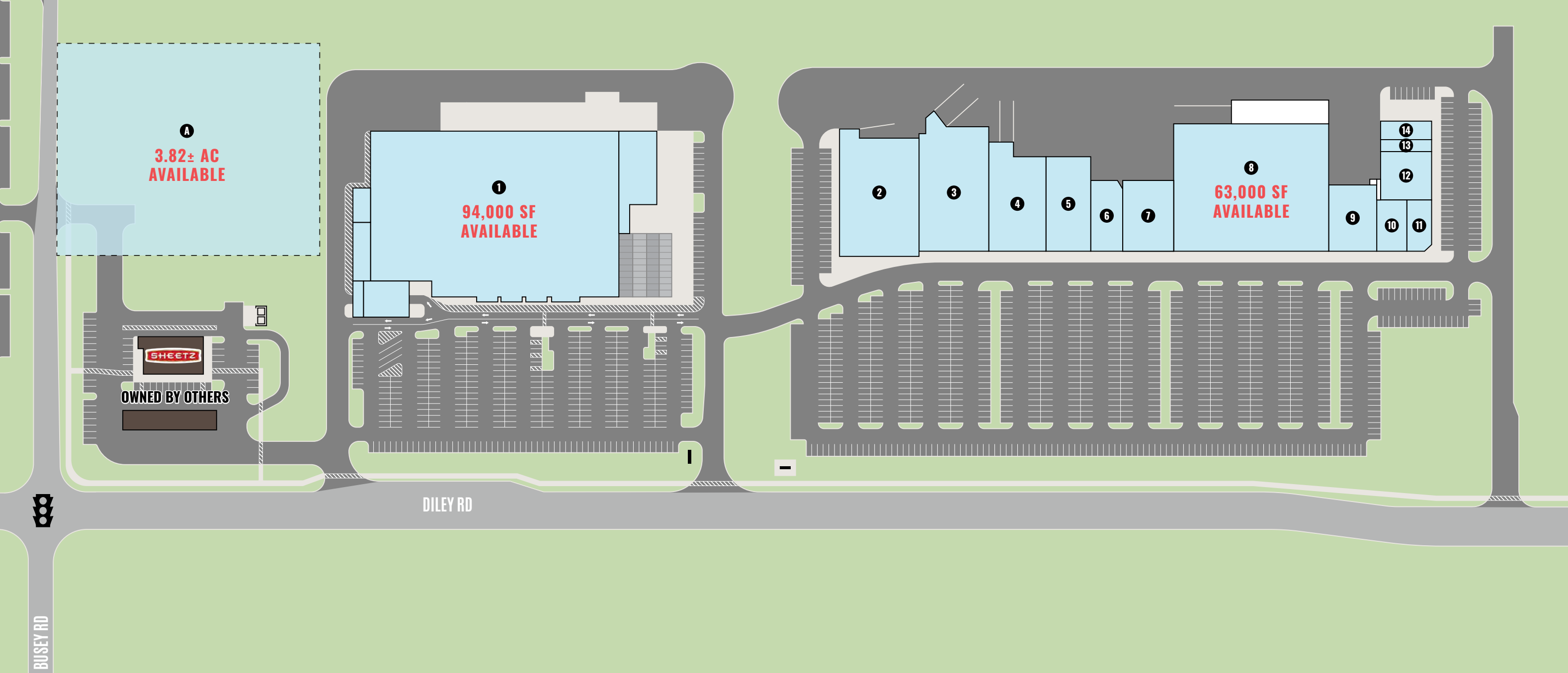
The site is less than 1,000 feet from Interstate 270 and major transportation corridors.





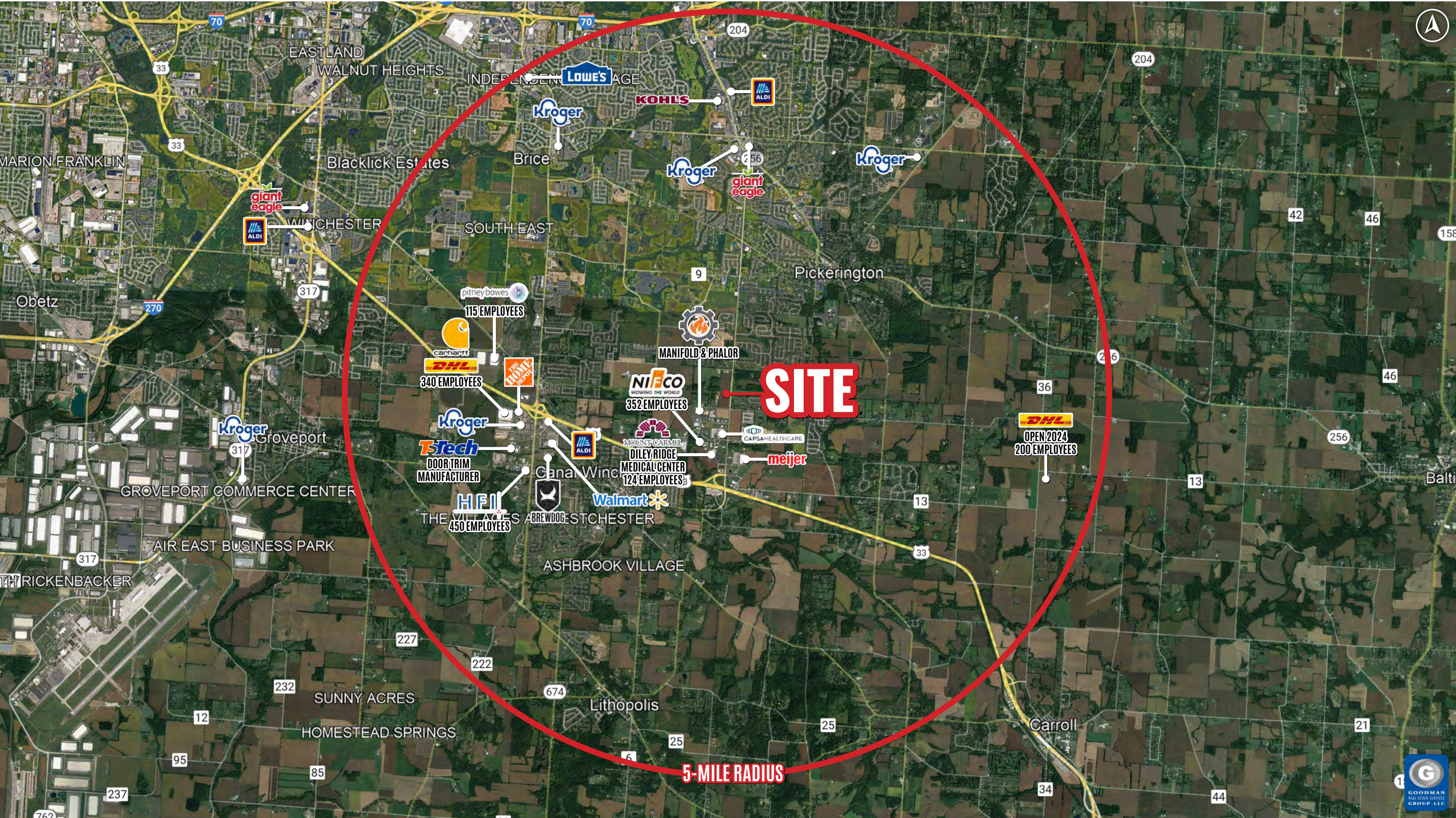
# SITE PLAN

| KEY                    | UNIT | TENANT    | SIZE (SQ. FT.) | UNIT | TENANT    | SIZE (SQ. FT.) |
|------------------------|------|-----------|----------------|------|-----------|----------------|
| <div>AVAILABLE</div>   | A    | Available | 3.82± AC       | 8    | Available | 63,000         |
| <div>LEASED</div>      | 1    | Available | 94,000         | 9    | Available | 8,000          |
| <div>NEGOTIATING</div> | 2    | Available | 23,640         | 10   | Available | 3,795          |
| <div>NOT PART</div>    | 3    | Available | 21,779         | 11   | Available | 3,030          |
|                        | 4    | Available | 14,173         | 12   | Available | 6,116          |
|                        | 5    | Available | 10,372         | 13   | Available | 1,500          |
|                        | 6    | Available | 5,500          | 14   | Available | 2,379          |
|                        | 7    | Available | 8,800          |      |           |                |





# BUSINESS AERIAL





# CONSTRUCTION AERIAL

NEW HOMES AND MULTI-FAMILY DEVELOPMENT MAP

Approximately 4,735 New Units Within 5-Mile Radius of Site

UNITS

HOMES

UNITS

APARTMENTS

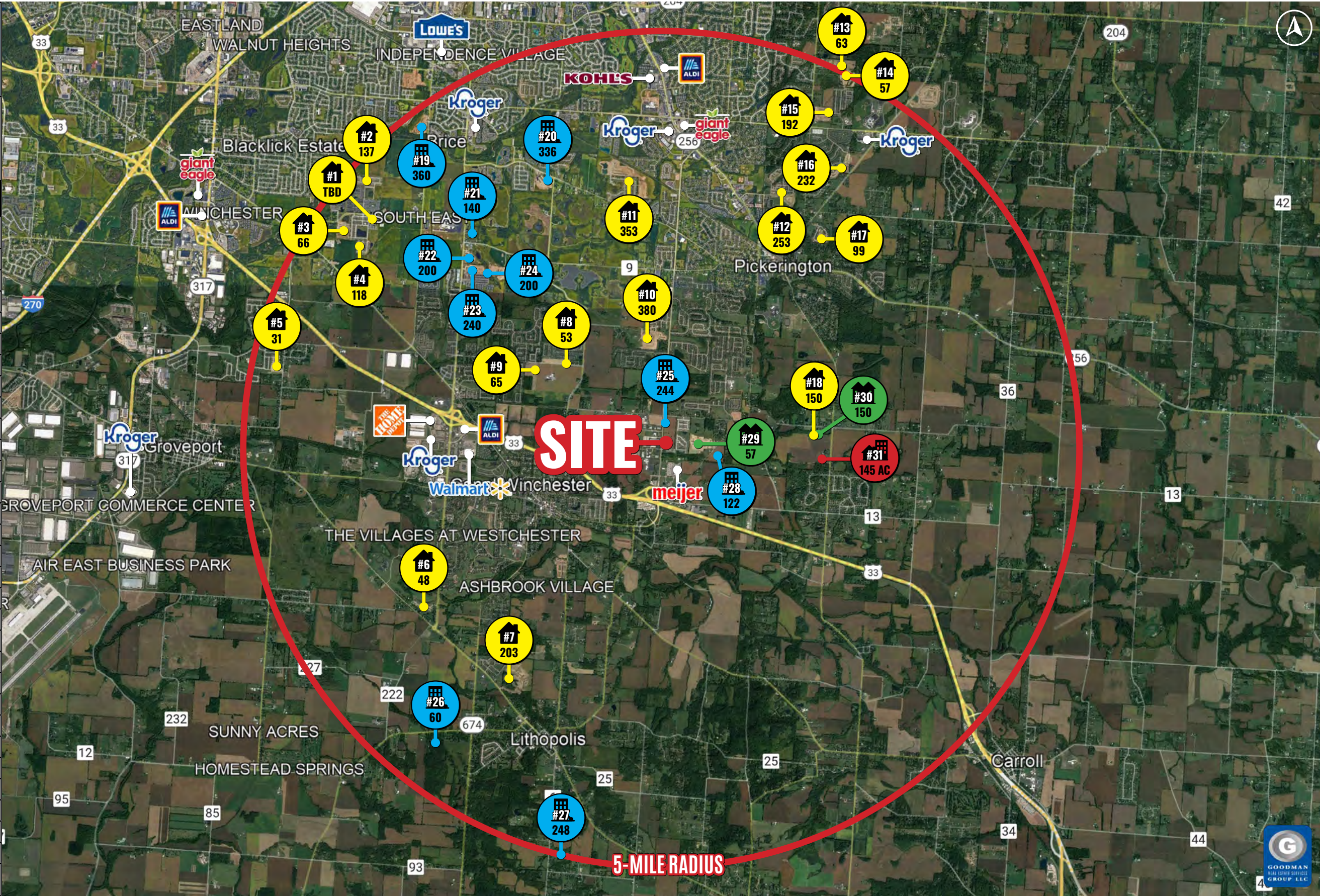
UNITS

TOWNHOMES / CONDOS

ACRES

MIXED USE DEVELOPMENT

| #  | HOUSING PROPERTY  | NEW    |
|----|---|--------|
| 1  | Hamptons at Shannon Lakes Under Construction                            | TBD    |
| 2  | Shannon Farms   | 137    |
| 3  | Meadows at Shannon Lakes  | 66     |
| 4  | Shannon Lakes   | 118    |
| 5  | Hickory Grove   | 31     |
| 6  | Gardens of Villages of Winchester                                       | 48     |
| 7  | Summit at Wagnalls Run  | 203    |
| 8  | Courtyards at Lehman  | 53     |
| 9  | Orchard Lakes   | 65     |
| 10 | Reserve at Pickerington Ponds   | 380    |
| 11 | Longview Highlands  | 353    |
| 12 | Wellington Park   | 253    |
| 13 | Chesapeake  | 63     |
| 14 | Lake Forest   | 57     |
| 15 | Graystone North   | 192    |
| 16 | Meadows at Spring Creek   | 232    |
| 17 | Spring Grove  | 99     |
| 18 | Fischer Homes (Coming Soon)   | 150    |
| 19 | Essex Park  | 360    |
| 20 | Lawndale Commons  | 336    |
| 21 | Retreat at Canal  | 140    |
| 22 | The Residences at Akita Lane  | 200    |
| 23 | Brynwood Reserve  | 240    |
| 24 | The Residences at James Place   | 200    |
| 25 | Proposed Development  | 244    |
| 26 | Villas at Swan Pointe   | 60     |
| 27 | Riverside Trail   | 248    |
| 28 | Canal Winchester Village (Coming Soon)                                  | 122    |
| 29 | Greengate Cove  | 57     |
| 30 | Fischer Homes (Coming Soon)   | 150    |
| 31 | Proposed Mixed Use Development<br>50 AC Commercial - 95 AC Residential/ | 145 AC |



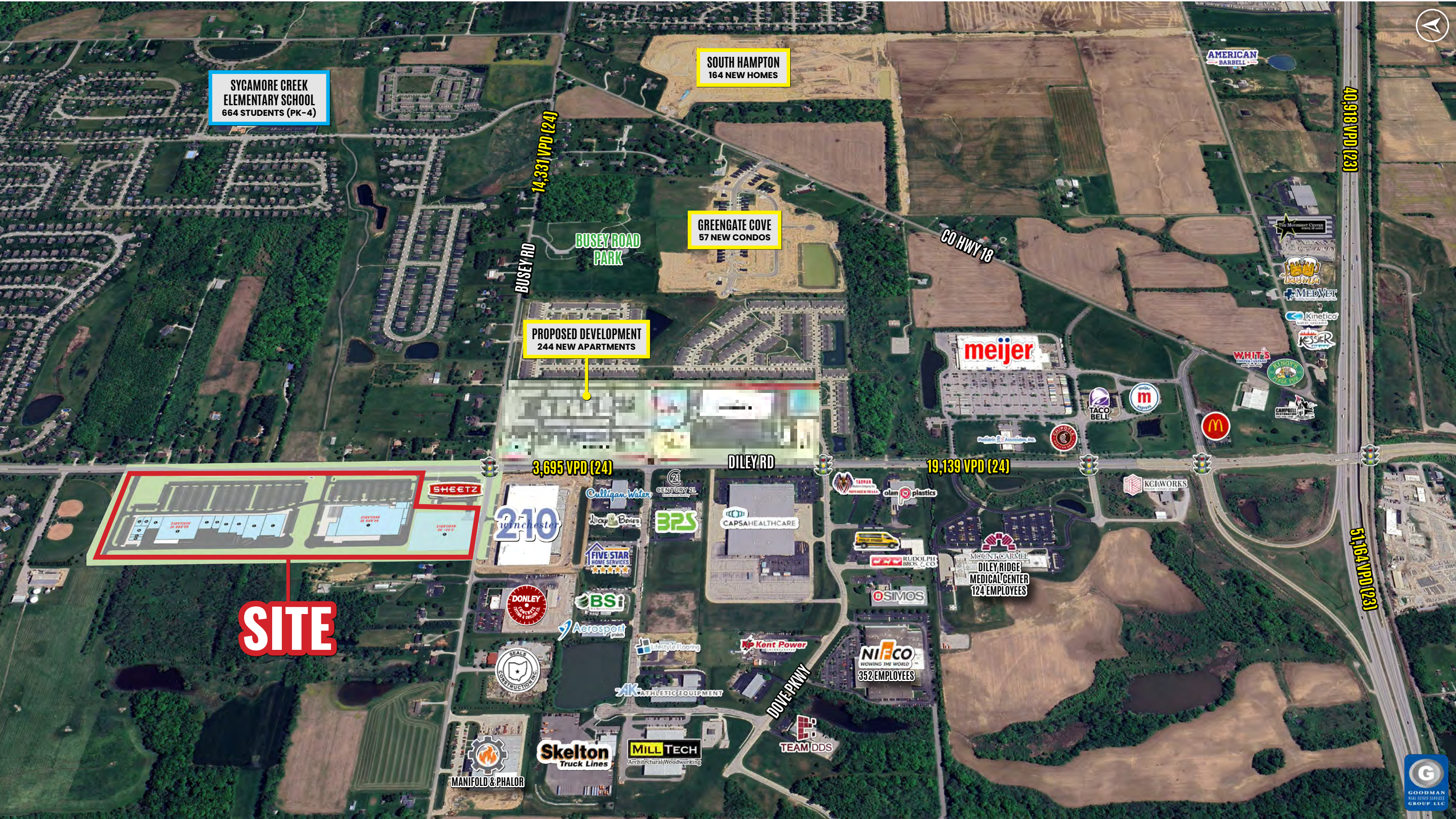


# MACRO AERIAL





# MICRO AERIAL







## **BUILDING RELATIONSHIPS**



**MARKETING  
SERVICES**



**TENANT  
SERVICES**



**INVESTMENT  
SALES**

## **CREATING VALUE**



**DISPOSITIONS**



**LEASE  
SERVICES**

## **ACHIEVING SUCCESS**



**[WWW.GOODMANREALESTATE.COM](http://WWW.GOODMANREALESTATE.COM)**



**DANIEL CLARK**  
[daniel@goodmanrealestate.com](mailto:daniel@goodmanrealestate.com)  
**CHAD HAMRICK**  
[chad@goodmanrealestate.com](mailto:chad@goodmanrealestate.com)  
**JOE BELINSKE**  
[joe@goodmanrealestate.com](mailto:joe@goodmanrealestate.com)

**100 W. OLD WILSON BRIDGE ROAD  
SUITE 207, COLUMBUS, OHIO 43085**

Phone: (216) 381-8200  
[www.goodmanrealestate.com](http://www.goodmanrealestate.com)