

FOR LEASE

# OFFICE SPACE

9632 W Emerald Suite E, Boise, ID 83704



## WESTPARK STATION



### OFFERING SUMMARY

Available SF: 2,408 SF

Lease Type: FSEJ

Building Type: Office Industrial

Lease Rate: \$18.50 SF/yr (FSEJ)

Building Size: 13,160 SF

### PROPERTY OVERVIEW

Located in the Emerald Business Corridor on Emerald between Maple Grove Road and Five Mile. Westpark Station has excellent access to the Boise Airport and Interstate 84. Flexible leasing options are available. The two-building complex features a landscaped courtyard between the buildings. This office space is available immediately for tenant & customer use.

Open office floor plan with lots of flexibility to either build out offices or use cubicles for a much more flexible office suite.



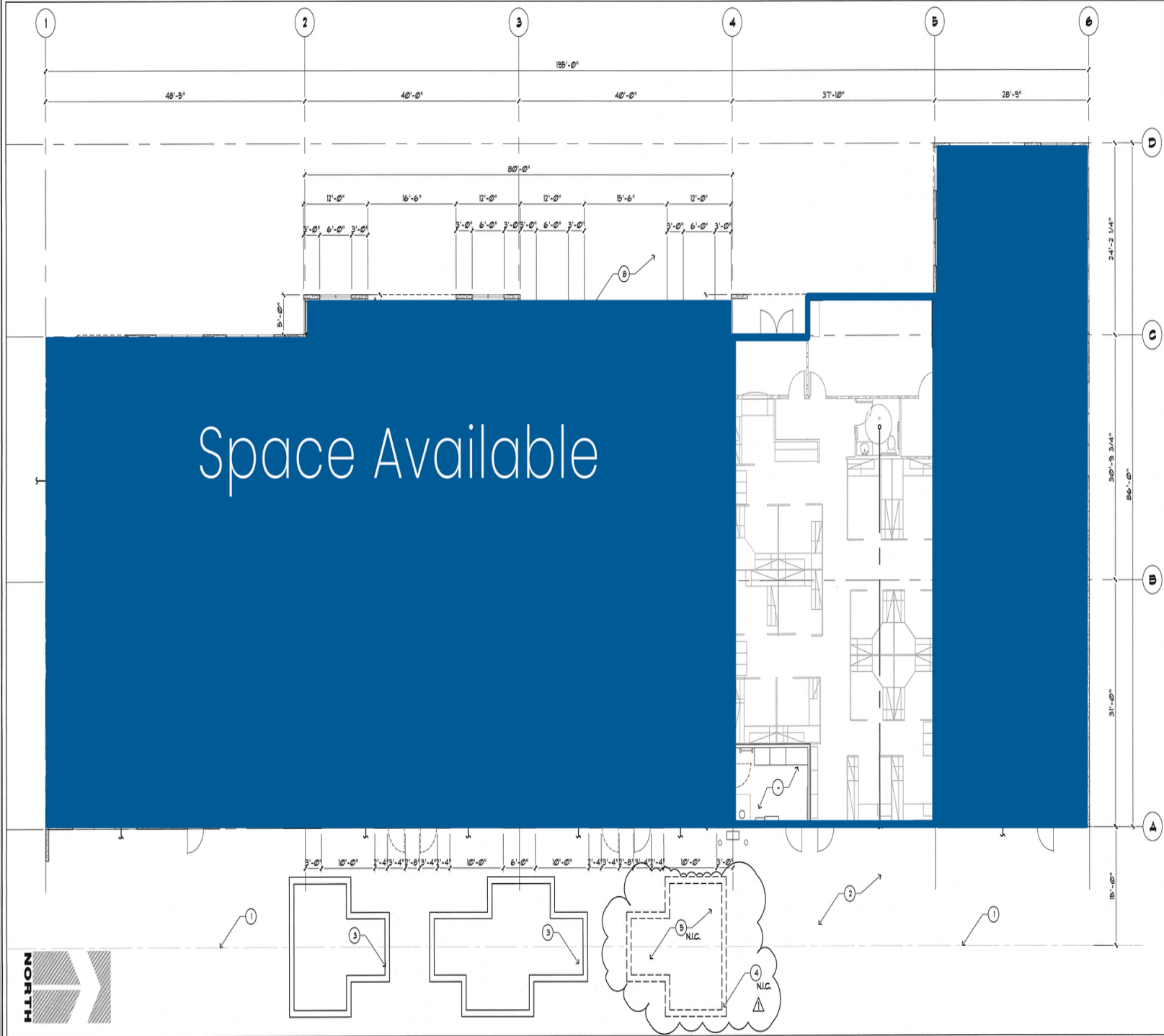
FOR LEASE

# OFFICE SPACE

9632 W Emerald Suite E, Boise, ID 83704



## SITE PLAN



Space Available



KZB REAL ESTATE

101 S CAPITOL BLVD STE 701 - BOISE, ID 83702

WWW.KZBREALESTATE.COM



FOR LEASE

# OFFICE SPACE

9632 W Emerald Suite E, Boise, ID 83704



## ADDITIONAL PHOTOS



KZB REAL ESTATE  
101 S CAPITOL BLVD STE 701 - BOISE, ID 83702  
WWW.KZBREALESTATE.COM

