

Riverview Hall 9215 Riverview Dr Suite 125

St. Louis, MO 63137

**37,580 SF
OFFICE/WAREHOUSE
FOR LEASE**

- 2.5 Acres +/- Paved, Fenced, Outdoor Storage
- 1,400 SF Office Space
- "K"-Unrestricted Zoning
- 6 Loading Docks with Levelers & Under Roof
- 1 Drive-In Door (12' x 14')
- 12'-17' Clear Height (27'6" at Roof Peak)
- Lease Rate: \$4.50 PSF, NNN

FOR MORE INFORMATION CONTACT:

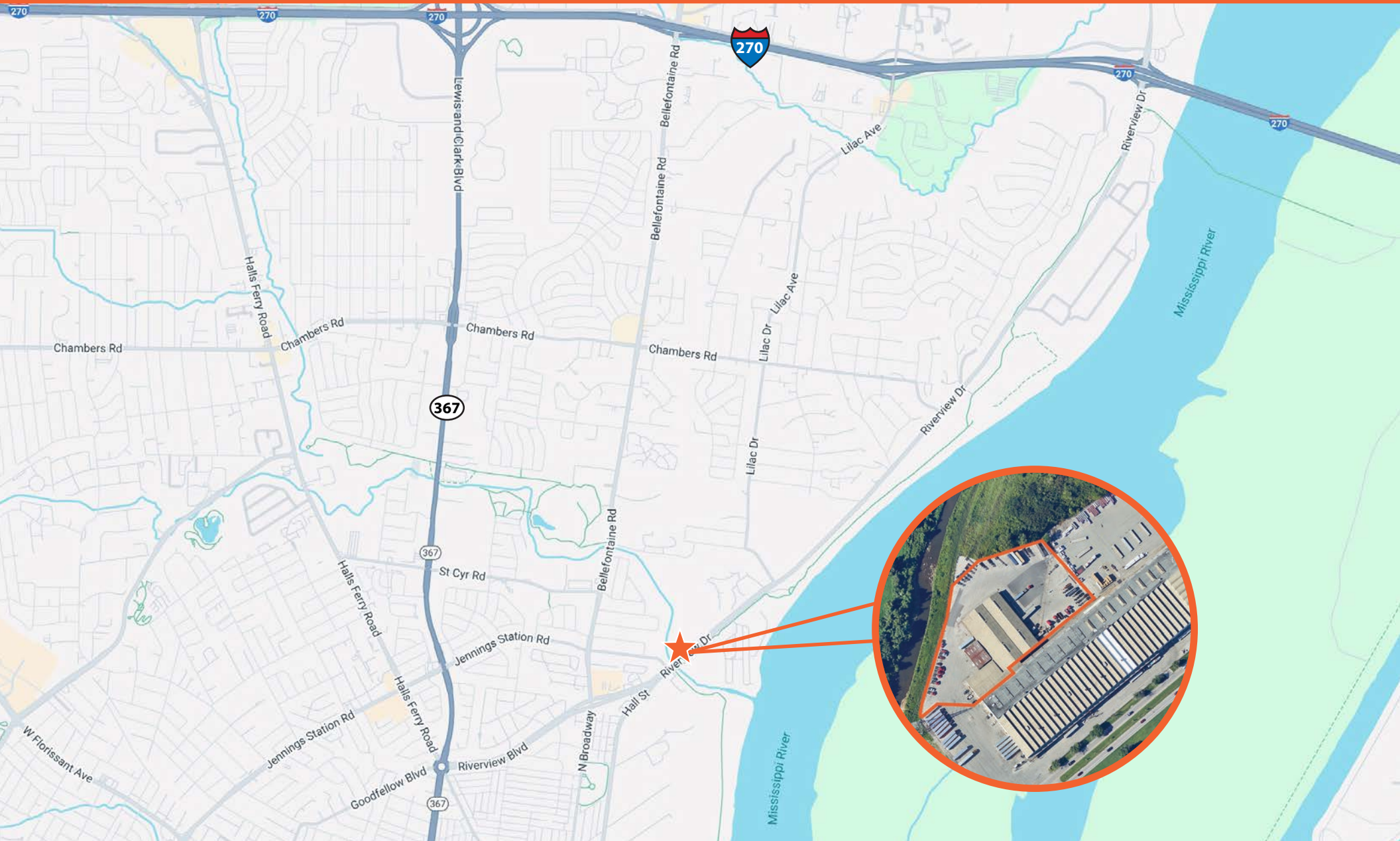
Louis Copilevitz | (314) 746-1451
lcopilevitz@gershmancre.com

Lou Panopoulos | (314) 746-1428
lpanopoulos@gershmancre.com





9215 Riverview Dr



Gershman
Commercial Real Estate

The information contained herein is not warranted, although it has been obtained from the owner of the property or from other sources we deem reliable. It is subject to change without notice. Owner and broker make no representation as to the environmental condition of the property and recommend purchaser's/tenant's independent investigation.

GERSHMANCRE.COM