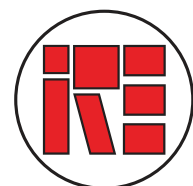


# Eastlake Commerce Park



## PROPERTY FEATURES

- Located Directly Across from Eastlake Post Office
- Office Space from 1,032 - 1,049 SF
- Well Maintained Building & Common Areas
- Walking Distance to Scobee Park
- Close to Retail Center & Restaurants
- Excellent Street Frontage & near the SR-125 entrance/exit



IRE DEVELOPMENT

### CONTACT:

Zachary Vogt  
(619) 904-0424  
zach@iredevelopment.com  
Lic. 02167776

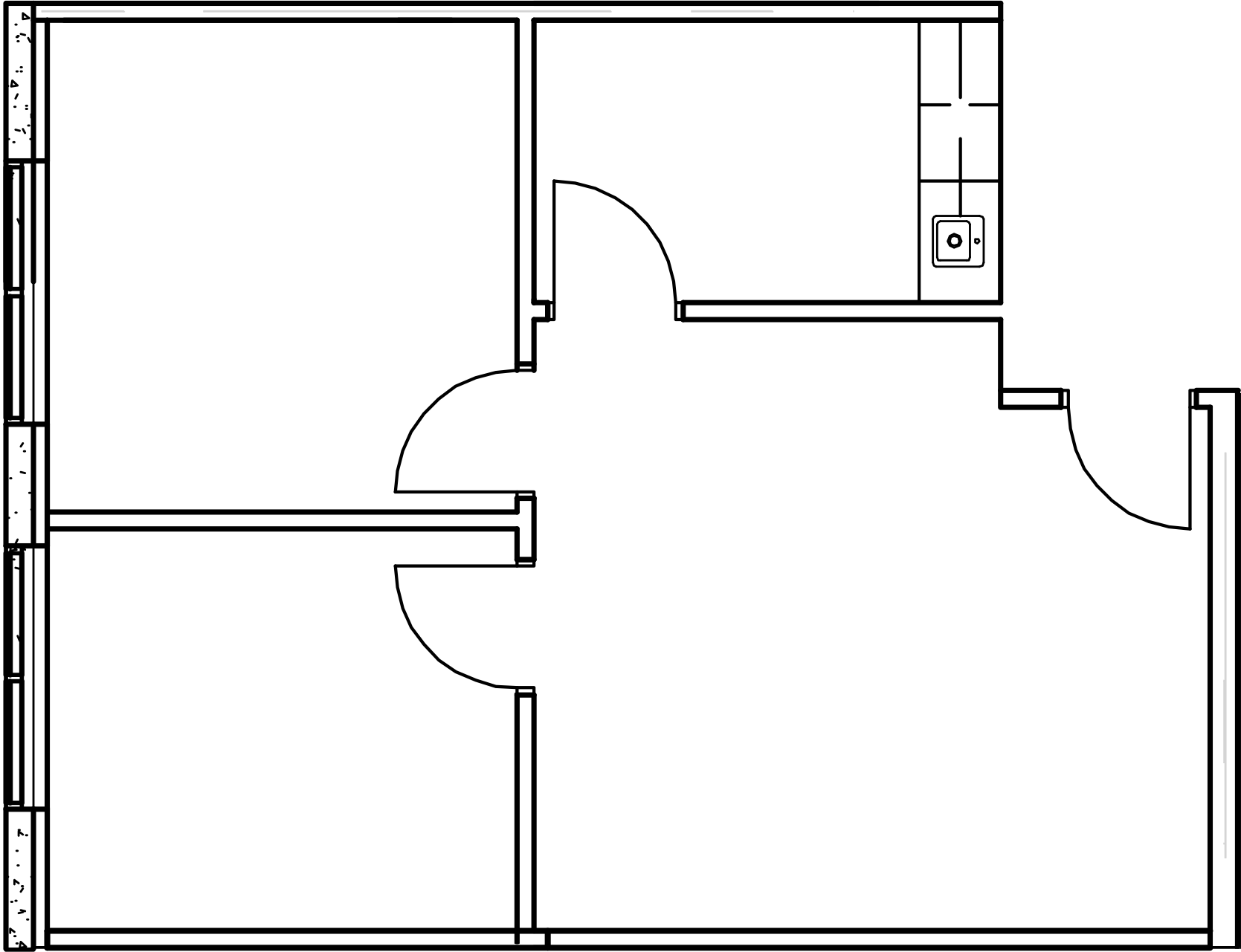
# Office & Warehouse Space | For Lease Eastlake Commerce Park

821 & 825 Kuhn Drive,  
Chula Vista CA 91914

## AVAILABILITY:

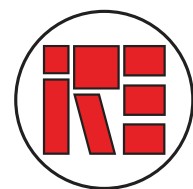
<u>SUITE #</u>	<u>TOTAL SF</u>	<u>MONTHLY RENT/PSF</u>	<u>DESCRIPTION</u>
821-206	1,049	\$1.60 + NNN *2024 NNN ESTIMATED AT \$0.49	RECEPTION, TWO PRIVATE OFFICES, BREAK ROOM WITH KITCHENETTE

\*SPACE LAYOUT NEXT PAGE



# Office & Warehouse Space | For Lease Eastlake Commerce Park

821 & 825 Kuhn Drive,  
Chula Vista CA 91914



IRE DEVELOPMENT

## CONTACT:

Zachary Vogt  
(619) 904-0424  
zach@iredevelopment.com  
Lic. 02167776

All information furnished regarding property for sale, lease or financing is from sources we deem in our sole opinion to be reliable. No representation is made as to the accuracy thereof and is submitted subject to omissions, errors, change of leasing price, or other conditions prior to sale, lease or financing, or withdraw without notice.