

# 15 COURT SQUARE

BOSTON, MA



## DOWNTOWN CROSSING RETAIL SPACES FOR LEASE

**CBRE**

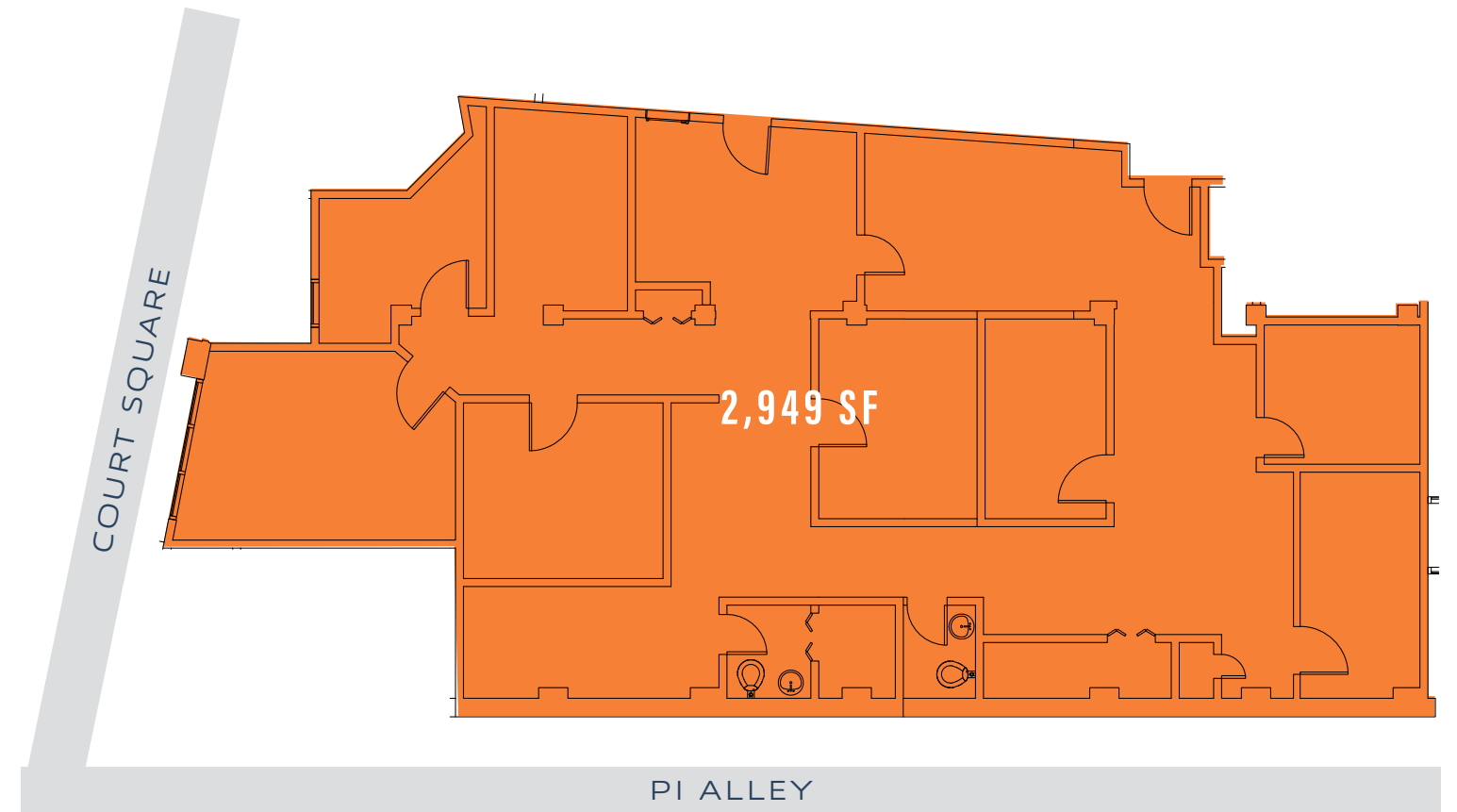
| **KS**Partners



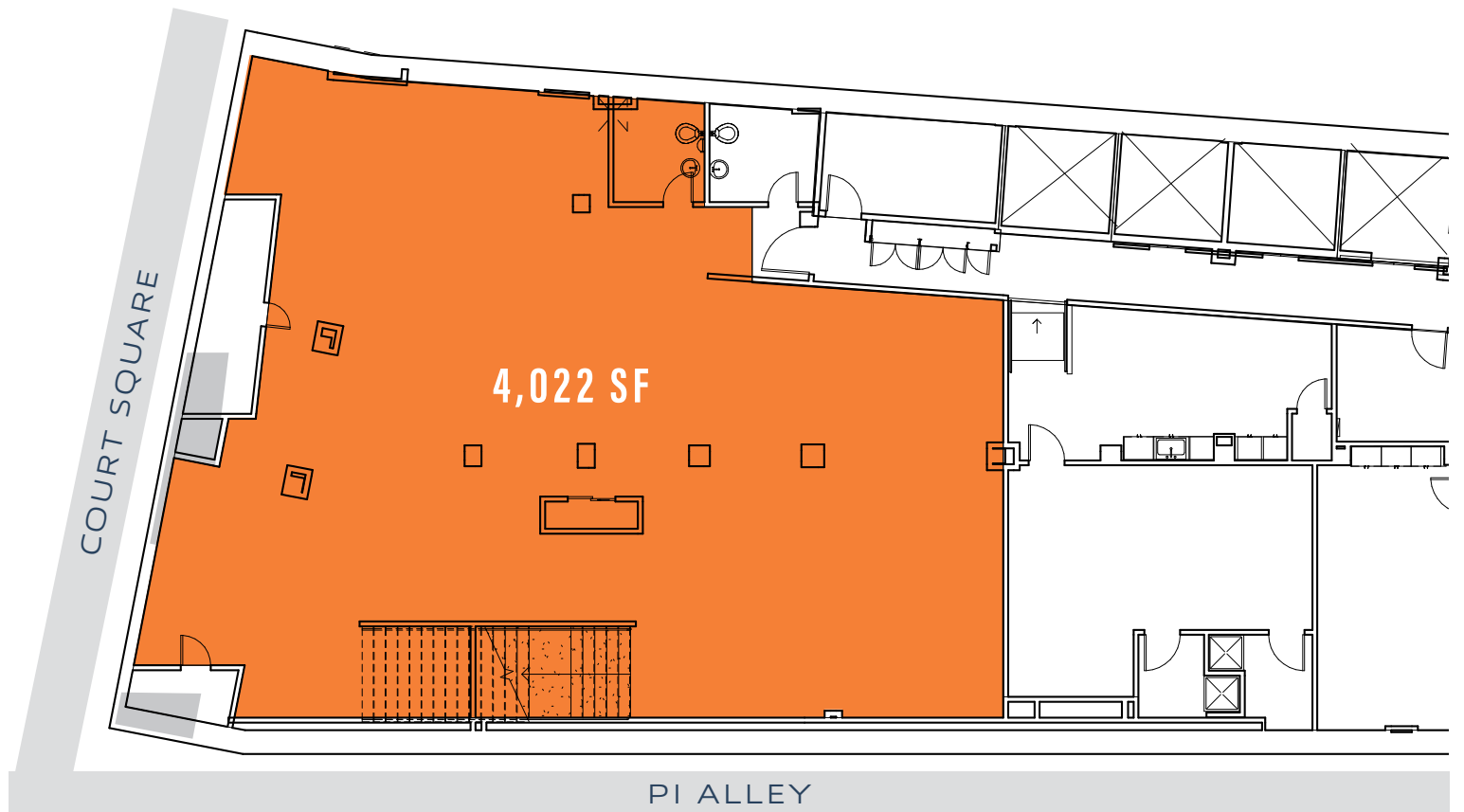
# 15 COURT SQUARE BOSTON, MA



## STREET LEVEL FLOOR PLAN



## LOWER LEVEL FLOOR PLAN



## PROPERTY FEATURES

- Available spaces:
  - 2,949 SF street level
  - 4,022 SF lower level
- Direct street access via grand staircase to lower level
- At base of 11-story office building, surrounded by strong daytime density with over **190,000 employees** within one mile
- Adjacent to public parking lot
- Retail and restaurant neighbors include Chipotle, Dig, HomeGoods, Marshalls, Old Navy, Primark, Starbucks, Sweetgreen and T.J.Maxx



15 COURT SQUARE  
BOSTON, MA

DOWNTOWN OFFICE MARKET

- 1

ONE BEACON  
(1,017,168 SF)
- 2

1-3 CENTER PLAZA  
(620,324 SF)
- 3

600 WASHINGTON STREET  
(252,918 SF)
- 4

LAFAYETTE CITY CENTER  
(62,000 SF)
- 5

ONE BOSTON PLACE  
(802,716 SF)
- 6

28 STATE STREET  
(570,040 SF)
- 7

101 ARCH STREET  
(406,631 SF)
- 8

185 DEVONSHIRE STREET  
(74,524 SF)
- 9

50 MILK STREET  
(290,759 SF)
- 10

CONGRESS SQUARE  
(365,000 SF)
- 11

60 STATE STREET  
(823,014 SF)
- 12

ONE LINCOLN STREET  
(1,045,106 SF)
- 13

125 SUMMER STREET  
(494,029 SF)
- 14

TWO FINANCIAL CENTER  
(217,763 SF)
- 15

ONE FINANCIAL CENTER  
(1,279,492 SF)
- 16

175 FEDERAL STREET  
(207,336 SF)
- 17

100 SUMMER STREET  
(1,057,475 SF)
- 18

160 FEDERAL STREET  
(354,252 SF)
- 19

75-101 FEDERAL STREET  
(813,195 SF)
- 20

100 FEDERAL STREET  
(1,396,193 SF)
- 21

50 POST OFFICE SQUARE  
(769,183 SF)
- 22

ONE FEDERAL STREET  
(1,120,577 SF)
- 23

ONE POST OFFICE SQUARE  
(765,296 SF)
- 24

10 POST OFFICE SQUARE  
(185,664 SF)
- 25

40 BROAD STREET  
(291,000 SF)
- 26

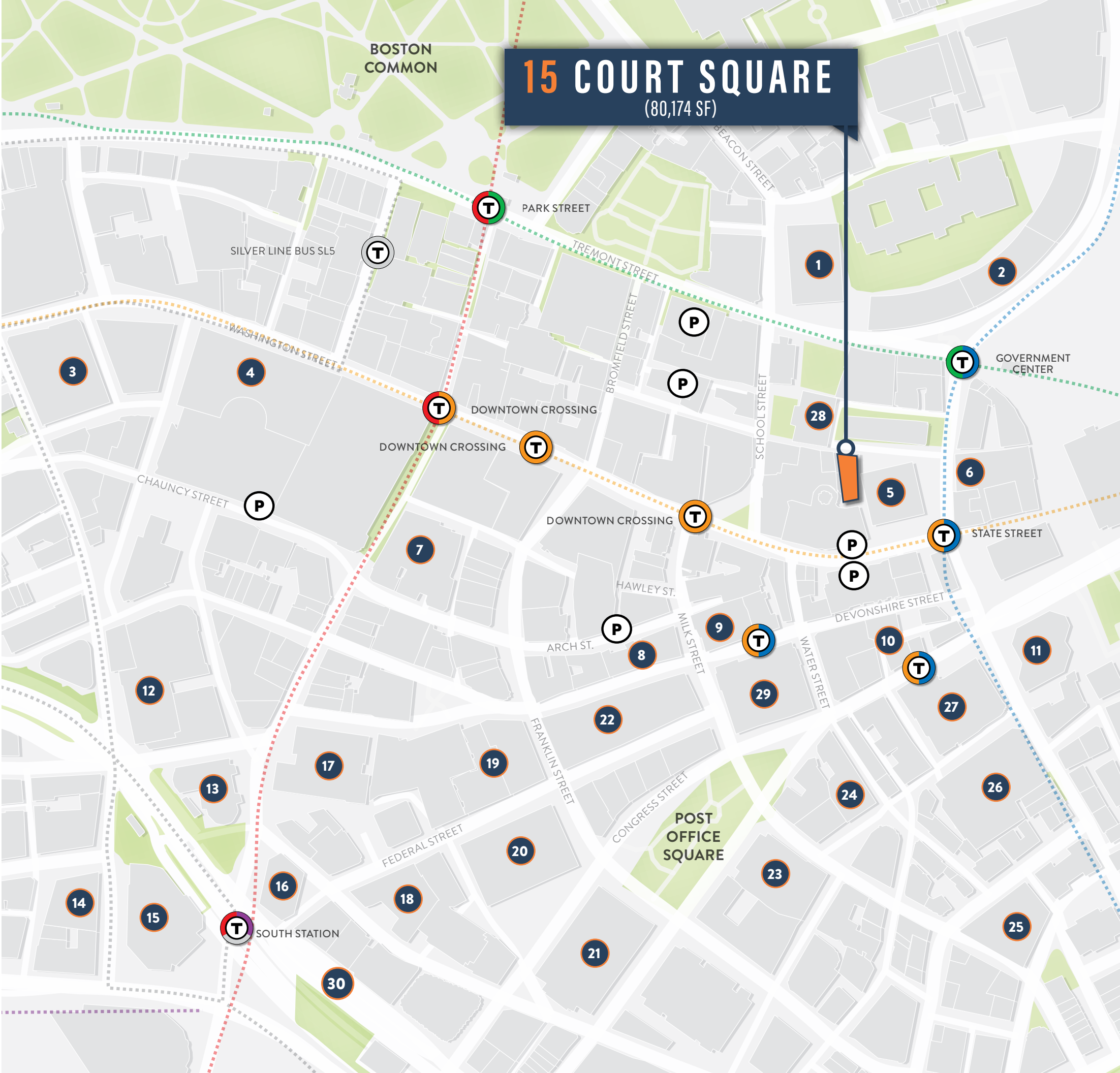
75 STATE STREET  
(813,261 SF)
- 27

EXCHANGE PLACE  
(1,234,434 SF)
- 28

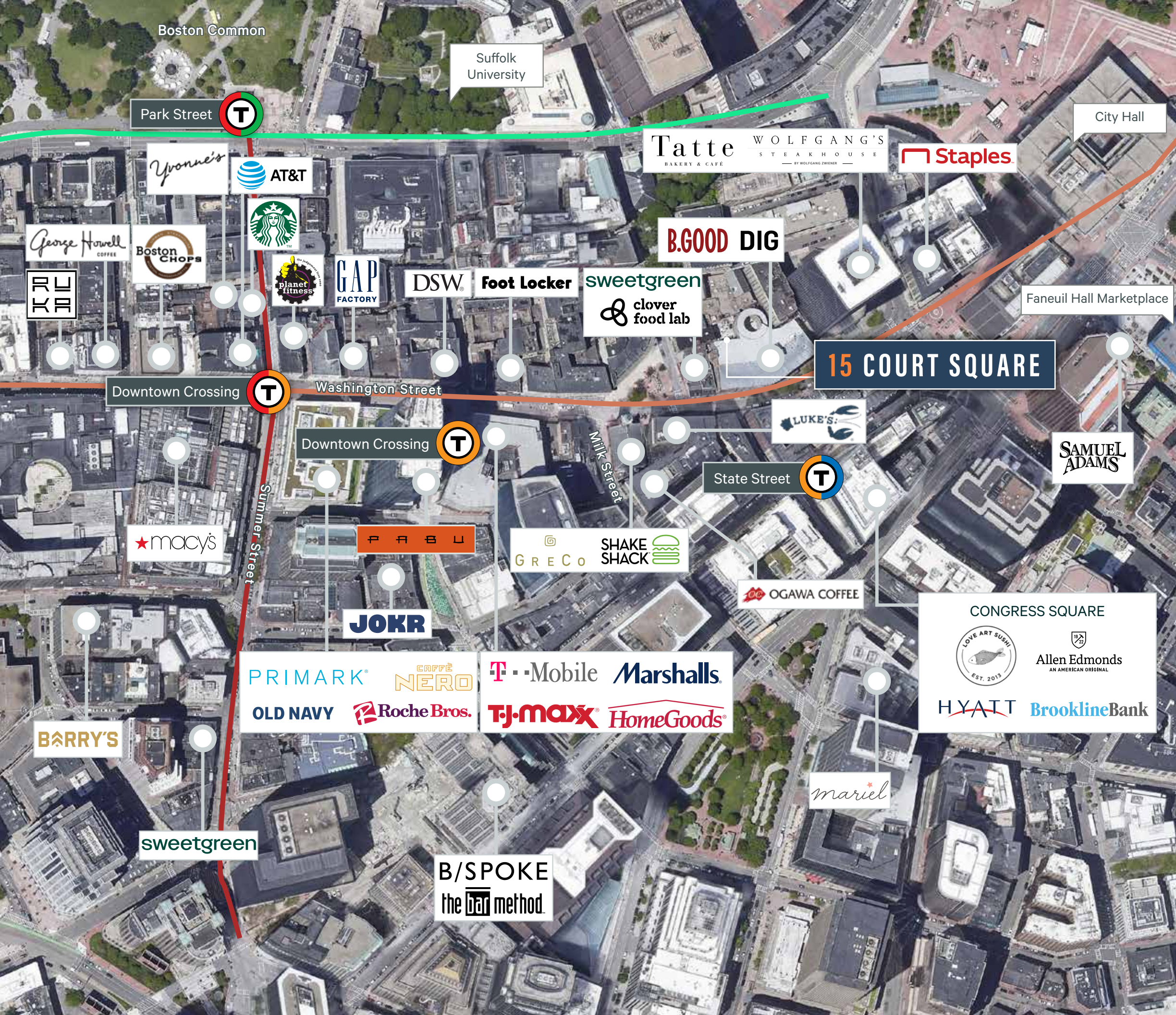
45 SCHOOL STREET  
(100,000 SF)
- 29

5 POST OFFICE SQUARE  
(602,799 SF)
- 30

99 HIGH STREET  
(731,204 SF)







**15 COURT SQUARE**  
BOSTON, MA

**DOWNTOWN CROSSING  
COMMERCIAL MARKET  
DEMOGRAPHICS**

**1,800**  
HOTEL ROOMS



**190,915**  
DAYTIME POPULATION  
WITHIN 1 MILE OF  
15 COURT SQUARE



**36 MSF**  
OFFICE SPACE



**14,000**  
COLLEGE STUDENTS



**\$166,620**  
HOUSEHOLD INCOME  
WITHIN 1 MILE OF  
15 COURT SQUARE







## FOR MORE INFORMATION

### NICOLE NIELSEN

+1 617 912 6879

[nicole.nielsen@cbre.com](mailto:nicole.nielsen@cbre.com)

### ALDEN BUSH

+1 857 264 4409

[alden.bush@cbre.com](mailto:alden.bush@cbre.com)

© 2022 CBRE, Inc. All rights reserved. This information has been obtained from sources believed reliable, but has not been verified for accuracy or completeness. You should conduct a careful, independent investigation of the property and verify all information. Any reliance on this information is solely at your own risk.

CBRE and the CBRE logo are service marks of CBRE, Inc. All other marks displayed on this document are the property of their respective owners. Photos herein are the property of their respective owners. Use of these images without the express written consent of the owner is prohibited.

**CBRE**

**KSPartners**