

29201 TELEGRAPH RD., SOUTHFIELD, MI



NOW LEASING MEDICAL & OFFICE SPACE

BUILDING HIGHLIGHTS

- ▣ Suitable for medical and office suites
- ▣ Easy access to highways, I-696, Northwestern and Lodge
- ▣ Brand New Elevators
- ▣ On Site Banking
- ▣ On Site Café and Conference Center
- ▣ Drive-thru Starbucks
- ▣ Medical Modalities include: Physical Therapy, Sleep Center, Diagnostic Imaging Lab
- ▣ Digital Tenant Directory
- ▣ Updated Common Area Corridors
- ▣ Monument Signage
- ▣ ADA Accessible
- ▣ On-Site management
- ▣ Card key access

FOR MORE INFORMATION PLEASE CONTACT

ADAM STEUER asteuer@versacos.com
www.versacos.com

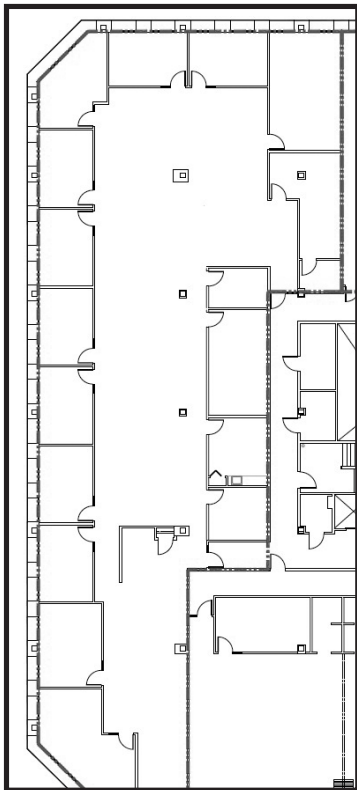
248.996.1081



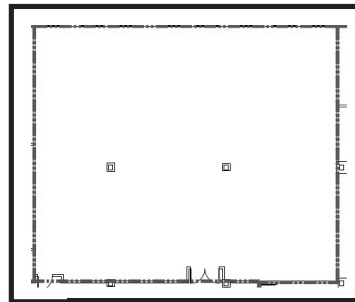
RETAIL | OFFICE | MEDICAL | MIXED USE

AVAILABLE SPACES - 29201 TELEGRAPH

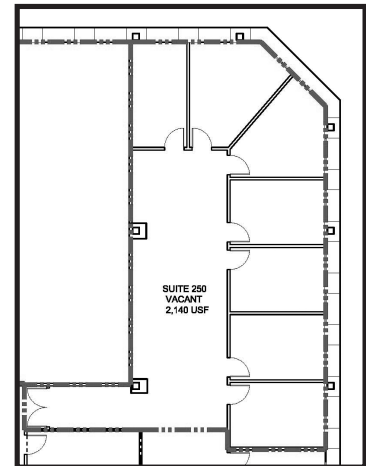
2ND FLOOR



SUITE	RSF	CONTIGIOUS RSF
200	7881	13936

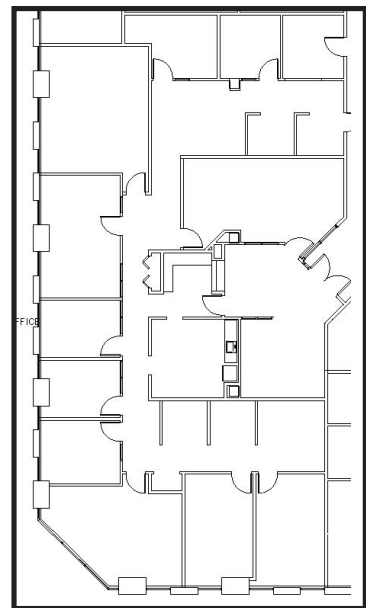


SUITE	RSF	CONTIGIOUS RSF
260	3915	13936



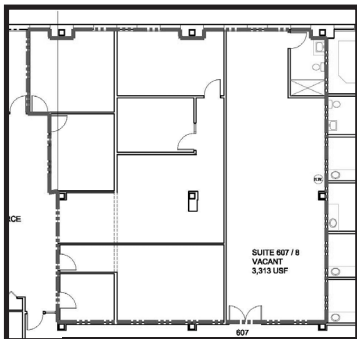
SUITE	RSF	CONTIGIOUS RSF
250	2140	13936

4TH FLOOR

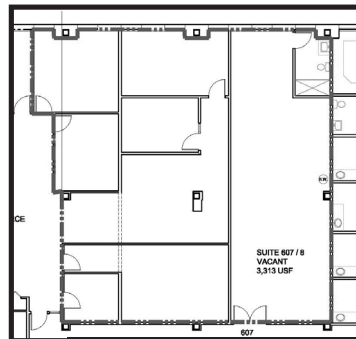


SUITE	RSF
450	4763

6TH FLOOR



SUITE	RSF	CONTIGIOUS RSF
607	1178	3313



SUITE	RSF	CONTIGIOUS RSF
608	2135	3313

FOR MORE INFORMATION PLEASE CONTACT

ADAM STEUER asteuer@versacos.com
www.versacos.com

248.996.1081



RETAIL | OFFICE | MEDICAL | MIXED USE