

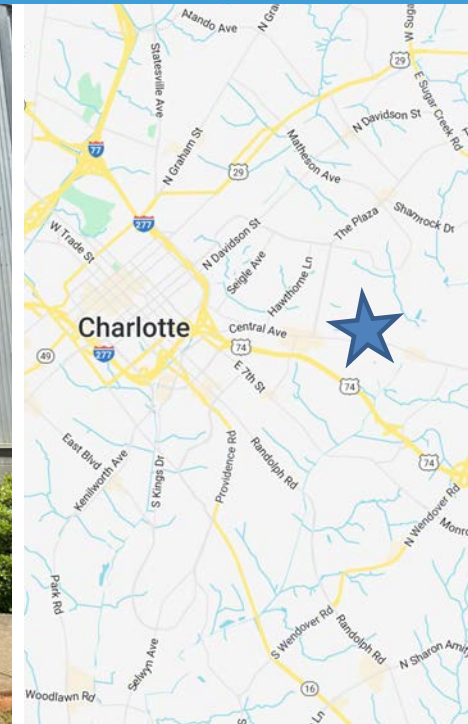
STEELHAUS COMMERCIAL CONDOS

1600 FULTON AVENUE, UNIT 140, CHARLOTTE, NC 28205

FOR SALE
OR LEASE

NS New South
Properties
NEWSOUTHPROP.COM

LOFT-STYLE OFFICE CONDO AVAILABLE



PROPERTY HIGHLIGHTS

- Loft-style office for sale or lease
- 3 offices, reception, kitchen and bullpen
- Newly renovated with stained concrete floors and paint
- Steelhaus, a 15,000 sq ft mixed-use development, offers 12 residential lofts as well as 4 commercial spaces located on the ground floor
- Located in the desirable Plaza Midwood neighborhood, just 3 miles west of Uptown Charlotte

- Only minutes walking distance to Pinhouse Brewery, Resident Culture, Harris Teeter, and many other restaurants, shops and bars!
- **Call Brokers for Pricing**

DEMOGRAPHICS (2025)



POPULATION

1 Mile: 16,557
3 Miles: 136,753
5 Miles: 327,594



AVG. HH INCOME

1 Mile: \$154,404
3 Miles: \$147,403
5 Miles: \$139,721



DAYTIME EMPLOYEES

1 Mile: 4,284
3 Miles: 109,111
5 Miles: 202,516

BROKER CONTACT

HOLLY ALEXANDER
704.927.2884
halexander@newsouthprop.com

KENNY SMITH
704.927.2882
ksmith@newsouthprop.com



"The information contained herein was obtained from sources believed reliable, however, no guarantees, warranties, or representations have been made as to the completeness or accuracy thereof. No liability assumed for error or omissions."

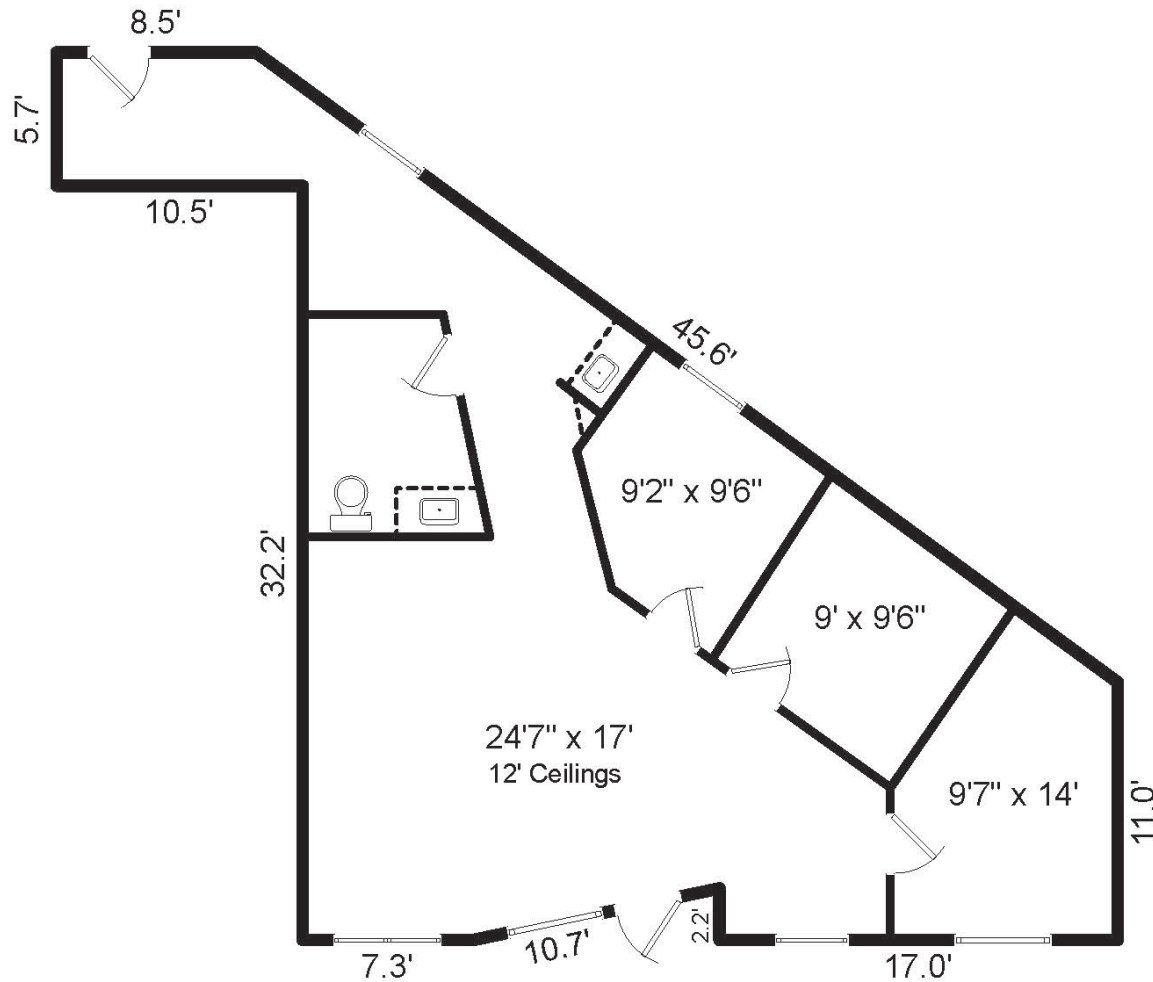
STEELHAUS COMMERCIAL CONDOS

1600 FULTON AVENUE, UNIT 140, CHARLOTTE, NC 28205

EXISTING
FLOOR PLAN

NS New South
Properties
NEWSOUTHPROP.COM

LOFT-STYLE OFFICE CONDO AVAILABLE



Gross Building Area
872.3 sf

"The information contained herein was obtained from sources believed reliable, however, no guarantees, warranties, or representations have been made as to the completeness or accuracy thereof. No liability assumed for error or omissions."



HOLLY ALEXANDER | 704.927.2884 | halexander@newsouthprop.com
KENNY SMITH | 704.927.2882 | ksmith@newsouthprop.com

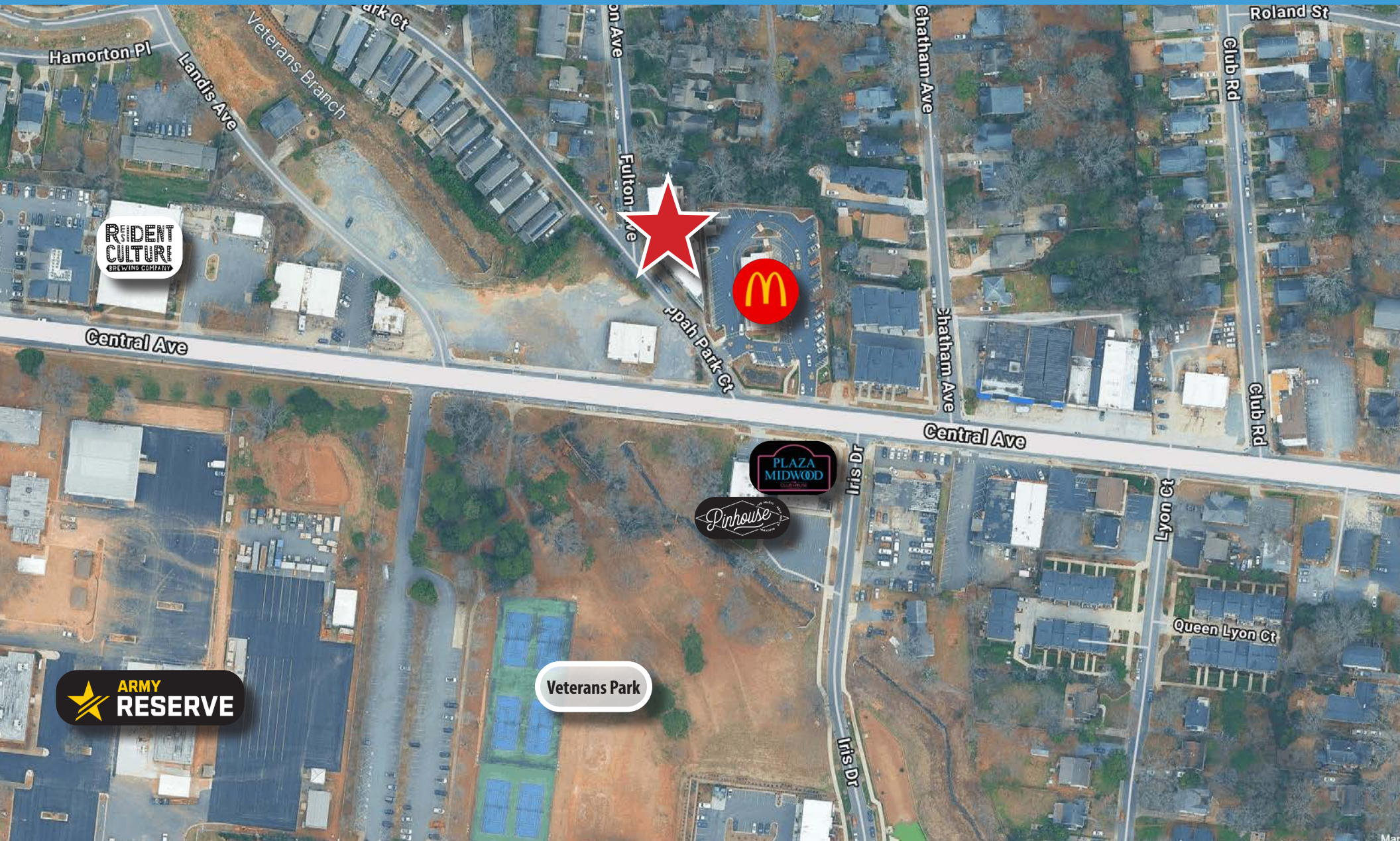
STEELHAUS COMMERCIAL CONDOS

1600 FULTON AVENUE, UNIT 140, CHARLOTTE, NC 28205

SITE AERIAL

NS New South
Properties
NEWSOUTHPROP.COM

LOFT-STYLE OFFICE CONDO AVAILABLE



"The information contained herein was obtained from sources believed reliable, however, no guarantees, warranties, or representations have been made as to the completeness or accuracy thereof. No liability assumed for error or omissions."



HOLLY ALEXANDER | 704.927.2884 | halexander@newsouthprop.com
KENNY SMITH | 704.927.2882 | ksmith@newsouthprop.com

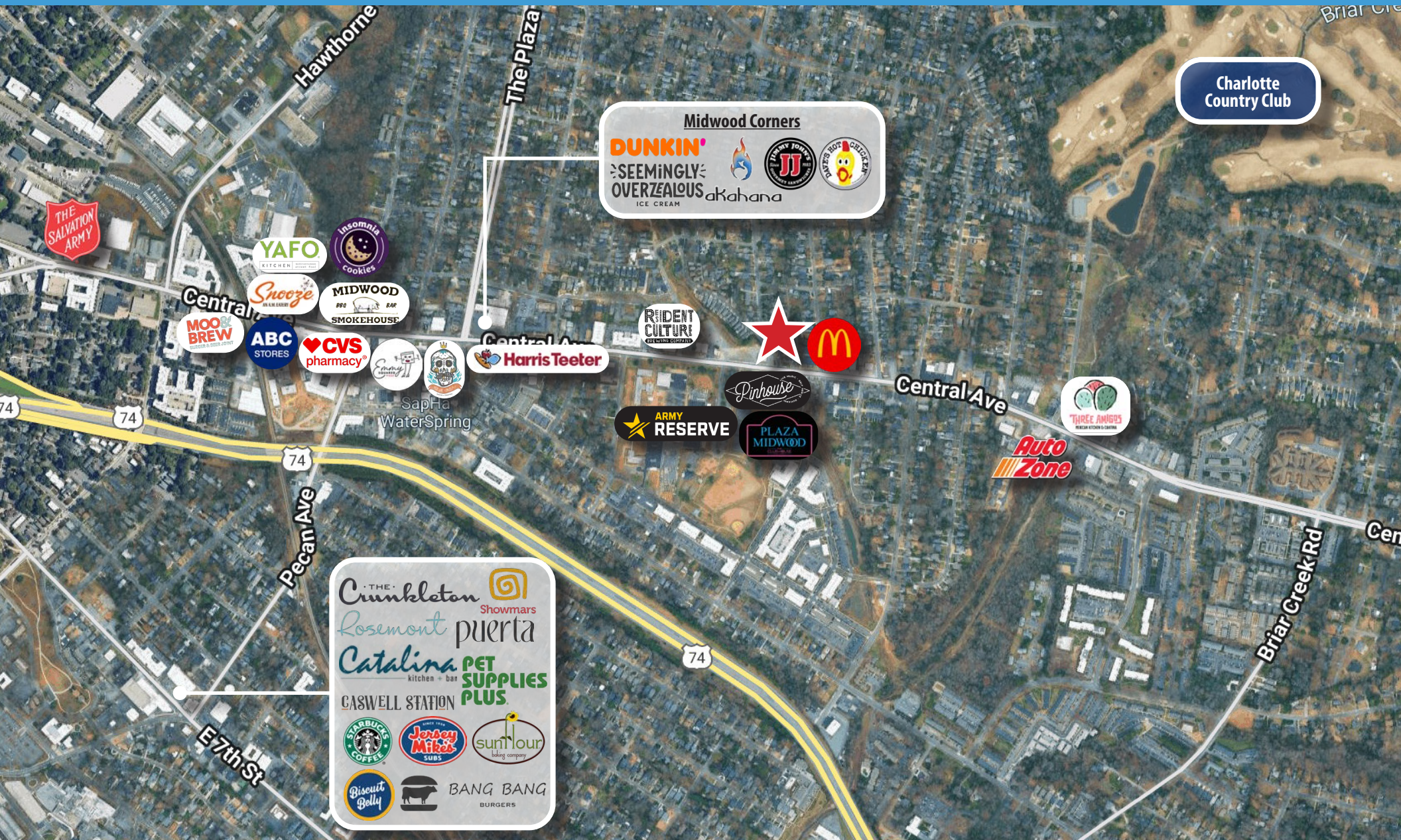
STEELHAUS COMMERCIAL CONDOS

1600 FULTON AVENUE, UNIT 140, CHARLOTTE, NC 28205

CORRIDOR
AERIAL

NS New South
Properties
NEWSOUTHPROP.COM

LOFT-STYLE OFFICE CONDO AVAILABLE



"The information contained herein was obtained from sources believed reliable, however, no guarantees, warranties, or representations have been made as to the completeness or accuracy thereof. No liability assumed for error or omissions."



HOLLY ALEXANDER | 704.927.2884 | halexander@newsouthprop.com
KENNY SMITH | 704.927.2882 | ksmith@newsouthprop.com

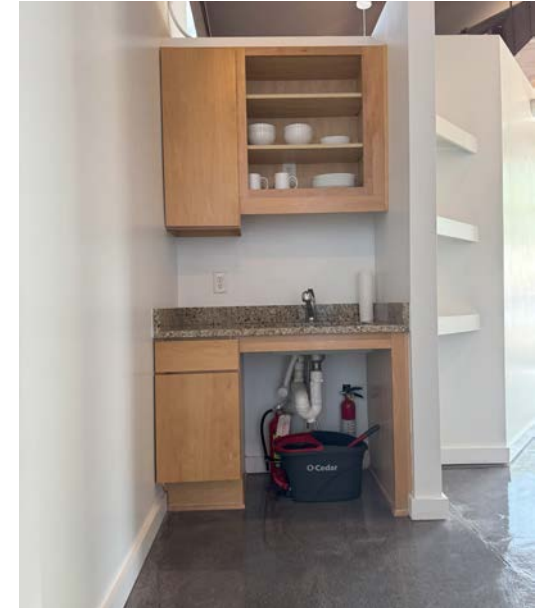
STEELHAUS COMMERCIAL CONDOS

1600 FULTON AVENUE, UNIT 140, CHARLOTTE, NC 28205

PHOTOS

NS New South
Properties
NEWSOUTHPROP.COM

LOFT-STYLE OFFICE CONDO AVAILABLE



"The information contained herein was obtained from sources believed reliable, however, no guarantees, warranties, or representations have been made as to the completeness or accuracy thereof. No liability assumed for error or omissions."



HOLLY ALEXANDER | 704.927.2884 | halexander@newsouthprop.com
KENNY SMITH | 704.927.2882 | ksmith@newsouthprop.com

STEELHAUS COMMERCIAL CONDOS

1600 FULTON AVENUE, UNIT 140, CHARLOTTE, NC 28205

LOCATION
OVERVIEW

NS New South
Properties
NEWSOUTHPROP.COM

LOFT-STYLE OFFICE CONDO AVAILABLE



PLAZA MIDWOOD is one of Charlotte's most vibrant neighborhoods—perfect for businesses seeking energy, foot traffic, and community engagement. Known for its popular bars, highly rated restaurants, and eclectic charm, it attracts young professionals and creatives all week long.

With a walkable layout, nearby parks, and staples like Harris Teeter, it's a lively, connected hub where local businesses thrive. Plaza Midwood offers an ideal setting for entrepreneurs, retailers, and hospitality concepts looking to thrive in one of Charlotte's most beloved communities.

"The information contained herein was obtained from sources believed reliable, however, no guarantees, warranties, or representations have been made as to the completeness or accuracy thereof. No liability assumed for error or omissions."



HOLLY ALEXANDER | 704.927.2884 | halexander@newsouthprop.com
KENNY SMITH | 704.927.2882 | ksmith@newsouthprop.com