



6534 SOUTH MAPLE AVENUE

TEMPE, ARIZONA 85283

2,700 Square Feet, Suite 101

\$1.25 Per Square Foot, Modified Gross

16' Clear Height

1 Grade Level Roll-Up Door

Fire Sprinklered

GID Zoning, City of Tempe

HVAC Offices, Evap Cooled Warehouse

Reception, 2 Private Offices, Restroom, & Warehouse



Chad Kirkorsky

Partner

480.330.2824

chad@citywidecre.com

Nick DePaul

Vice President

480.414.3818

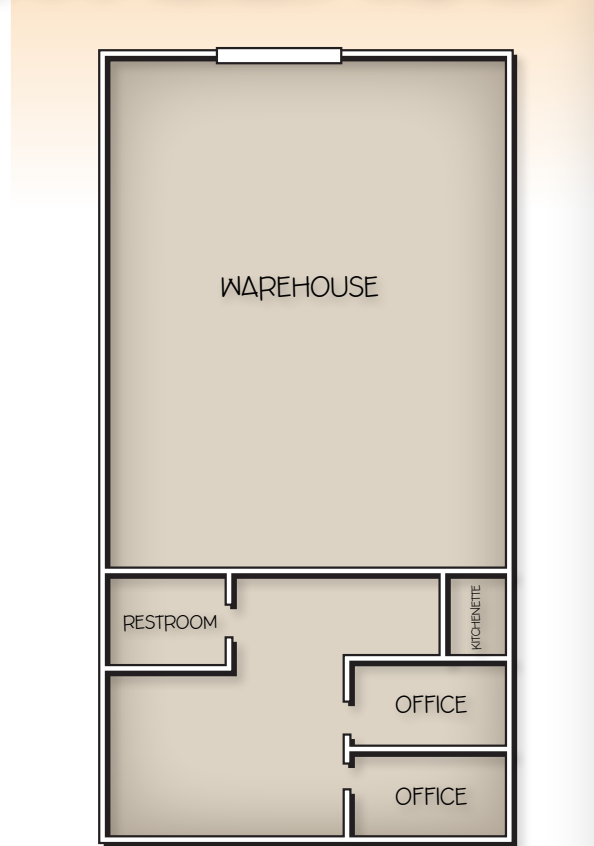
nick@citywidecre.com

Preston Brimhall

Sales & Leasing

602.619.9350

preston@citywidecre.com



Chad Kirkorsky
Partner
480.330.2824
chad@citywidecre.com

Nick DePaul
Vice President
480.414.3818
nick@citywidecre.com

Preston Brimhall
Sales & Leasing
602.619.9350
preston@citywidecre.com