

1502 N JEFFERSON/500-510 E LYON

Milwaukee, WI 53202

Anderson
Commercial Group

FOR SALE | REDEVELOPMENT OPPORTUNITY IN LOWER EAST SIDE



OFFERING SUMMARY

Zoning:	RT 4
Building Size:	+/- 2,000 SF
Building Configuration:	2 BDR, 1/2 Bath (Each Unit)
Total Lot Size:	+/- 0.1 Acres
1502 N Jefferson St	+/- 0.03 Acres
500-510 E Lyon St	+/- 0.07 Acres
Tax / APN #:	3921778100, 3921780000
Year Built:	1900
Current Taxes:	\$8,234.73
Sale Price:	\$399,000

PATRICK MCGLINN

Senior Vice President
414.858.5218
pmcglinn@acgwi.com

STEVE ANDERSON

President/CEO
414.858.5200
sanderson@acgwi.com

PROPERTY HIGHLIGHTS

- Redevelopment potential - hard corner lot
- Premier location across from East Pointe Commons
- Near Downtown Milwaukee, Fiserv Forum, MSOE, and Water St
- Residence was built as a two-family home; used as a single family with no rent history
- Ample off street parking

DEMOGRAPHICS

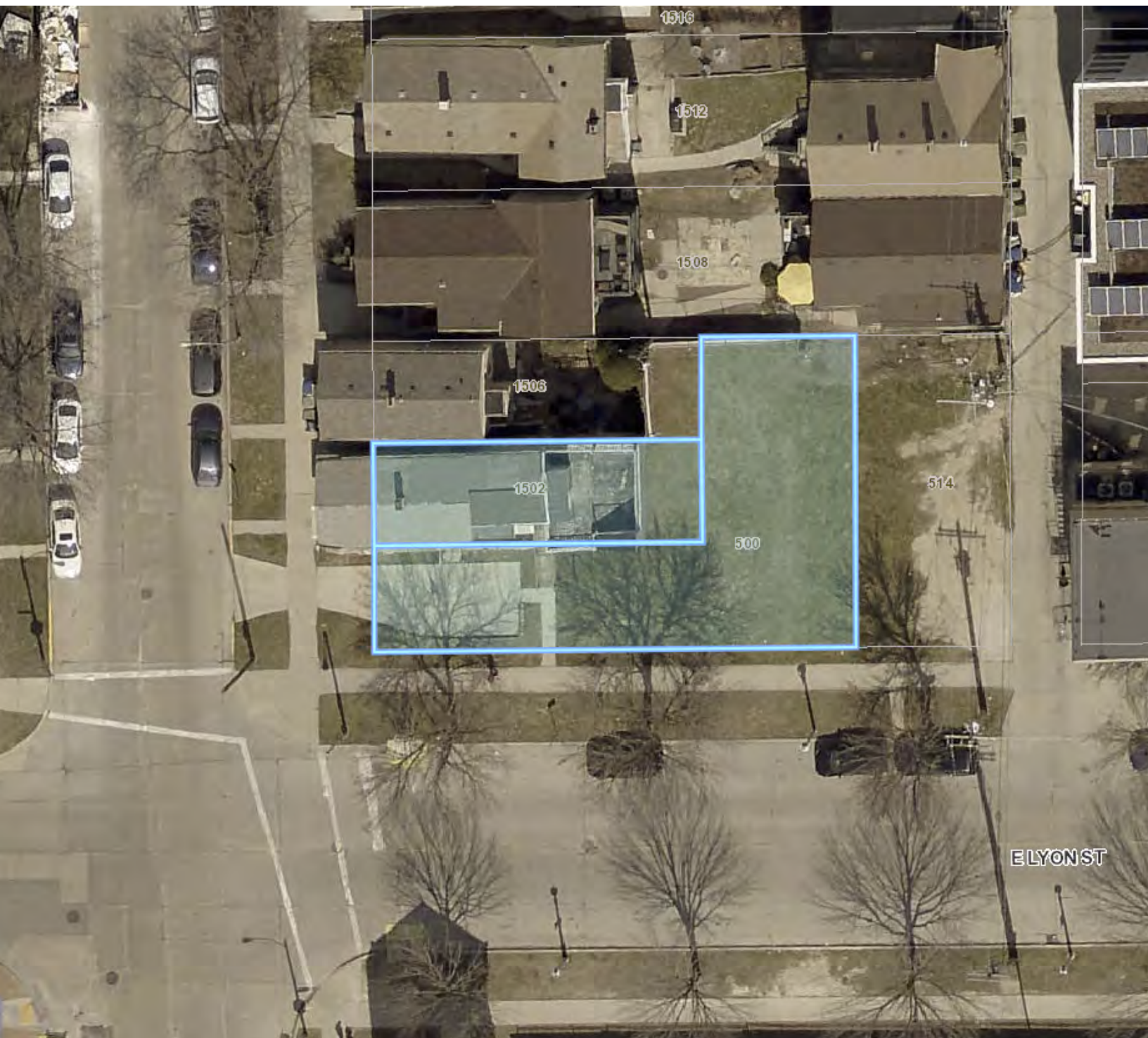
	1 MILE	2 MILES	3 MILES
Total Households	20,921	49,042	86,652
Total Population	32,061	89,580	176,125
Average HH Income	\$62,652	\$56,276	\$50,099

1502 N JEFFERSON/500-510 E LYON

Milwaukee, WI 53202

Anderson
Commercial Group

GIS MAP | REDEVELOPMENT OPPORTUNITY IN LOWER EAST SIDE



PATRICK MCGLINN

Senior Vice President
414.858.5218
pmcglinn@acgwi.com

STEVE ANDERSON

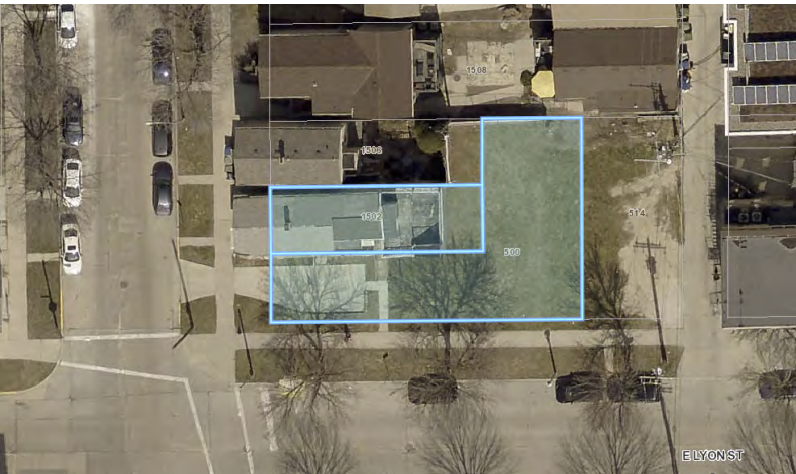
President/CEO
414.858.5200
sanderson@acgwi.com

1502 N JEFFERSON/500-510 E LYON

Milwaukee, WI 53202



ADDITIONAL PHOTOS | REDEVELOPMENT OPPORTUNITY IN LOWER EAST SIDE



PATRICK MCGLINN
Senior Vice President
414.858.5218
pmcglinn@acgwi.com

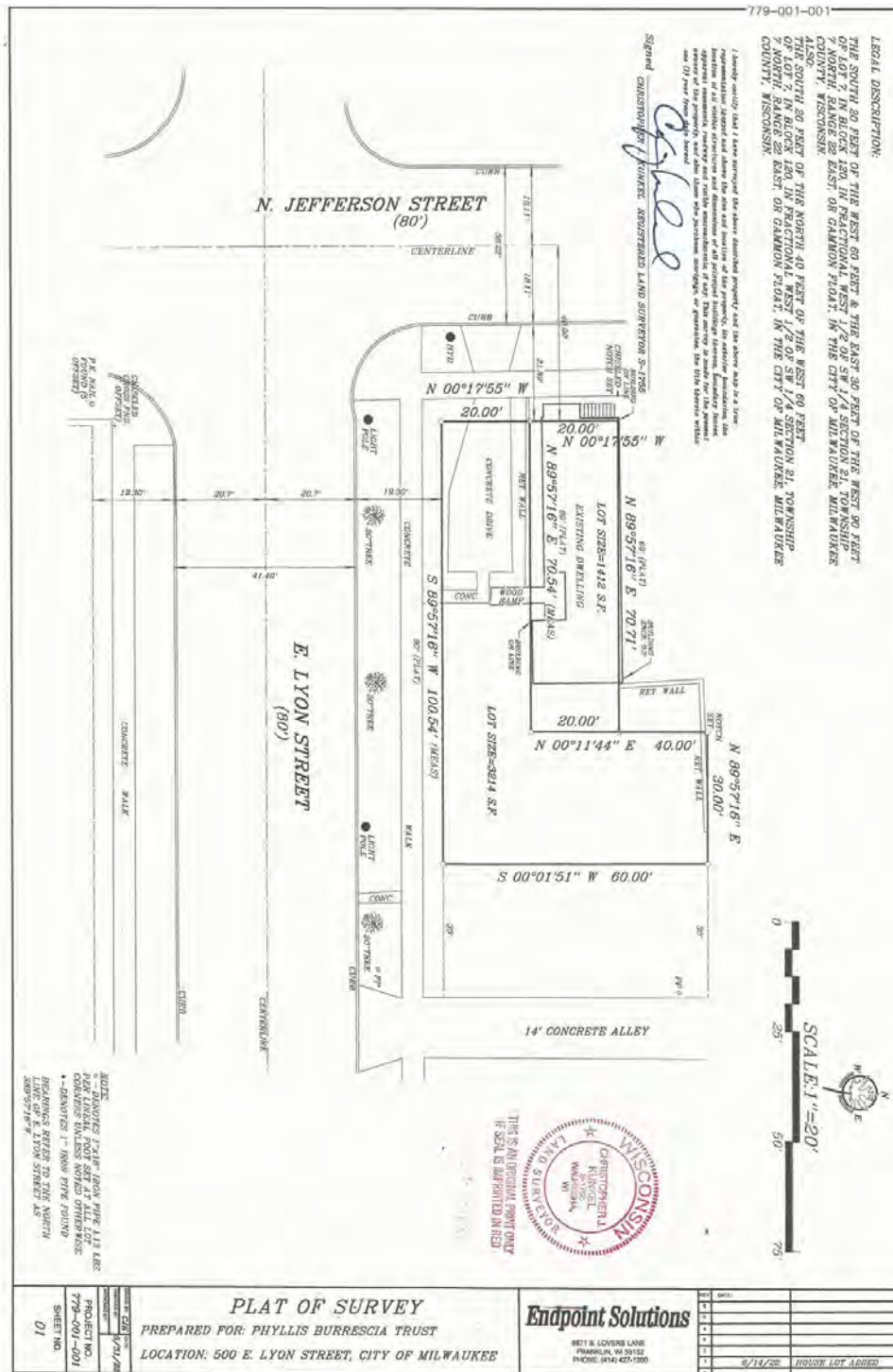
STEVE ANDERSON
President/CEO
414.858.5200
sanderson@acgwi.com

1502 N JEFFERSON/500-510 E LYON

Milwaukee, WI 53202



PLAT SURVEY | REDEVELOPMENT OPPORTUNITY IN LOWER EAST SIDE



PATRICK MCGLINN
 Senior Vice President
 414.858.5218
 pmcglinn@acgwi.com

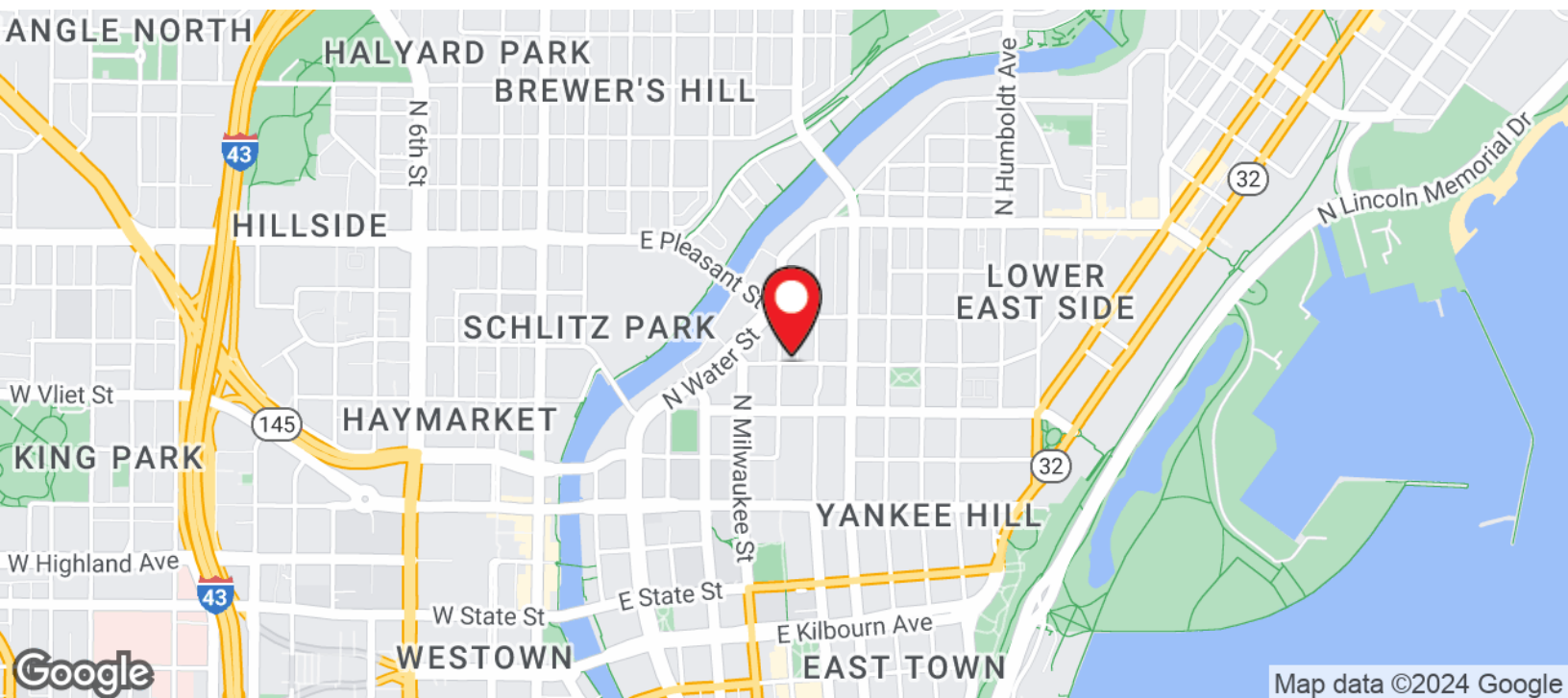
STEVE ANDERSON
 President/CEO
 414.858.5200
 sanderson@acgwi.com

1502 N JEFFERSON/500-510 E LYON

Milwaukee, WI 53202

Anderson
Commercial Group

LOCATION MAP | REDEVELOPMENT OPPORTUNITY IN LOWER EAST SIDE



PATRICK MCGLINN
Senior Vice President
414.858.5218
pmcglinn@acgwi.com

STEVE ANDERSON
President/CEO
414.858.5200
sanderson@acgwi.com

DISCLOSURE TO NON-RESIDENTIAL CUSTOMERS

1 Prior to negotiating on your behalf the brokerage firm, or an agent associated with the firm, must provide you the
2 following disclosure statement:

3 **DISCLOSURE TO CUSTOMERS** You are a customer of the brokerage firm (hereinafter Firm). The Firm is either an agent
4 of another party in the transaction or a subagent of another firm that is the agent of another party in the transaction. A
5 broker or a salesperson acting on behalf of the Firm may provide brokerage services to you. Whenever the Firm is
6 providing brokerage services to you, the Firm and its brokers and salespersons (hereinafter Agents) owe you, the
7 customer, the following duties:

- 8 (a) The duty to provide brokerage services to you fairly and honestly.
 - 9 (b) The duty to exercise reasonable skill and care in providing brokerage services to you.
 - 10 (c) The duty to provide you with accurate information about market conditions within a reasonable time if you request
11 it, unless disclosure of the information is prohibited by law.
 - 12 (d) The duty to disclose to you in writing certain Material Adverse Facts about a property, unless disclosure of the
13 information is prohibited by law (see lines 42-51).
 - 14 (e) The duty to protect your confidentiality. Unless the law requires it, the Firm and its Agents will not disclose your
15 confidential information or the confidential information of other parties (see lines 23-41).
 - 16 (f) The duty to safeguard trust funds and other property held by the Firm or its Agents.
 - 17 (g) The duty, when negotiating, to present contract proposals in an objective and unbiased manner and disclose the
18 advantages and disadvantages of the proposals.
- 19 Please review this information carefully. An Agent of the Firm can answer your questions about brokerage services,
20 but if you need legal advice, tax advice, or a professional home inspection, contact an attorney, tax advisor, or home
21 inspector. This disclosure is required by section 452.135 of the Wisconsin statutes and is for information only. It is a
22 plain-language summary of the duties owed to a customer under section 452.133(1) of the Wisconsin statutes.

23 **CONFIDENTIALITY NOTICE TO CUSTOMERS** The Firm and its Agents will keep confidential any information given to the
24 Firm or its Agents in confidence, or any information obtained by the Firm and its Agents that a reasonable person
25 would want to be kept confidential, unless the information must be disclosed by law or you authorize the Firm to
26 disclose particular information. The Firm and its Agents shall continue to keep the information confidential after the
27 Firm is no longer providing brokerage services to you.

- 28 The following information is required to be disclosed by law:
- 29 1. Material Adverse Facts, as defined in Wis. Stat. § 452.01(5g) (see lines 42-51).
 - 30 2. Any facts known by the Firm or its Agents that contradict any information included in a written inspection
31 report on the property or real estate that is the subject of the transaction.

32 To ensure that the Firm and its Agents are aware of what specific information you consider confidential, you may
33 list that information below (see lines 35-41) or provide that information to the Firm or its Agents by other means. At a
34 later time, you may also provide the Firm or its Agents with other Information you consider to be confidential.

35 **CONFIDENTIAL INFORMATION:** _____
36 _____
37 _____

38 **NON-CONFIDENTIAL INFORMATION** (the following information may be disclosed by the Firm and its Agents): _____
39 _____
40 _____
41 _____ (Insert information you authorize to be disclosed, such as financial qualification information.)

42 **DEFINITION OF MATERIAL ADVERSE FACTS**
43 A "Material Adverse Fact" is defined in Wis. Stat. § 452.01(5g) as an Adverse Fact that a party indicates is of such
44 significance, or that is generally recognized by a competent licensee as being of such significance to a reasonable
45 party, that it affects or would affect the party's decision to enter into a contract or agreement concerning a transaction
46 or affects or would affect the party's decision about the terms of such a contract or agreement.

47 An "Adverse Fact" is defined in Wis. Stat. § 452.01(1e) as a condition or occurrence that a competent licensee
48 generally recognizes will significantly and adversely affect the value of the property, significantly reduce the structural
49 integrity of improvements to real estate, or present a significant health risk to occupants of the property; or information
50 that indicates that a party to a transaction is not able to or does not intend to meet his or her obligations under a
51 contract or agreement made concerning the transaction.

52 **NOTICE ABOUT SEX OFFENDER REGISTRY** You may obtain information about the sex offender registry and persons
53 registered with the registry by contacting the Wisconsin Department of Corrections on the Internet at
54 <http://www.doc.wi.gov> or by telephone at 608-240-5830.