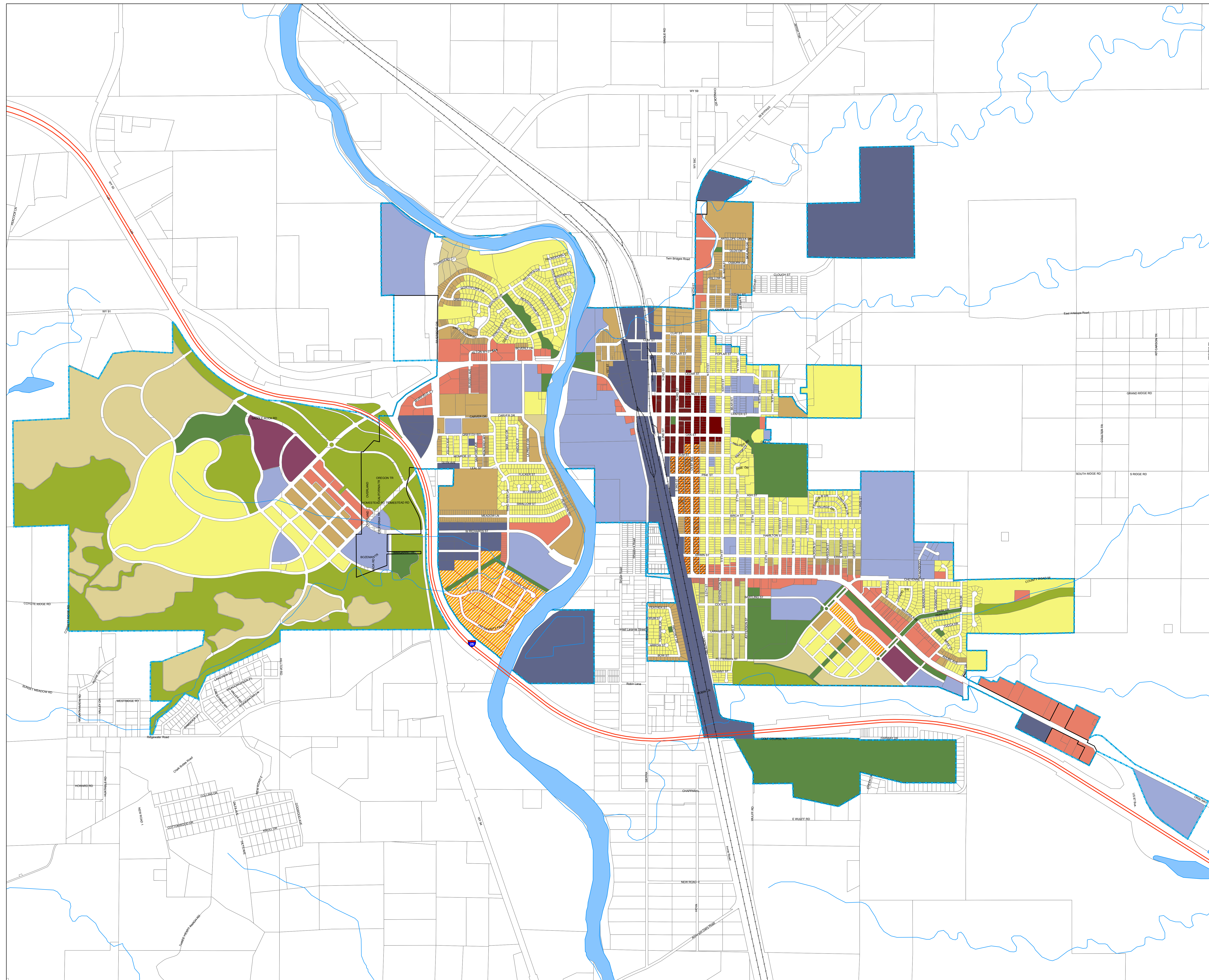




Future Land Use Map

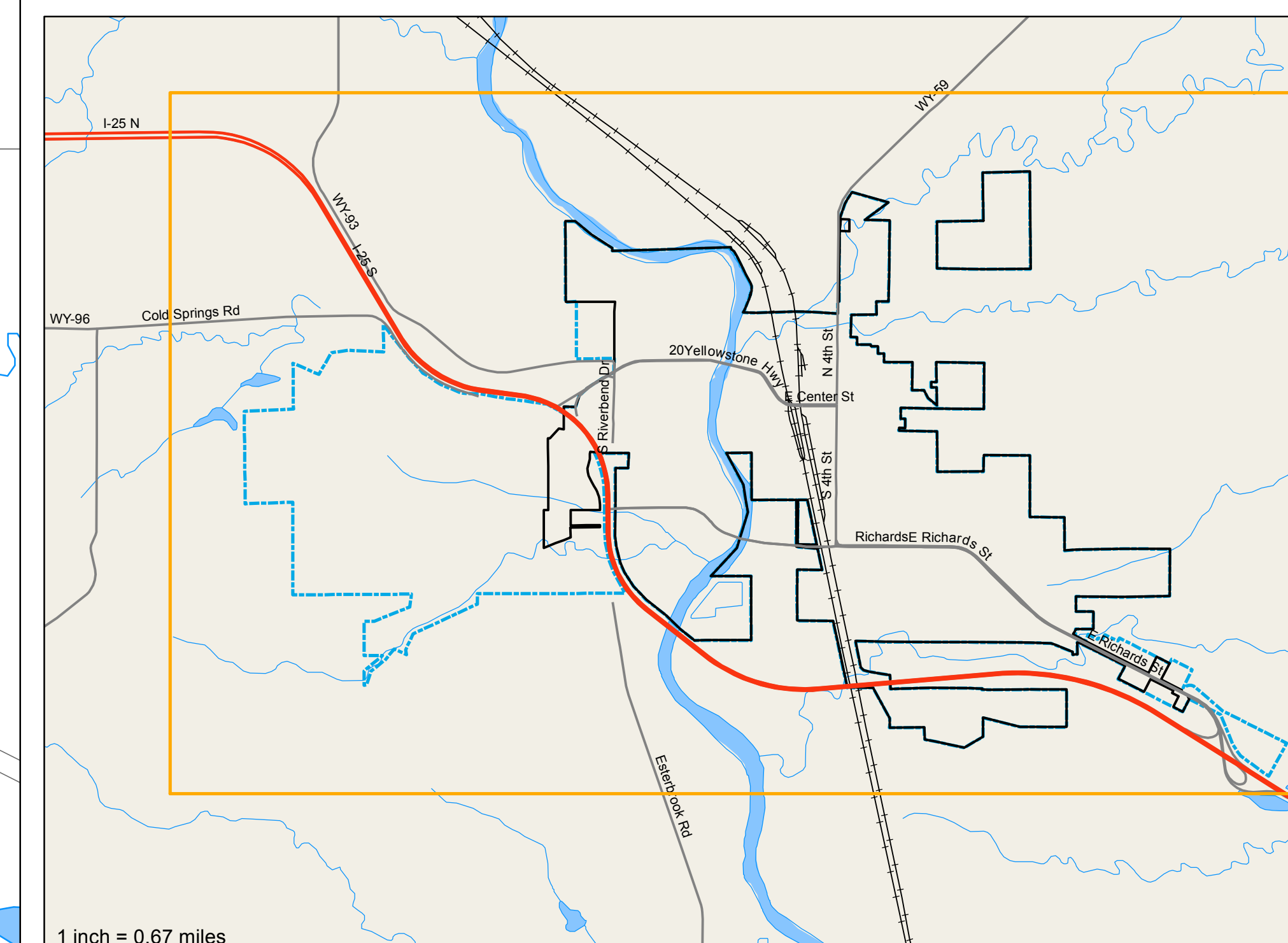


Legend

- City Limits
- Urban Growth Boundary
- Parcels
- Water

Future Land Use

- Park
- Open Space
- Civic
- Industrial
- Downtown Business
- Local Business/Office
- General Business
- Mixed Use
- Residential Mixed Use
- Residential
- Estate Residential
- Multi-Family Residential



Created by Clara Chaffin - Planner I
cchaffin@cityofdouglas.org
This product is for information purposes and may not have been prepared for or be suitable for legal, engineering, or surveying purposes. It does not represent an on-the-ground survey and represents only the approximate relative location of property boundaries.

City of Douglas
Community Development Department
101 N. Fourth Street
P.O. Box 1030
Douglas, WY 82633
(307) 358-2132 office
(307) 358-2133 fax
July 18, 2014

