

# THE VIEW

CASTLE ROCK • COLORADO



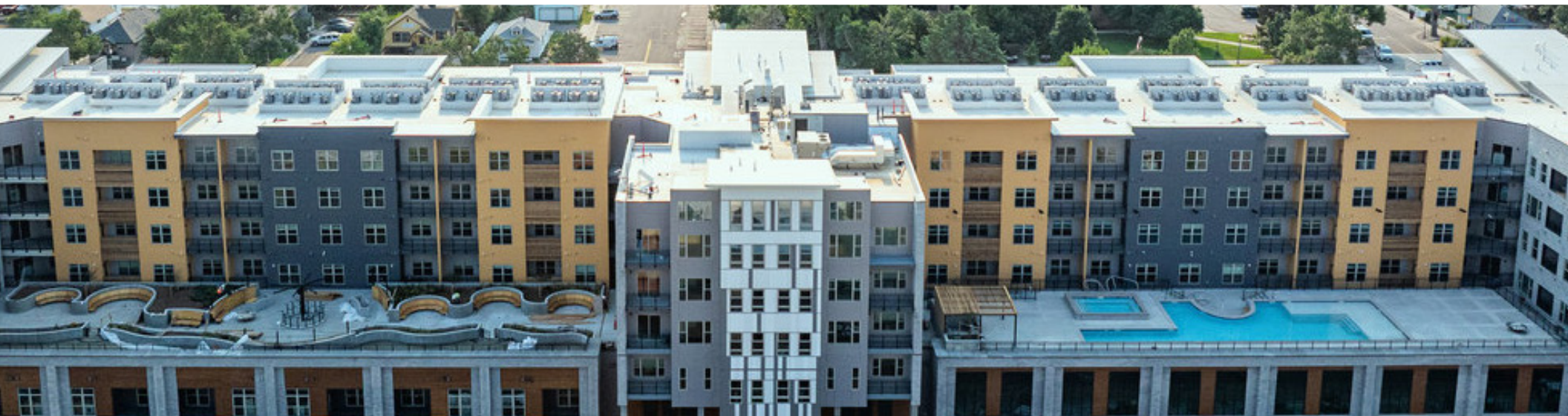
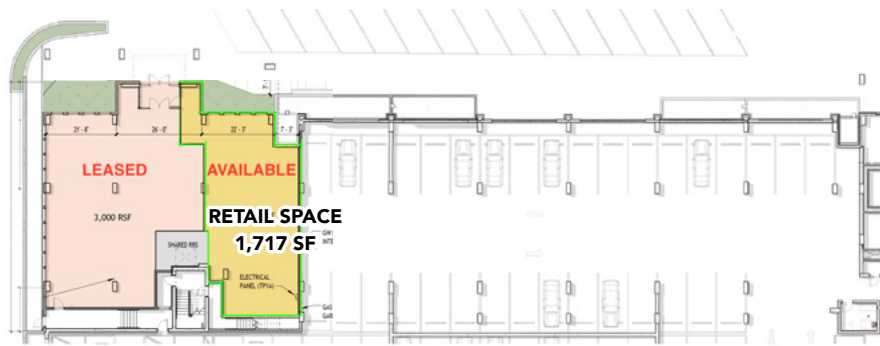
WATCH VIDEO

navpoint  
REAL ESTATE GROUP

THE **VIEW** is a redevelopment project that is a public-private partnership that includes the Town of Castle Rock, the Downtown Development Authority and Castle Rock Development. The 201,000 square foot, mixed-use development will also include a 399-space parking structure, which will provide 100 new spaces for visitors and patrons of downtown Castle Rock. The development is scheduled for completion in 2024. The six-story project is located at Sixth and Jerry Street.

## SPECULATIVE **FLOOR PLAN**

**GROUND FLOOR:** 1 Unit Available - 1,717 SF



# PROPERTY HIGHLIGHTS

GENEROUS TENANT IMPROVEMENT ALLOWANCE AVAILABLE

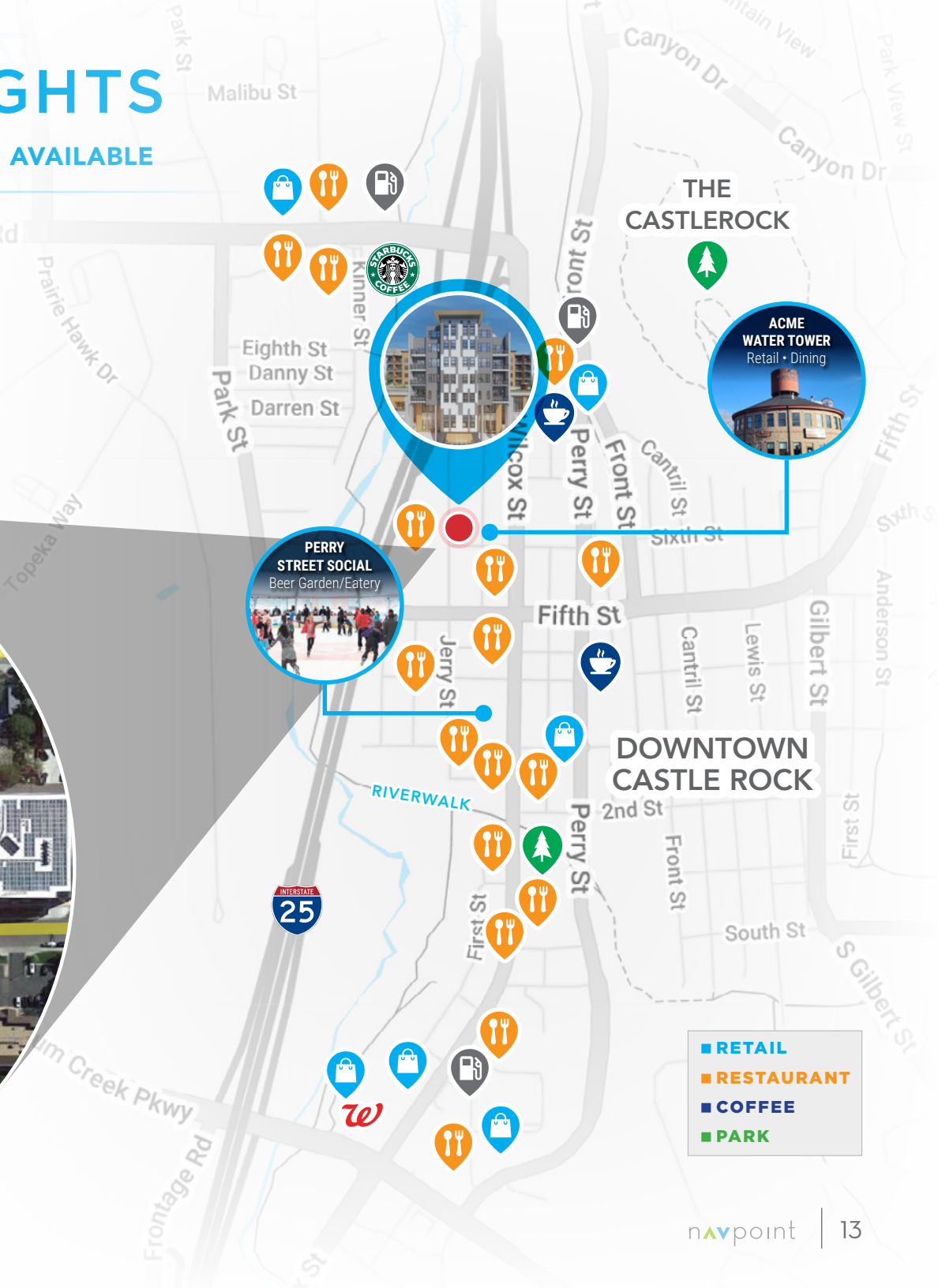
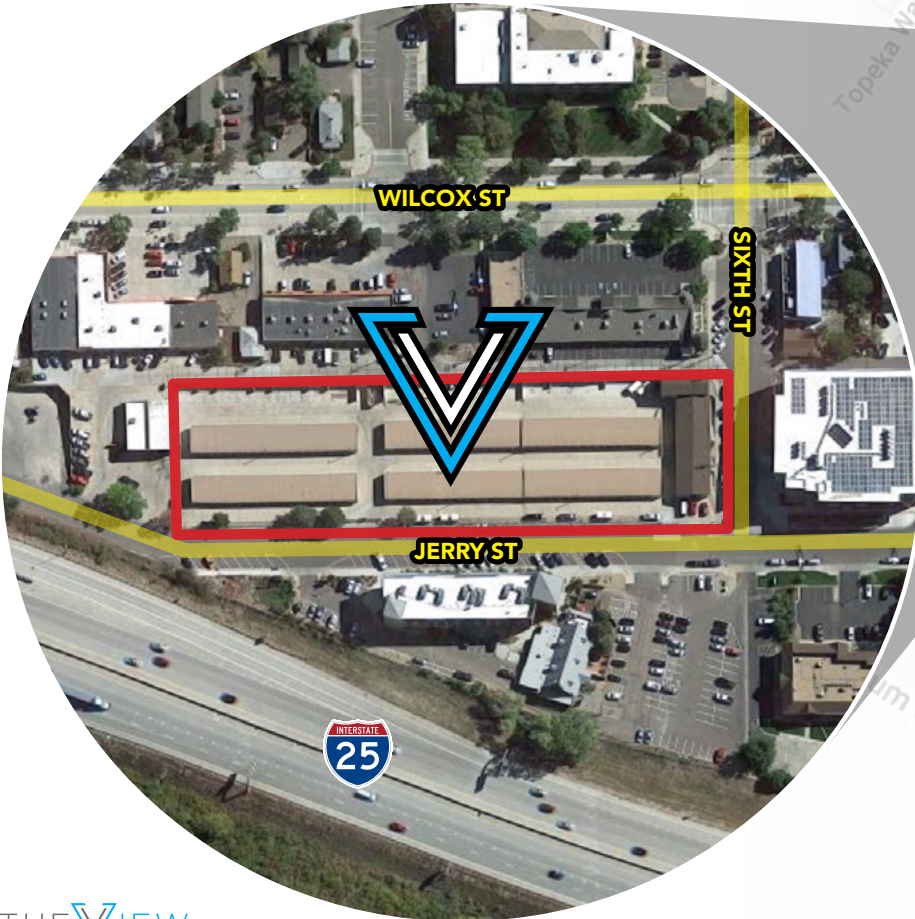
**ADDRESS** 610 Jerry St • Castle Rock, CO. 80104

**COUNTY** Douglas

**PARCELS** 2505-112-02-015

**BUILDING SIZE** 4,717 SF Retail/Restaurant

**YEAR BUILT** 2023/2024



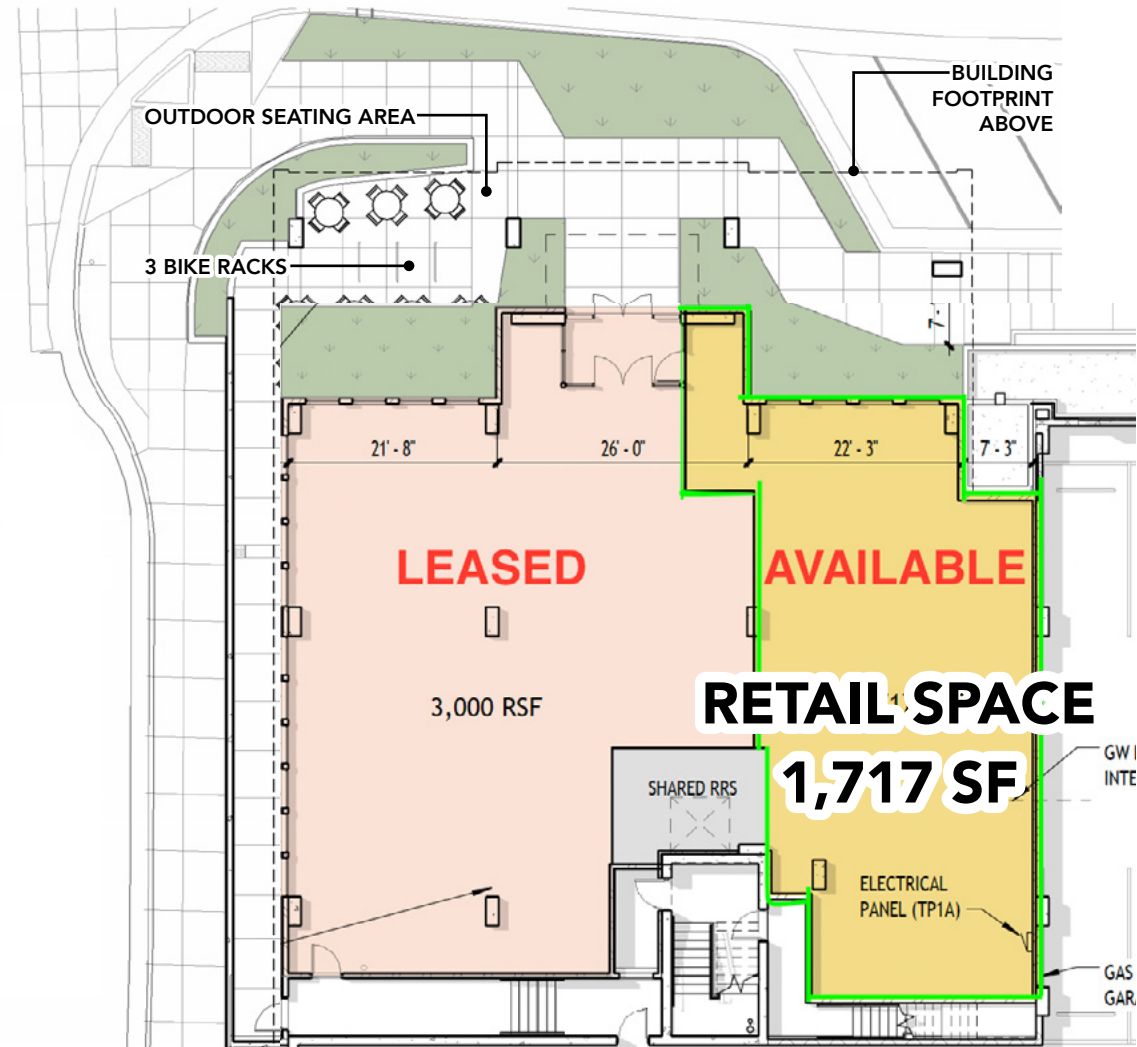
# RETAIL SPACE HIGHLIGHTS

## PROPOSED PLAN

Restaurant/Retail Space Available: 1,717 GSF

Outdoor Seating Area: +/- 515 SF

Bike Racks & Focal Landscaping



# THE **V**IEW

CASTLE ROCK • COLORADO



WATCH VIDEO

**navpoint**  
REAL ESTATE GROUP



**MATT KULBE** Principal  
[matt.kulbe@navpointre.com](mailto:matt.kulbe@navpointre.com)  
C: 720.635.4591  
O: 720.420.7530



**JORDAN BURGESS** Associate  
[jordan.burgess@navpointre.com](mailto:jordan.burgess@navpointre.com)  
C: 970.371.4428  
O: 720.420.7530