

437 PARK AVENUE SOUTH 1ST FLOOR - STORE FRONT

between East 29th Street and East 30th Street
New York, New York 10016

Exciting Opportunity to Lease Ground Floor Retail or Restaurant on Prime Park Avenue South!
Approximate Square Footage: 1,400 SF, ground floor 800 SF and basement 600 SF below street level.
The location is very high traffic and would be ideal for any operator. Last time space was available was 22 years ago. Email or call today for a Private Tour.

CONTACT:



MONIQUE MOSKOWITZ

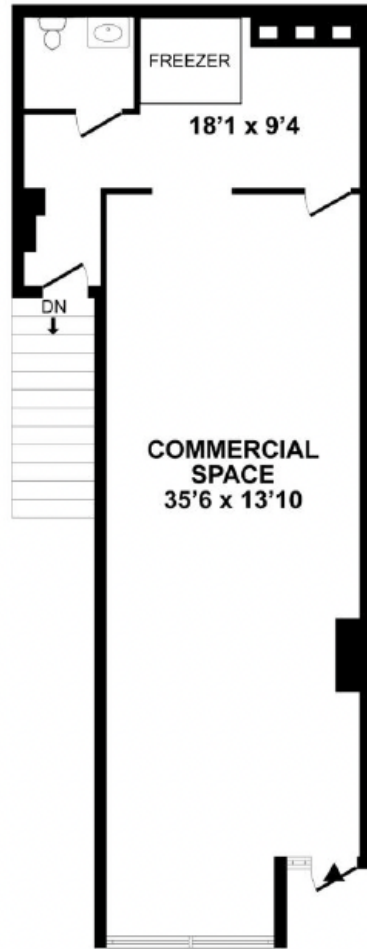
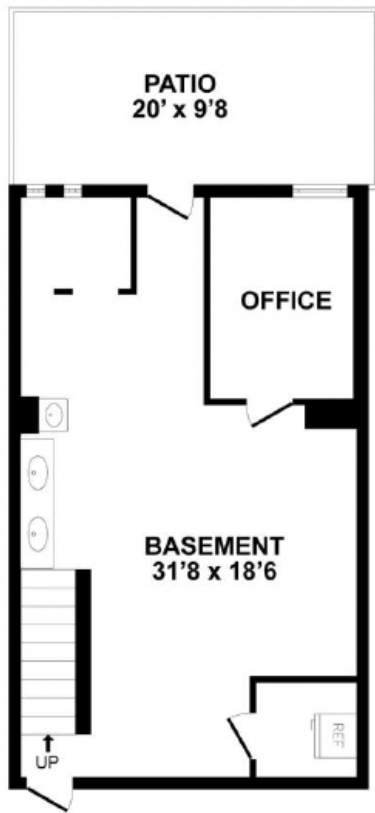
Cellular: 201.637.9869

monique@absolutebestcare.com





437 PARK AVENUE SOUTH COMMERCIAL SPACE



BASEMENT

FIRST FLOOR

437 PARK AVENUE SOUTH COMMERCIAL SPACE

FLOOR PLAN FOR IDENTIFICATION PURPOSES ONLY-NOT TO SCALE