



501

North Orange
Glendale, CA

Medical Office Space
For Lease

Matthew Heyn

Lic No. 01306148
+1 818 334 1860
matt.heyn@colliers.com

Caitlin Hoffman

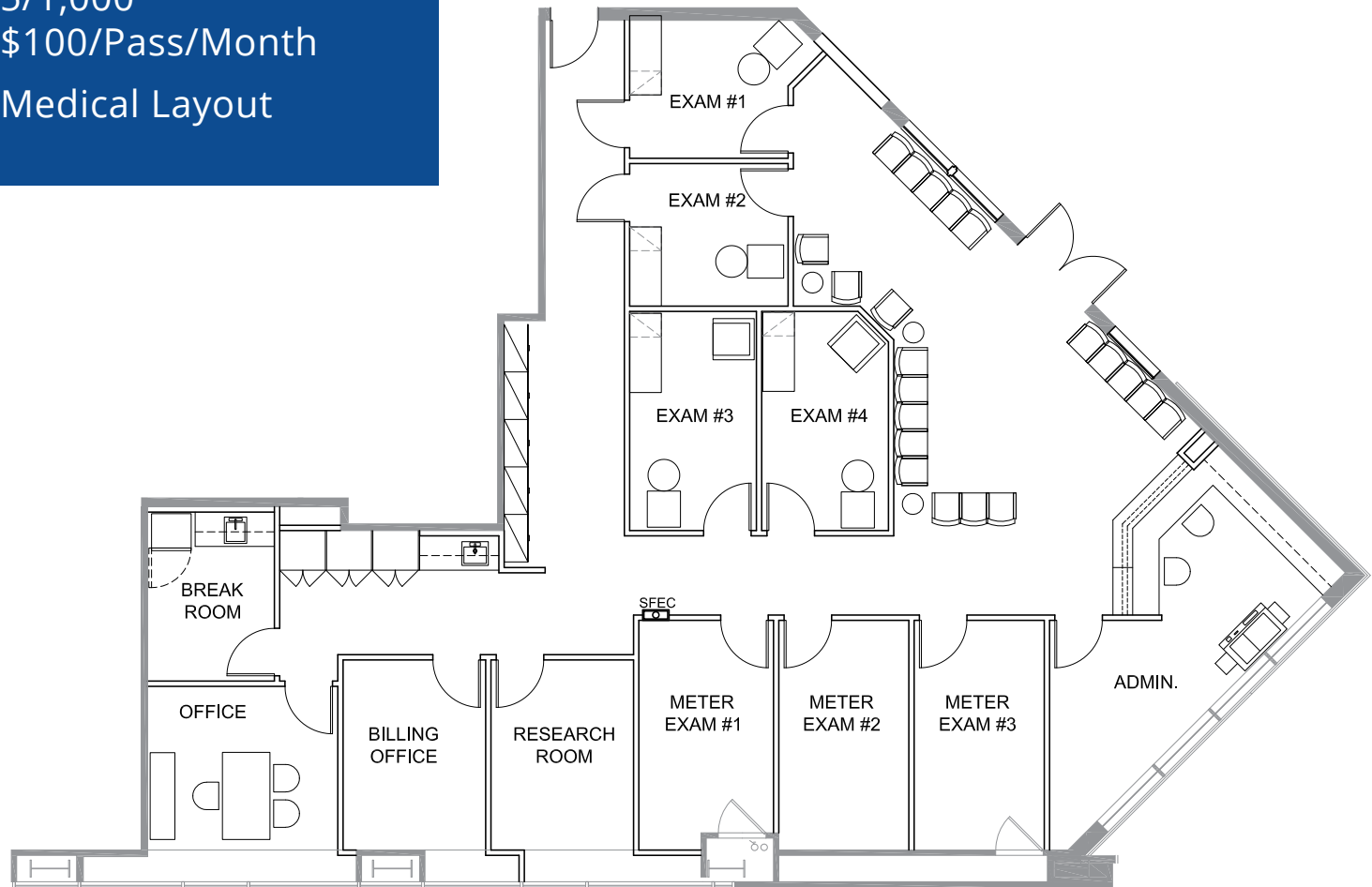
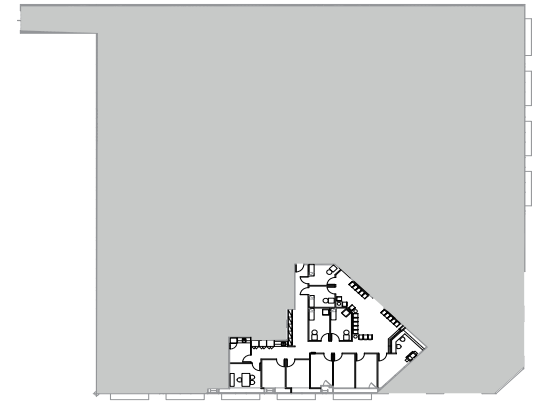
Lic. No. 01935762
+1 818 334 1850
caitlin.hoffman@colliers.com

Colliers



Suite 250

RSF	±3,391
AVAILABILITY	Available now
ASKING RATE	\$4.00 MG
PARKING	5/1,000 \$100/Pass/Month
NOTES	Medical Layout

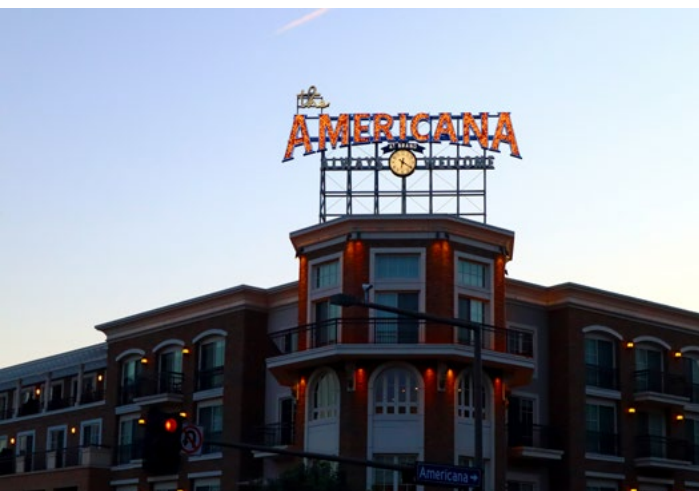






Highlights

- Suite 250 formerly occupied by an ophthalmologist
 - 5/1,000/RSF covered parking with direct elevator to the 2nd floor of the building
 - Excellent central Glendale location with a walkscore of 95
 - Proximity to executive and employee residential
 - Convenient access to the Ventura (134) , Interstate 5, and the Glendale (2) Freeways
-



501 North Orange St Glendale, CA

Contact Us:



Accelerating success.

Matthew Heyn

Lic No. 01306148
+1 818 334 1860
matt.heyn@colliers.com

Caitlin Hoffman

Lic. No. 01935762
+1 818 334 1850
caitlin.hoffman@colliers.com



This document has been prepared by Colliers International for advertising and general information only. Colliers International makes no guarantees, representations or warranties of any kind, expressed or implied, regarding the information including, but not limited to, warranties of content, accuracy and reliability. Any interested party should undertake their own inquiries as to the accuracy of the information. Colliers International excludes unequivocally all inferred or implied terms, conditions and warranties arising out of this document and excludes all liability for loss and damages arising therefrom. This publication is the copyrighted property of Colliers International and/or its licensor(s). ©2021. All rights reserved.