

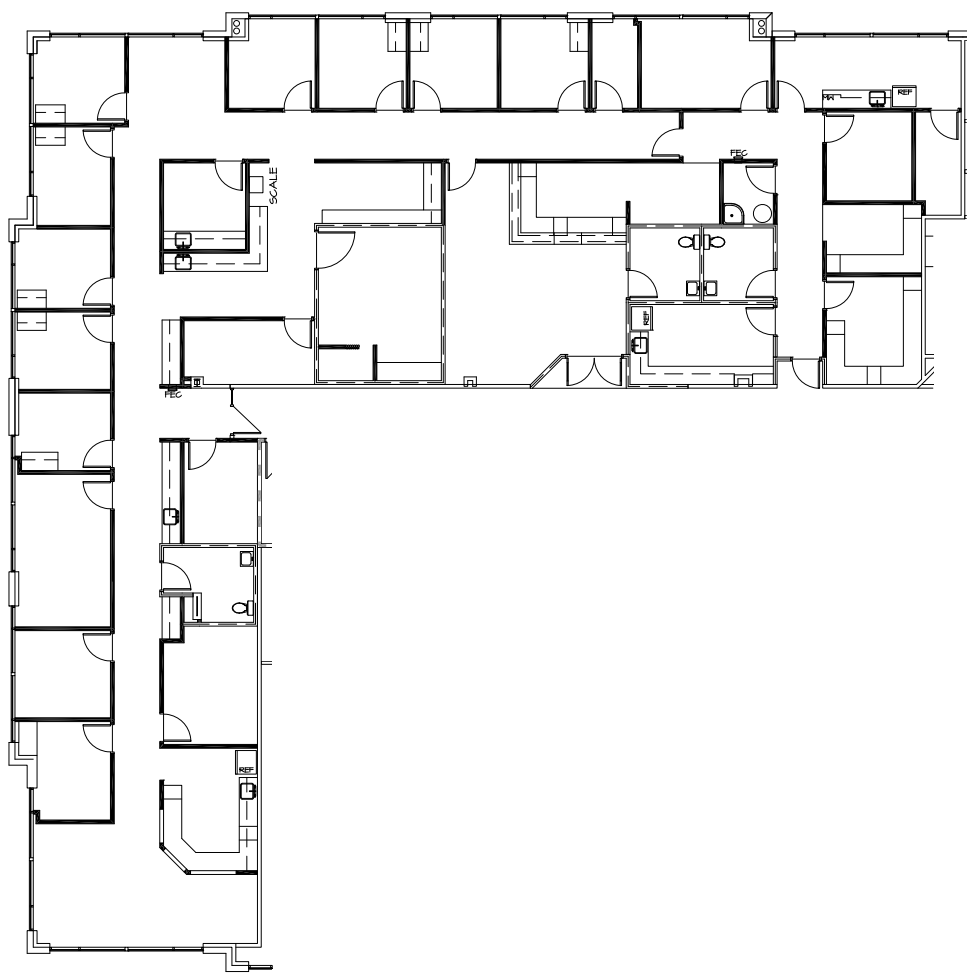
101 MEDICAL GATEWAY

9520 West Palm Lane, Phoenix

Suite 220 | ±2,925 RSF



TAKE THE VIRTUAL TOUR



TRANSWESTERN

REAL ESTATE
SERVICES

Leasing Information:

Kevin Smigiel

602.550.9295

kevin.smigiel@transwestern.com

Kathleen Morgan

602.809.1048

kathleen.morgan@transwestern.com

Vince Femiano

602.791.3310

vince.femiano@transwestern.com

Andrew Olivet

602.370.2685

andrew.olivet@transwestern.com

2501 E Camelback Rd, Ste 1

Phoenix, AZ 85016

transwestern.com

The information furnished has been obtained from sources we deem reliable and is submitted subject to errors, omissions and changes. Although Transwestern has no reason to doubt its accuracy, we do not guarantee it. All information should be verified by the recipient prior to lease, purchase, exchange, or execution of legal documents. © 2025 Transwestern

101 MEDICAL GATEWAY

9520 West Palm Lane, Phoenix

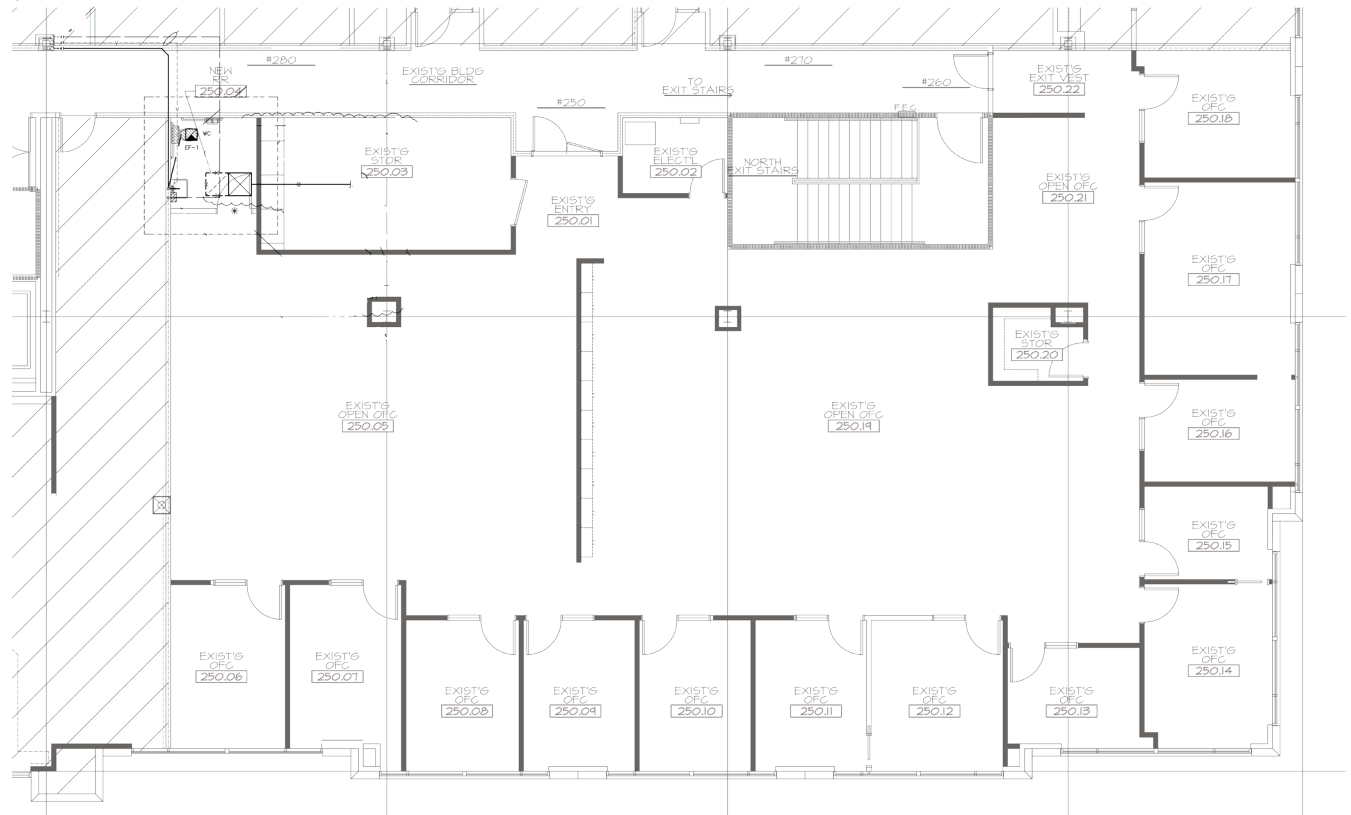
Suite 250 | ±6,290 RSF



TAKE THE VIRTUAL TOUR

TRANSWESTERN

REAL ESTATE
SERVICES



Leasing Information:

Kevin Smigiel

602.550.9295

kevin.smigiel@transwestern.com

Kathleen Morgan

602.809.1048

kathleen.morgan@transwestern.com

Vince Femiano

602.791.3310

vince.femiano@transwestern.com

Andrew Olivet

602.370.2685

andrew.olivet@transwestern.com

2501 E Camelback Rd, Ste 1

Phoenix, AZ 85016

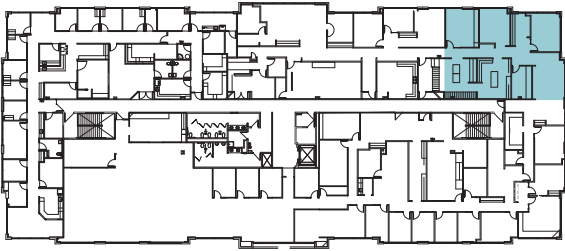
transwestern.com

The information furnished has been obtained from sources we deem reliable and is submitted subject to errors, omissions and changes. Although Transwestern has no reason to doubt its accuracy, we do not guarantee it. All information should be verified by the recipient prior to lease, purchase, exchange, or execution of legal documents. © 2025 Transwestern

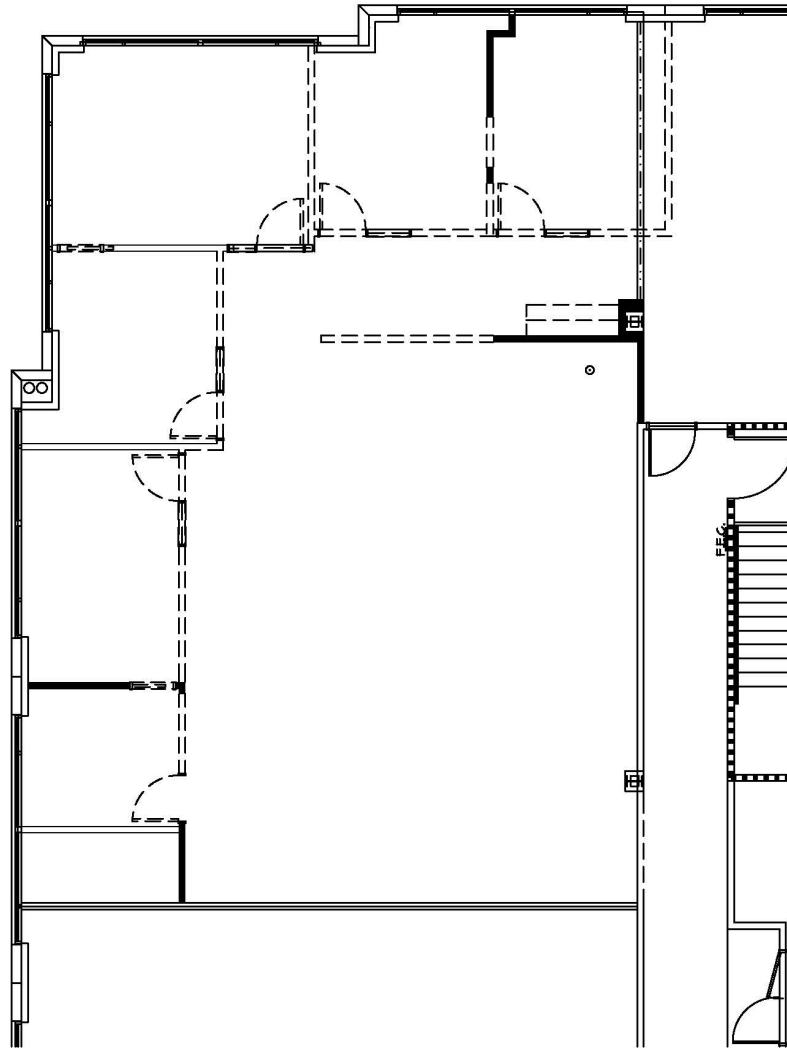
101 MEDICAL GATEWAY

9520 West Palm Lane, Phoenix

Suite 270 | ±2,613 RSF



TAKE THE VIRTUAL TOUR



TRANSWESTERN

REAL ESTATE
SERVICES

Leasing Information:

Kevin Smigiel

602.550.9295

kevin.smigiel@transwestern.com

Kathleen Morgan

602.809.1048

kathleen.morgan@transwestern.com

Vince Femiano

602.791.3310

vince.femiano@transwestern.com

Andrew Olivet

602.370.2685

andrew.olivet@transwestern.com

2501 E Camelback Rd, Ste 1

Phoenix, AZ 85016

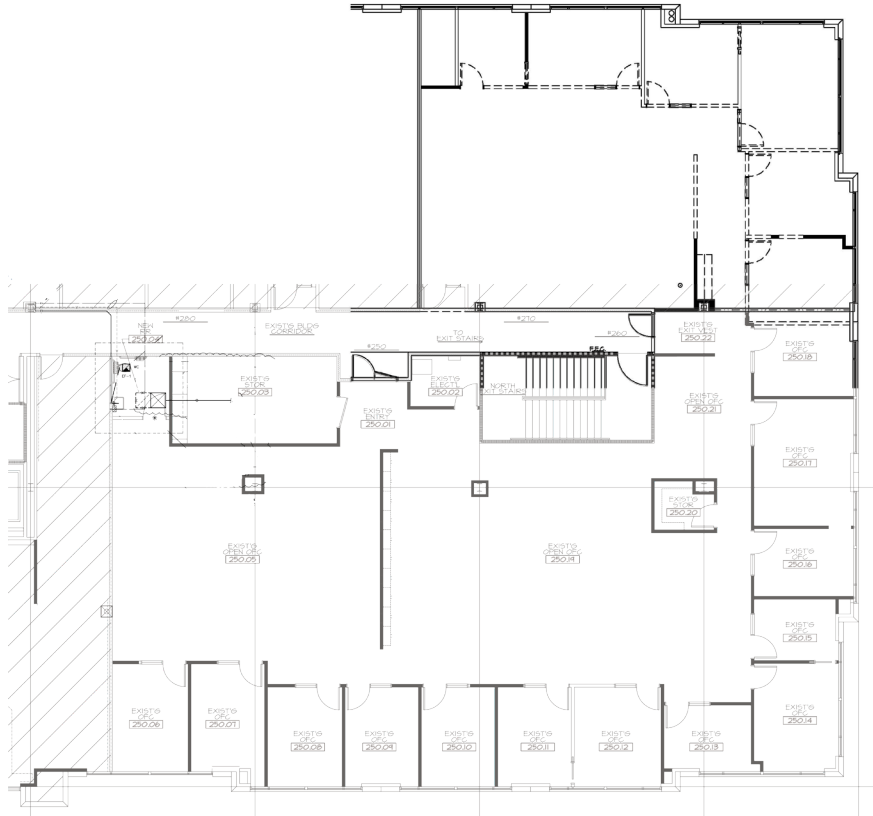
transwestern.com

The information furnished has been obtained from sources we deem reliable and is submitted subject to errors, omissions and changes. Although Transwestern has no reason to doubt its accuracy, we do not guarantee it. All information should be verified by the recipient prior to lease, purchase, exchange, or execution of legal documents. © 2025 Transwestern

101 MEDICAL GATEWAY

9520 West Palm Lane, Phoenix

Suite 250/270 | ±8,903 RSF



TRANSWESTERN
REAL ESTATE
SERVICES

Leasing Information:

Kevin Smigiel

602.550.9295

kevin.smigiel@transwestern.com

Kathleen Morgan

602.809.1048

kathleen.morgan@transwestern.com

Vince Femiano

602.791.3310

vince.femiano@transwestern.com

Andrew Olivet

602.370.2685

andrew.olivet@transwestern.com

2501 E Camelback Rd, Ste 1

Phoenix, AZ 85016

transwestern.com

The information furnished has been obtained from sources we deem reliable and is submitted subject to errors, omissions and changes. Although Transwestern has no reason to doubt its accuracy, we do not guarantee it. All information should be verified by the recipient prior to lease, purchase, exchange, or execution of legal documents. © 2025 Transwestern