

5353 WAYZATA OFFICE CENTER 5353 WAYZATA BOULEVARD, ST. LOUIS PARK, MN 55416



PROPERTY DESCRIPTION

- Southwest quadrant of Highways 100/I-394 and adjacent to The Shops at West End
- Sheltered Bus Stop On-Site
- Park N' Ride
- Convenient lodging for your out of town clients and consultants; Hilton Homewood Suites next door
- Associated Bank is anchor tenant

AREA AMENITIES include over twelve restaurants within walking distance including CRAVE; The Loop; Raku Sushi & Lounge; Rojo Mexican Grill; Yard house; Punch Bowl Social; and more
Five Hotels: SpringHill Suites, DoubleTree; TownHill Suites, AC Hotel by Marriott and Hilton Homewood
Cub Foods/Liquor adjacent to property
Showplace Icon Theatres
Anthropologie; Costco; Evereve; J.W. Hulme; francesca's and more...

PROPERTY HIGHLIGHTS

- Suite 250 - 2,150 SF
- Suite 306 - 2,237 SF
- Suite 400 - 5,241 SF

OFFERING SUMMARY

Lease Rate:	\$16.00 SF/yr (NNN)
Available SF:	2,150 - 5,241 SF
Building Size:	112,304 SF
2019 Tax & OPS:	\$13.21 SF

BARRY BIRNBERG

952.820.1673

barry.birnberg@northcocommercial.com

The information above has been obtained from services we believe to be reliable, however, we accept no responsibility for its correctness.

5353 WAYZATA OFFICE CENTER
5353 WAYZATA BOULEVARD, ST. LOUIS PARK, MN 55416



BARRY BIRNBERG

952.820.1673

barry.birnberg@northcocommercial.com

The information above has been obtained from services we believe to be reliable, however, we accept no responsibility for its correctness.

5353 WAYZATA OFFICE CENTER 5353 WAYZATA BOULEVARD, ST. LOUIS PARK, MN 55416



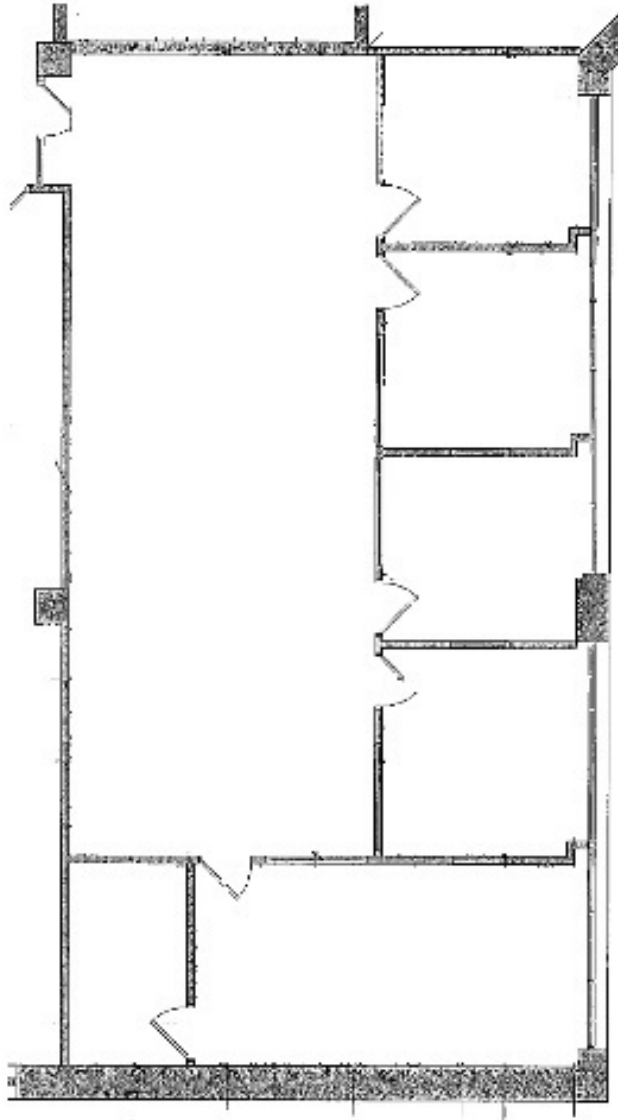
BARRY BIRNBERG

952.820.1673

barry.birnberg@northcocommercial.com

The information above has been obtained from services we believe to be reliable, however, we accept no responsibility for its correctness.

5353 WAYZATA OFFICE CENTER
5353 WAYZATA BOULEVARD, ST. LOUIS PARK, MN 55416



Suite 250
2,150 SF



(NOT TO SCALE)

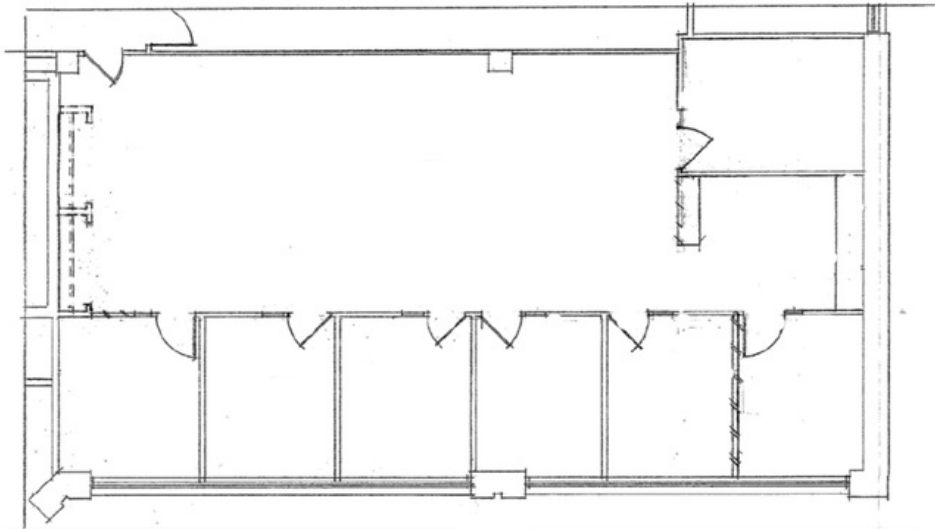
BARRY BIRNBERG

952.820.1673

barry.birnberg@northcocommercial.com

The information above has been obtained from services we believe to be reliable, however, we accept no responsibility for its correctness.

5353 WAYZATA OFFICE CENTER
5353 WAYZATA BOULEVARD, ST. LOUIS PARK, MN 55416



SUITE #306
2,237 R.S.F.



KEY PLAN
LEVEL THREE

BARRY BIRNBERG

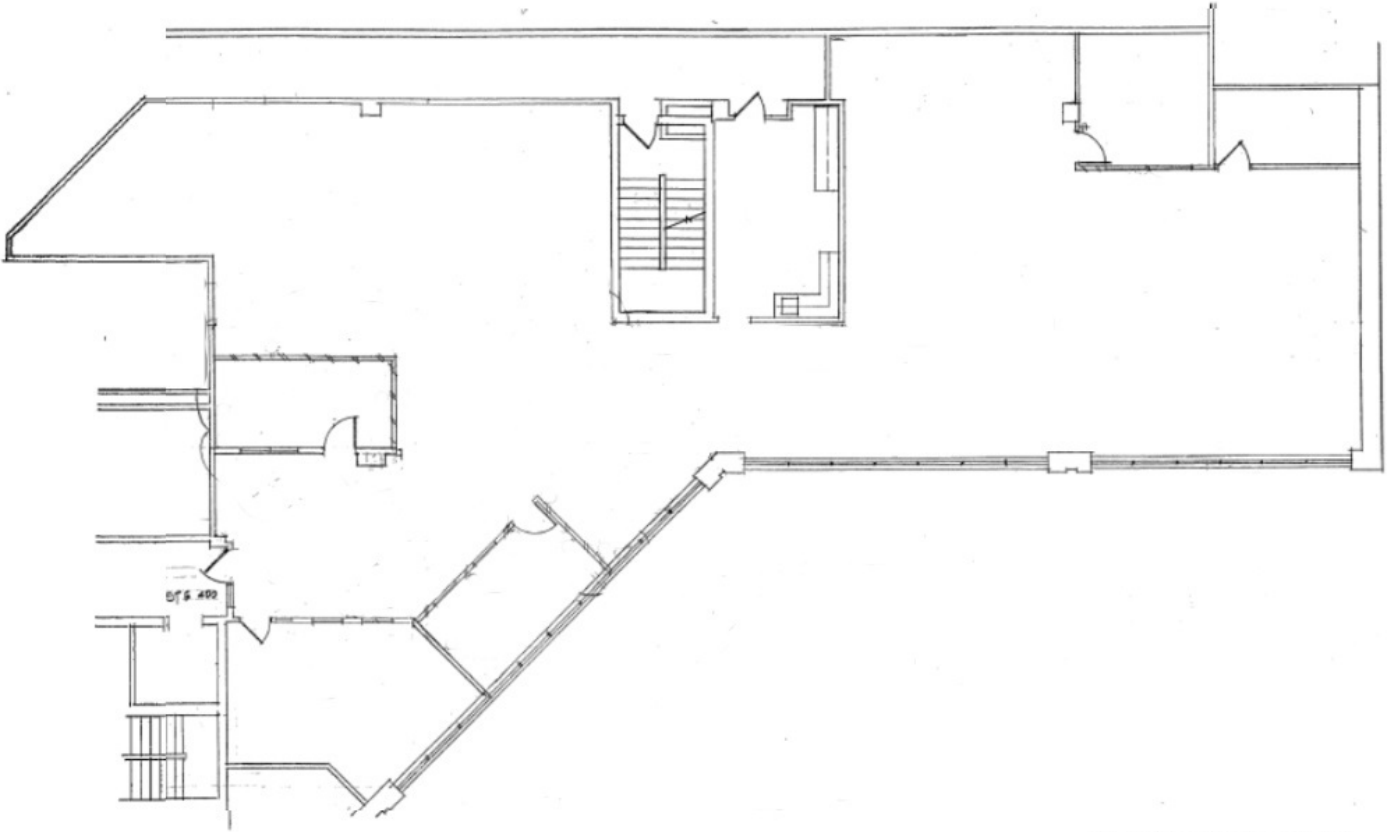
952.820.1673

barry.birnberg@northcocommercial.com

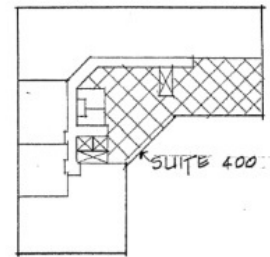
SUITE 306 - 2.237 SF

The information above has been obtained from services we believe to be reliable, however, we accept no responsibility for its correctness.

5353 WAYZATA OFFICE CENTER
5353 WAYZATA BOULEVARD, ST. LOUIS PARK, MN 55416



Suite 400
5,241 SF



(NOT TO SCALE)

BARRY BIRNBERG

952.820.1673

barry.birnberg@northcocommercial.com

SUITE 400 - 5,241 SF

The information above has been obtained from services we believe to be reliable, however, we accept no responsibility for its correctness.